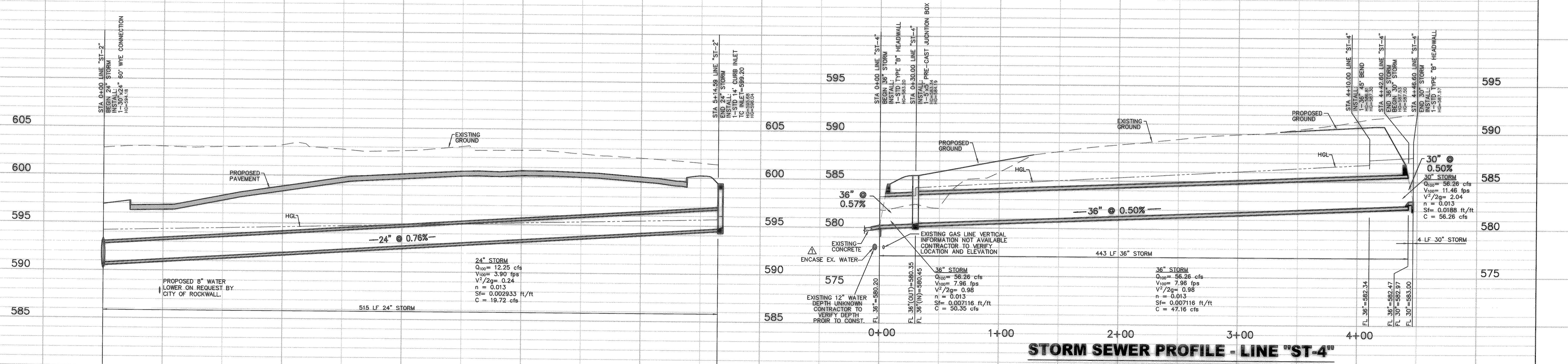
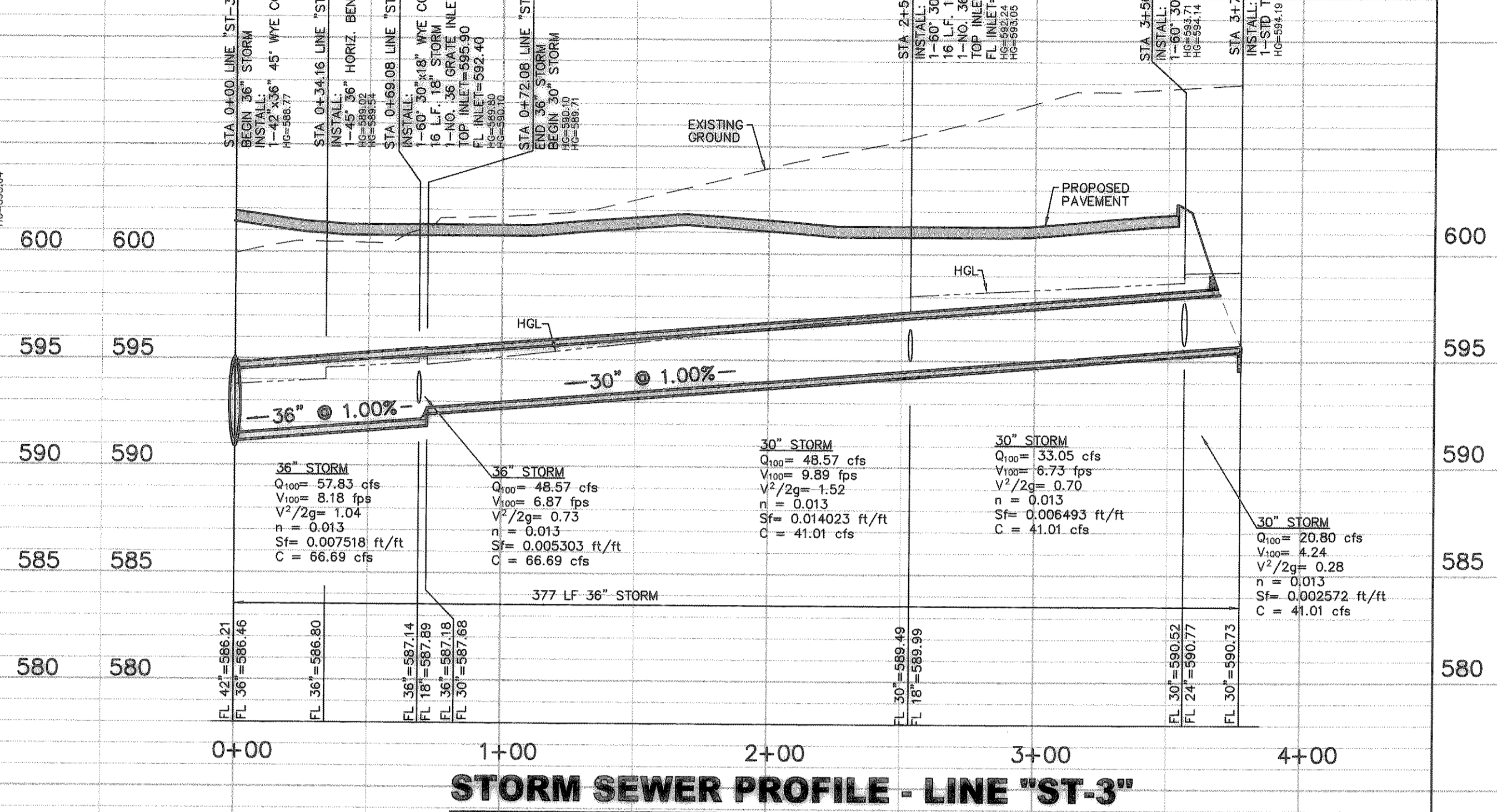


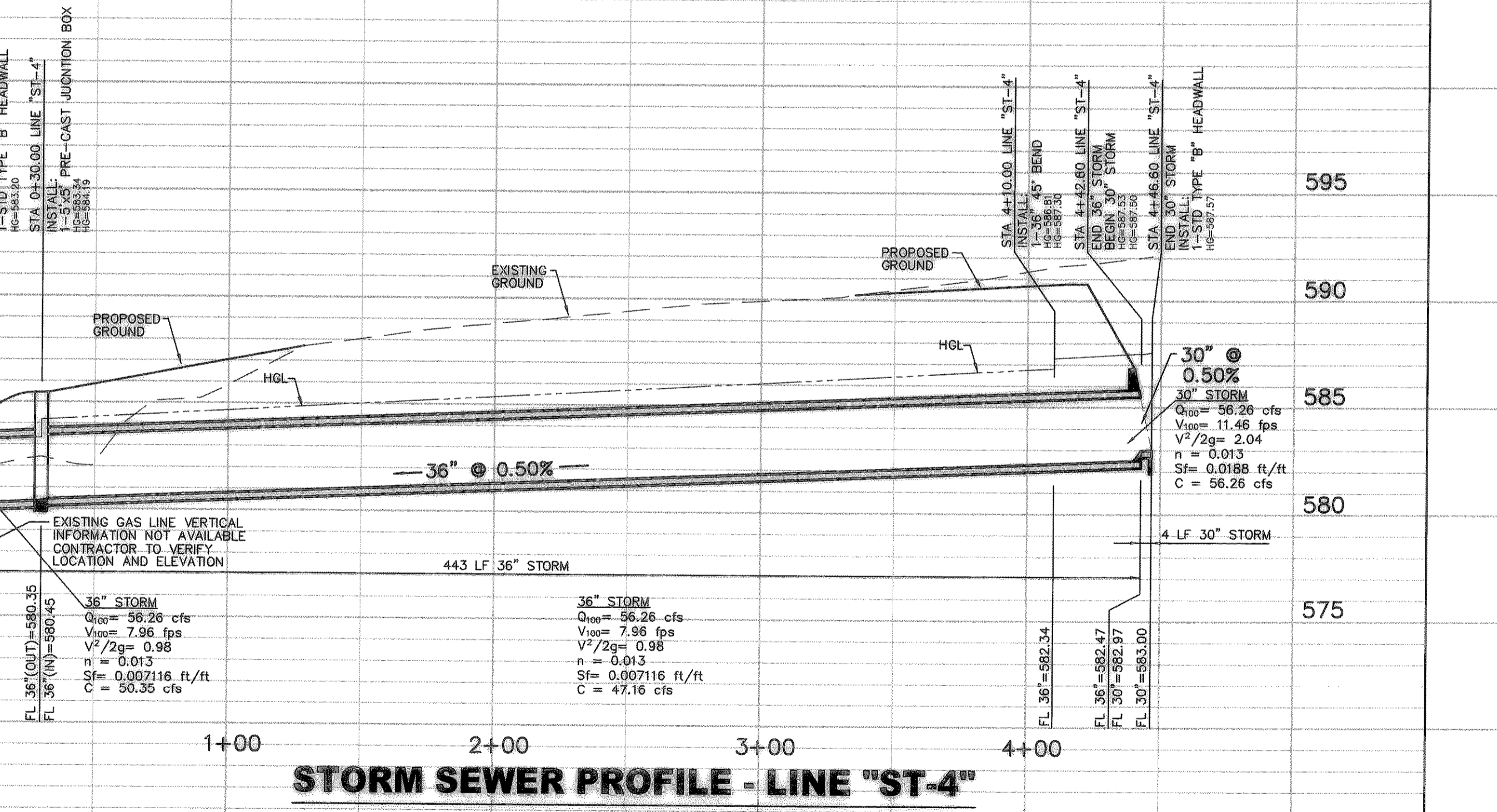
**STORM SEWER PROFILE - LINE "ST-1"**



**STORM SEWER PROFILE - LINE "ST-2"**



**STORM SEWER PROFILE - LINE "ST-3"**



**STORM SEWER PROFILE - LINE "ST-4"**

BENCHMARKS

BM 1	"I" CUT SET IN CENTER OF A 12' HEADWALL ±2230' WEST OF E.F.M.549 AND ±70' NORTH OF E.S.H. 276	ELEV.=581.84
BM 2	"I" CUT SET FOUND IN CENTER OF 4' HEADWALL @ NORTHEAST CORNER OF F.M.549 & S.H.276	ELEV.=592.75
BM 3	"I" CUT SET P.O.C. OF B.C. ON THE SOUTH END OF MEDIAN ON INNOVATION DR. AT THE INTERSECTION OF STATE HIGHWAY NO. 276.	ELEV.=599.49
BM 4	"I" CUT SET IN CENTER OF INLET ON THE EAST RIGHT OF WAY OF INNOVATION DR. ±80' SOUTH OF CENTERLINE OF DISCOVERY BLVD.	ELEV.=584.18
BM 5	"I" CUT SET ON THE EAST RIGHT OF WAY OF RESEARCH CRT. AT THE P.C. OF B.C. ON THE NORTH SIDE OF ENTRANCE.	ELEV.=599.84

**RECORD DRAWING**

THIS DRAWING HAS BEEN REVISED TO REFLECT CONSTRUCTION RECORDS MAINTAINED AND PROVIDED BY THE CONTRACTOR FOR THIS PROJECT.

CONTRACTOR: PRECEPT BUILDERS

DATE REVISED: 10/31/2003

THE SEAL APPEARING ON THIS DOCUMENT WAS AUTHORIZED BY STEVEN A. MARKUSSEN, P.E. 70090 ON 12/20/02. ALTERATION OF A SEALED DOCUMENT WITHOUT PROPER NOTIFICATION TO THE ENGINEER IS AN OFFENSE UNDER THE TEXAS ENGINEERING PRACTICE ACT.

STEVEN A. MARKUSSEN  
70090  
REGISTERED PROFESSIONAL ENGINEER  
12/20/02

10/31/2003	RECORD DRAWING	
1/09/2003	ADDED WATER ENCASUREMENT FOR "ST-4" AND CHANGED ALIGNMENT FOR "ST-4"	
NO.	DATE	REVISION

**Pacheco Koch Consulting Engineers**  
8350 N CENTRAL EXPWY SUITE 1000 DALLAS, TEXAS 75206 972.235.3031

**STORM SEWER PROFILES**  
**E-Z FLO WAREHOUSES**  
**ROCKWALL TECHNOLOGY PARK**  
**J.M. ALLEN SURVEY, ABSTRACT NO. 2**  
**CITY OF ROCKWALL, TEXAS**

DESIGN	DRAWN	DATE	SCALE	NOTES	FILE	NO.
CJE	RRL	NOV 2002	1"=40'			<b>C3.3</b>

P:\2003\11-52AM\11/03/2003\2005-02-183.DWG; 2058-02-183.CVD; DWG  
 M:\DWG-20\2058-02-183.DWG; 2058-02-183.CVD; DWG