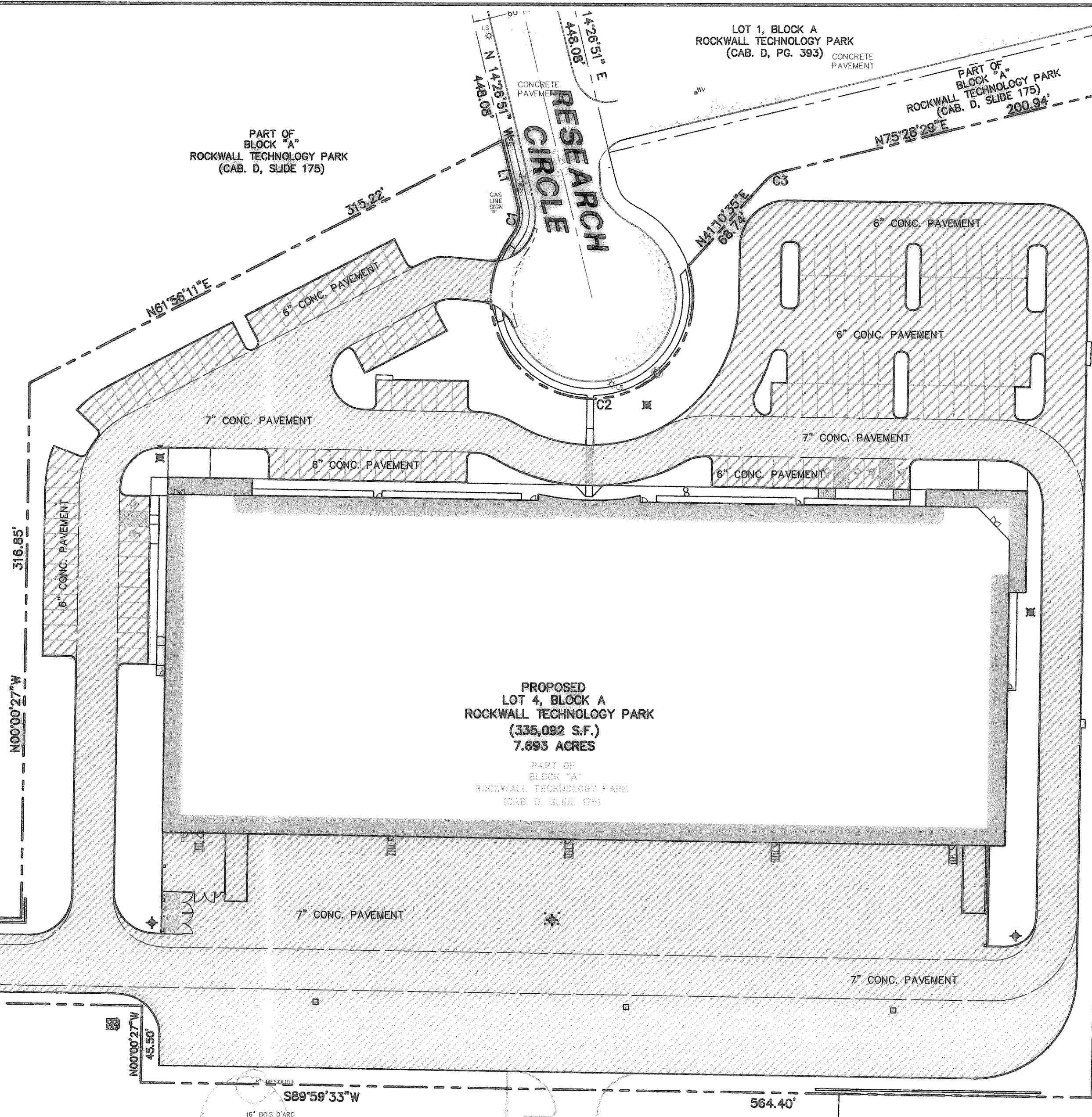
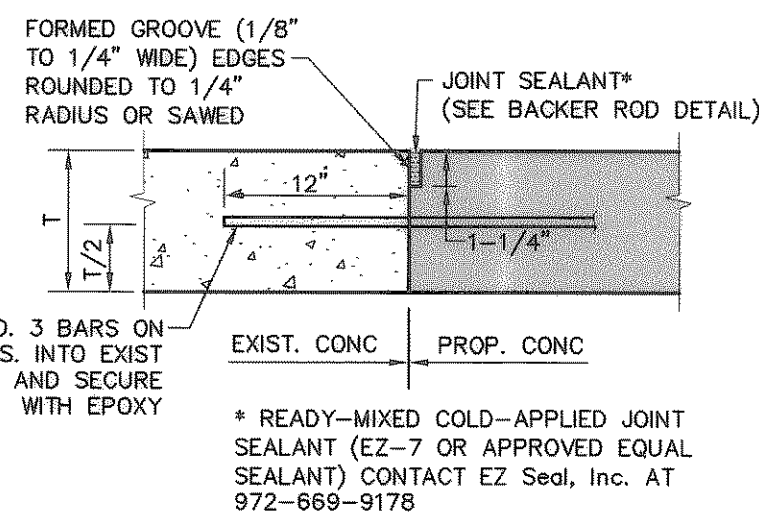


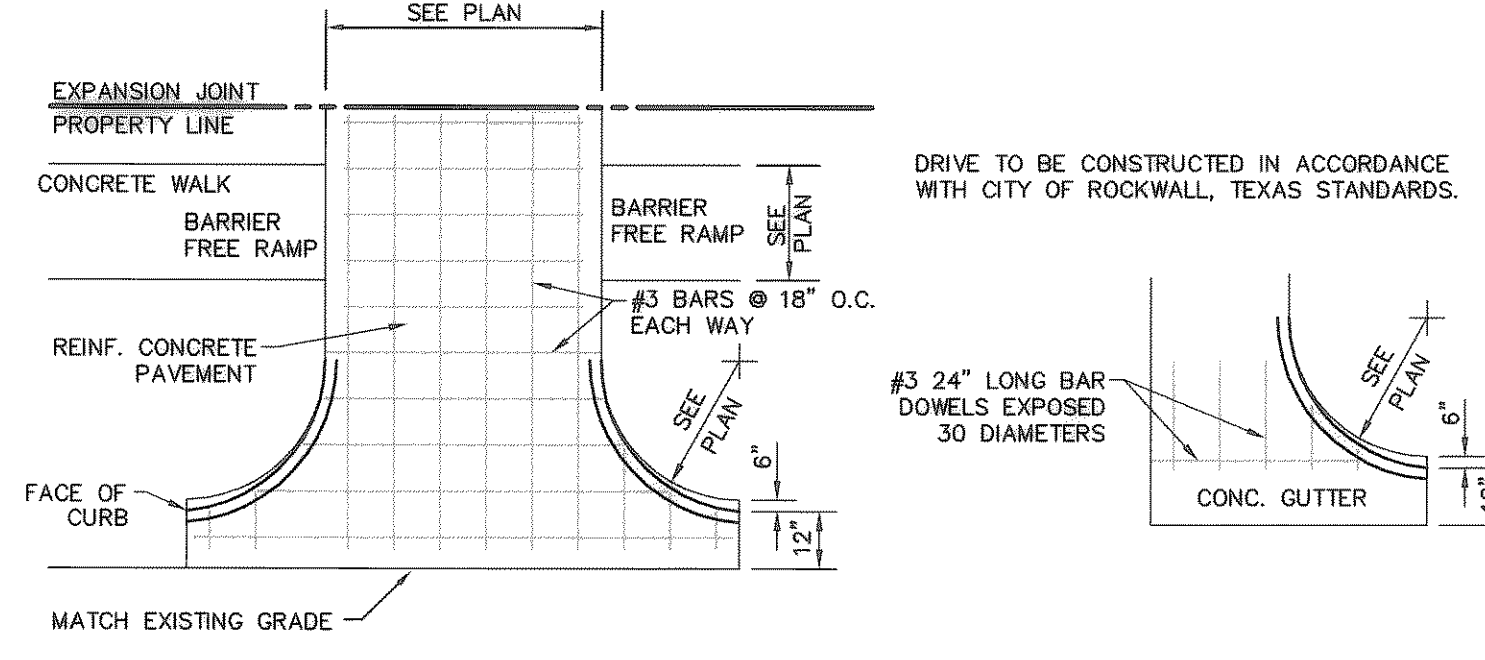
**1 HANDICAP PARKING & ACCESS RAMP**  
NOT TO SCALE



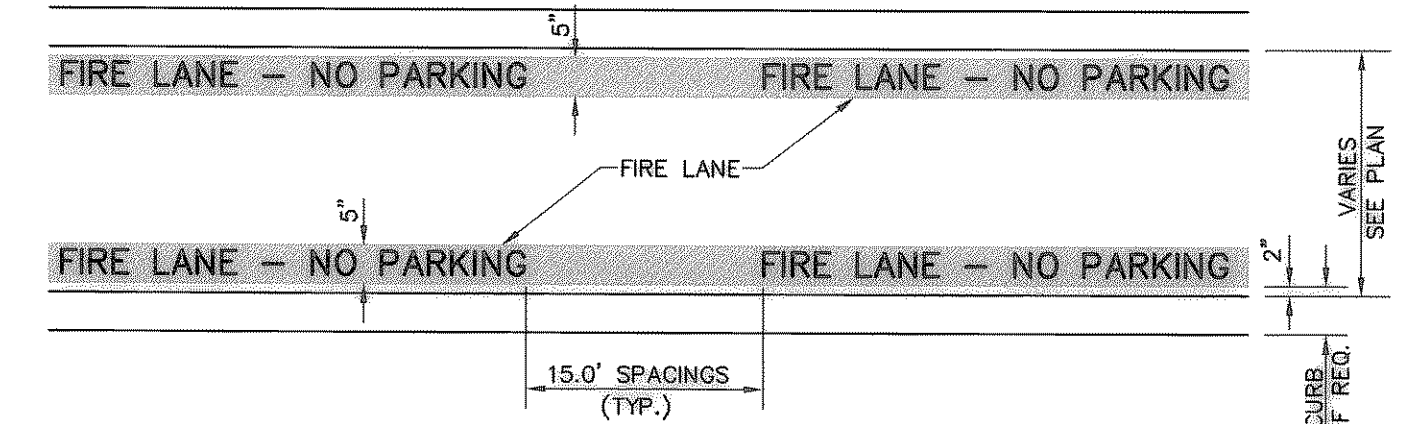
PROPOSED LOT 4, BLOCK A  
ROCKWALL TECHNOLOGY PARK  
(335,082 S.F.)  
7.693 ACRES  
PART OF BLOCK "A"  
ROCKWALL TECHNOLOGY PARK  
(CAB. D, SLIDE 175)



**3 PAVEMENT CONNECTION**  
NOT TO SCALE

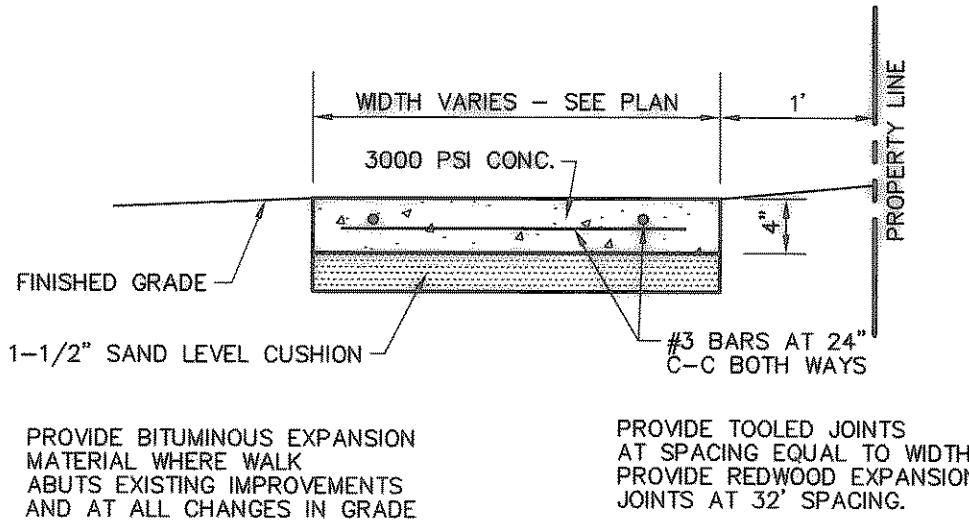


**5 DRIVEWAY APPROACH**  
NOT TO SCALE

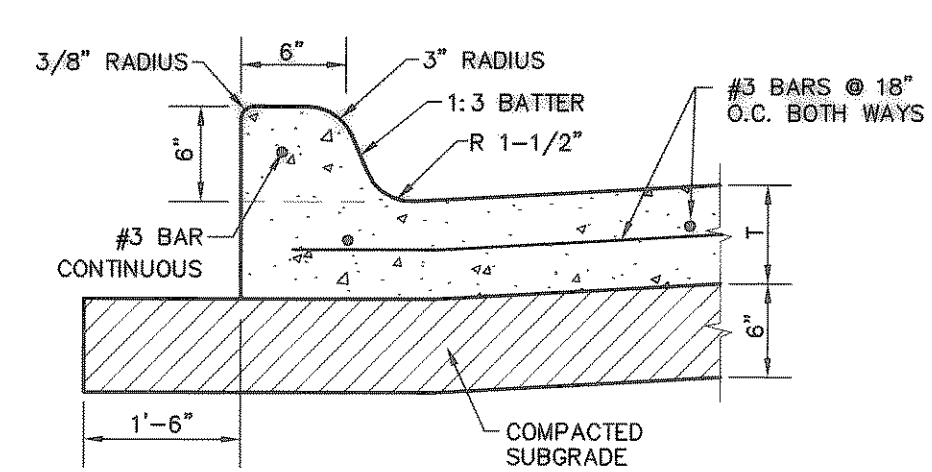


**GENERAL NOTE:**  
A. STRIPING TO BE DONE IN ACCORDANCE WITH CITY STANDARDS.  
**STRIPING DETAIL NOTE:**  
A. PAINT:  
1. STRIPES SHALL BE FIVE (5) INCHES WIDE PAINTED WITH AN EXTERIOR ACRYLIC LATEX PAINT.  
2. LETTERS SHALL BE FOUR (4) INCHES HIGH PAINTED WITH AN EXTERIOR ACRYLIC LATEX PAINT.  
B. COLOR SHALL BE "TRAFFIC WHITE" GLIDDEN NO. 563245 OR EQUAL.  
B. APPLICATION:  
1. STRIPES MAY BE BRUSHED OR SPRAYED, ONE COAT TO FINISH.  
2. LETTERS SHALL BE STENCIL FORMED, BRUSH APPLIED AND SPACED AS DETAILED ON THIS SHEET.

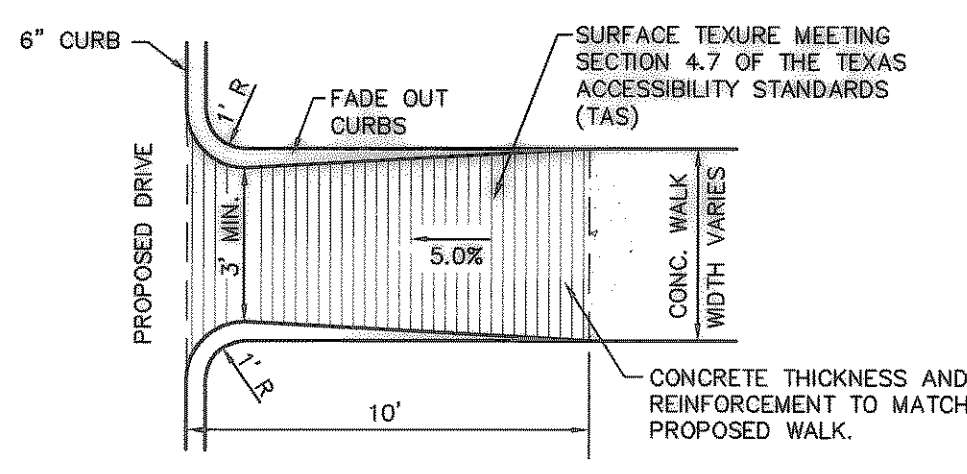
**2 FIRE LANE STRIPING**  
NOT TO SCALE



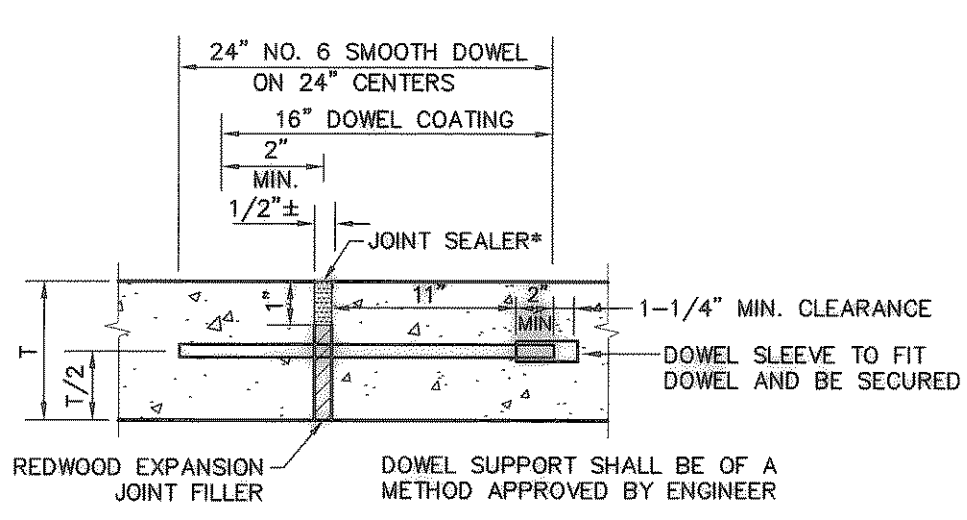
**4 CONCRETE WALK**  
NOT TO SCALE



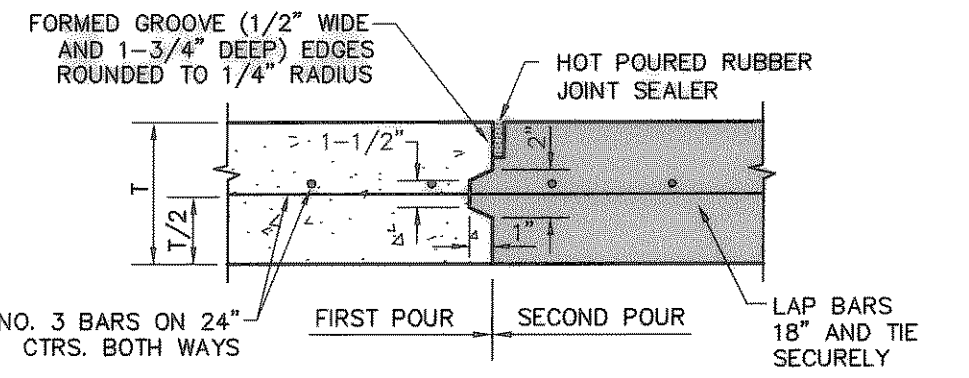
**6 INTEGRAL CURB**  
NOT TO SCALE



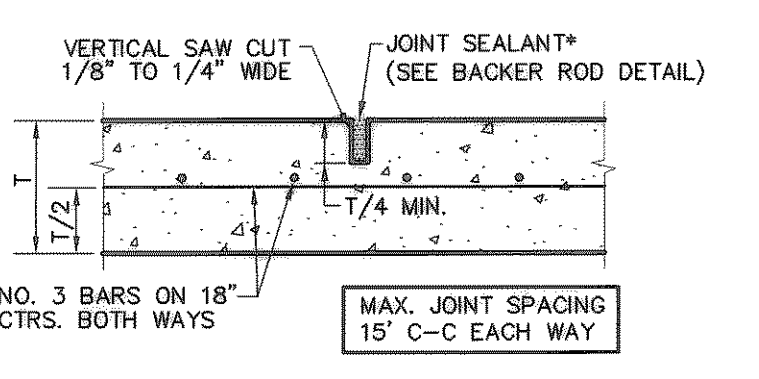
**13 ACCESS RAMP**  
NOT TO SCALE



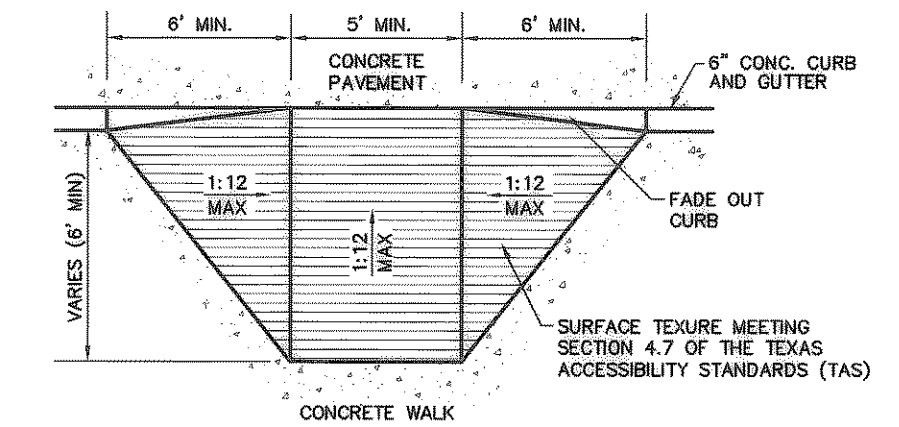
**9 EXPANSION JOINT**  
NOT TO SCALE



**11 CONSTRUCTION JOINT**  
NOT TO SCALE



**12 SAWED DUMMY JOINT**  
NOT TO SCALE



**10 ACCESS RAMP**  
NOT TO SCALE

NOTES:  
1. ALL HANDICAPPED SIGNAGE AND MARKINGS TO BE IN ACCORDANCE WITH FEDERAL, STATE AND LOCAL REGULATIONS.  
2. MAXIMUM SLOPE FOR HANDICAPPED ACCESSIBLE PATHS ARE 5% WITH A MAXIMUM CROSS FALL SLOPE OF 2% THE FIRST FIVE FEET FROM THE DOOR IS NOT TO EXCEED 2% IN ANY DIRECTION.

AT DRIVEWAY APPROACH (SEE DETAILS) OR AS NOTED ON PLAN AS "E.J."  
\* READY-MIXED COLD-APPLIED JOINT SEALANT (EZ-7 OR APPROVED EQUAL SEALANT) CONTACT EZ Seal, Inc. AT 972-669-9178

SCARIFY AND COMPACT SUBGRADE BETWEEN 95% AND 105% MAX. DRY DENSITY (STD. PROCTOR) AT A MOISTURE CONTENT BETWEEN -1% AND +3% ABOVE OPTIMUM.  
NOTE: REFER TO GEOTECH REPORT FOR FURTHER INFORMATION.

**7 CONCRETE PAVEMENT SECTION**  
NOT TO SCALE

CLASS A, 3000 PSI CONCRETE PARKING AREAS AT 28 DAYS (NO FLY ASH ALLOWED)  
CLASS C, 3600 PSI CONCRETE FIRE LANE AND DUMPSTER AREAS AT 28 DAYS (NO FLY ASH ALLOWED)  
6 SACK MIX (MACHINE)  
6 1/2 SACK MIX (HAND POUR)

**PAVING NOTES**

- ALL DIMENSIONS ARE FROM BACK OF CURB UNLESS OTHERWISE NOTED.
- UNLESS OTHERWISE NOTED, ALL CONCRETE SHALL BE CLASS "A", (3000 PSI).
- UNLESS NOTED, ALL FILL PLACED UNDER PAVING SHALL BE COMPACTED TO 95% STANDARD PROCTOR DENSITY IN 6 INCH LIFTS. REFER TO STRUCTURAL SPECIFICATION FOR FILL PLACED BENEATH BUILDING AREAS. ALL OTHER FILL AREAS TO BE COMPACTED TO 90% STANDARD PROCTOR.
- THE CONTRACTOR SHALL SUBMIT A JOINT SPACING PLAN TO THE ENGINEER FOR APPROVAL. UNLESS NOTED, EXPANSION JOINT SPACING SHALL BE 90' MAXIMUM EACH WAY WITH NO KEYWAYS AND SAWED DUMMY JOINTS SHALL BE 15' EACH WAY.
- TRANSVERSE CONSTRUCTION JOINTS SHALL BE USED AT THE END OF EACH DAY'S PAVING AND WHERE INTERRUPTIONS SUSPEND OPERATIONS FOR 30 MINUTES OR MORE.
- ALL PAVEMENTS TO BE REMOVED SHALL BE SAWCUT TO A NEAT LINE, MINIMUM 1-1/2" DEEP, AND THE PAVEMENT REMOVED IN SUCH A MANNER AS TO PRESERVE THE EXISTING TRANSVERSE REINFORCING STEEL TO THE MAXIMUM EXTENT POSSIBLE.
- ALL CURB AND GUTTER SHALL BE INTEGRAL WITH THE PAVEMENT AND HAVE THE SAME COMPRESSIVE STRENGTH.
- PAVEMENT REINFORCEMENT SHALL BE #3 BARS, SPACED AT 24" CENTER TO CENTER EACH WAY EXCEPT WHERE NOTED IN THE PLANS.
- BAR LAPS SHALL BE 30 DIAMETERS IN LENGTH.
- ALL STRIPES SHALL BE 4" WIDE, UNLESS OTHERWISE NOTED.
- INSTALLATION AND PLACEMENT OF IRRIGATION SLEEVES AND UTILITY CONDUITS SHALL BE IN ACCORDANCE WITH LANDSCAPE ARCHITECTS AND MEP PLANS.
- SIDEWALKS AND ACCESSIBLE ROUTES SHALL HAVE A SLOPE NO GREATER THAN 5% AND A CROSS FALL NO GREATER THAN 2% UNLESS NOTED OTHERWISE.
- ALL FILL TO BE COMPACTED WITH A SHEEPS-FOOT ROLLER.
- IN AREAS WHERE THE DEDICATED FIRELANE DOES NOT EXTEND FROM FACE OF CURB TO FACE OF CURB, THE FIRE LANE STRIPING SHALL EXTEND ACROSS THE FULL DRIVE AISLE.

**RECORD DRAWING**  
THIS DRAWING HAS BEEN REVISED TO REFLECT CONSTRUCTION RECORDS MAINTAINED AND PROVIDED BY THE CONTRACTOR FOR THIS PROJECT.  
CONTRACTOR: PRECEPT BUILDERS  
DATE REVISED: 10/31/2003

10/31/2003 RECORD DRAWING

NO.	DATE	REVISION

**Pacheco Koch Consulting Engineers**  
8350 N CENTRAL EXPWY SUITE 1000 DALLAS, TEXAS 75206 972.235.3031

**PAVING PLAN AND DETAILS**  
**E-Z FLO WAREHOUSES**  
**ROCKWALL TECHNOLOGY PARK**  
**J.M. ALLEN SURVEY, ABSTRACT NO. 2**  
**CITY OF ROCKWALL, TEXAS**

DESIGN	DRAWN	DATE	SCALE	NOTES	FILE	NO.
CJE	RRL	DEC 2002	1"=50'			<b>C5.1</b>



THE SEAL APPEARING ON THIS DOCUMENT WAS AUTHORIZED BY STEVEN A. MARKUSSEN, P.E. 70090 ON 12/20/02. ALTERATION OF A SEALED DOCUMENT WITHOUT PROPER NOTIFICATION TO THE RESPONSIBLE ENGINEER IS AN OFFENSE UNDER THE TEXAS ENGINEERING PRACTICE ACT.