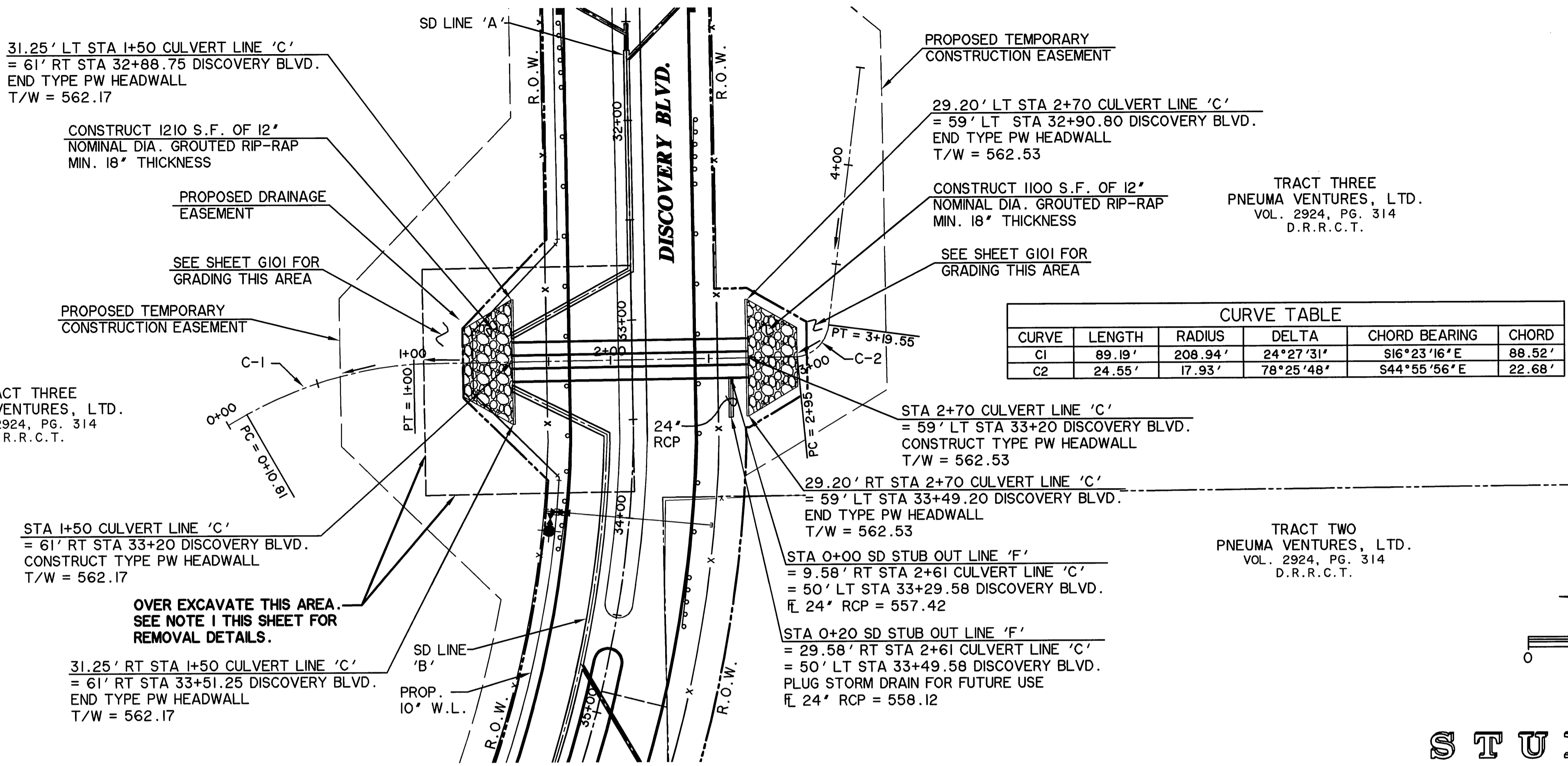


TIME 16 06 FILE: D303-SD-LN-C- CULVERT_98041.10 REVISED I-II.dwg

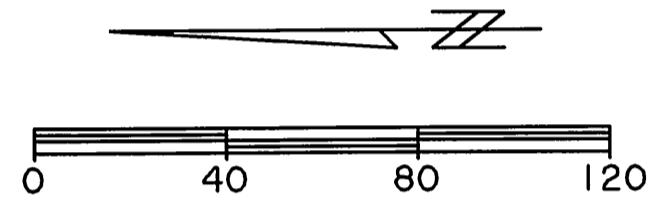


TRACT THREE
PNEUMA VENTURES, LTD.
VOL. 2924, PG. 314
D.R.R.C.T.

TRACT THREE
PNEUMA VENTURES, LTD.
VOL. 2924, PG. 314
D.R.R.C.T.

TRACT TWO
PNEUMA VENTURES, LTD.
VOL. 2924, PG. 314
D.R.R.C.T.

CURVE	LENGTH	RADIUS	DELTA	CHORD BEARING	CHORD
C1	89.19'	208.94'	24°27'31"	S16°23'16"E	88.52'
C2	24.55'	17.93'	78°25'48"	S44°55'56"E	22.68'

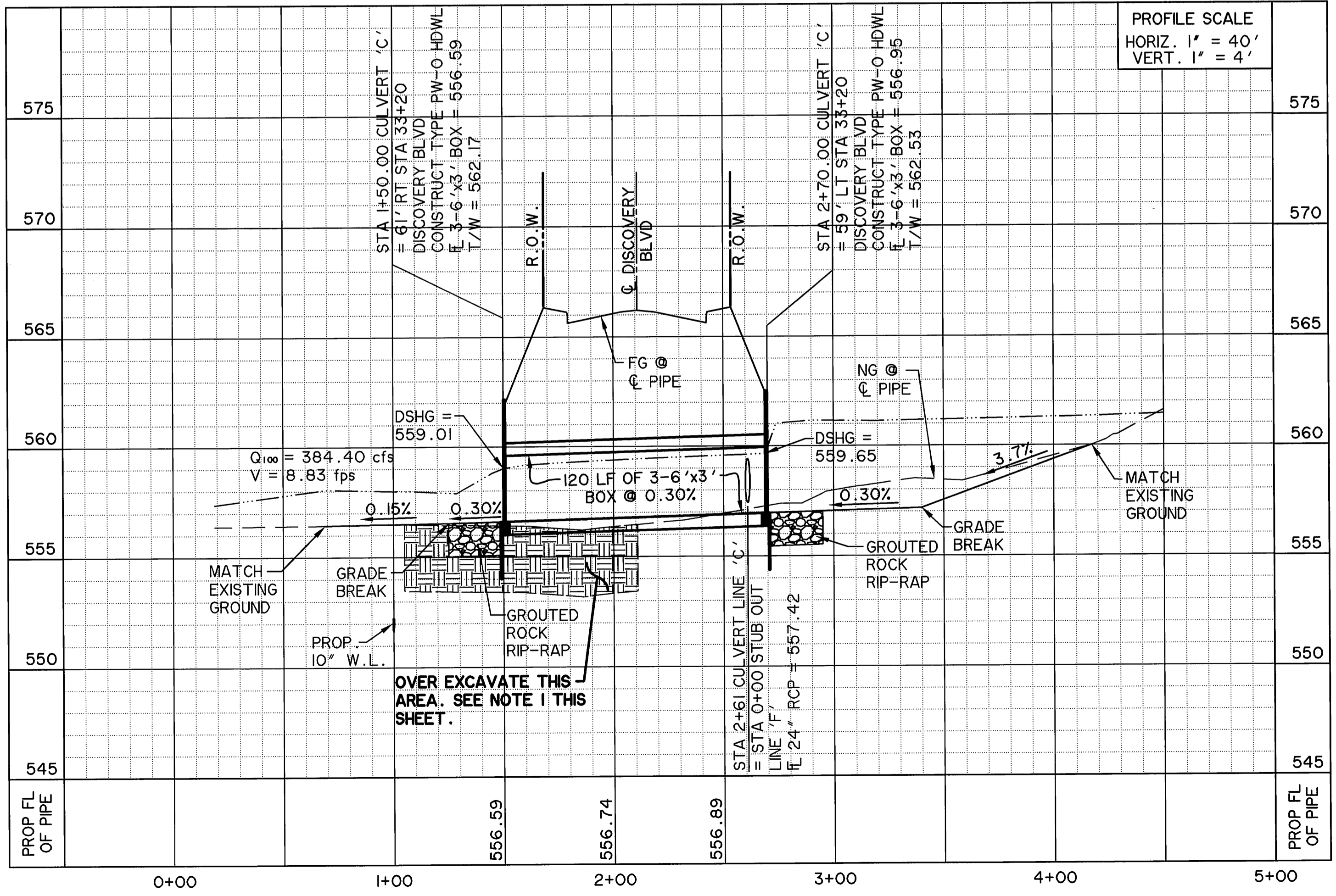


CAUTION !!
EXISTING UTILITIES ARE INDICATED ON THE PLANS FROM AVAILABLE INFORMATION. IT SHALL BE THE RESPONSIBILITY OF THE CONTRACTOR TO VERIFY THE LOCATION OF ALL UTILITIES, TO NOTIFY ALL UTILITY COMPANIES OF THE CONTRACTORS OPERATIONS, TO PROTECT ALL UTILITIES FROM DAMAGE, TO REPAIR ALL UTILITIES DAMAGED DUE TO THE CONTRACTORS OPERATIONS, AND TO NOTIFY THE ENGINEER PROMPTLY OF ALL CONFLICTS OF THE WORK WITH EXISTING UTILITIES.

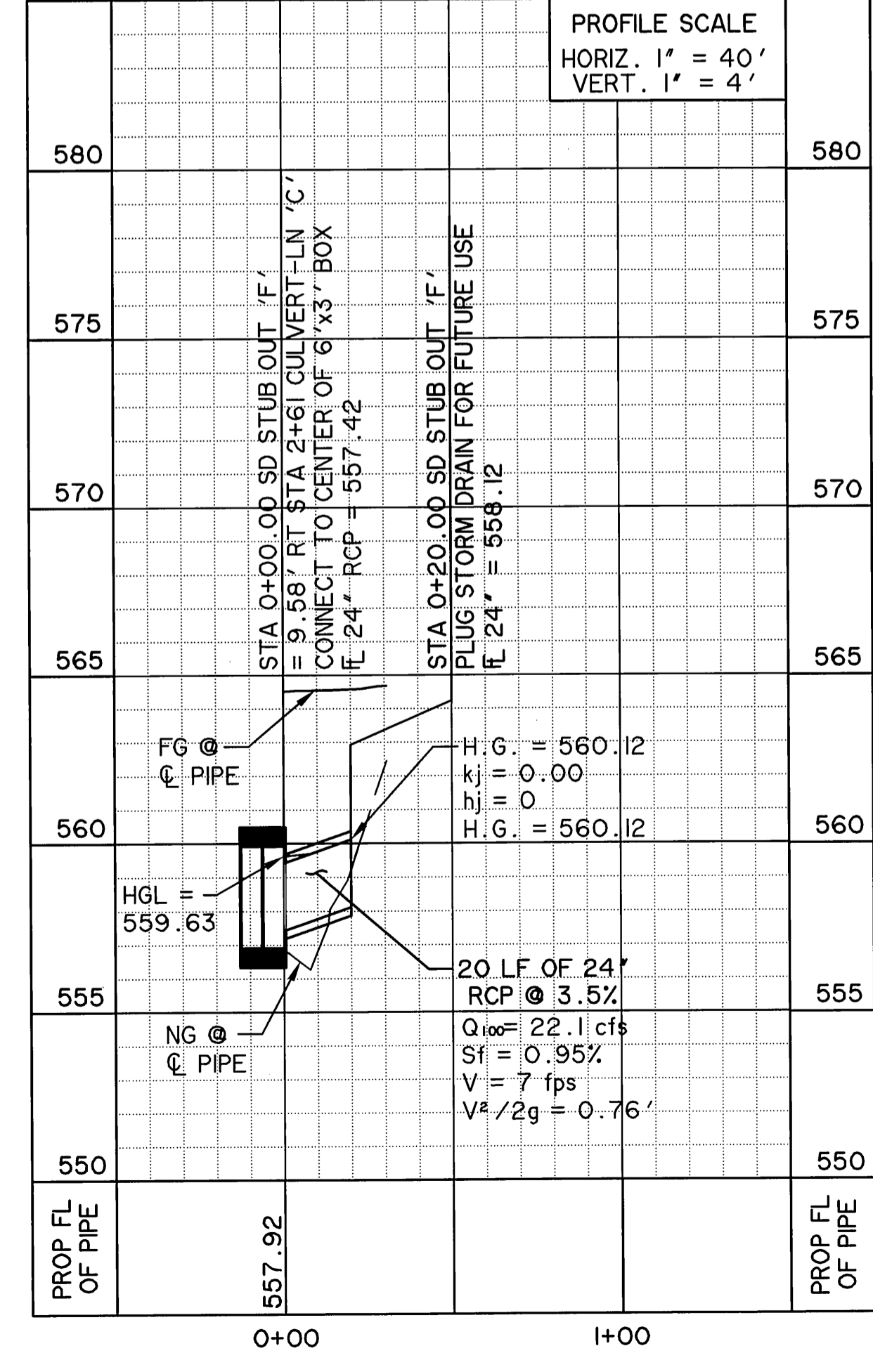
*** BENCH MARKS ***
BM A AN "X" ±195' EAST OF THE DEAD END OF DISCOVERY BOULEVARD AT THE WEST SIDE OF ROCKWALL TECHNOLOGY PARK, ±12' EAST OF THE PAVERS IN THE CENTERLINE OF DISCOVERY BOULEVARD. 585.45 FT.
BM B AN "□" CUT ON THE EAST MEDIAN NOSE DISCOVERY BOULEVARD +/- 90 FEET WEST OF THE INTERSECTION OF DISCOVERY BOULEVARD AND F.M. 549. 598.20 FT.

NOTE:
1. CONTRACTOR SHALL OVER EXCAVATE INDICATED AREAS A MINIMUM OF 3 FT DEEP OR UNTIL SUITABLE BEARING MATERIAL IS REACHED. EXCAVATED MATERIAL SHALL BE WORKED OFFSITE AND MAY BE USED IF DEEMED TO BE SUITABLE MATERIAL AS REQUIRED BY THE SPECIFICATIONS. RECOMPACT IN PLACE TO 95% PROCTOR PER SPECIFICATIONS.

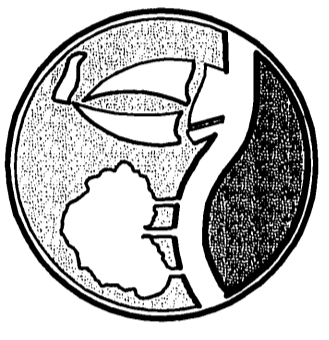
CULVERT - LINE 'C'



STUB OUT - LINE 'F'

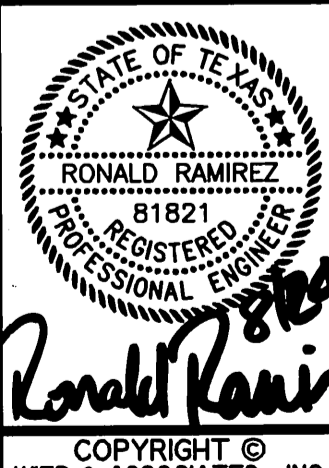


PREPARED BY:
WIER & ASSOCIATES, INC.
ENGINEERS SURVEYORS LAND PLANNERS
701 HIGHLANDER BLVD., SUITE 300 ARLINGTON, TEXAS 76015 METRO (817)467-7700
www.wierassociates.com
Registration No. F-2776
Texas Firm



DISCOVERY BLVD. EXTENSION TO JOHN KING BLVD.

STORM DRAIN PLAN AND PROFILE CULVERT - LINE 'C' STUB OUT - LINE 'F'



RECORD DRAWINGS
THESE AS-BUILT OR RECORD DRAWINGS (OR CORRECTED SPECIFICATIONS) HAVE BEEN PREPARED, IN PART, ON THE BASIS OF INFORMATION COMPILED AND FURNISHED BY OTHERS. THE ENGINEER WILL NOT BE RESPONSIBLE FOR ANY ERRORS OR OMISSIONS WHICH HAVE BEEN INCORPORATED INTO THIS DOCUMENT AS A RESULT.

SHEET NO. **D303**