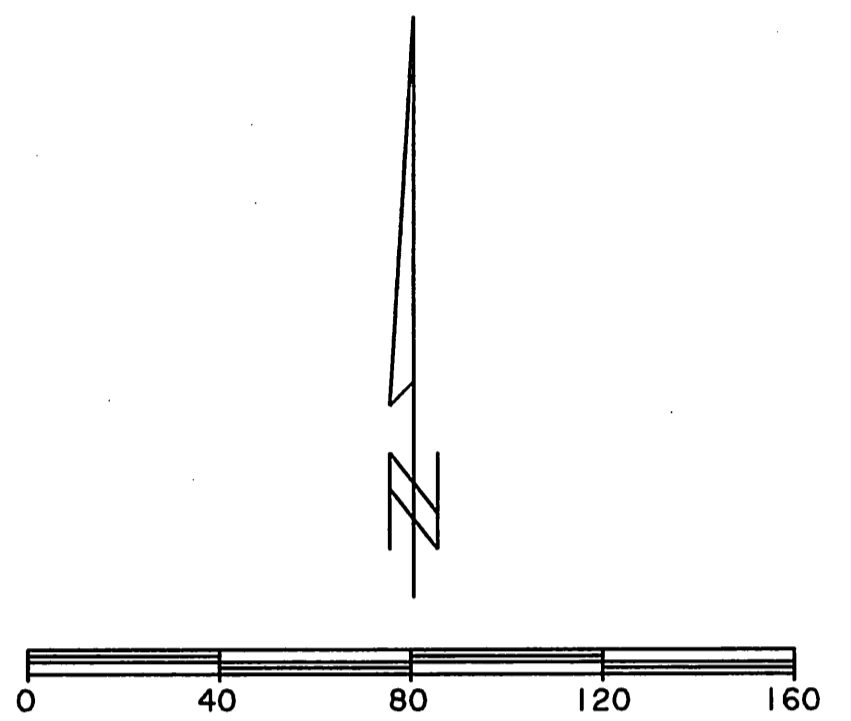
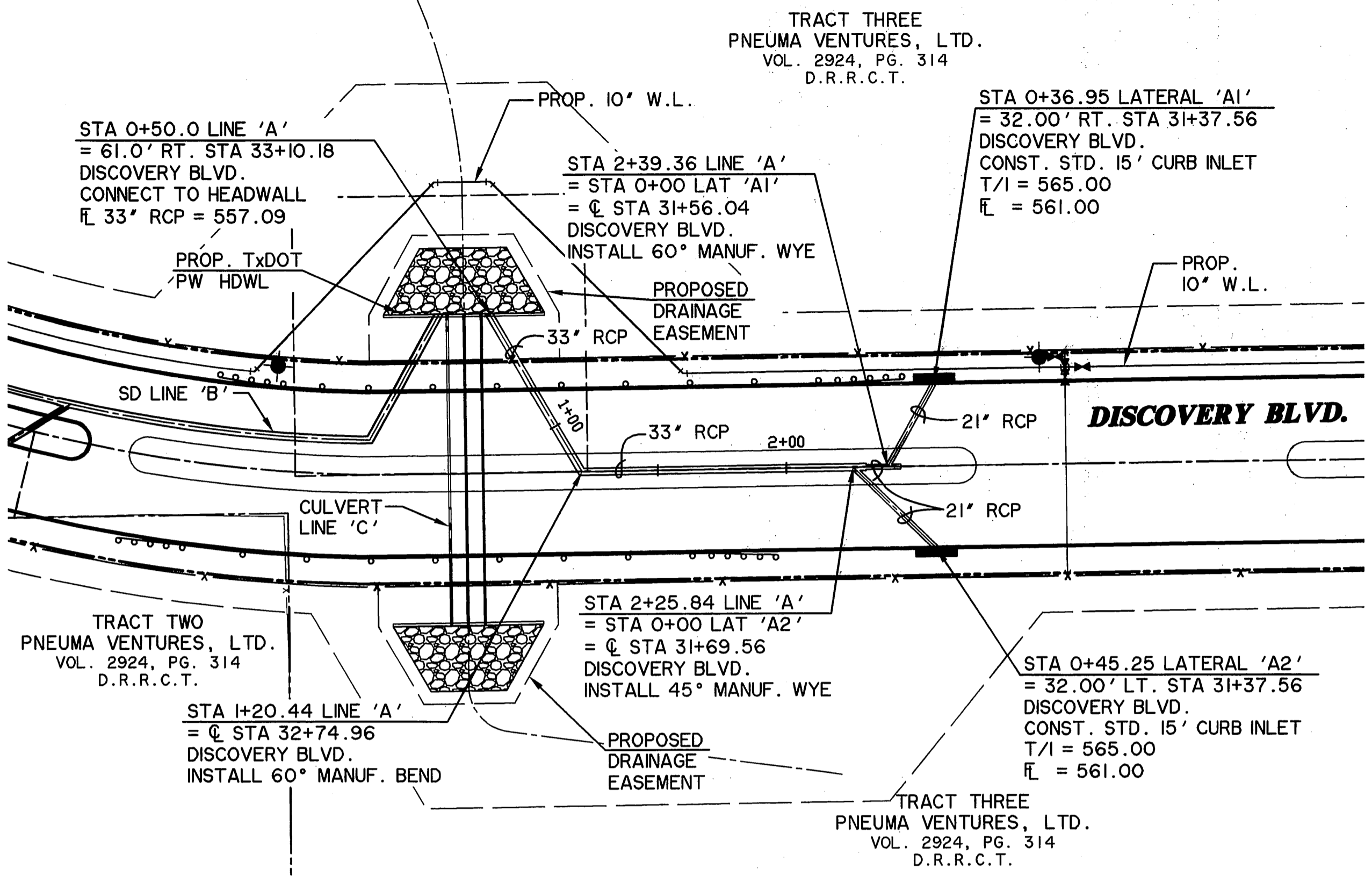


**CAUTION !!**  
 EXISTING UTILITIES ARE INDICATED ON THE PLANS FROM AVAILABLE INFORMATION. IT SHALL BE THE RESPONSIBILITY OF THE CONTRACTOR TO VERIFY THE LOCATION OF ALL UTILITIES, TO NOTIFY ALL UTILITY COMPANIES OF THE CONTRACTORS OPERATIONS, TO PROTECT ALL UTILITIES FROM DAMAGE, TO REPAIR ALL UTILITIES DAMAGED DUE TO THE CONTRACTORS OPERATIONS, AND TO NOTIFY THE ENGINEER PROMPTLY OF ALL CONFLICTS OF THE WORK WITH EXISTING UTILITIES.



**\* BENCH MARKS \***  
 BM A AN 'X' ±195' EAST OF THE DEAD END OF DISCOVERY BOULEVARD AT THE WEST SIDE OF ROCKWALL TECHNOLOGY PARK, ±12' EAST OF THE PAVERS IN THE CENTERLINE OF DISCOVERY BOULEVARD. 585.45 FT.  
 BM B AN 'C' CUT ON THE EAST MEDIAN NOSE DISCOVERY BOULEVARD +/- 90 FEET WEST OF THE INTERSECTION OF DISCOVERY BOULEVARD AND F.M. 549. 598.20 FT.

**RECORD DRAWINGS**  
 THESE AS-BUILT OR RECORD DRAWINGS (OR CORRECTED SPECIFICATIONS) HAVE BEEN PREPARED, IN PART, ON THE BASIS OF INFORMATION COMPILED AND FURNISHED BY OTHERS. THE ENGINEER WILL NOT BE RESPONSIBLE FOR ANY ERRORS OR OMISSIONS WHICH HAVE BEEN INCORPORATED INTO THIS DOCUMENT AS A RESULT.

**STORM DRAIN LINE 'A'**

PROP FL OF PIPE	STATION	DESCRIPTION	PROP FL OF PIPE
557.09	0+00	STA 0+50.00 SD LINE 'A' = TXDOT RW HEADWALL = 33' RCP = 557.09	557.09
557.36	1+00	STA 1+20.44 SD LINE 'A' = 60° MANUF. BEND = 33' RCP = 557.47	557.36
557.62	2+00	STA 2+25.84 SD LINE 'A' = STA 0+00 LAT 'A2' = 45° MANUF. WYE = 33' RCP = 558.00	557.62
557.87	2+00	STA 2+39.36 SD LINE 'A' = STA 0+00 LAT 'A1' = 60° MANUF. WYE = 21' RCP = 559.07	557.87
559.02	3+00	STA 2+44.44 SD LINE 'A' = 60° MANUF. BEND = 21' RCP = 559.10	559.02
559.07	3+00	STA 0+45.25 LATERAL 'A2' = 32.00' LT. STA 3+37.56 DISCOVERY BLVD. CONST. STD. 15' CURB INLET T/I = 565.00 = 561.00	559.07

PROP FL OF PIPE	STATION	DESCRIPTION	PROP FL OF PIPE
557.09	0+00	STA 0+50.00 SD LINE 'A' = TXDOT RW HEADWALL = 33' RCP = 557.09	557.09
557.36	1+00	STA 1+20.44 SD LINE 'A' = 60° MANUF. BEND = 33' RCP = 557.47	557.36
557.62	2+00	STA 2+25.84 SD LINE 'A' = STA 0+00 LAT 'A2' = 45° MANUF. WYE = 33' RCP = 558.00	557.62
557.87	2+00	STA 2+39.36 SD LINE 'A' = STA 0+00 LAT 'A1' = 60° MANUF. WYE = 21' RCP = 559.07	557.87
559.02	3+00	STA 2+44.44 SD LINE 'A' = 60° MANUF. BEND = 21' RCP = 559.10	559.02
559.07	3+00	STA 0+45.25 LATERAL 'A2' = 32.00' LT. STA 3+37.56 DISCOVERY BLVD. CONST. STD. 15' CURB INLET T/I = 565.00 = 561.00	559.07

**LAT. 'A1'**

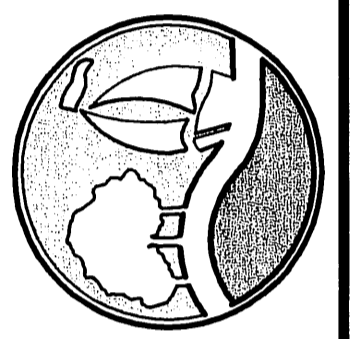
PROP FL OF PIPE	STATION	DESCRIPTION	PROP FL OF PIPE
559.07	0+00	STA 0+45.25 LATERAL 'A2' = 32.00' LT. STA 3+37.56 DISCOVERY BLVD. CONST. STD. 15' CURB INLET T/I = 565.00 = 561.00	559.07
561.02	0+00	STA 0+00 LAT 'A1' = STA 2+39.36 SD LINE 'A' = 21' RCP = 559.07	561.02
562.75	0+00	STA 0+36.95 LATERAL 'A1' = 32.00' RT. STA 3+37.56 DISCOVERY BLVD. CONST. STD. 15' CURB INLET T/I = 565.00 = 561.00	562.75
563.49	0+00	STA 0+00 LAT 'A1' = STA 2+39.36 SD LINE 'A' = 21' RCP = 559.07	563.49

**LAT. 'A2'**

PROP FL OF PIPE	STATION	DESCRIPTION	PROP FL OF PIPE
558.50	0+00	STA 0+45.25 LATERAL 'A2' = 32.00' LT. STA 3+37.56 DISCOVERY BLVD. CONST. STD. 15' CURB INLET T/I = 565.00 = 561.00	558.50
560.75	0+00	STA 0+00 LAT 'A2' = STA 2+25.84 SD LINE 'A' = 33' RCP = 558.00	560.75
562.75	0+00	STA 0+36.95 LATERAL 'A1' = 32.00' RT. STA 3+37.56 DISCOVERY BLVD. CONST. STD. 15' CURB INLET T/I = 565.00 = 561.00	562.75
563.62	0+00	STA 0+00 LAT 'A2' = STA 2+25.84 SD LINE 'A' = 33' RCP = 558.00	563.62

TIME 11:57 FILE: D301-SD-LN-A\_9804110.dwg

PREPARED BY:  
**WIER & ASSOCIATES, INC.**  
 ENGINEERS SURVEYORS LAND PLANNERS  
 701 HIGHLANDER BLVD., SUITE 300 ARLINGTON, TEXAS 76015 METRO (817)467-7700  
 6849 ELM STREET FRISCO, TEXAS 75034 METRO (214)387-8000  
 www.WierAssociates.com



**DISCOVERY BLVD. EXTENSION TO JOHN KING BLVD.**

**STORM DRAIN LINE 'A' PLAN AND PROFILE**

STATE OF TEXAS  
 RONALD RAMIREZ  
 81821  
 REGISTERED PROFESSIONAL ENGINEER  
 3/11/09  
 Ronald Ramirez  
 COPYRIGHT © WIER & ASSOCIATES, INC.  
 LAST SHEET EDIT DATE 03-11-2009  
 SHA# 98041.10  
**SHEET NO. D301**