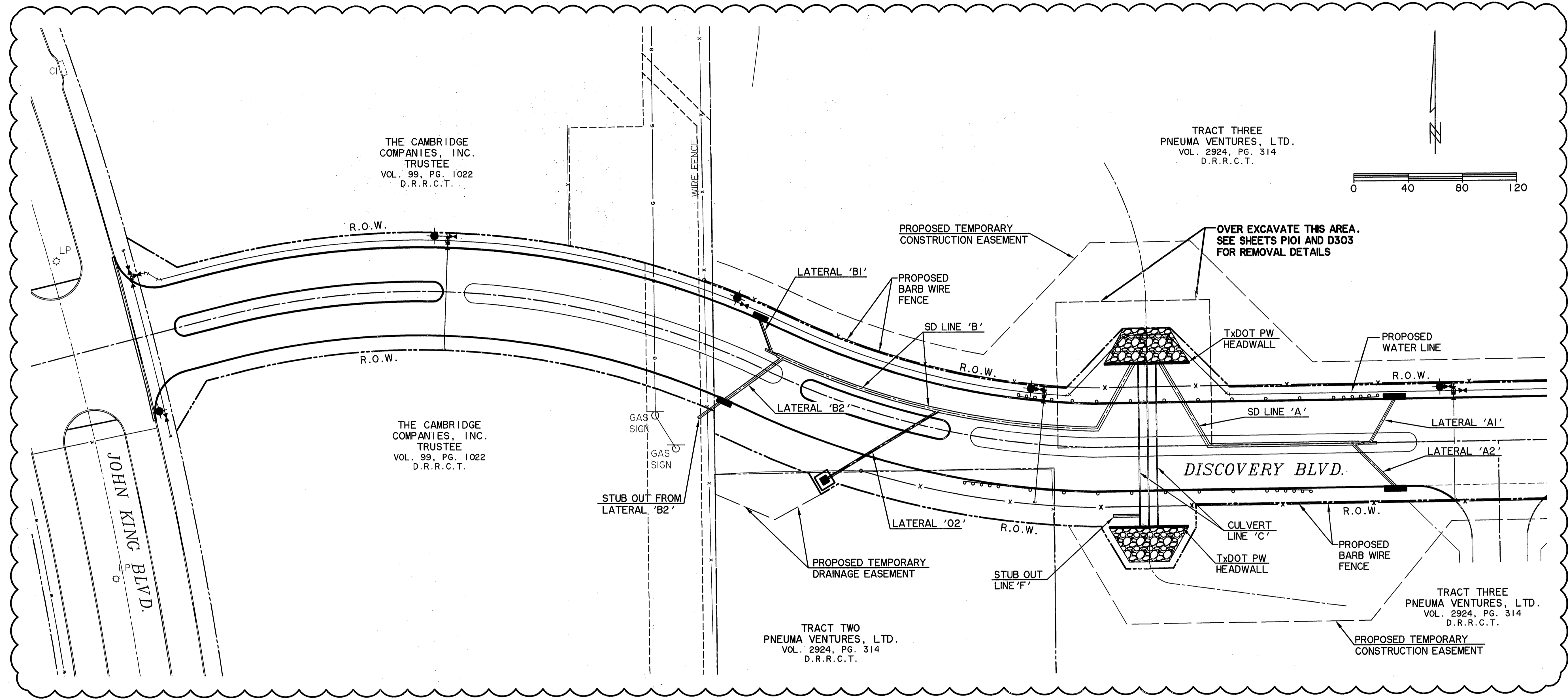
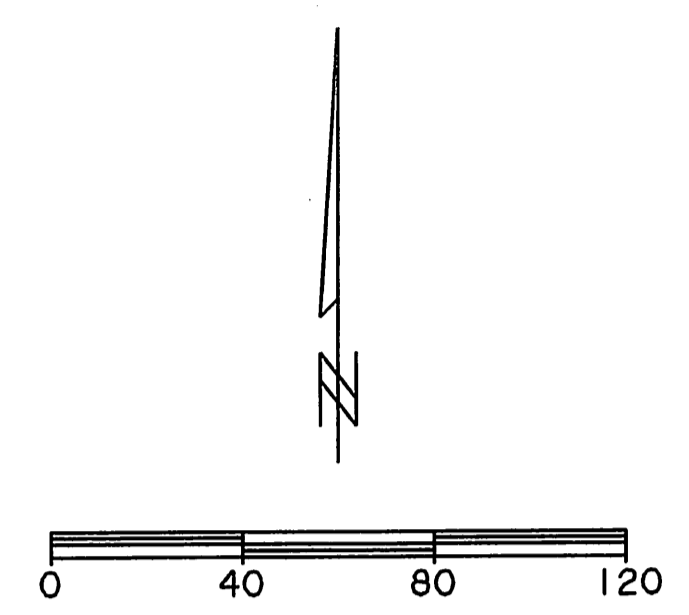


FILE: D300-SP-LAYOUT_98041.IO REVISED 1-11-2011.dwg

TIME: 10:39



CAUTION !!
EXISTING UTILITIES ARE INDICATED ON THE PLANS FROM AVAILABLE INFORMATION. IT SHALL BE THE RESPONSIBILITY OF THE CONTRACTOR TO VERIFY THE LOCATION OF ALL UTILITIES, TO NOTIFY ALL UTILITY COMPANIES OF THE CONTRACTORS OPERATIONS, TO PROTECT ALL UTILITIES FROM DAMAGE, TO REPAIR ALL UTILITIES DAMAGED DUE TO THE CONTRACTORS OPERATIONS, AND TO NOTIFY THE ENGINEER PROMPTLY OF ALL CONFLICTS OF THE WORK WITH EXISTING UTILITIES.



PREPARED BY:
WIER & ASSOCIATES, INC.
ENGINEERS SURVEYORS LAND PLANNERS
701 HIGHLANDER BLVD., SUITE 300 ARLINGTON, TEXAS 76015 METRO (817)467-7700
8849 ELM STREET FRISCO, TEXAS 75034 METRO (214)387-8000
Texas Firm Registration No. F-2776 www.wierassociates.com



DISCOVERY BLVD. EXTENSION TO JOHN KING BLVD.

STORM DRAIN LAYOUT

RECORD DRAWINGS
THESE AS-BUILT OR RECORD DRAWINGS (OR CORRECTED SPECIFICATIONS) HAVE BEEN PREPARED, IN PART, ON THE BASIS OF INFORMATION COMPILED AND FURNISHED BY OTHERS. THE ENGINEER WILL NOT BE RESPONSIBLE FOR ANY ERRORS OR OMISSIONS WHICH HAVE BEEN INCORPORATED INTO THIS DOCUMENT AS A RESULT.

REVISIONS
SHEET REVISED 1/11/2011
REVISOR: [Symbol] REVISED SHEET TO SHOW UPDATED DISCOVERY BOULEVARD R.O.W. AND EASEMENTS.

*** BENCH MARKS ***
BM A AN "X" ±195' EAST OF THE DEAD END OF DISCOVERY BOULEVARD AT THE WEST SIDE OF ROCKWALL TECHNOLOGY PARK, ±12' EAST OF THE PAVERS IN THE CENTERLINE OF DISCOVERY BOULEVARD. 585.45 FT.
BM B AN "□" CUT ON THE EAST MEDIAN NOSE DISCOVERY BOULEVARD +/- 90 FEET WEST OF THE INTERSECTION OF DISCOVERY BOULEVARD AND F.M. 549. 598.20 FT.

COPYRIGHT © WIER & ASSOCIATES, INC.
LAST SHEET EDIT DATE 01/11/2011
WA# 98041.IO
SHEET NO. D300