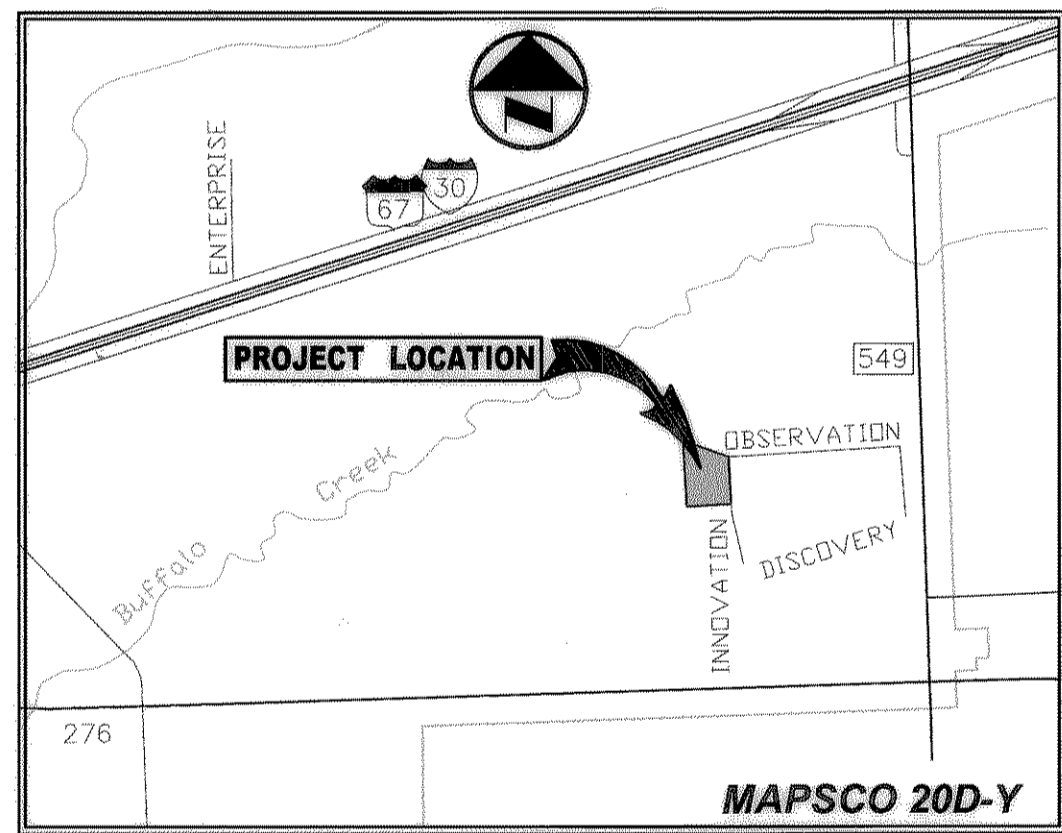


**CONSTRUCTION PLANS
FOR
COLMET WAREHOUSE
LOT 3, BLOCK C
ROCKWALL TECHNOLOGY PARK
8.840 ACRES
J.M. ALLEN SURVEY, ABSTRACT No. 2,
CITY OF ROCKWALL, ROCKWALL COUNTY, TEXAS**

FOR
HARDY McCULLAH/MLM ARCHITECTS
12221 MERIT DRIVE, SUITE 280
DALLAS, TEXAS 75251

PREPARED BY

Pacheco Koch Consulting Engineers
8350 N CENTRAL EXPWY SUITE 1000 DALLAS, TEXAS 75206 972.235.3031



VICINITY MAP

DRAWING SHEET INDEX

SHEET	DESCRIPTION
-	COVER SHEET
C1.0	DIMENSIONAL CONTROL PLAN
C3.0	STORM SEWER PLAN
C3.1	STORM SEWER PROFILES
C4.0	WATER & SANITARY SEWER PLAN
C5.0	PAVING PLAN AND DETAILS

RECORD DRAWING
THIS DRAWING HAS BEEN REVISED TO REFLECT CONSTRUCTION RECORDS MAINTAINED AND PROVIDED BY THE CONTRACTOR FOR THIS PROJECT.
CONTRACTOR: BOB MOORE CONSTRUCTION
DATE REVISED: 03/15/2004



THE SEAL APPEARING ON THIS DOCUMENT WAS AUTHORIZED BY STEVEN A. MARKUSSEN, P.E. 70090 ON 05/05/03. ALTERATION OF A SEALED DOCUMENT WITHOUT PROPER NOTIFICATION TO THE RESPONSIBLE ENGINEER IS AN OFFENSE UNDER THE TEXAS ENGINEERING PRACTICE ACT.