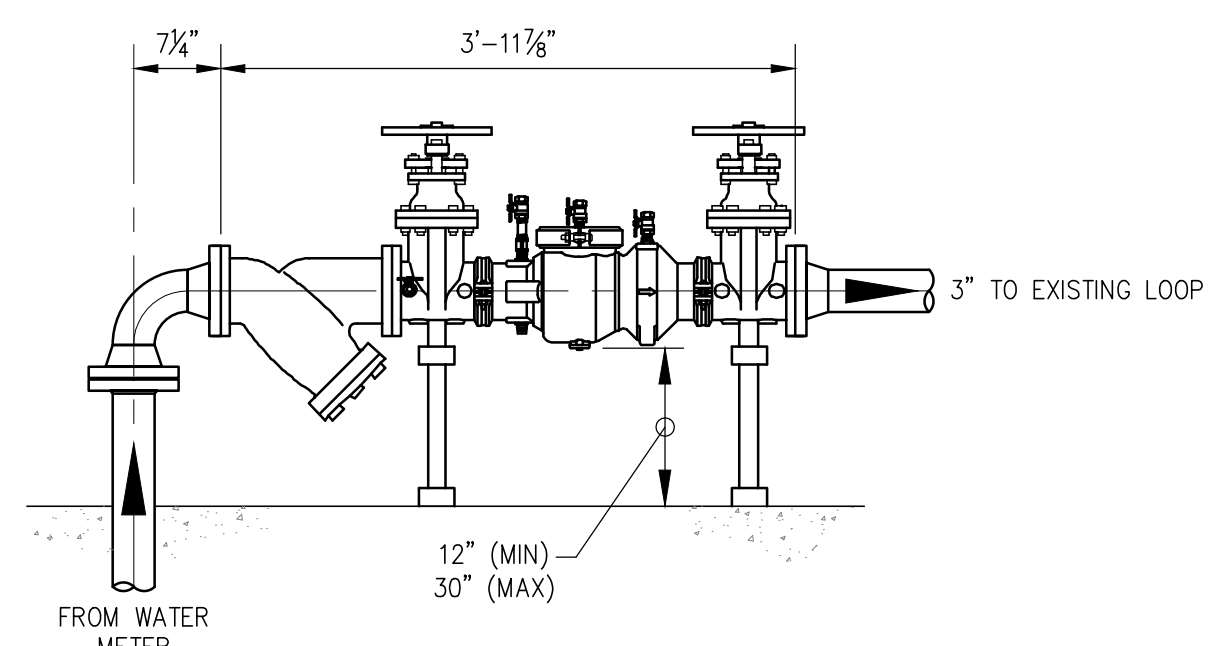
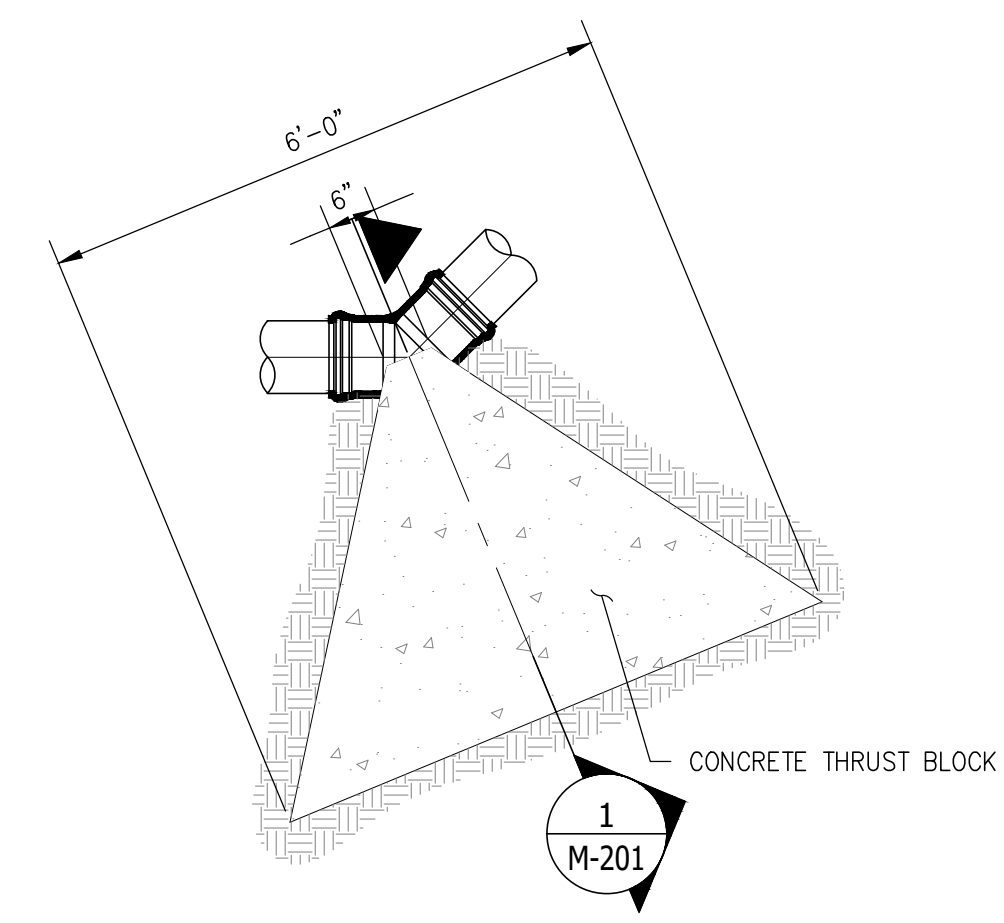


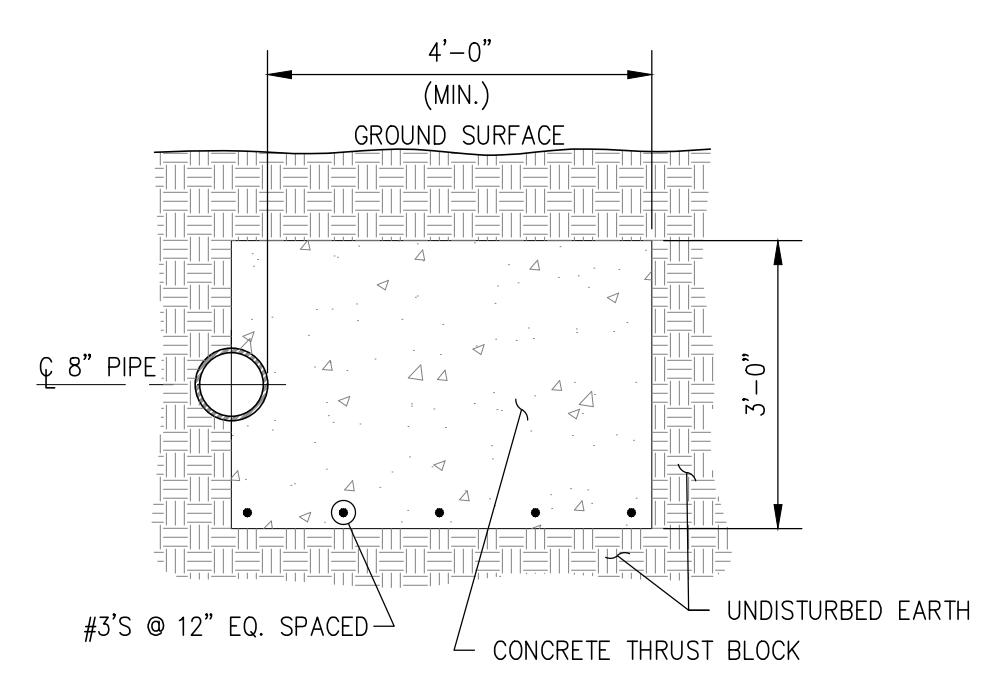
BACKFLOW PREVENTER ASSEMBLY - DETAIL
 SCALE: NONE



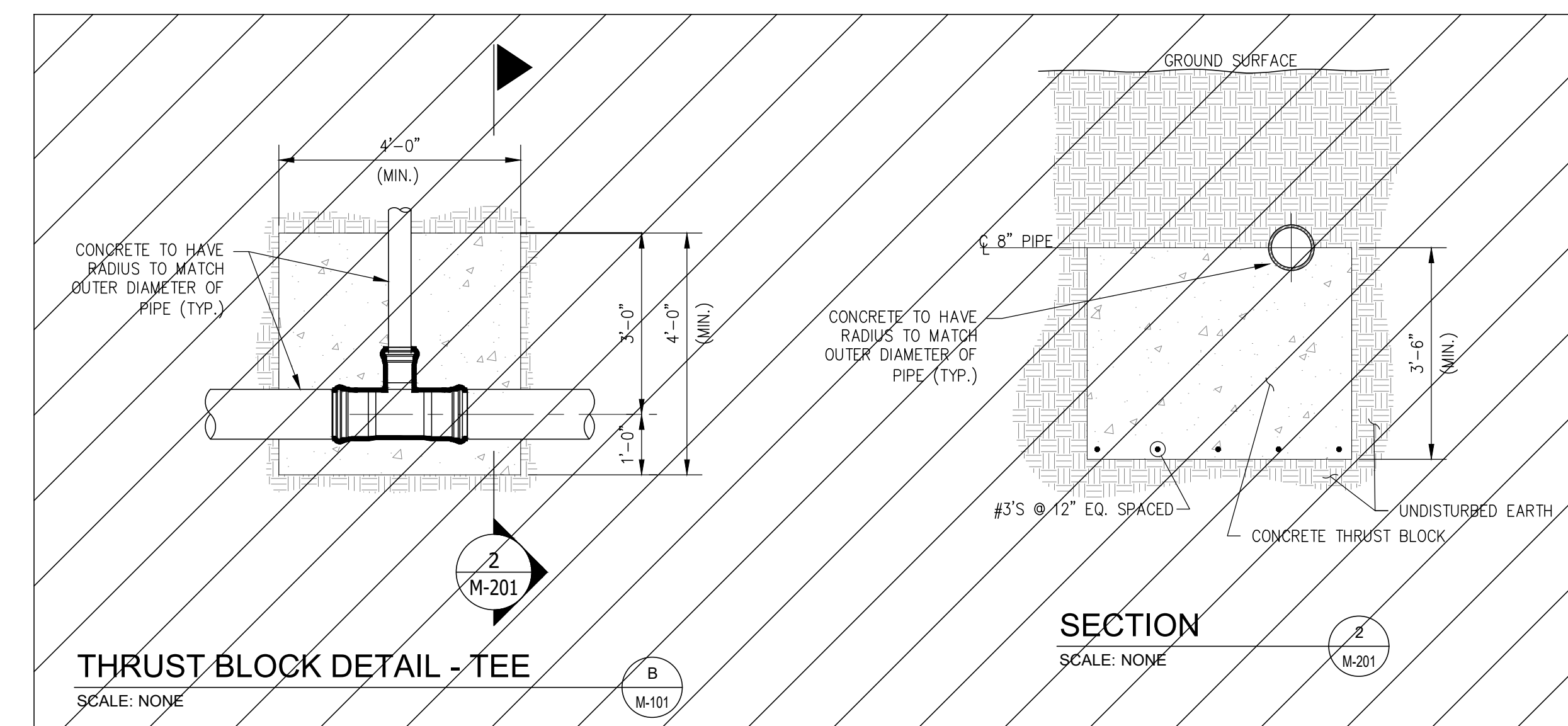
BACKFLOW PREVENTER ASSEMBLY - ELEVATION
 SCALE: NONE



THRUST BLOCK DETAIL - 45° BEND
 SCALE: NONE



SECTION 1
 SCALE: NONE




THRUST BLOCK DETAIL - TEE
 SCALE: NONE

SECTION 2
 SCALE: NONE

VOID

- NOTES:**
1. NEW BACKFLOW PREVENTER TO BE ZURN WILKINS MODEL 350A-OSY WITH STRAINER OPTION OR EQUIVALENT.
 2. NEW PIPE AND FITTINGS TO BE BLUE BRUTE (AWWA C900 - DR 14 CLASS 200) WITH BELL AND SPIGOT JOINTS TO MATCH EXISTING.
 3. THRUST BLOCK CONCRETE SHALL BE NORMAL WEIGHT AND SHALL HAVE A MINIMUM COMPRESSIVE STRENGTH OF 4000 P.S.I. IN 28 DAYS.
 4. ALL REINFORCING STEEL SHALL BE DEFORMED BILLET STEEL CONFORMING TO ASTM A-615, GRADE 60.
 5. REPLACE CONCRETE PAVING AS REQUIRED WITH 6" THK. CONCRETE WITH #4 REBARS @ 18" E.W., (3600 PSI THAT REQUIRES 6.5 SACK MIX MINIMUM). BATCH DESIGN WILL NEED TO BE APPROVED BY ENGINEERING PRIOR TO PLACEMENT. AN ENGINEERING INSPECTION OF THE REBAR AND SUBGRADE IS REQUIRED PRIOR TO PLACEMENT OF CONCRETE.

AS-BUILT
 07/13/2018

 Pegasus Foods, Inc.		PEGASUS FOODS, INC. BACKFLOW PREVENTER & THRUST BLOCK SECTIONS & DETAILS SITE LOCATION: ROCKWALL, TEXAS	
REVISIONS		REFERENCE DRAWINGS	
NO.	COMMENTS	BY	DATE
0	ISSUED FOR CONSTRUCTION	WPJ	08/09/2017
1	POUR BACK CONCRETE NOTE ADDITION	WPJ	09/13/2017
2	TEE ADDITION	WPJ	10/19/2017
3	AS-BUILT PER CONTRACTOR COMMENTS	JH	07/13/2018
DESIGNER WPJ 17158		CHECKED BY JCG 06/30/2017	
SCALE AS NOTED		APPROVED BY MJR 08/30/2017	
DRAWING NO. M-201		REV. 3	