

LEGEND

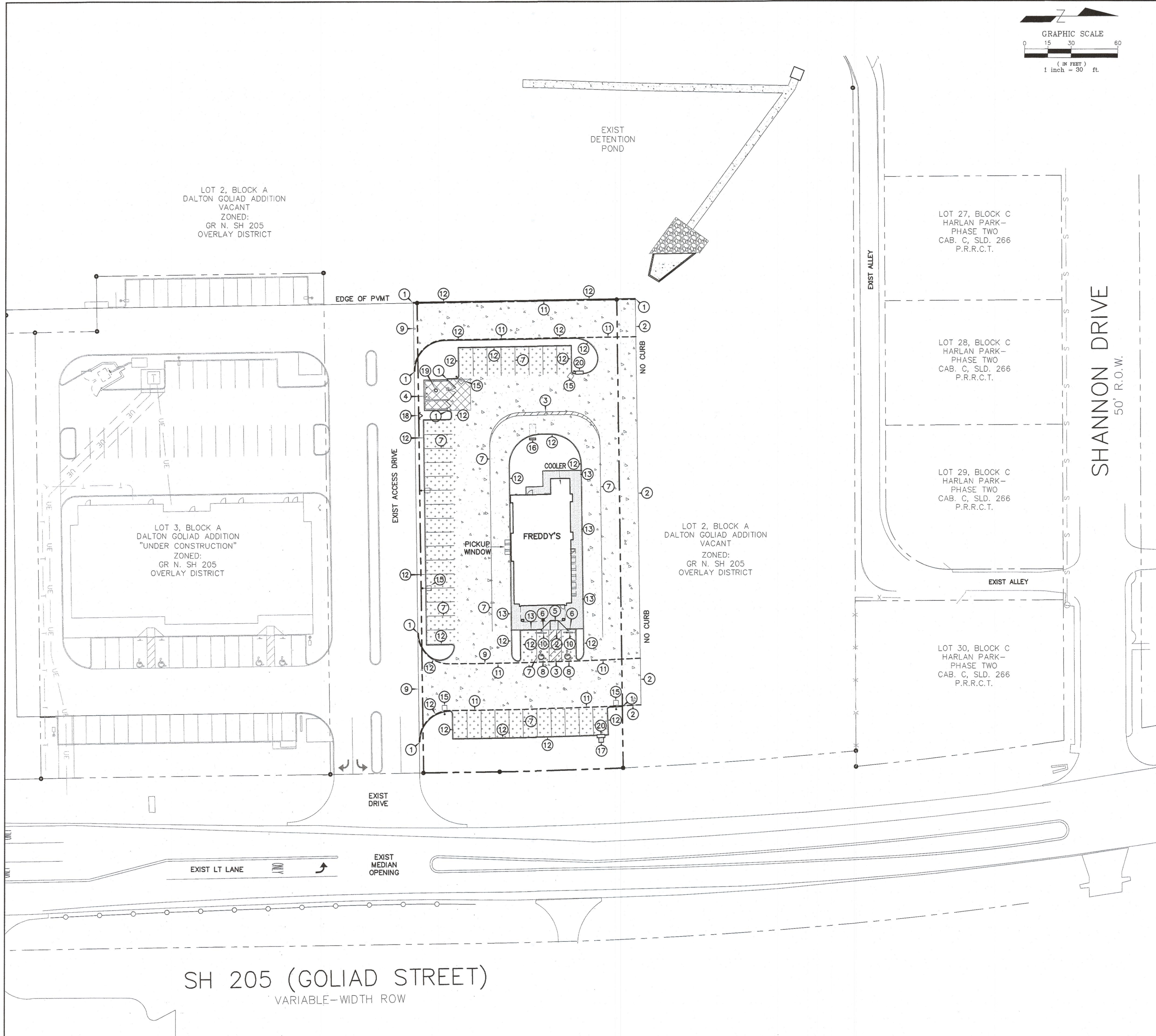
	PROP. 6" INTEGRAL CURB
	PROP PROPERTY LINE
	EXISTING CURB/PAVEMENT
	PROP 4" CONC SIDEWALK
	PROP 5" CONC PAVEMENT (REF DTL SHT C7)
	PROP 7" CONC PAVEMENT (REF DTL SHT C7)
	PROP 8" CONC PVMT (REF DTL SHT C7)
	LIGHT POLE

BENCHMARK:
 MONUMENT 179.7' WEST OF WEST EDGE OF SH 205 PAVEMENT AND 6.8' NORTH OF BACK OF CURB DALTON ROAD. ELEVATION = 541.57'

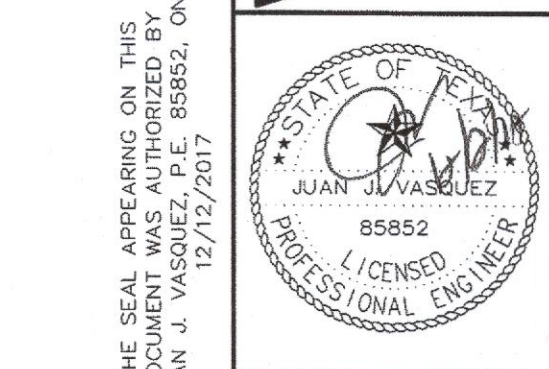
- NOTES:**
- EXISTING TOPOGRAPHY BASED ON SURVEY PREPARED BY PEISER & MANKIN SURVEYING, LLC DATED 1/14/2016.
 - SEE SHEET C1 FOR DIMENSIONAL CONTROL.
 - SEE SHEET C7 FOR PAVING DETAILS & GENERAL NOTES.

- PAVING NOTES:**
- CONTRACTOR SHALL BE RESPONSIBLE FOR ADJUSTING WATER AND SANITARY SEWER APPURTENANCES PER CITY STANDARDS.
 - CONTRACTOR SHALL REMOVE EXCESS SOILS AND DEBRIS FROM SITE AND DISPOSE OF IN A LEGAL MANNER OFF SITE.
 - SOIL SHALL BE IN A MOIST AND COMPACTED CONDITIONS PRIOR TO PLACEMENT OF THE CONCRETE.
 - CONCRETE SHALL BE AS SHOWN ON THE PLANS. CONCRETE TO THE DEPTHS SHOWN ON THE PLANS.
 - REINFORCING STEEL SHALL BE SUPPORTED BY PLASTIC CHAIRS IN A MANNER TO PROVIDE A UNIFORM MESH CLEARANCE PER THE PROJECT DETAILS IN THE PLANS OR REQUIRED BY THE CITY. CONTRACTOR SHALL OBTAIN AND PAY FOR ANY PERMITS REQUIRED.
 - SURFACE FINISHING SHALL BE SKID RESISTANT AND A LIQUID CURING COMPOUND SHALL BE UNIFORMLY APPLIED ON THE CONCRETE IMMEDIATELY AFTER THE FINISHING OPERATION.
 - EXPANSION JOINTS OR ISOLATION JOINTS SHALL BE USED TO ISOLATE FIXED OBJECTS ABUTTING OR WITHIN THE PAVED AREAS. THEY SHOULD CONTAIN PREMOULDED JOINT FILLER FOR THE FULL DEPTH OF THE PAVEMENT AND BE SEALED PRIOR TO ALLOWING TRAFFIC.
 - EXPANSION JOINTS SHALL BE AS NOTED ON THE PLAN. SAWS JOINTS SHALL BE PLACED AT 15 FT MAX INTERVALS FOR AND CONSTRUCTION JOINTS SHALL BE LOCATED AT SAWS JOINTS OR EXPANSION JOINTS.
 - CONSTRUCT LONGITUDINAL BUTT JOINT WHERE EXISTING PAVEMENT MEETS PROPOSED PAVEMENT REFERENCE DETAIL IN PLANS.

- | | |
|---|--|
| ① | END CURB |
| ② | NO CURB |
| ③ | STRIPED AISLE (REF DTL SHT C7) |
| ④ | DUMPSTER ENCLOSURE (REF ARCH PLANS) |
| ⑤ | ON-SITE BARRIER FREE RAMP TYPE I (REF DTL SHT C7) |
| ⑥ | ACCESSIBLE SIGN (REF DTL SHT C7) |
| ⑦ | 4" WIDE WHITE STRIPE (REF DTL SHT C7) |
| ⑧ | INTERNATIONAL ACCESSIBLE SYMBOL (TYP) (REF DTL SHT C7) |
| ⑨ | CONSTRUCT LONG BUTT JOINT (REF DTL SHT C7) |
| ⑩ | WHEEL STOP (REF DTL SHT C7) |
| ⑪ | FIRE LANE (PER CITY STDS) |
| ⑫ | 6" INTERGRAL CURB (REF DTL SHT C7) |
| ⑬ | SIDEWALK/CURB (REF DTL SHT C7) |
| ⑭ | NOT USED |
| ⑮ | LIGHT POLE (REF ARCH PLANS) |
| ⑯ | ORDER MENU (REF ARCH PLANS) |
| ⑰ | CONC FLUME (REF DTL SHT C3) |
| ⑱ | FDC (PER CITY FIRE DEPT STDS) |
| ⑲ | 12" AREA DRAIN W/ TRAFFIC RATED LID (SEE SHT C3) |
| ⑳ | 5" CURB INLET (SEE SHT C3) |



VASQUEZ ENGINEERING, L.L.C.
 1919 S. Shiloh Road
 Suite 440, LB 44
 Garland, Texas 75042
 Ph: 972-278-2948
 TX Registration # F-12266



DEVELOPER:
 MCCLURE PARTNERS
 P.O. BOX 802047
 DALLAS, TX 75380

PAVING PLAN
 LOT 4, BLOCK A
 DALTON GOLIAD ADDITION
 CITY OF ROCKWALL, TEXAS

Scale: 1" = 30'
 Designed by: JIV
 Drawn by: JIV
 Checked by: JIV
 608-080403-C2-DWG CTRL PAVING PLAN.dwg
 Date: 12/12/2017

SHEET
C2