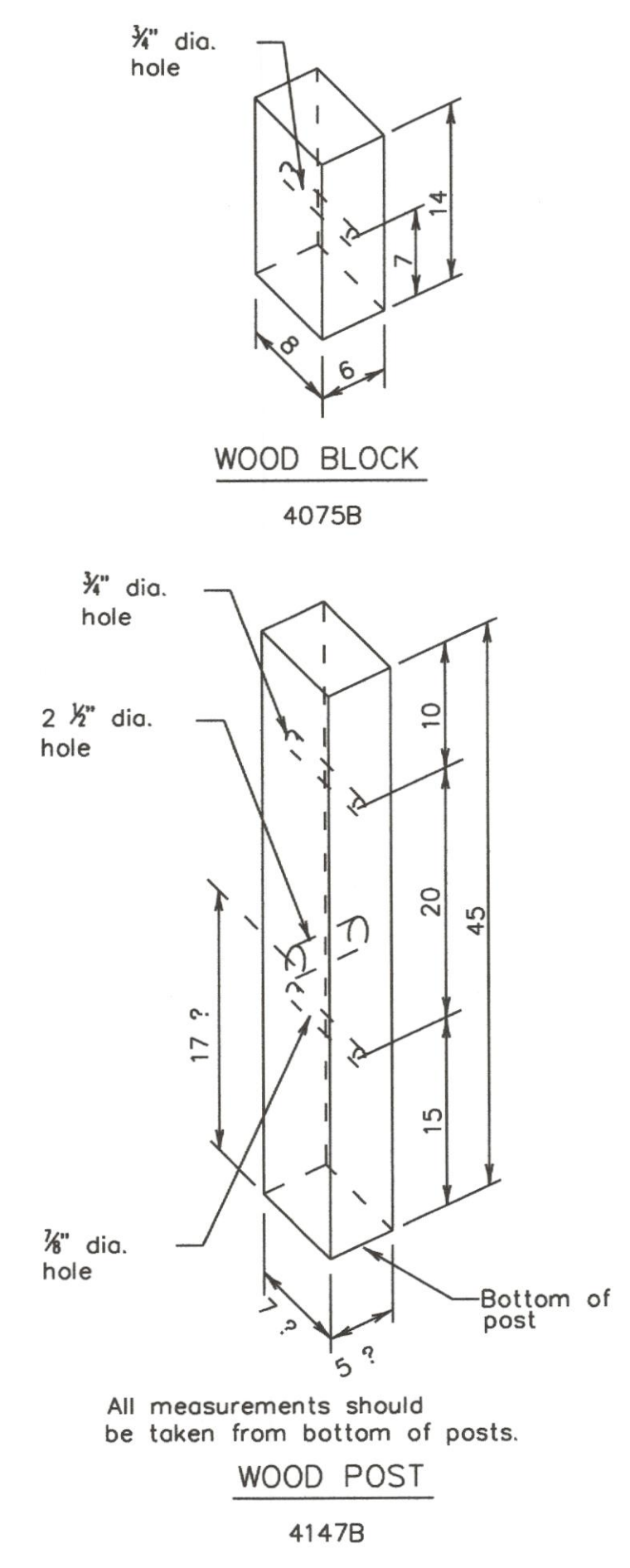
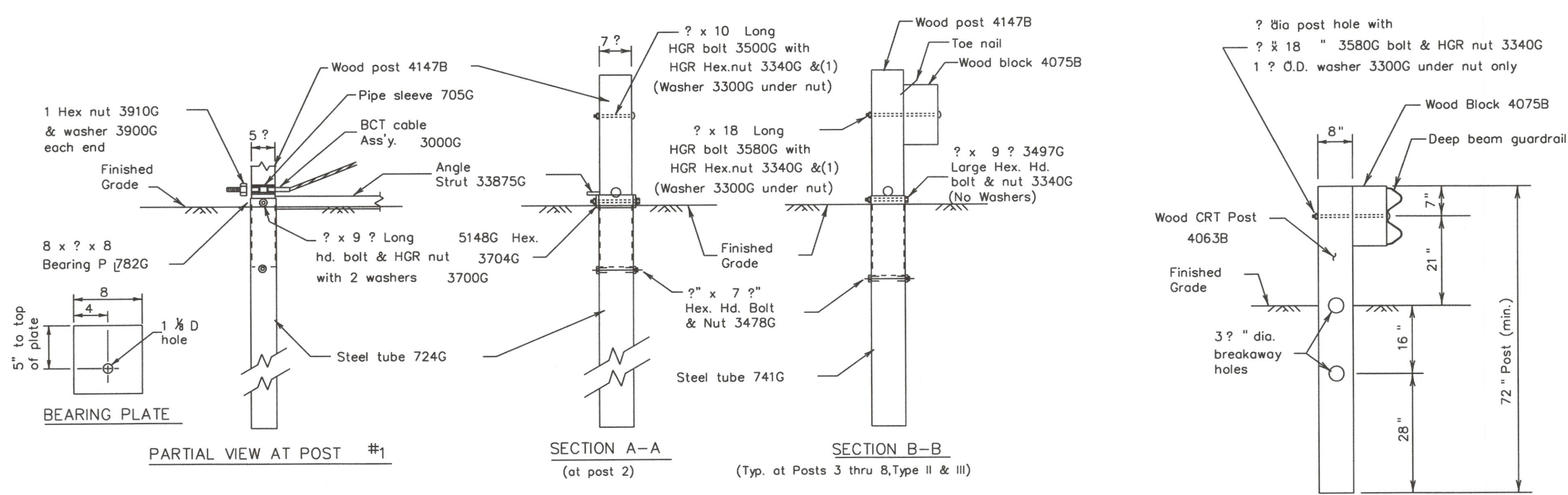
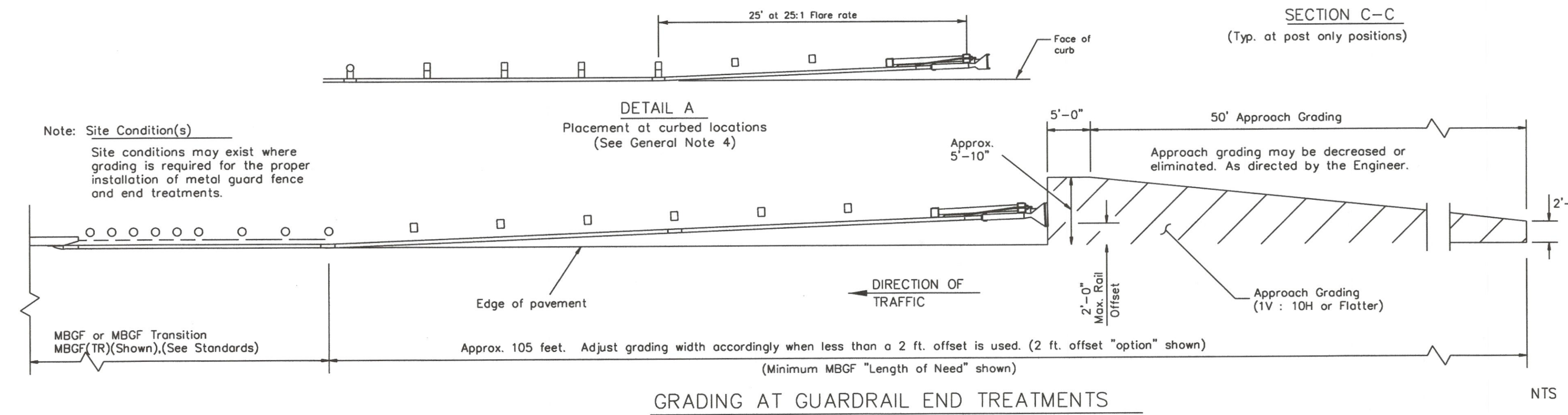


- GENERAL NOTES**
- The Type of SGT unit will be specified elsewhere in the plans. Numbers in circles indicate post position. The Type of SGT unit chosen is a maintenance consideration and does not affect the systems performance.

Post & Tube Options		Post Only	
Type I	Posts 1 thru 2	○ Posts 3 thru 4	○
Type II	Posts 1 thru 4	○ Posts 5 thru 8	○
Type III	Posts 1 thru 8	○ None	○
 - SGT's placed within the "minimum" 150 ft. radius, shall be installed straight. Standard rail elements may be installed within the radius, without special fabrication.
 - All bolts, nuts, cable assemblies, cable anchors, steel tubes & bearing plates shall be galvanized.
 - At non-curbed locations, a flare rate of 25:1 may be used over the first 50 ft. of the system to prevent the terminal head from encroaching on the shoulder. The flare may be decreased or eliminated for specific installations, if directed by the Engineer. At curbed locations, a flare rate of 25:1 shall be used beginning at post number 5 and ending at post number 1.
 - The steel tubes shall not protrude more than 4 inches above ground. Site grading may be necessary to meet this requirement.
 - The steel tubes may be driven with an approved driving head. They shall not be driven with the wood post in the tube. If the steel tubes are placed in drilled holes, the backfill material must be satisfactorily compacted to prevent tube settlement.
 - If solid rock is encountered. See the manufacturer's installation manual for the proper installation guidance.
 - The breakaway cable assembly must be taut. A locking device, (vice grips or channel lock pliers) should be used to prevent the cable from twisting when tightening the nuts.
 - The wood blocks shall be "toe nailed" to the rectangular wood posts to prevent them from turning when the wood shrinks.
 - For curb installations, the soil tubes and posts shall be installed at the proper ground elevation behind the curb. The posts will then require field drilling new holes to accommodate the rail to post connection bolt to maintain the proper height of the rail above the gutter pan. The excess post length above the rail will be removed if directed by the Engineer.
 - An object marker shall be installed on the front of the impact head as detailed on D&OM(VIA).
 - A special site evaluation should be considered, prior to using this end treatment where there is less than 25 feet between the extrusion side of the end treatment and any adjacent driving lane.



BILL OF MATERIAL						
Code #	POST & TUBE OPTIONS			DESCRIPTION		
	Type I Qty.	Type II Qty.	Type III Qty.			
62G	1	1	1	#1 Deep Beam Guardrail (12 Ga) at 25'		
60G	1	1	1	#2 Deep Beam Guardrail (12 Ga) at 25'		
724G	2	2	2	Steel Tube - 6" x 8" x 72" x ?" min		
741G	0	2	6	Steel Tube - 6" x 8" x 54" x ?" min		
4147B	2	4	8	Wood Posts - 5 ? x 7 ? x 45 "		
4063B	6	4	0	Wood CRT Posts - 6 x 8 x 72 "		
4075B	6	6	6	Wood Block - 6 x 8 x 14 "		
705G	1	1	1	Pipe Sleeve - 2 std. pipe x 5 ? "		
782G	1	1	1	Bearing Plate - 8 x 8 x ?" "		
704A	1	1	1	Cable Anchor		
3000G	1	1	1	Cable Assembly (? x 78) "		
33875G	1	1	1	Angle Strut		
995A	1	1	1	ET-2000 Plus Guardrail Terminal		
HARDWARE						
5148G	2	2	2	? x 9 ?" Hex Hd (Top of tubes 1&2)A325		
3300G	7	7	7	? Washers		
3478G	2	4	8	? x 7 ? Hex Bolt		
3500G	1	1	1	? x 10 Post Bolt (Post 2 of LET)		
3580G	6	6	6	? x 18 HGR Post Bolt (posts 3 thru 8) ○		
3360G	16	16	16	? x 1 ? HGR Splice Bolt		
3340G	25	27	31	? HGR Nut (16-spl, 7-posts)		
4228G	2	2	2	? x 4 Lag Screw		
3910G	2	2	2	1" Hex Nut (Anchor Cable)		
3900G	2	2	2	1" Washer (Anchor Cable)		
6018B	2	2	2	Right - Object Marker (12" x 12")		
6019B	2	2	2	Left - Object Marker (12" x 12")		
3700G	4	4	4	? Washer		
3704G	2	2	2	? Heavy Hex Nut		
3497G	0	2	6	? x 9 ?" Hex Hd (Top of Tubes 3-8)A307		



Texas Department of Transportation
Design Division (Roadway)

**SINGLE GUARDRAIL TERMINAL
(ET-2000 PLUS)
(WOOD POST)
SGT(7)-09**

FILE: sgl709.dgn	DN: MAM	CK: MAM	DW: BGD	CR: _____
© TxDOT APRIL 1997	DIST	FEDERAL AID PROJECT		SHEET
REVISIONS				
COUNTY		CONTROL	SECT	JOB
				HIGHWAY