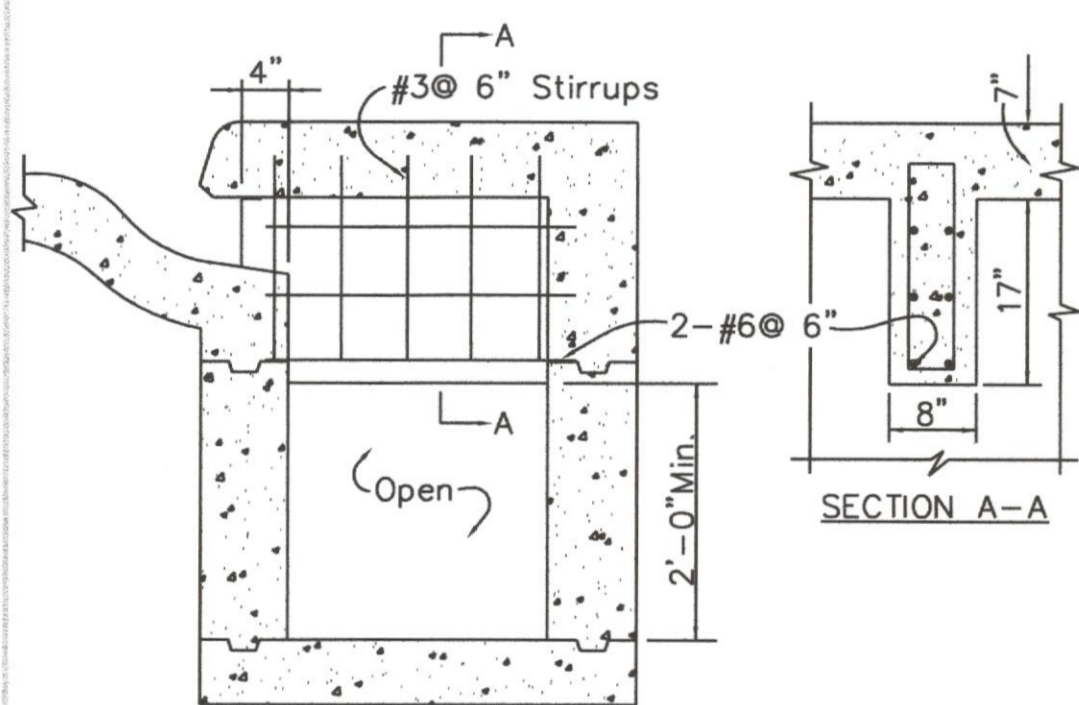
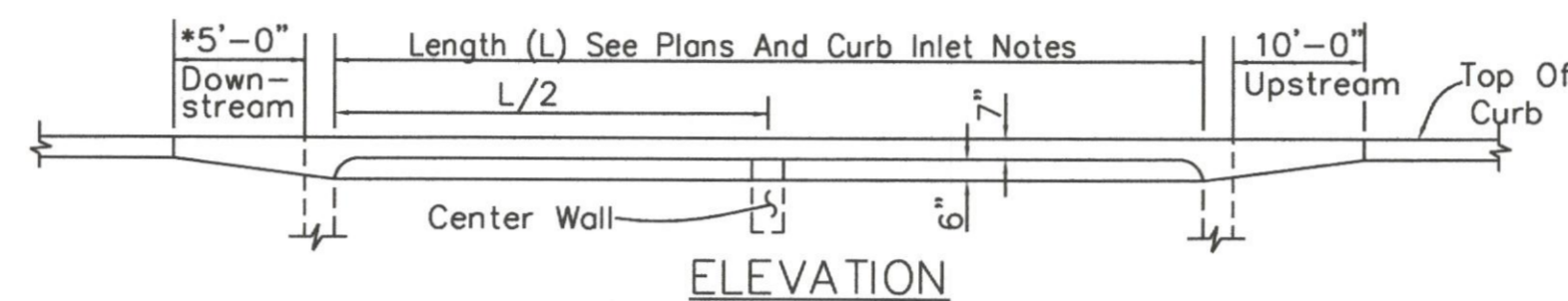
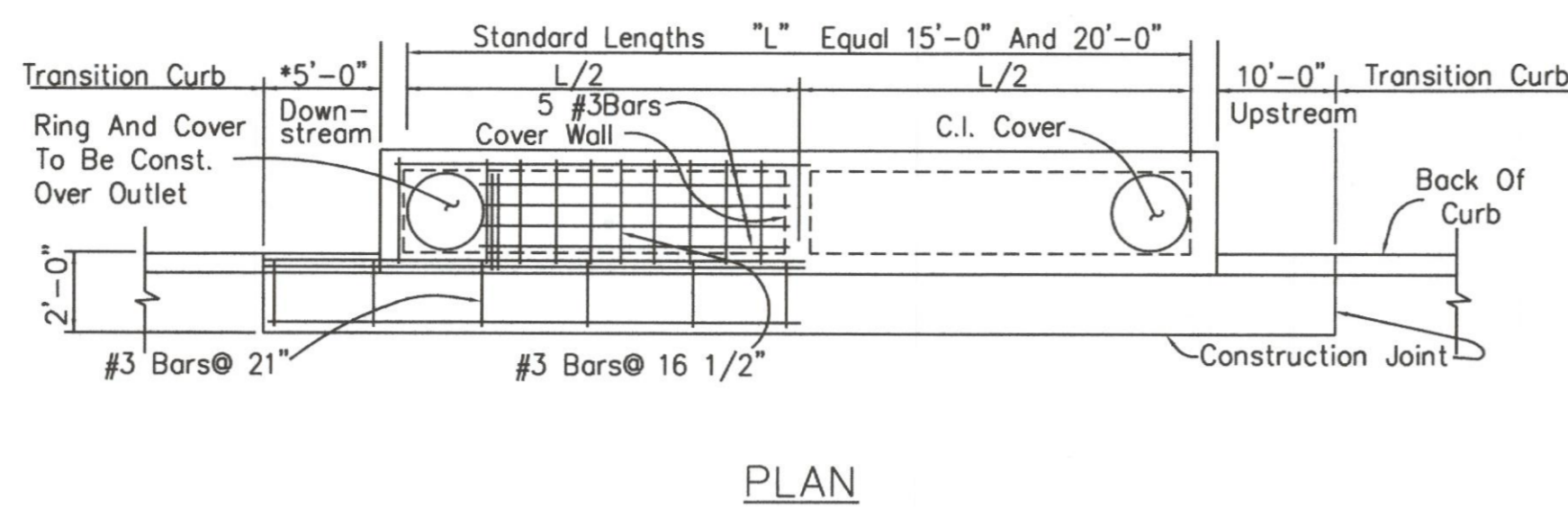


5' AND 10' CURB INLETS

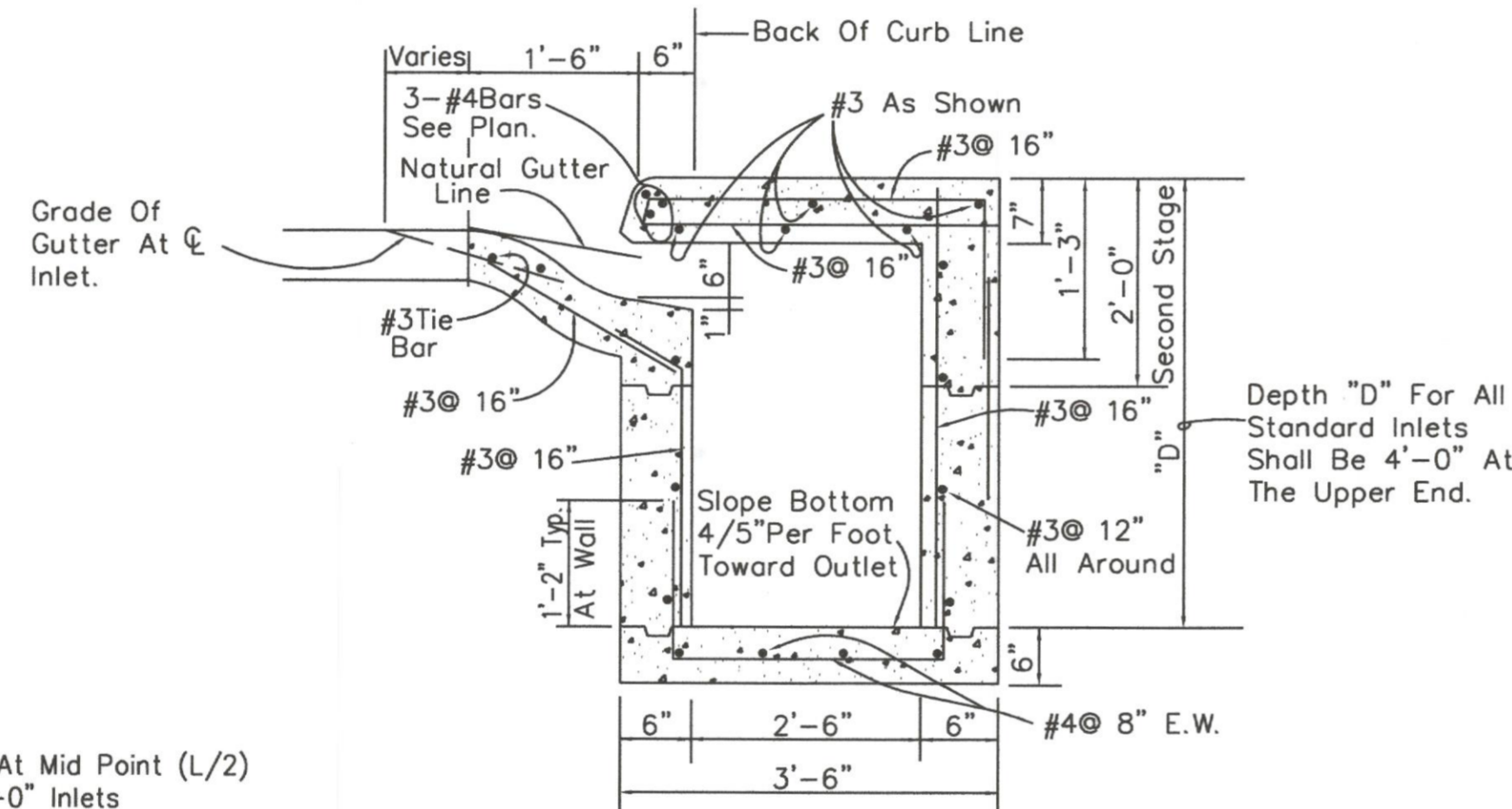


CENTER WALL REINFORCING
15' AND 20' CURB INLET
Not To Scale



15' AND 20' CURB INLETS
Not To Scale

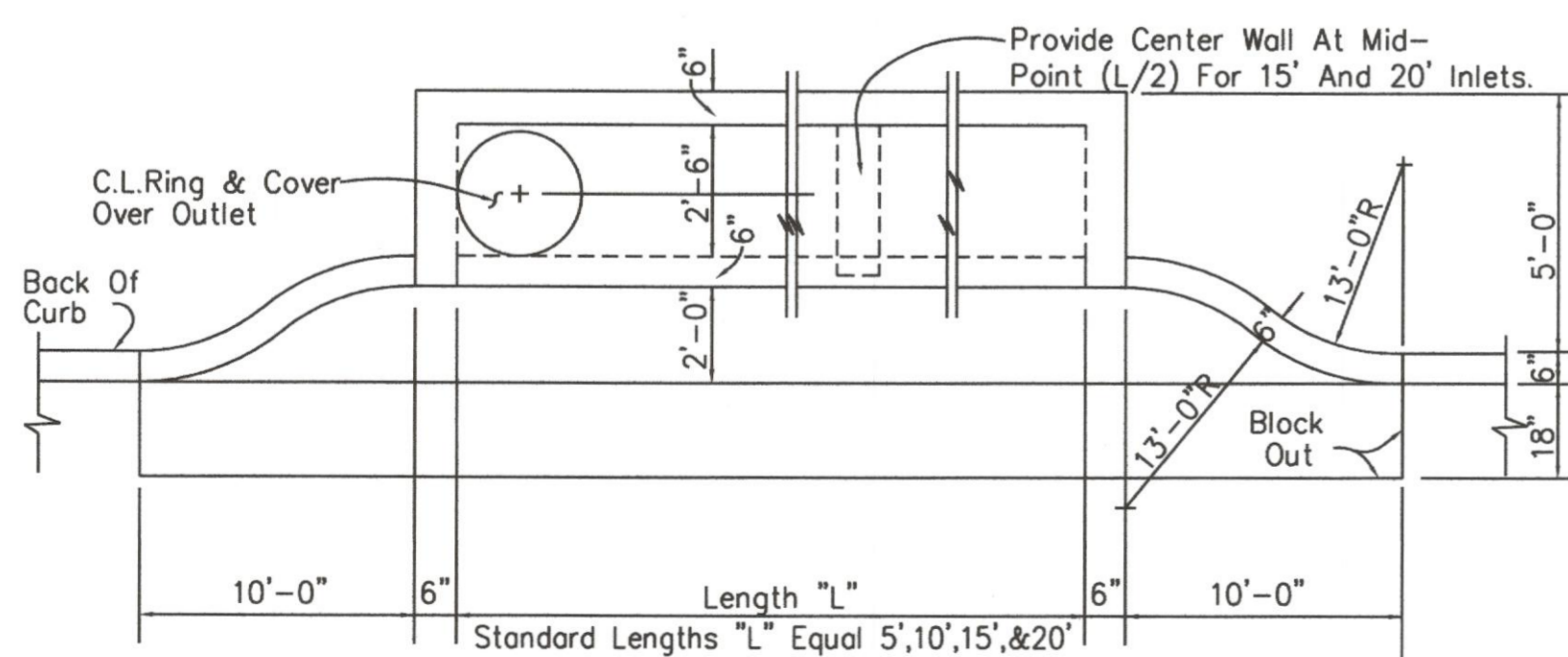
* When standard curb inlets are in a sag or low area both upstream and downstream curb transitions are to be a minimum of 10'-0".



SECTION

- CURB INLET NOTES**
1. Provide Center Wall At Mid Point (L/2) For 15'-0" And 20'-0" Inlets
 2. Provide Two Frames And Covers For 15'-0" And 20'-0" Inlets
 3. Provide Manhole Steps At Each Manhole

STANDARD CURB INLETS



RECESSED CURB INLET
Not To Scale

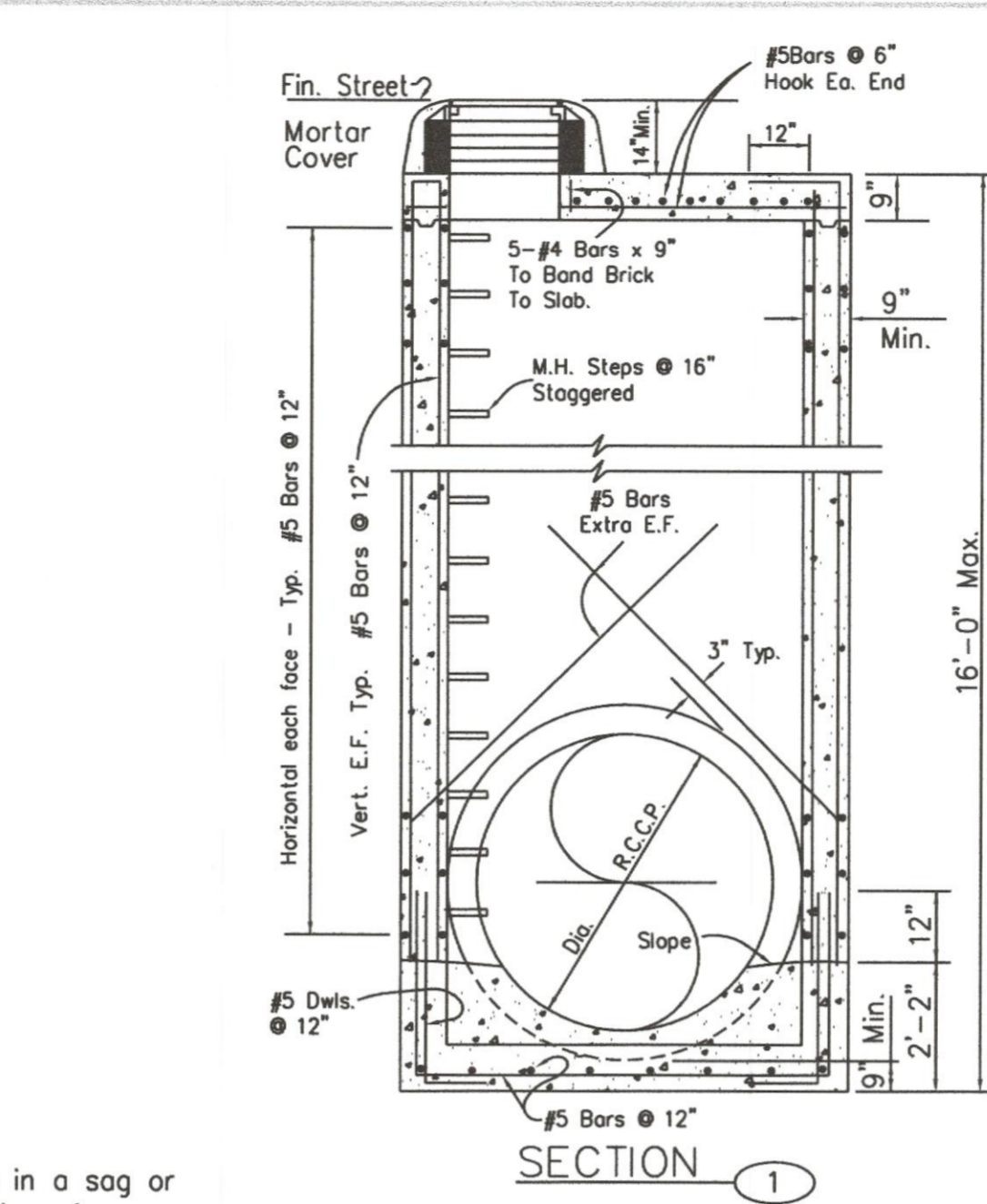
CRUSHED LIMESTONE, TYPE 1, EMBEDMENT: Crushed limestone shall consist of durable particles of crushed stone ranging in size from 3/4" to 1/4" with percent of wear not exceeding 35%. The gradation based on ASTM D448 size 67, use as follows:

Sieve Size	% By Weight Passing
1"	100
3/4"	90 - 100
3/8"	20 - 55
No. 4	0 - 10
No. 8	0 - 5

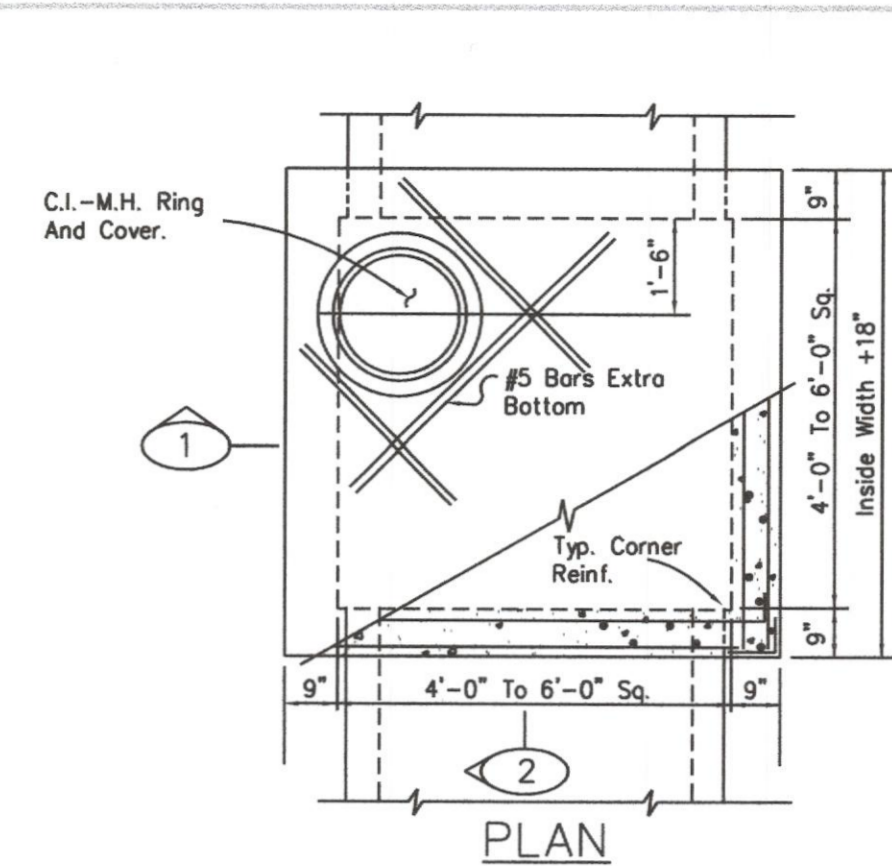
GRAVEL, TYPE 2, EMBEDMENT: Gravel for embedment and/or encasement shall be washed gravel ranging in size from 3/4-inch diameter to 1/4-inch diameter meeting the requirements of ASTM Designation C33, Gradation 67. The material shall be free from clay and organic material.

SELECT MATERIAL

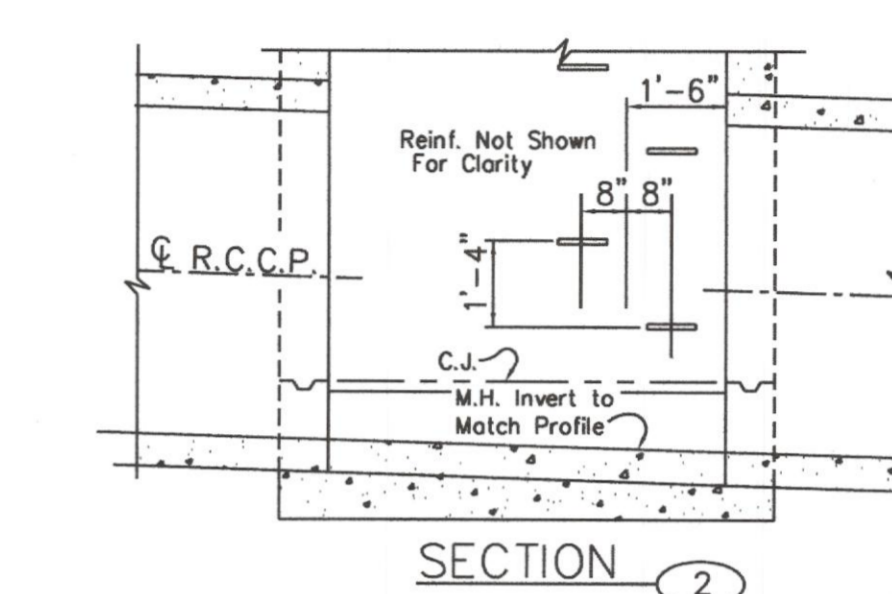
A non-expansive soil with sufficient permeability characteristics to allow rapid elimination of seepage water shall be used or shall have a plasticity index of 25 or less. (Non granular (sand) not allowed)



SECTION 1

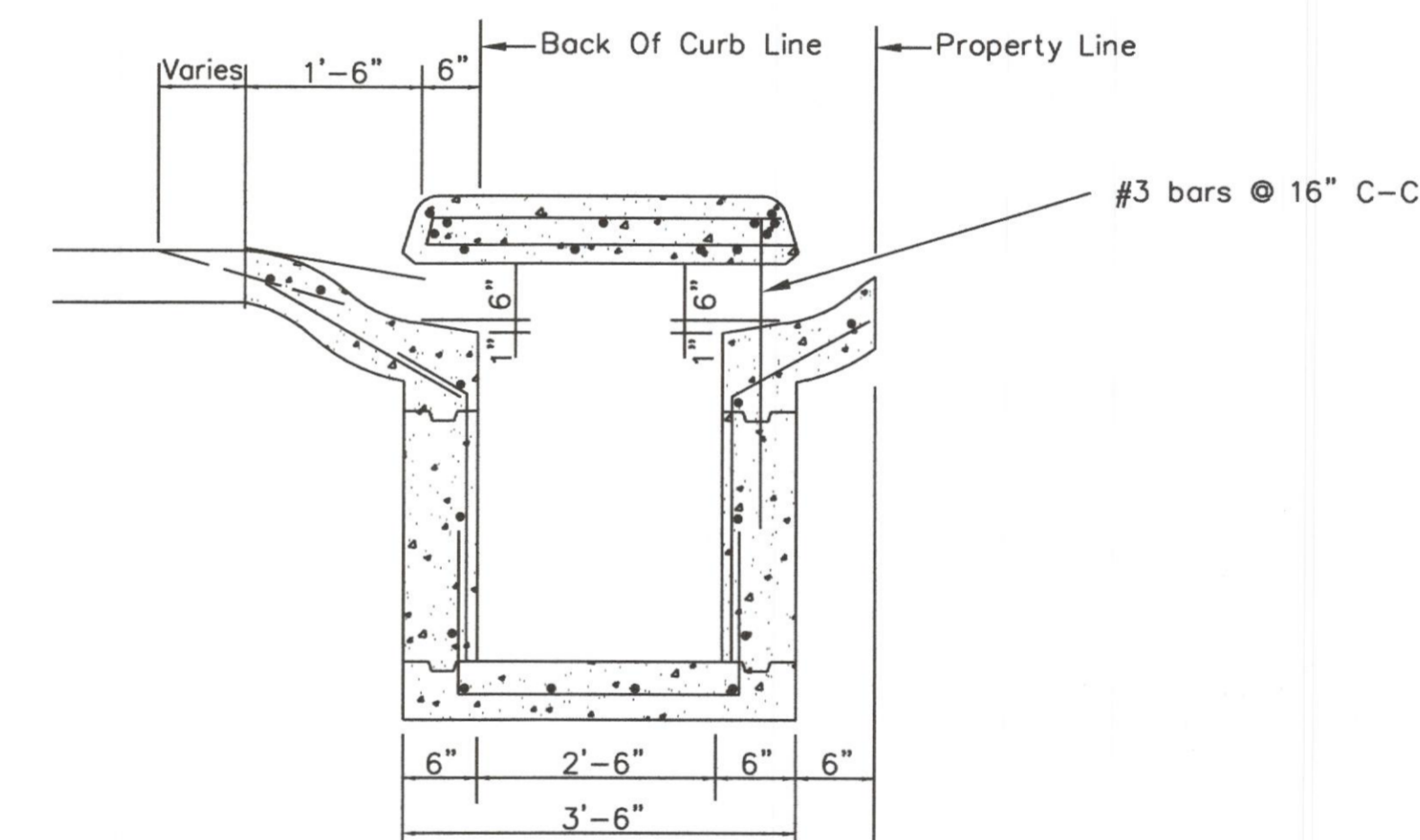


PLAN

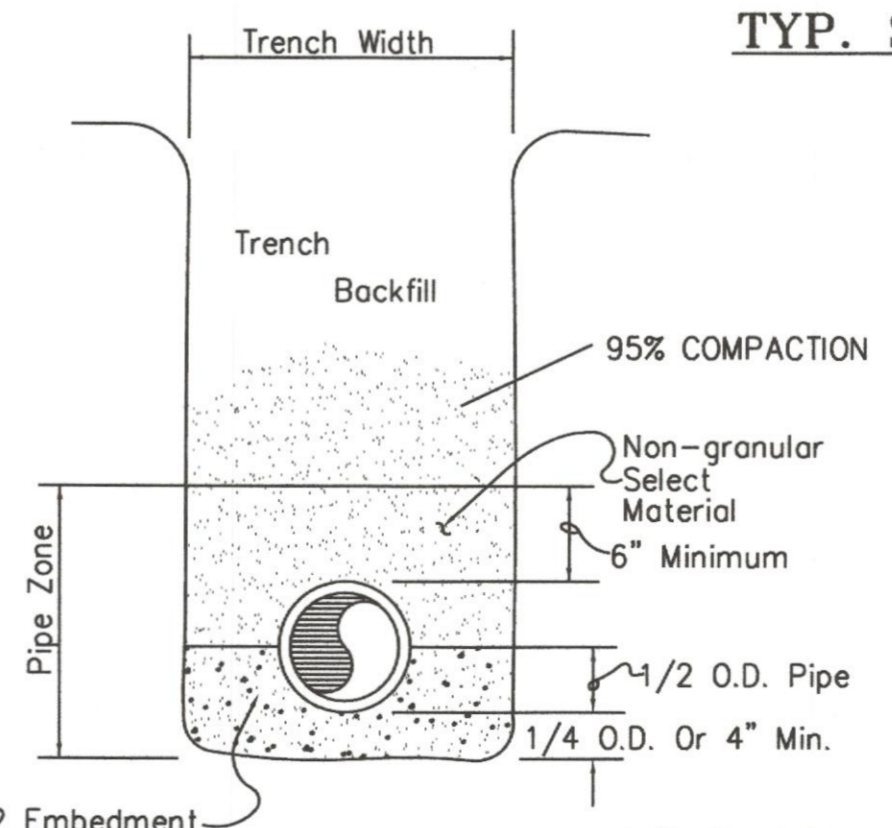


SECTION 2

4'-0" TO 6'-0" SQ. - STORM DRAIN M.H.
Not To Scale



TYP. SECTION FOR INLET WITH REAR OPENING



Storm Sewer Pipe Embedment Detail
Type 1 or 2 Embedment * No Sand Above Rock

CONCRETE FOR STRUCTURES TO BE 4200 PSI
NO FLY ASH ALLOWED IN STRUCTURES

GENERAL NOTES

1. PROVIDE A MINIMUM OF 2 INCHES CLEAR CONCRETE COVER ON REINFORCING FOR TOP SURFACE OF INLET AND MANHOLE COVERS.
2. PROVIDE A MINIMUM OF 1-1/2 INCHES OF CLEAR CONCRETE COVER ON REINFORCING FOR INLET AND MANHOLE WALLS AND BASES.
3. TRIM STEEL TO CLEAR PIPE AT OUTLET.



THE SEAL APPEARING ON THIS DOCUMENT WAS AUTHORIZED BY W.L. DOUPHRATE IN TEXAS P.E. NO. 80102 ON

DOUPHRATE & ASSOCIATES, INC.
SURVEYING - PROJECT MANAGEMENT - SURVEYING
2235 RIDGE RD., # 200 ROCKWALL, TEXAS 75087
PHONE: (972)771-9004 FAX: (972)771-9005

INLET DETAILS
PROPOSED CARRIER DRIVE
CITY OF ROCKWALL
ROCKWALL COUNTY, TEXAS

REVISION	CHECKED	DRAWN	DATE	DRAWING	PROJECT
	W.L.D.	R.C.T.	04/2010	DET	10004
					16 OF 23