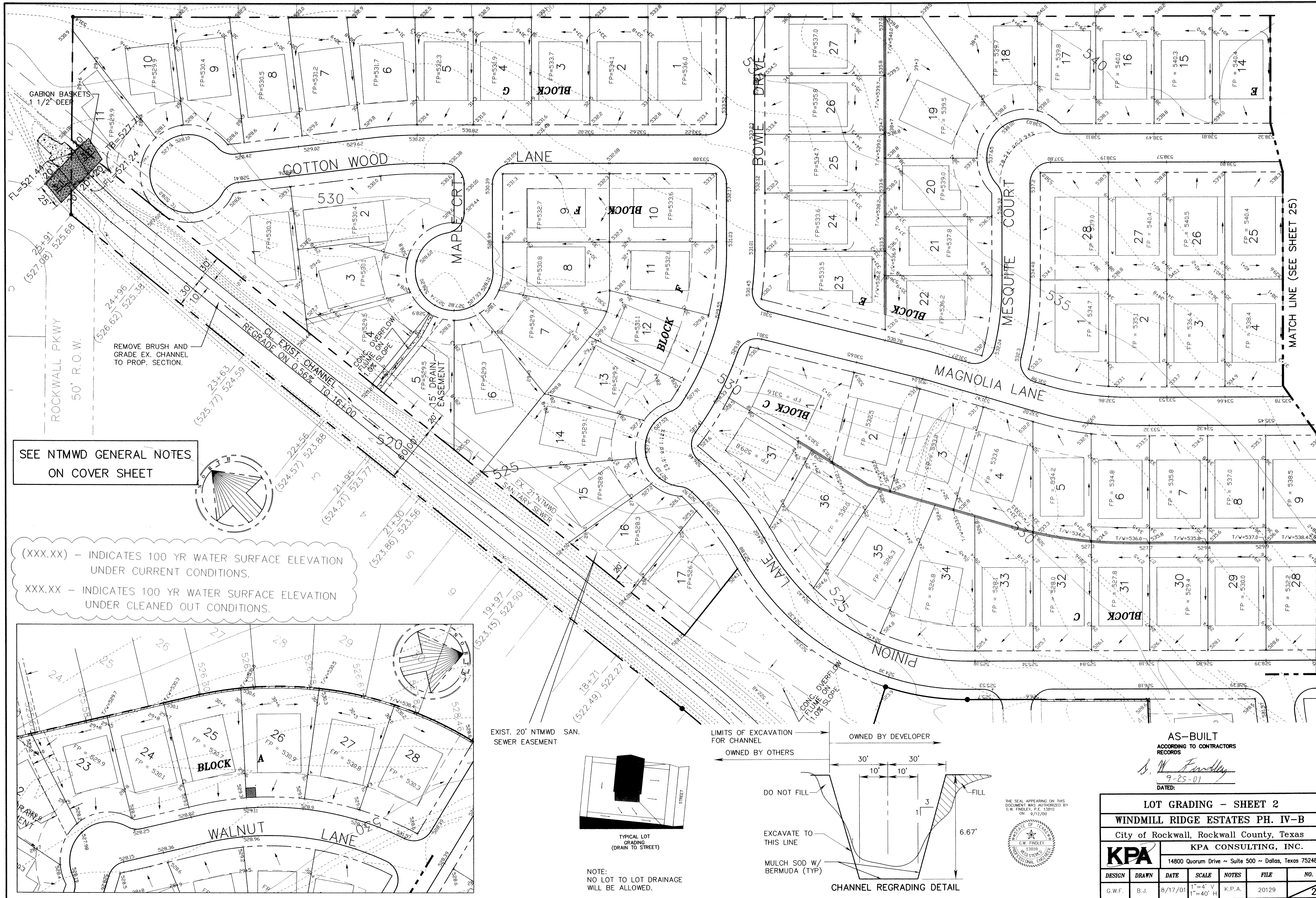
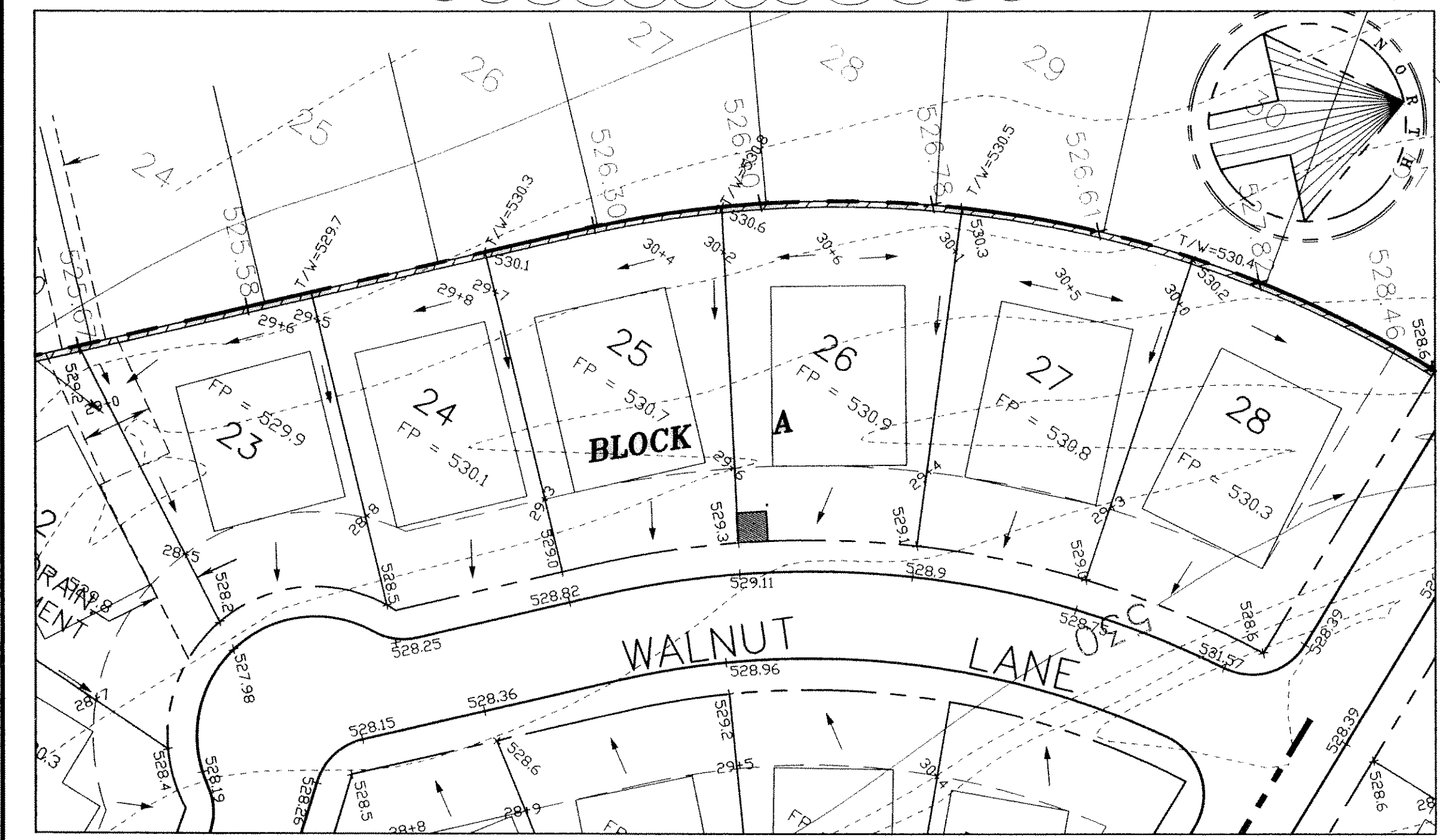


F:\dms202129\AS\BUIL\5\grading & drain\grading.dwg Tue Sep 25 14:56:19 2001 B. Johnson
 HP Designer: 1050 Hewlett-Packard HP-GL/2 devices, A01 4.3 (V4.5) - 19990922

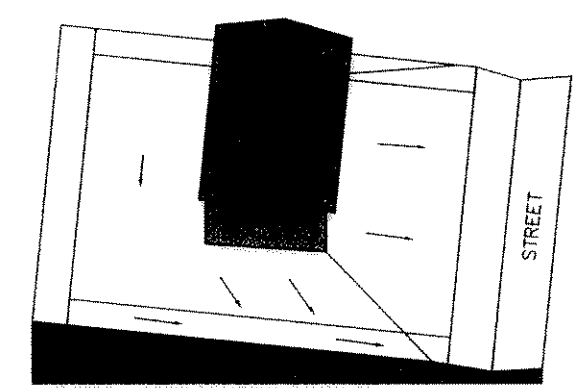


SEE NTMWD GENERAL NOTES
ON COVER SHEET

(XXX.XX) - INDICATES 100 YR WATER SURFACE ELEVATION
UNDER CURRENT CONDITIONS.
 XXX.XX - INDICATES 100 YR WATER SURFACE ELEVATION
UNDER CLEANED OUT CONDITIONS.

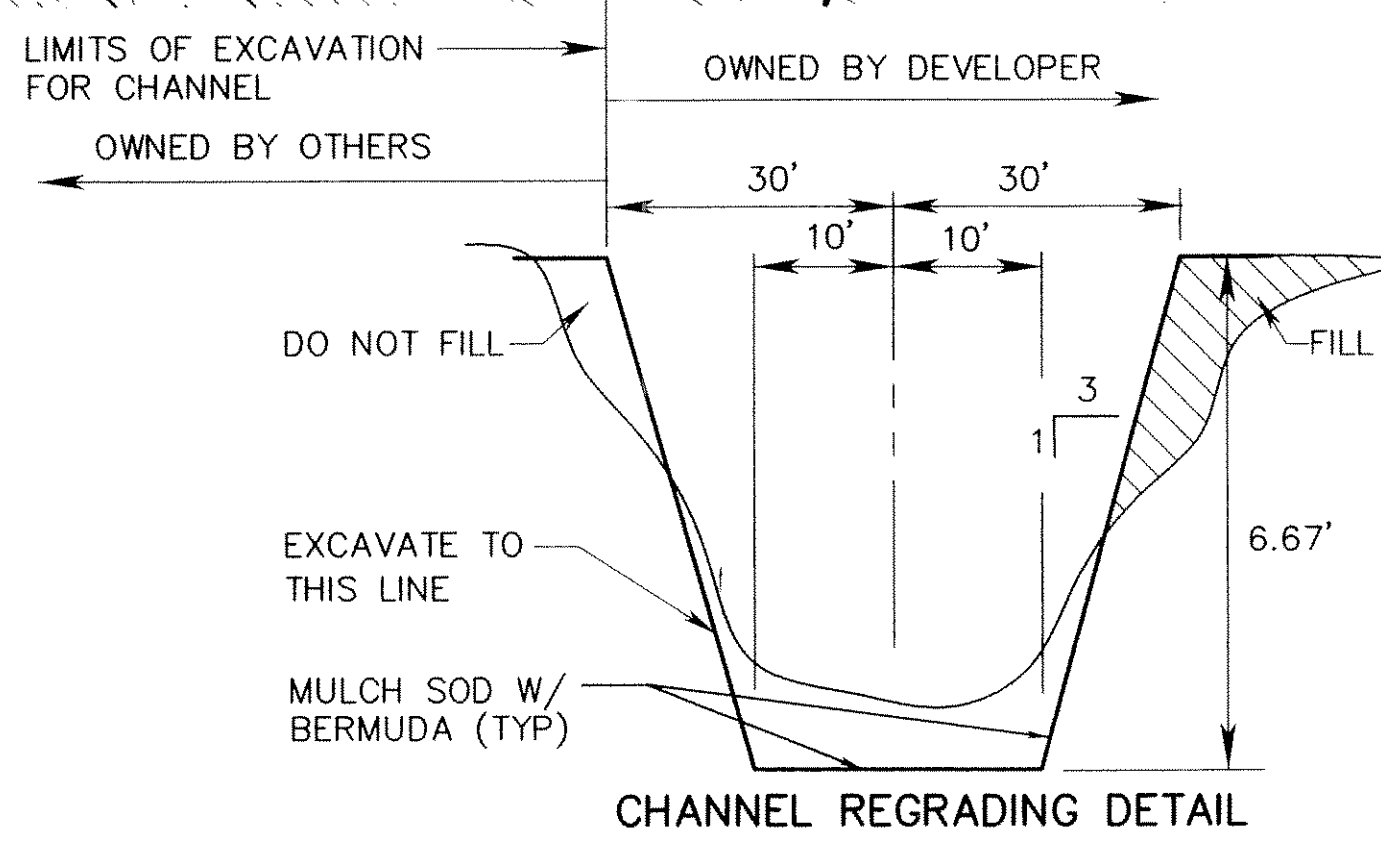


EXIST. 20' NTMWD SAN.
SEWER EASEMENT

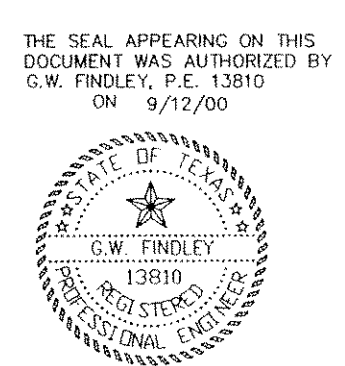


TYPICAL LOT
GRADING
(DRAIN TO STREET)

NOTE:
NO LOT TO LOT DRAINAGE
WILL BE ALLOWED.



CHANNEL REGRADING DETAIL



AS-BUILT
 ACCORDING TO CONTRACTORS
 RECORDS
S. W. Finley
 9-25-01
 DATED:

LOT GRADING - SHEET 2					
WINDMILL RIDGE ESTATES PH. IV-B					
City of Rockwall, Rockwall County, Texas					
KPA CONSULTING, INC.					
14800 Quorum Drive ~ Suite 500 ~ Dallas, Texas 75248					
DESIGN	DRAWN	DATE	SCALE	NOTES	FILE
G.W.F.	B.J.	8/17/01	1"=4' V 1"=40' H	K.P.A.	20129
					27

MATCH LINE (SEE SHEET 25)