

AS-BUILT
 ACCORDING TO CONTRACTORS
 RECORDS
A.W. Finkley
 9-25-01
 DATED:

SEE NTMWD GENERAL NOTES
 ON COVER SHEET

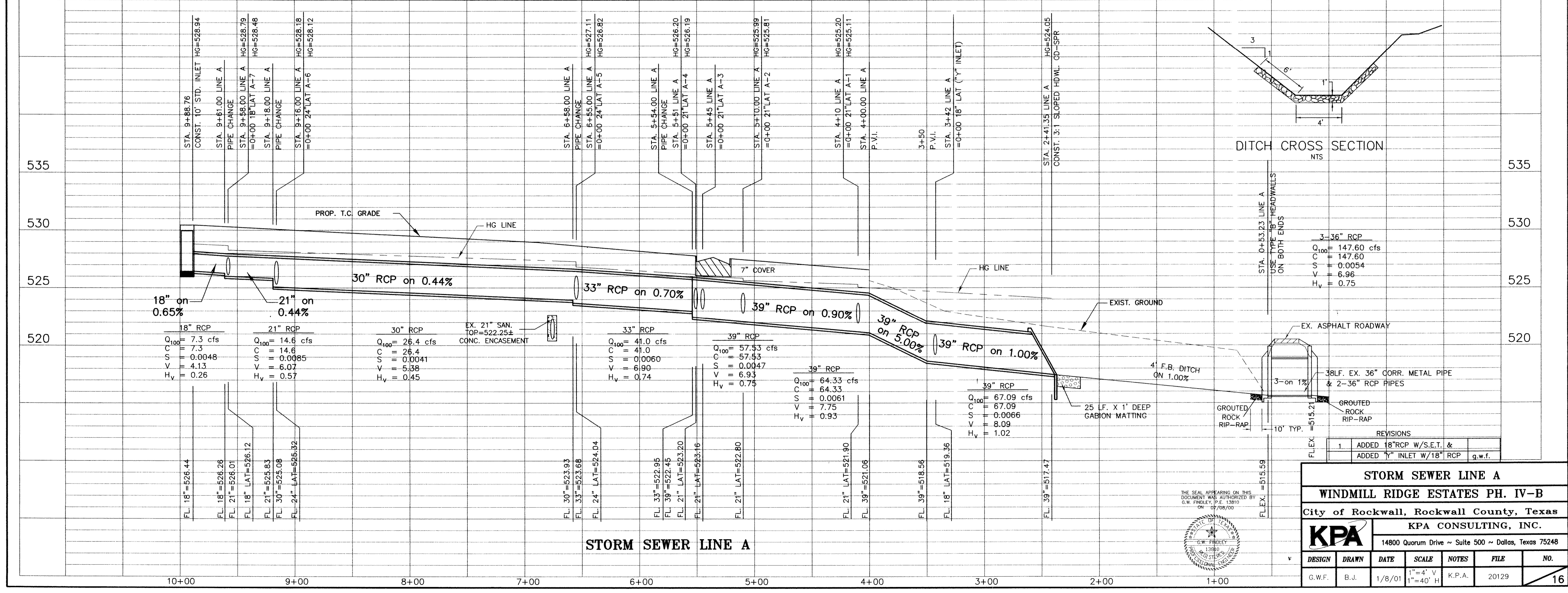
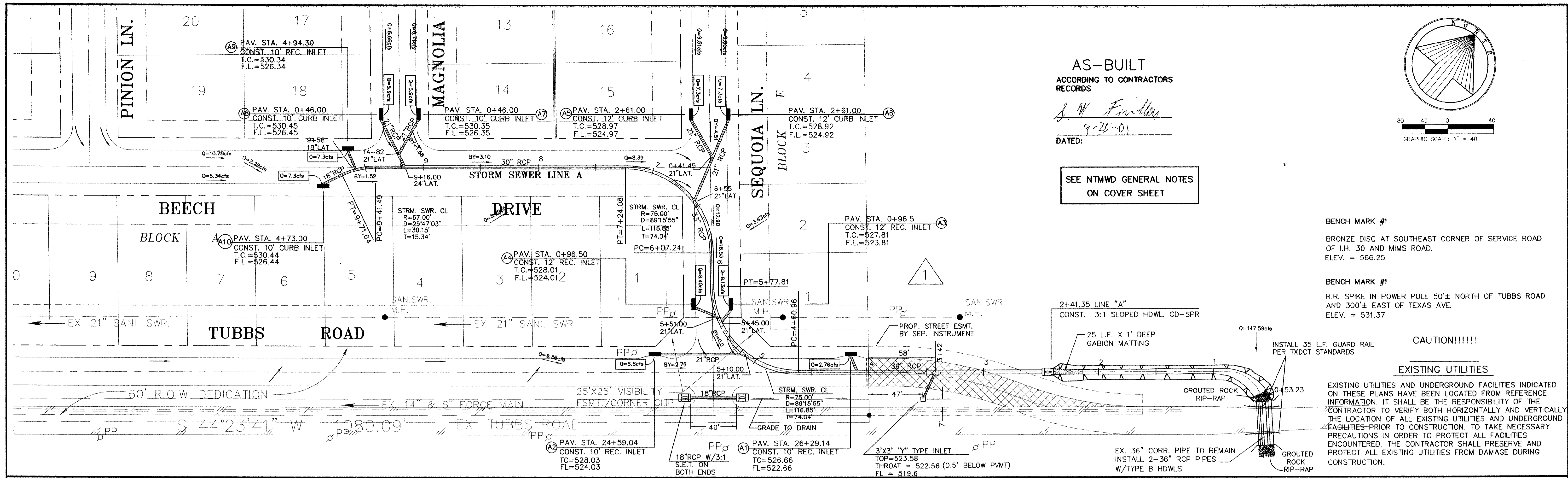
BENCH MARK #1
 BRONZE DISC AT SOUTHEAST CORNER OF SERVICE ROAD
 OF I.H. 30 AND MMS ROAD.
 ELEV. = 566.25

BENCH MARK #2
 R.R. SPIKE IN POWER POLE 50'± NORTH OF TUBBS ROAD
 AND 300'± EAST OF TEXAS AVE.
 ELEV. = 531.37

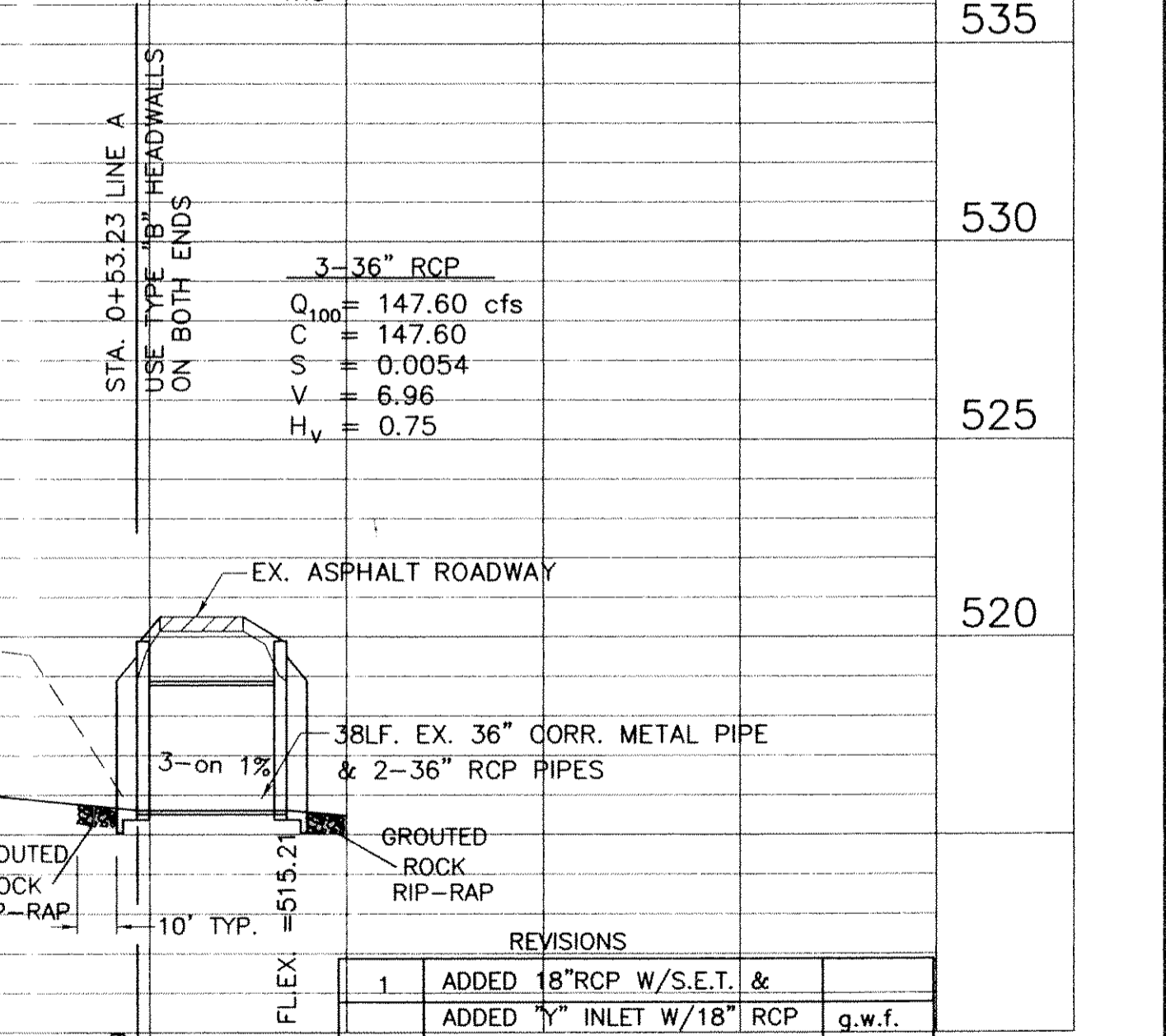
CAUTION!!!!

EXISTING UTILITIES

EXISTING UTILITIES AND UNDERGROUND FACILITIES INDICATED
 ON THESE PLANS HAVE BEEN LOCATED FROM REFERENCE
 INFORMATION. IT SHALL BE THE RESPONSIBILITY OF THE
 CONTRACTOR TO VERIFY BOTH HORIZONTALLY AND VERTICALLY
 THE LOCATION OF ALL EXISTING UTILITIES AND UNDERGROUND
 FACILITIES PRIOR TO CONSTRUCTION. TO TAKE NECESSARY
 PRECAUTIONS IN ORDER TO PROTECT ALL FACILITIES
 ENCOUNTERED. THE CONTRACTOR SHALL PRESERVE AND
 PROTECT ALL EXISTING UTILITIES FROM DAMAGE DURING
 CONSTRUCTION.



DITCH CROSS SECTION



REVISIONS

NO.	DESCRIPTION	DATE
1	ADDED 18" RCP W/S.E.T. & 41' F.B. DITCH ON 1.00% SLOPE	9/25/01
2	ADDED 39" INLET W/18" RCP	9/25/01

STORM SEWER LINE A
WINDMILL RIDGE ESTATES PH. IV-B
 City of Rockwall, Rockwall County, Texas

KPA CONSULTING, INC.
 14800 Quorum Drive ~ Suite 500 ~ Dallas, Texas 75248

DESIGN	DRAWN	DATE	SCALE	NOTES	FILE	NO.
G.W.F.	B.J.	1/8/01	1"=4' V 1"=40' H	K.P.A.	20129	16

F:\dwgs\2012\AS-BUILT\120_storm_a.dwg Tue Sep 25 14:08:50 2001 B. Johnson
 HP Designer: 1050C Hewlett-Packard HP-G/L/2 devices, ADI 4.3 (V4.3) - 1999/09/22