

SEE NTMWD GENERAL NOTES ON COVER SHEET

HIGH POINT ELEV = 538.77
 HIGH POINT STA = 9+21.83
 PVI STA = 9+00
 PVI ELEV = 539.00
 M = -0.285

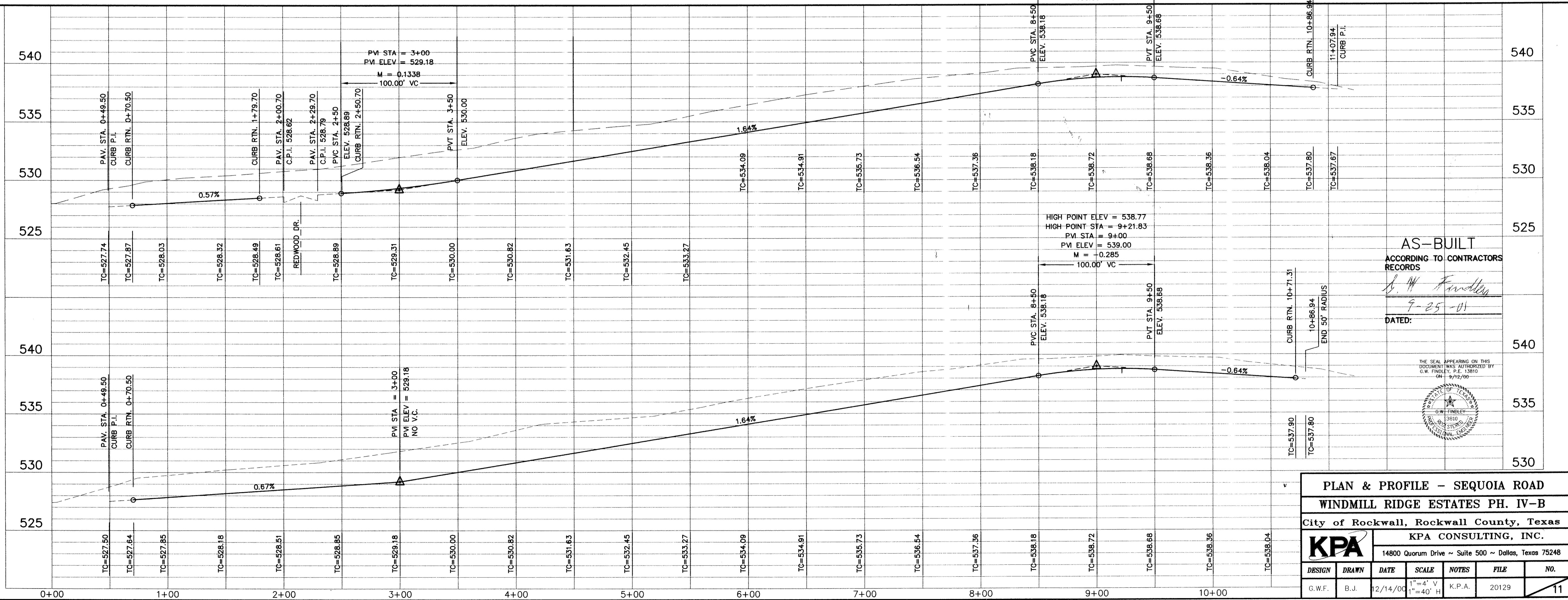
BENCH MARK #1
 BRONZE DISC AT SOUTHEAST CORNER OF SERVICE ROAD OF I.H. 30 AND MIMS ROAD.
 ELEV. = 566.25

BENCH MARK #1
 R.R. SPIKE IN POWER POLE 50'± NORTH OF TUBBS ROAD AND 300'± EAST OF TEXAS AVE.
 ELEV. = 531.37

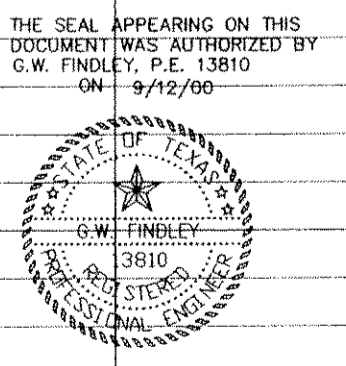
CAUTION!!!!!!
 EXISTING UTILITIES

EXISTING UTILITIES AND UNDERGROUND FACILITIES INDICATED ON THESE PLANS HAVE BEEN LOCATED FROM REFERENCE INFORMATION. IT SHALL BE THE RESPONSIBILITY OF THE CONTRACTOR TO VERIFY BOTH HORIZONTALLY AND VERTICALLY THE LOCATION OF ALL EXISTING UTILITIES AND UNDERGROUND FACILITIES PRIOR TO CONSTRUCTION. TO TAKE NECESSARY PRECAUTIONS IN ORDER TO PROTECT ALL FACILITIES ENCOUNTERED. THE CONTRACTOR SHALL PRESERVE AND PROTECT ALL EXISTING UTILITIES FROM DAMAGE DURING CONSTRUCTION.

NOTE:
 CONSTRUCT BARRIER FREE RAMPS AT ALL INTERSECTIONS AS PER CITY STANDARDS.



AS-BUILT
 ACCORDING TO CONTRACTORS RECORDS
 DATED: 9-25-01



PLAN & PROFILE - SEQUOIA ROAD	
WINDMILL RIDGE ESTATES PH. IV-B	
City of Rockwall, Rockwall County, Texas	
KPA CONSULTING, INC.	
14800 Quorum Drive ~ Suite 500 ~ Dallas, Texas 75248	
DESIGN	NO.
G.W.F.	20129
DRAWN	FILE
B.J.	20129
DATE	SCALE
12/14/00	1"=4' V 1"=40' H
NOTES	NO.
K.P.A.	11