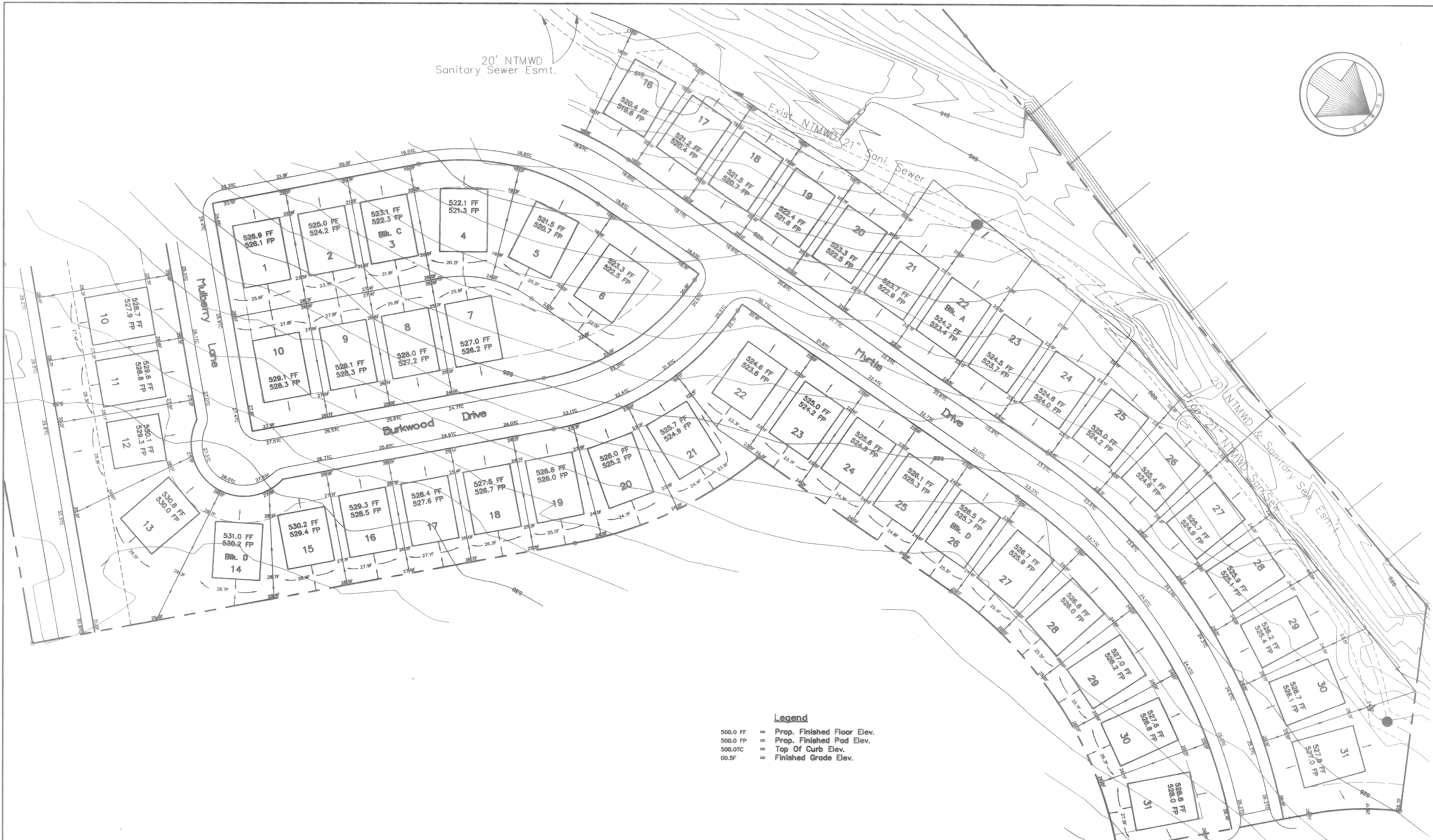


20' NTMWD
Sanitary Sewer Esmt.



- Legend**
- 500.0 FF = Prop. Finished Floor Elev.
 - 500.0 FP = Prop. Finished Pad Elev.
 - 500.0TC = Top Of Curb Elev.
 - 00.5F = Finished Grade Elev.

Bench Mark 1
Bronze disc at Southeast corner of service road
of I.H. 30 & Mims Road Elev.=566.25
Bench Mark 2
R.R. spike in power pole 50' North Of Tubbs
Road & 300' East Of Texas Ave. Elev.=531.37

LOT GRADING PLANS						
WINDMILL RIDGE ESTATES NO. 4						
City Of Rockwall, Texas						
TIPTON ENGINEERING, INC.						
6330 Belt Line Rd. ~ Suite C ~ Garland, Texas 75043						
DESIGN	DRAWN	DATE	SCALE	NOTES	FILE	NO.
T.E. Inc.	T.E. Inc.	9-96	1"=40'		4086	19