

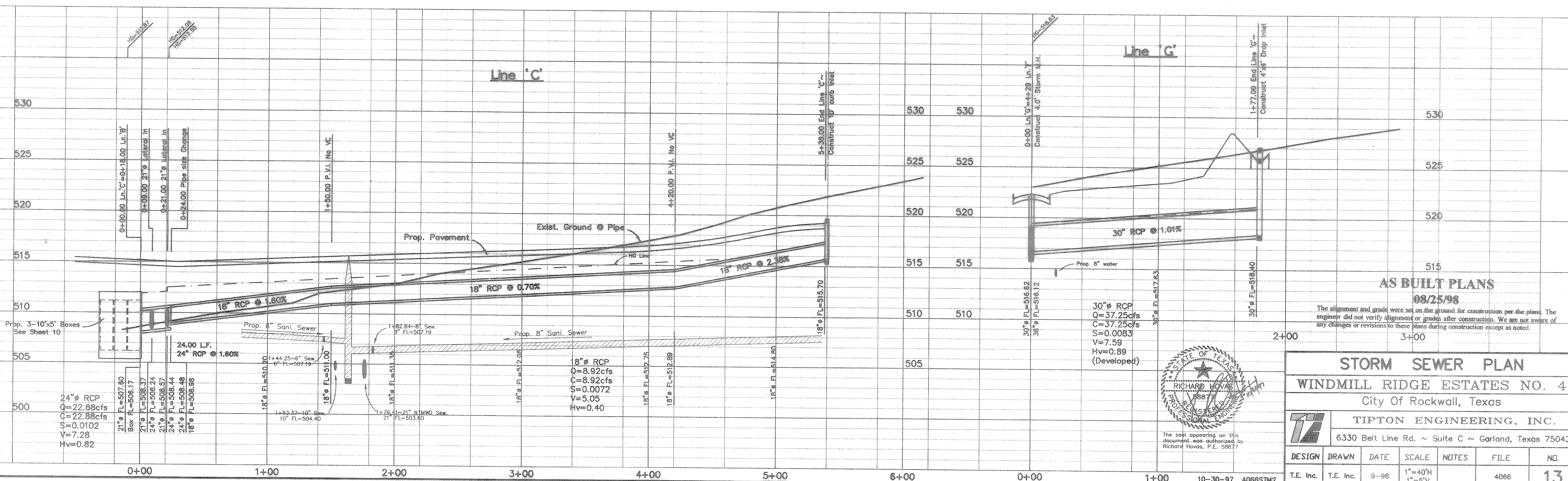
Note!
 "The contractor shall contact Mr. Joe Stankiewicz, Engineering Officer, at (972) 442-5405, at least 48 hours prior to performing any work in the vicinity of NTMWD facilities."

CAUTION !!!
 EXISTING UTILITIES

EXISTING UTILITIES AND UNDERGROUND FACILITIES INDICATED ON THESE PLANS HAVE BEEN LOCATED FROM REFERENCE INFORMATION. IT SHALL BE THE RESPONSIBILITY OF THE CONTRACTOR TO VERIFY BOTH HORIZONTALLY AND VERTICALLY THE LOCATION OF ALL EXISTING UTILITIES AND UNDERGROUND FACILITIES PRIOR TO CONSTRUCTION, TO TAKE NECESSARY PRECAUTIONS IN ORDER TO PROTECT ALL FACILITIES ENCOUNTERED. THE CONTRACTOR SHALL PRESERVE AND PROTECT ALL EXISTING UTILITIES FROM DAMAGE DURING CONSTRUCTION.

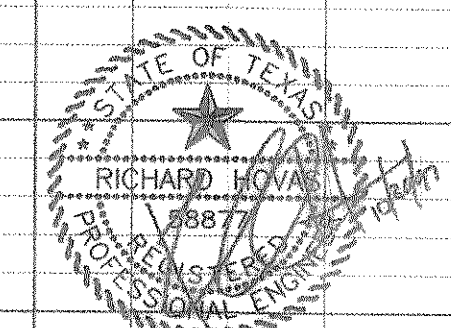
Bench Mark 1
 Bronze disc at Southeast corner of service road of I.H. 30 & Mills Road Elev.=566.25
 Bench Mark 2
 R.R. spike in power pole 50'± North Of Tubbs Road & 300'± East Of Texas Ave. Elev.=531.37

Note! See Sheet 12 For Plan View Of Line 'C'



AS BUILT PLANS
 08/25/98

The alignment and grade were set on the ground for construction per the plans. The engineer did not verify alignment or grades after construction. We are not aware of any changes or revisions to these plans during construction except as noted.



STORM SEWER PLAN						
WINDMILL RIDGE ESTATES NO. 4						
City Of Rockwall, Texas						
TIPTON ENGINEERING, INC.						
6330 Belt Line Rd. ~ Suite C ~ Garland, Texas 75043						
DESIGN	DRAWN	DATE	SCALE	NOTES	FILE	NO.
T.E. Inc.	T.E. Inc.	9-96	1"=40'H 1"=5'V		4086	13