

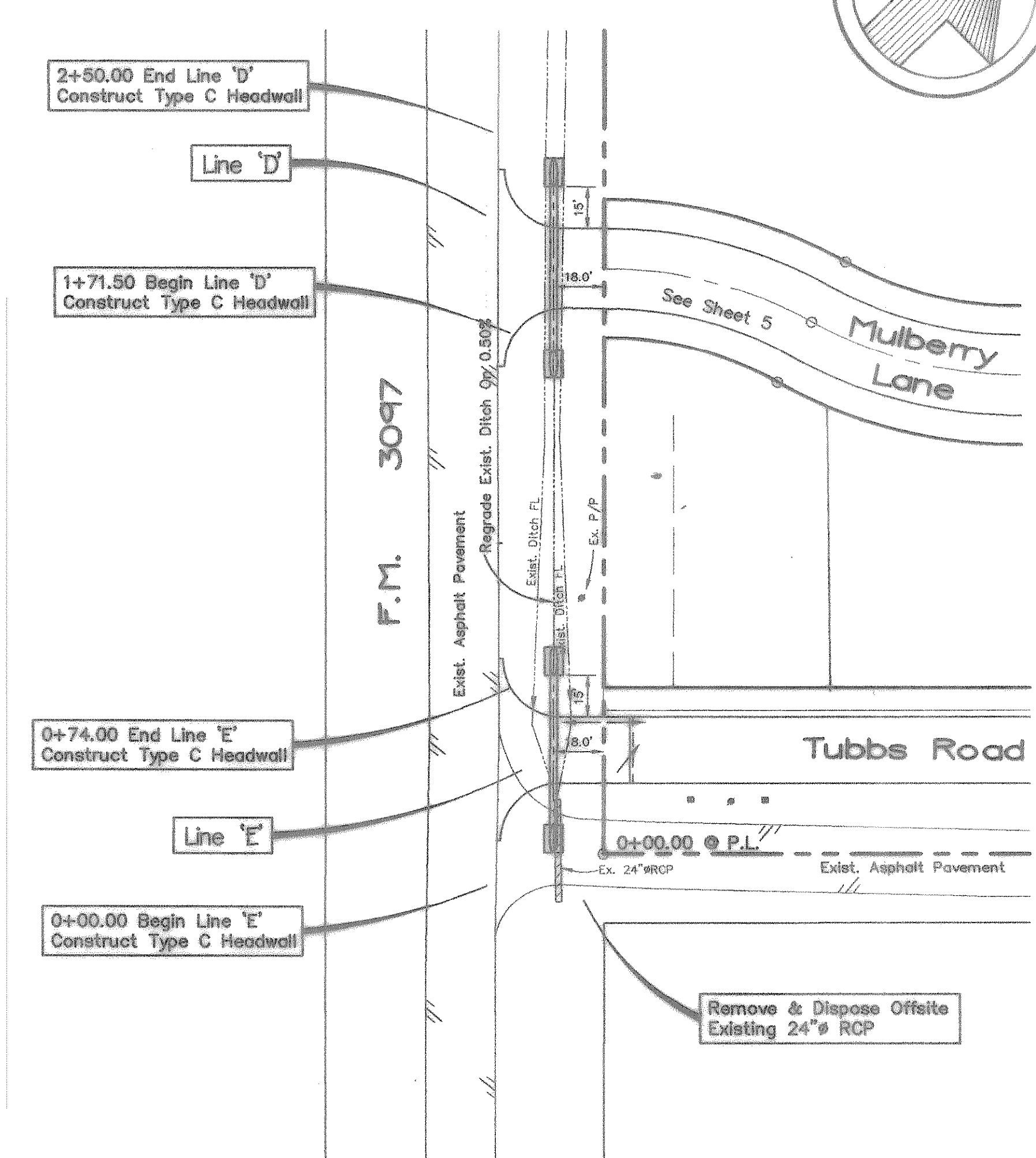
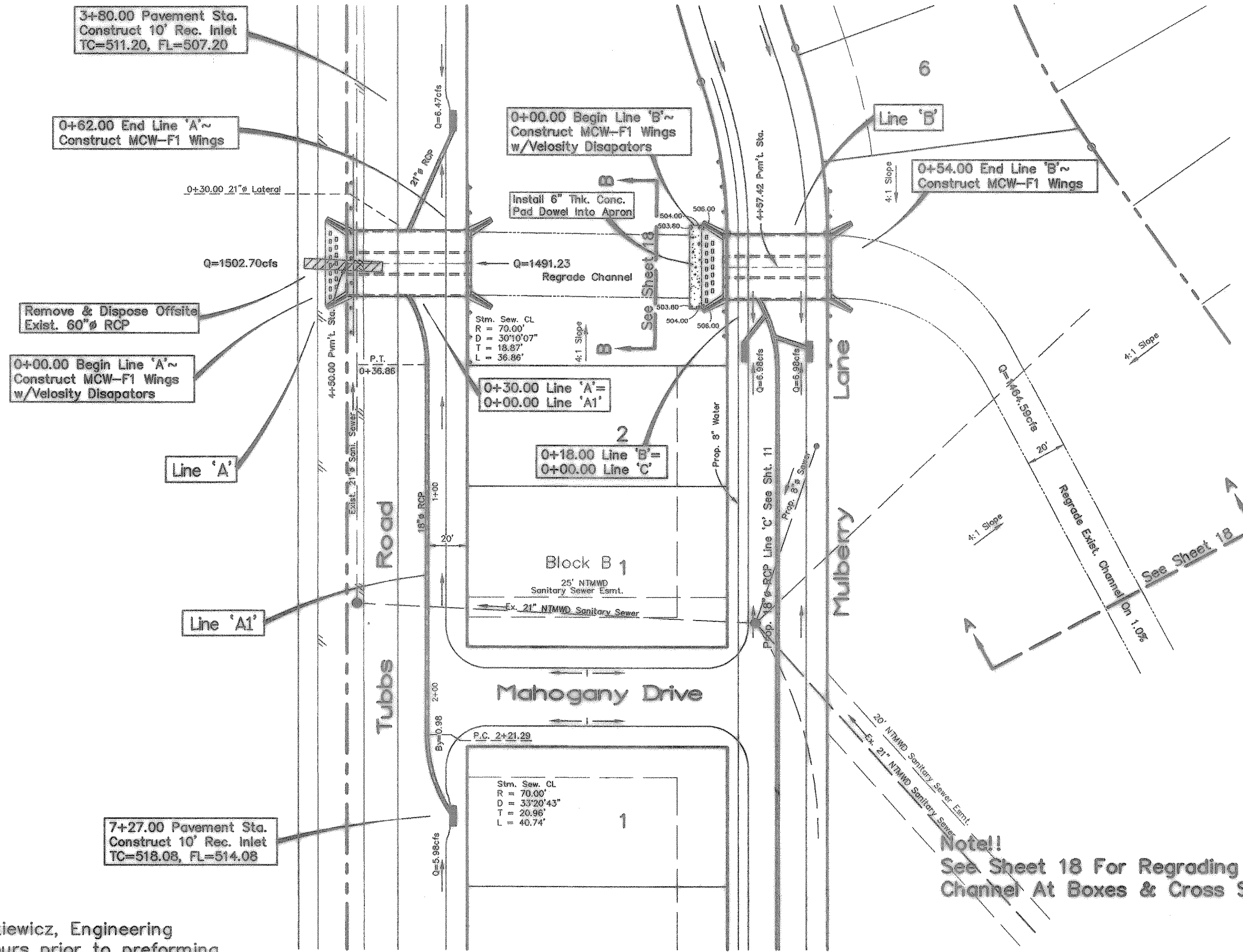
Typical Velocity Dissipator Detail
Not To Scale

CAUTION !!!
EXISTING UTILITIES

EXISTING UTILITIES AND UNDERGROUND FACILITIES INDICATED ON THESE PLANS HAVE BEEN LOCATED FROM REFERENCE INFORMATION. IT SHALL BE THE RESPONSIBILITY OF THE CONTRACTOR TO VERIFY BOTH HORIZONTALLY AND VERTICALLY THE LOCATION OF ALL EXISTING UTILITIES AND UNDERGROUND FACILITIES PRIOR TO CONSTRUCTION, TO TAKE NECESSARY PRECAUTIONS IN ORDER TO PROTECT ALL FACILITIES ENCOUNTERED. THE CONTRACTOR SHALL PRESERVE AND PROTECT ALL EXISTING UTILITIES FROM DAMAGE DURING CONSTRUCTION.

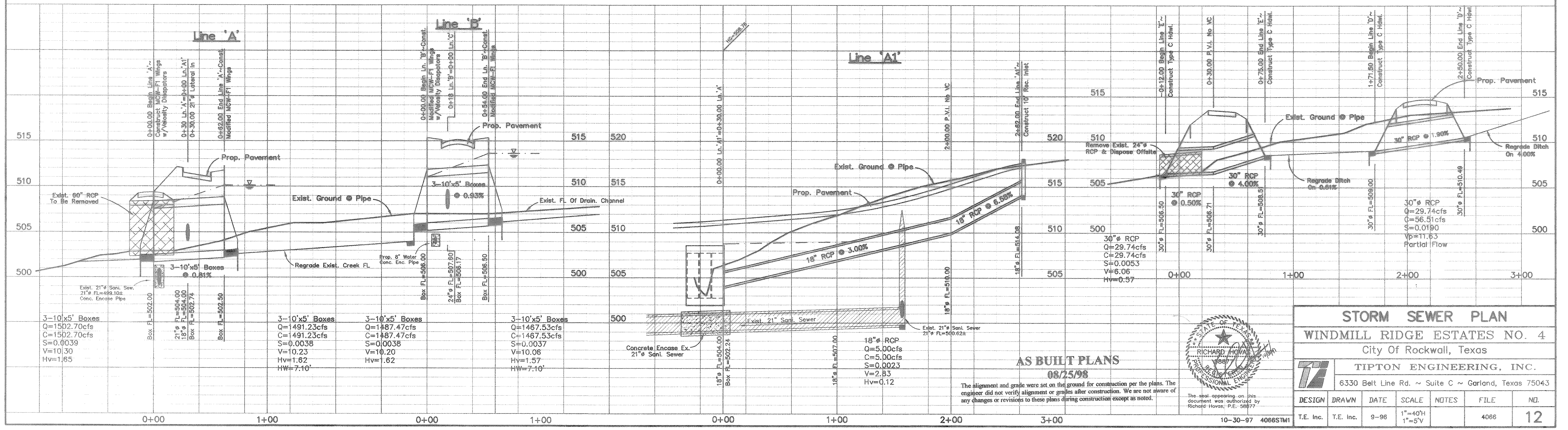
Note!!

"The contractor shall contact Mr. Joe Stankiewicz, Engineering Officer, at (972) 442-5405, at least 48 hours prior to performing any work in the vicinity of NTMWD facilities."



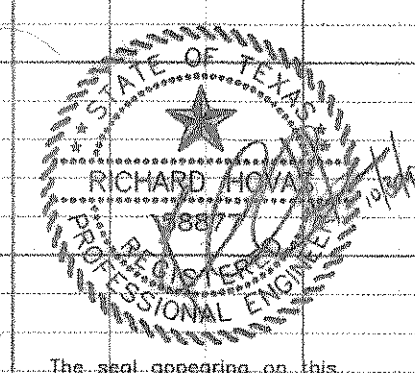
Note!
See Sheet 18 For Regrading Of Channel At Boxes & Cross Sections

Bench Mark 1
Brass disc at Southeast corner of service road of I.H. 30 & Nims Road Elev.=566.25
Bench Mark 2
R.R. spike in power pole 50'± North Of Tubbs Road & 300'± East Of Texas Ave. Elev.=531.37



AS BUILT PLANS
08/25/98

The alignment and grade were set on the ground for construction per the plans. The engineer did not verify alignment or grades after construction. We are not aware of any changes or revisions to these plans during construction except as noted.



STORM SEWER PLAN					
WINDMILL RIDGE ESTATES NO. 4					
City Of Rockwall, Texas					
TIPTON ENGINEERING, INC.					
6330 Belt Line Rd. ~ Suite C ~ Garland, Texas 75043					
DESIGN	DRAWN	DATE	SCALE	NOTES	FILE
T.E. Inc.	T.E. Inc.	9-98	1\"/>		