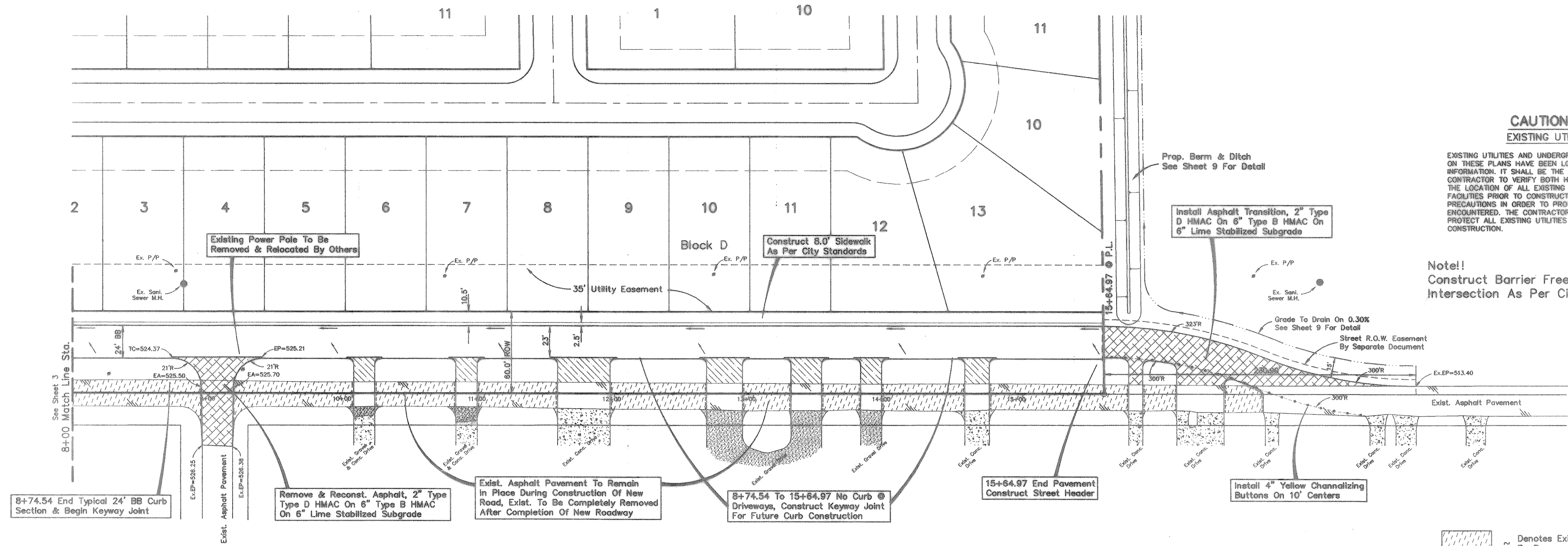


CAUTION !!!
EXISTING UTILITIES

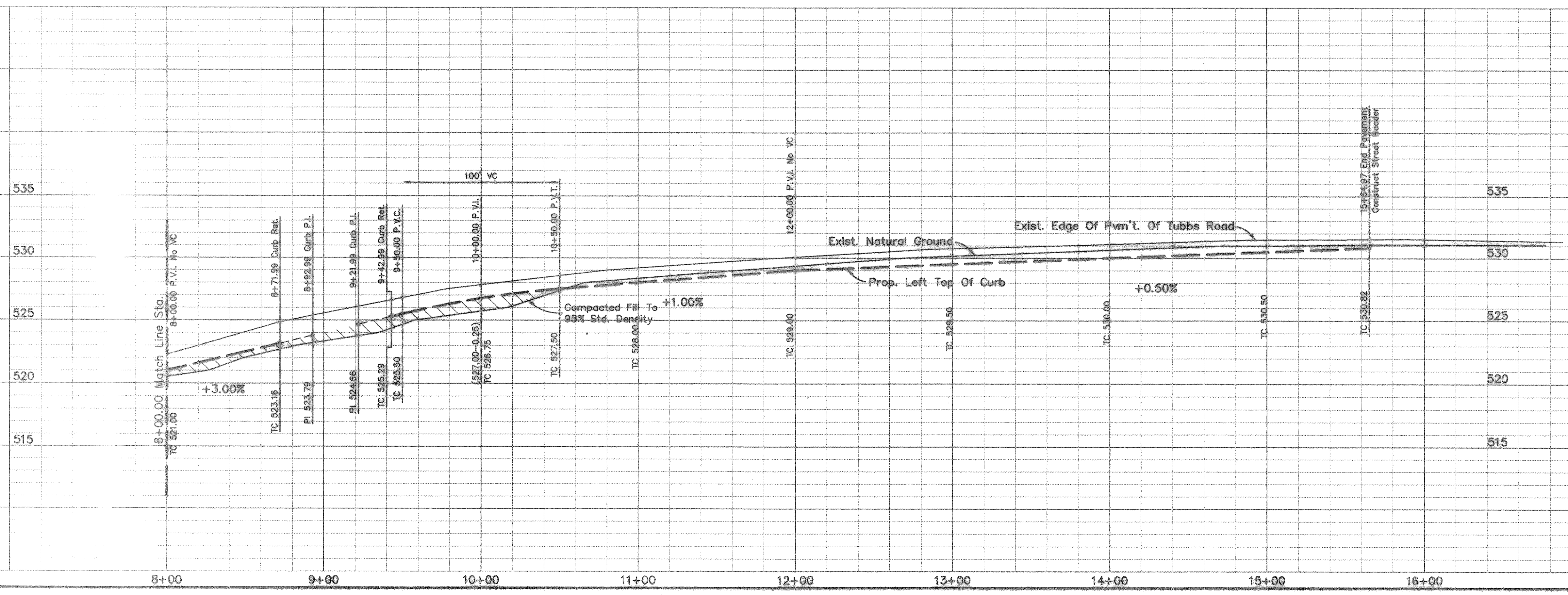
EXISTING UTILITIES AND UNDERGROUND FACILITIES INDICATED ON THESE PLANS HAVE BEEN LOCATED FROM REFERENCE INFORMATION. IT SHALL BE THE RESPONSIBILITY OF THE CONTRACTOR TO VERIFY BOTH HORIZONTALLY AND VERTICALLY THE LOCATION OF ALL EXISTING UTILITIES AND UNDERGROUND FACILITIES PRIOR TO CONSTRUCTION, TO TAKE NECESSARY PRECAUTIONS IN ORDER TO PROTECT ALL FACILITIES ENCOUNTERED. THE CONTRACTOR SHALL PRESERVE AND PROTECT ALL EXISTING UTILITIES FROM DAMAGE DURING CONSTRUCTION.

Note!!
Construct Barrier Free Ramps At All Intersection As Per City Standards.



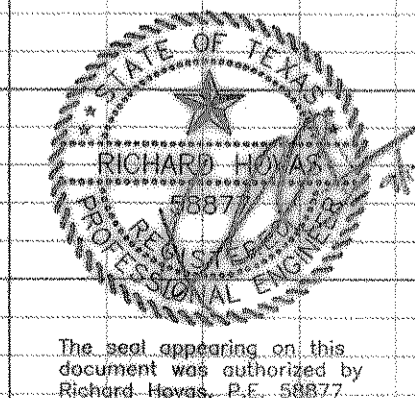
- ~ Denotes Exist. Asphalt Pavement To Be Removed After New Road Completion
- ~ Denotes Proposed Concrete Drives w/5'R's Connect To Exist., Match Grade Of Exist. Asphalt Pavement.

Bench Mark 1
Bronze disc at Southeast corner of service road of 1st. 130 & Minns Road Elev.=366.23
Bench Mark 2
R.R. spike in power pole 50' North Of Tubbs Road & 300' East Of Texas Ave. Elev.=531.37



AS BUILT PLANS
08/25/98

The alignment and grade were set on the ground for construction per the plans. The engineer did not verify alignment or grades after construction. We are not aware of any changes or revisions to these plans during construction except as noted.



PAVING PLAN						
WINDMILL RIDGE ESTATES NO. 4						
City Of Rockwall, Texas						
TIPTON ENGINEERING, INC.						
6330 Belt Line Rd. ~ Suite C ~ Garland, Texas 75043						
DESIGN	DRAWN	DATE	SCALE	NOTES	FILE	NO.
T.E. Inc.	T.E. Inc.	9-98	1"=40'H 1"=5'V		4086	6