

Typical 24' BB Pavement Section
Not To Scale

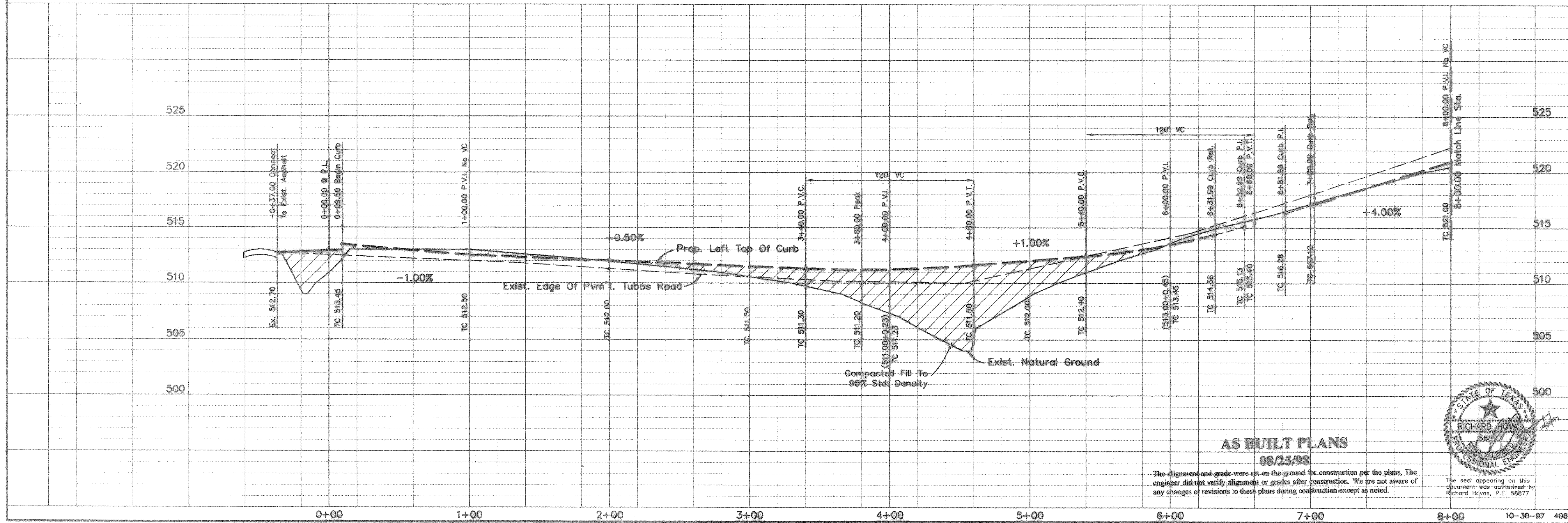
7+27.00 Pavement Sta. Construct 10' Rec. Inlet
TC=518.08, FL=514.08

**CAUTION !!!
EXISTING UTILITIES**

EXISTING UTILITIES AND UNDERGROUND FACILITIES INDICATED ON THESE PLANS HAVE BEEN LOCATED FROM REFERENCE INFORMATION. IT SHALL BE THE RESPONSIBILITY OF THE CONTRACTOR TO VERIFY BOTH HORIZONTALLY AND VERTICALLY THE LOCATION OF ALL EXISTING UTILITIES AND UNDERGROUND FACILITIES PRIOR TO CONSTRUCTION, TO TAKE NECESSARY PRECAUTIONS IN ORDER TO PROTECT ALL FACILITIES ENCOUNTERED. THE CONTRACTOR SHALL PRESERVE AND PROTECT ALL EXISTING UTILITIES FROM DAMAGE DURING CONSTRUCTION.

Note!!
Construct Barrier Free Ramps At All Intersection As Per City Standards.

ROCKWALL LAKE ESTATES No. ONE



Bench Mark 1
Bronze disc at Southeast corner of service road
of I.H. 30 & Sims Road Elev.=566.25
Bench Mark 2
R.R. spike in power pole 50' North Of Tubbs
Road & 300' East Of Texas Ave. Elev.=531.37

PAVING PLAN						
WINDMILL RIDGE ESTATES NO. 4						
City Of Rockwall, Texas						
TIPTON ENGINEERING, INC.						
6330 Belt Line Rd. ~ Suite C ~ Garland, Texas 75043						
DESIGN	DRAWN	DATE	SCALE	NOTES	FILE	NO.
T.E. Inc.	T.E. Inc.	9-96	1"=40'H 1"=5'V		4066	5

AS BUILT PLANS
08/25/98

The alignment and grade were set on the ground for construction per the plans. The engineer did not verify alignment or grades after construction. We are not aware of any changes or revisions to these plans during construction except as noted.

