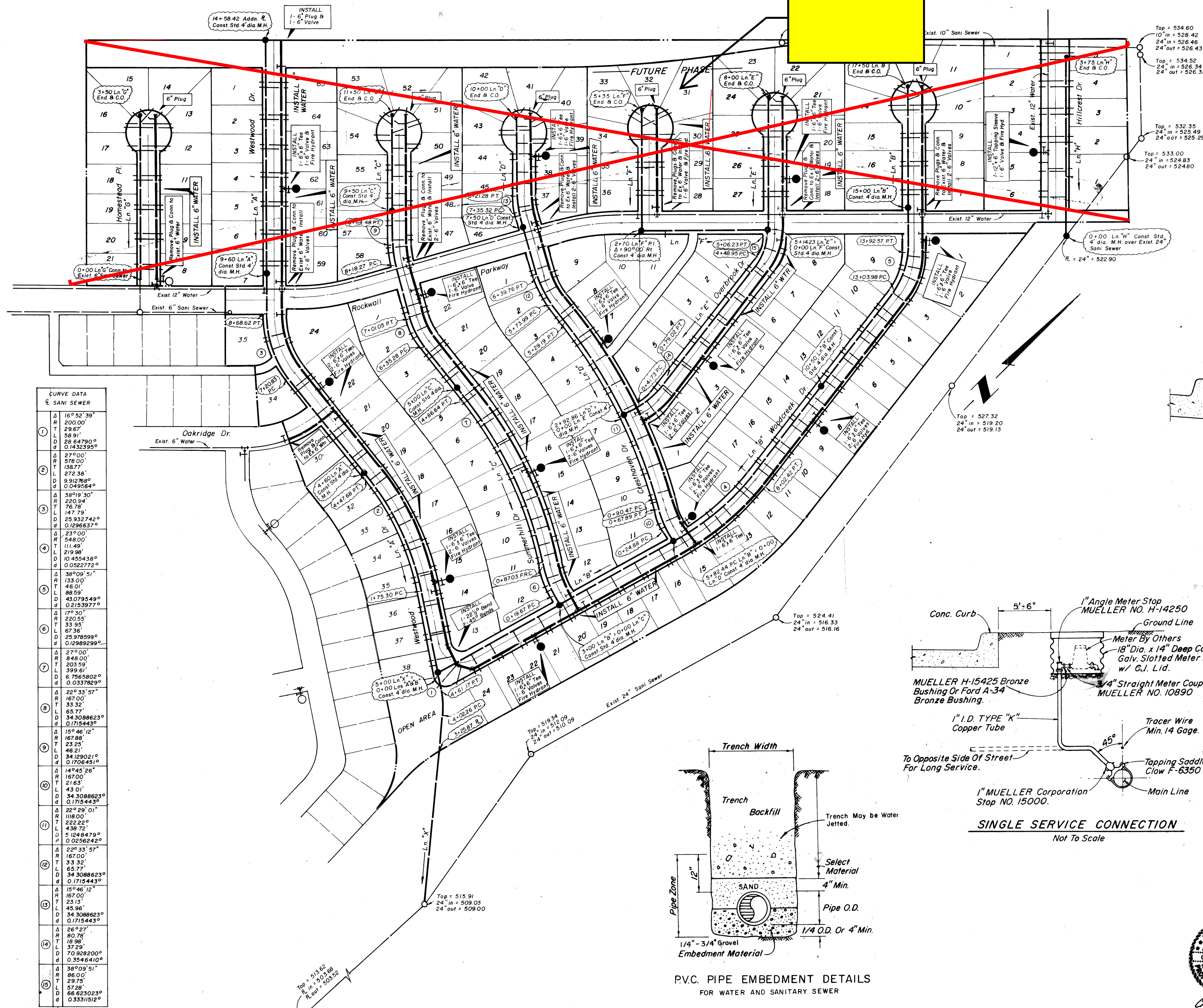


SEE WINDMILL RIDGE PHASE 3B FOR RECORD DRAWINGS OF THIS PART. NOT CONSTRUCTED WITH PHASE 3A.

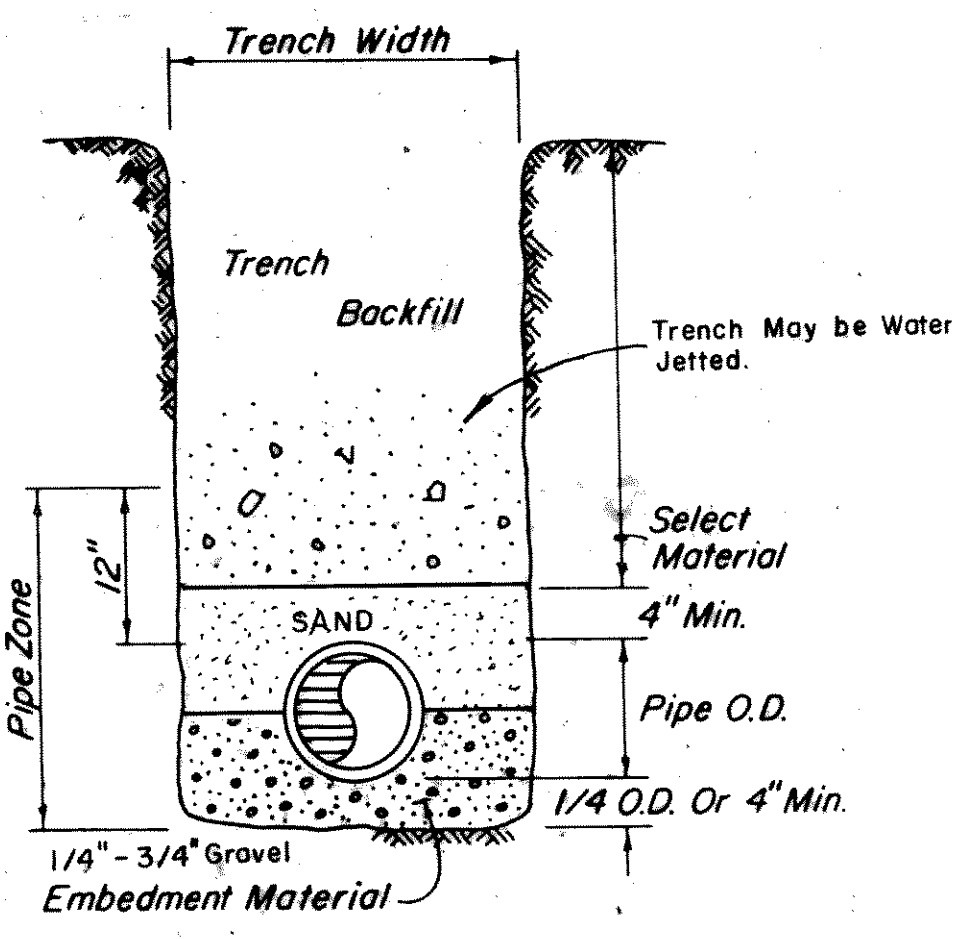
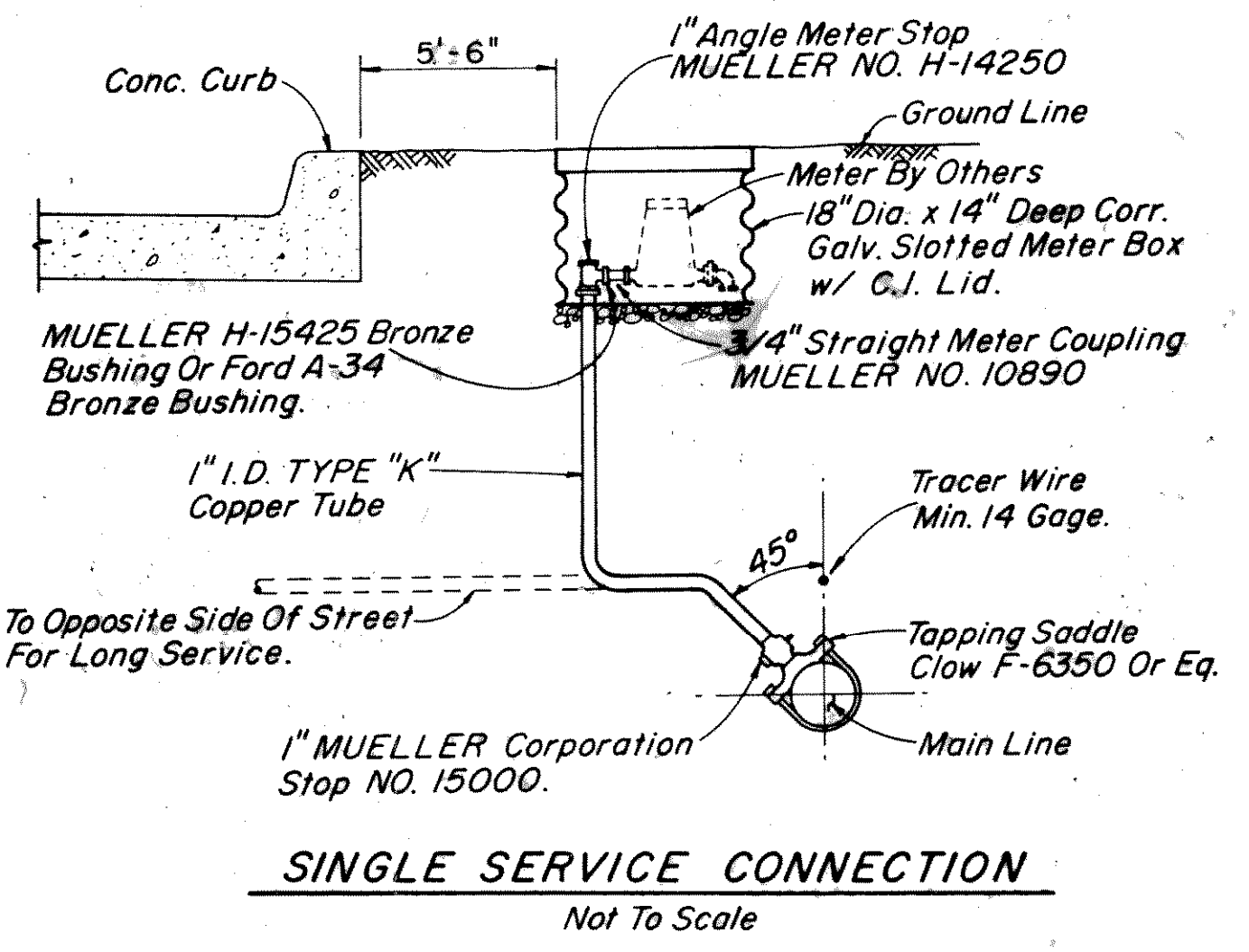
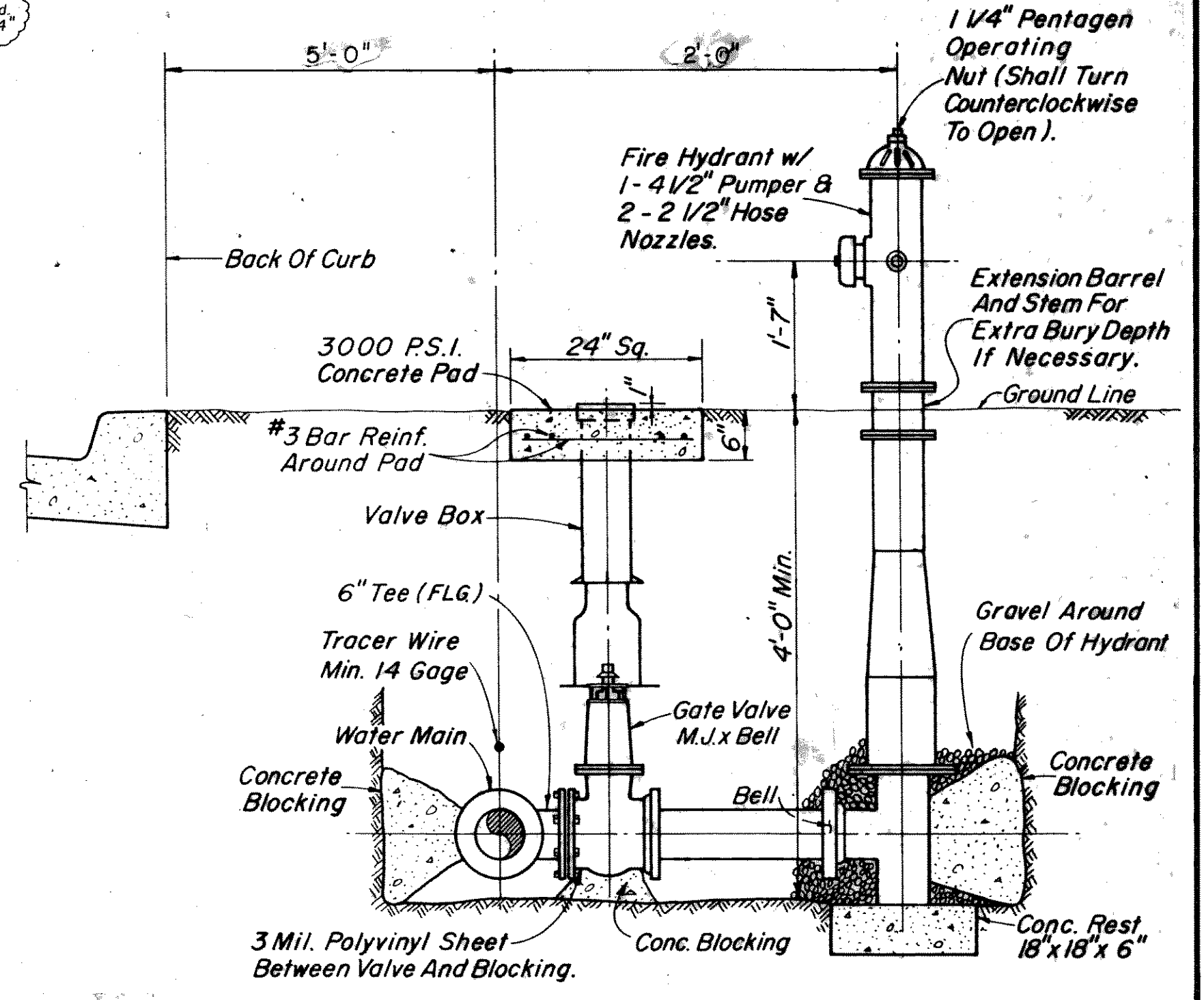
GENERAL NOTES

- 1) Water mains to be P.V.C., C-900, Class 150 pipe.
- 2) Water services to be 1" and located at the center of the lot.
- 3) Meter boxes to be furnished by contractor and shall be subsidiary to the service item.
- 4) A tapping saddle (Clow F-6350 or equal) shall be provided at each service connection.
- 5) Sanitary sewer mains to be P.V.C., SDR-35.
- 6) Sanitary sewer services to be 4" connections only.
- 7) An EMS sanitary marker #1253 will be installed with each sewer service, a maximum of 4' deep.
- 8) A 12 gauge copper (tracer wire) will be installed in the ditch with P.V.C. water and with P.V.C. sewer lines. The tracer wire will be considered subsidiary to the price bid for mains.
- 9) Sanitary sewer services to be 4" and located 10' downstream from the center of the lot.
- 10) Water mains to be located 5.5' off Property line and Sanitary Sewer mains to be located 4.5' off Property line.
- 11) Concrete Encasement on Sanitary Sewer where crossed by Storm Sewer with less than 3' clearance.
- 12) Where water pipe lines either cross or come within nine (9) feet of a Sanitary Sewer pipe line either cast iron or PVC with a minimum working pressure class of 150 PSI must be used.
- 13) Sanitary Sewer lines will be T.V. only if needed by City of Rockwall.
- 14) Material to be placed in accordance with City of Rockwall Standards not N.T.C.O.G.



CURVE DATA  
SANI SEWER

1	16° 52' 39"	200.00'	29.67'	58.91'	28.64790°	0.1432395°
2	27° 00'	578.00'	138.77'	272.36'	9.912768°	0.0495054°
3	38° 19' 30"	220.94'	76.78'	141.73'	25.932742°	0.1296637°
4	23° 00'	548.00'	111.49'	219.98'	10.455438°	0.0527772°
5	38° 09' 51"	133.00'	46.01'	88.59'	43.079549°	0.2153977°
6	17° 30'	220.55'	33.55'	67.36'	25.978599°	0.12989299°
7	27° 00'	848.00'	203.59'	399.6'	6.7665802°	0.0337829°
8	22° 33' 57"	167.00'	33.32'	65.77'	34.3088623°	0.1715443°
9	15° 46' 12"	167.00'	23.25'	46.21'	34.129021°	0.1702451°
10	14° 45' 26"	167.00'	21.63'	43.01'	34.3088623°	0.1715443°
11	22° 29' 01"	118.00'	22.22'	43.87'	5.1248479°	0.0256242°
12	22° 33' 57"	167.00'	33.32'	65.77'	34.3088623°	0.1715443°
13	15° 46' 12"	167.00'	23.13'	45.96'	34.3088623°	0.1715443°
14	26° 27'	80.78'	18.98'	37.29'	70.928200°	0.3546410°
15	38° 09' 51"	86.00'	29.75'	57.28'	66.623023°	0.3331512°



RECORD DRAWING

**WATER & SEWER PLANS**  
**WINDMILL RIDGE ESTATES NO. 3A**  
**ROCKWALL, TEXAS**

John C. Gibson Co. Inc. Consulting Engineers  
 9510 Military Parkway Dallas, Texas 75227

DESIGN	DRAWN	DATE	SCALE	NOTES	FILE	NO.
J.C.G. Co. Inc.	R.J.H.		1" = 100'	R.D.	Windmill Ridge 3A	19 / 21

