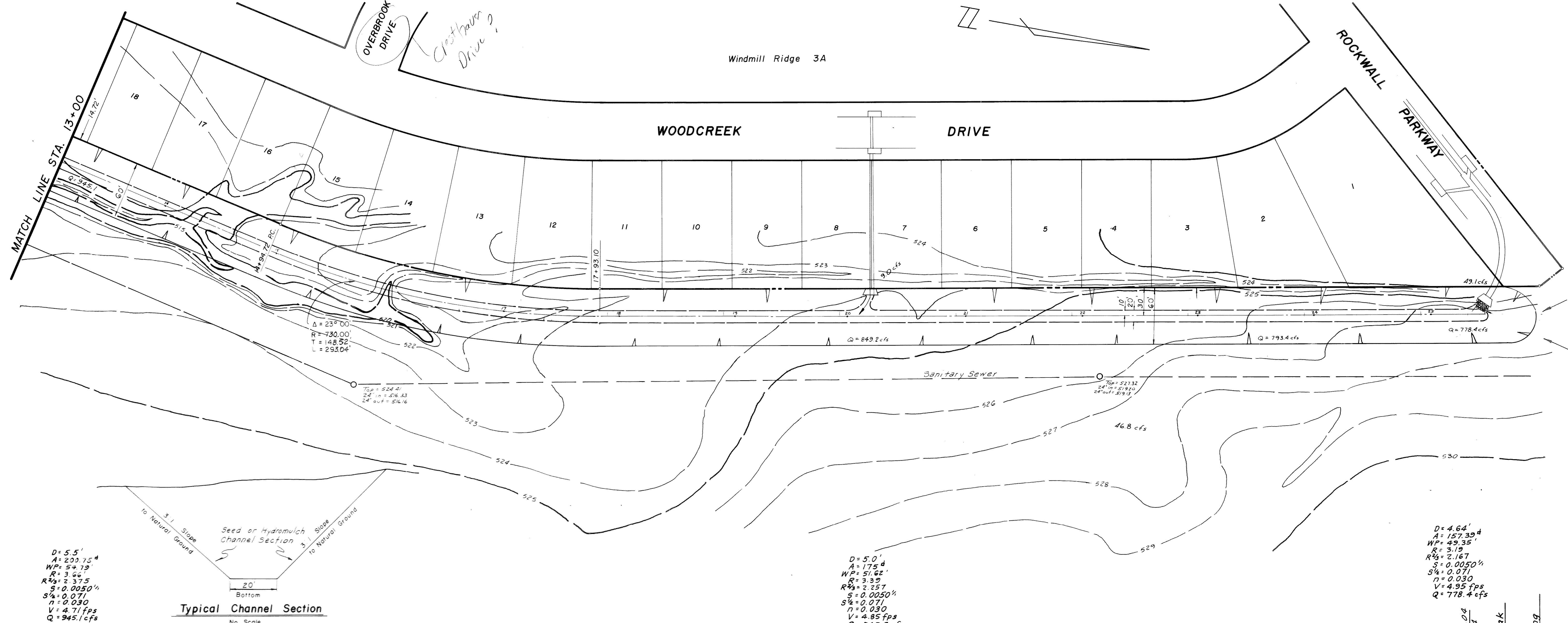


Windmill Ridge 3A

WOODCREEK DRIVE

ROCKWALL PARKWAY



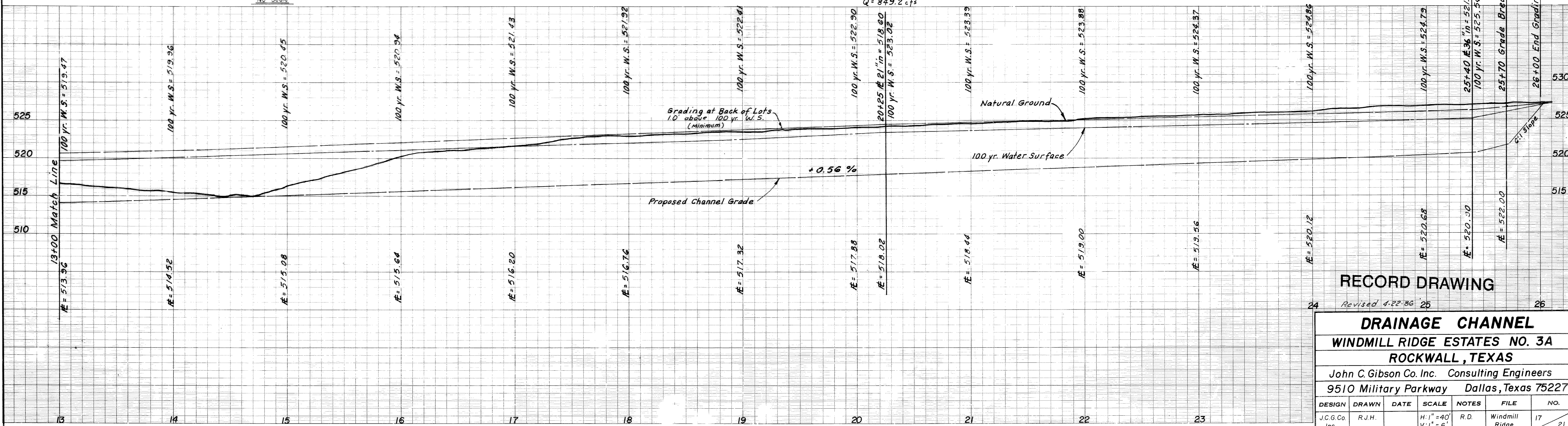
Typical Channel Section

No Scale

$D = 5.5'$
 $A = 200.75'$
 $WP = 54.79'$
 $R = 3.66'$
 $R^2 = 2.375'$
 $S = 0.0050\%$
 $S^2 = 0.071$
 $n = 0.030$
 $V = 4.71$ fps
 $Q = 945.1$ cfs

$D = 5.0'$
 $A = 175'$
 $WP = 51.62'$
 $R = 3.39'$
 $R^2 = 2.357'$
 $S = 0.0050\%$
 $S^2 = 0.071$
 $n = 0.030$
 $V = 4.85$ fps
 $Q = 849.2$ cfs

$D = 4.64'$
 $A = 157.39'$
 $WP = 49.35'$
 $R = 3.19'$
 $R^2 = 2.167'$
 $S = 0.0050\%$
 $S^2 = 0.071$
 $n = 0.030$
 $V = 4.95$ fps
 $Q = 778.4$ cfs



RECORD DRAWING

24 Revised 4-22-86 25 26

DRAINAGE CHANNEL						
WINDMILL RIDGE ESTATES NO. 3A						
ROCKWALL, TEXAS						
John C. Gibson Co. Inc. Consulting Engineers						
9510 Military Parkway Dallas, Texas 75227						
DESIGN	DRAWN	DATE	SCALE	NOTES	FILE	NO.
J.C.G.Co. Inc.	R.J.H.		H: 1" = 40' V: 1" = 6'	R.D.	Windmill Ridge	17 21