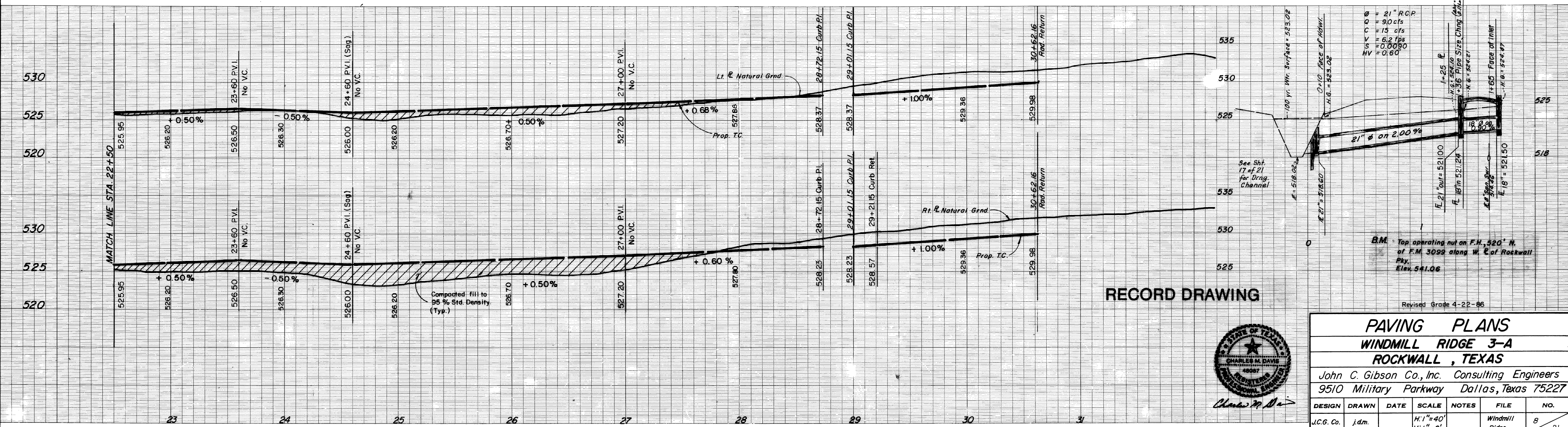


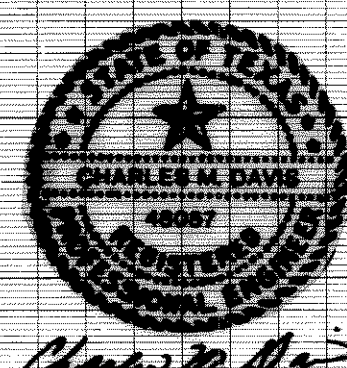
Ø = 18" R.C.P.
 Q = 4.5 cfs
 C = 10 cfs
 V = 5.6 fps
 S = 0.0090
 H.V. = 0.49'

Ø = 21" R.C.P.
 Q = 9.0 cfs
 C = 15 cfs
 V = 6.2 fps
 S = 0.0090
 H.V. = 0.60'



RECORD DRAWING

Revised Grade 4-22-86



PAVING PLANS						
WINDMILL RIDGE 3-A						
ROCKWALL, TEXAS						
John C. Gibson Co., Inc. Consulting Engineers 9510 Military Parkway Dallas, Texas 75227						
DESIGN	DRAWN	DATE	SCALE	NOTES	FILE	NO.
J.C.G. Co.	j.d.m.		H:1"=40' V:1"=6'		Windmill Ridge	B 21