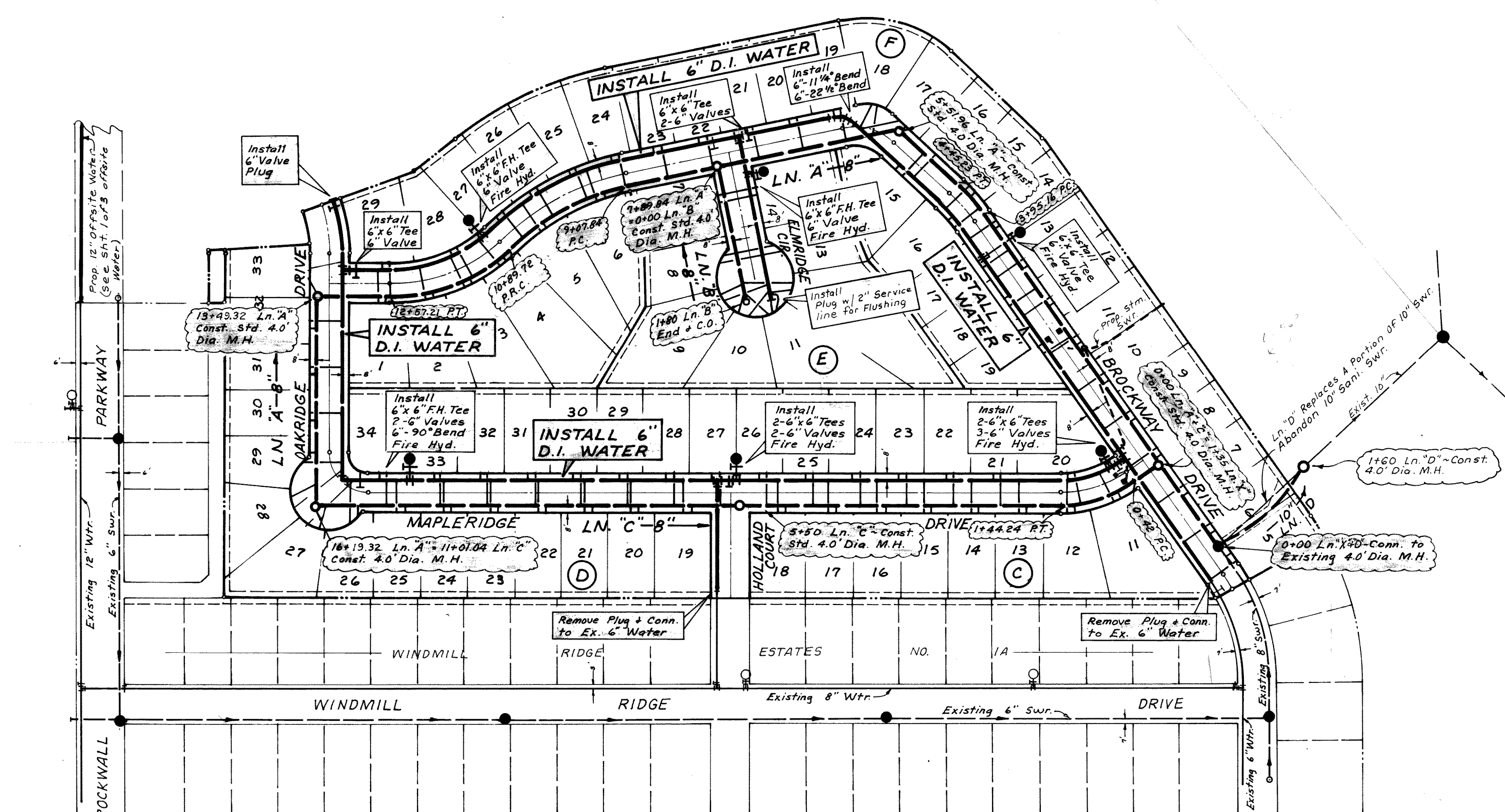
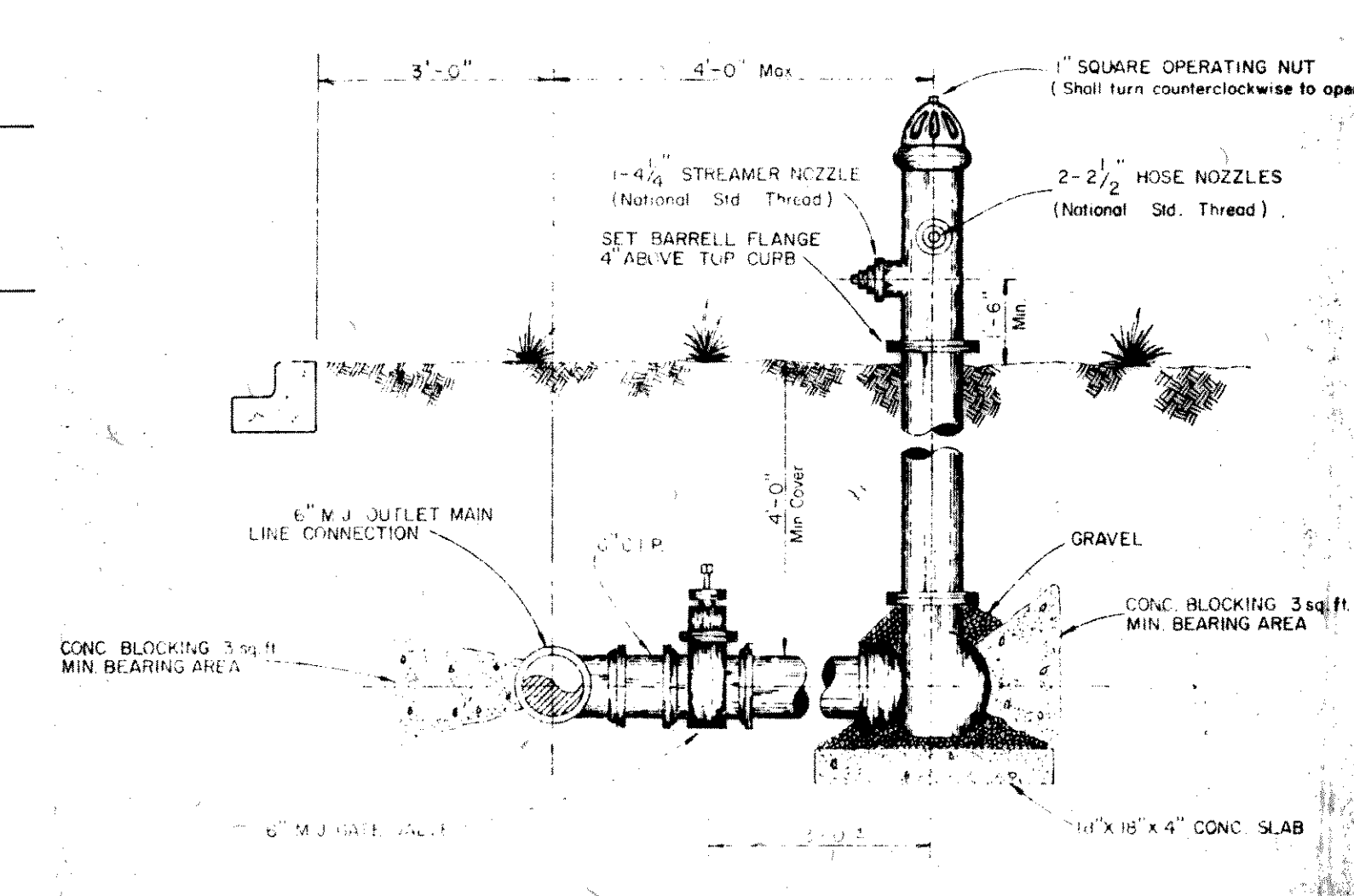
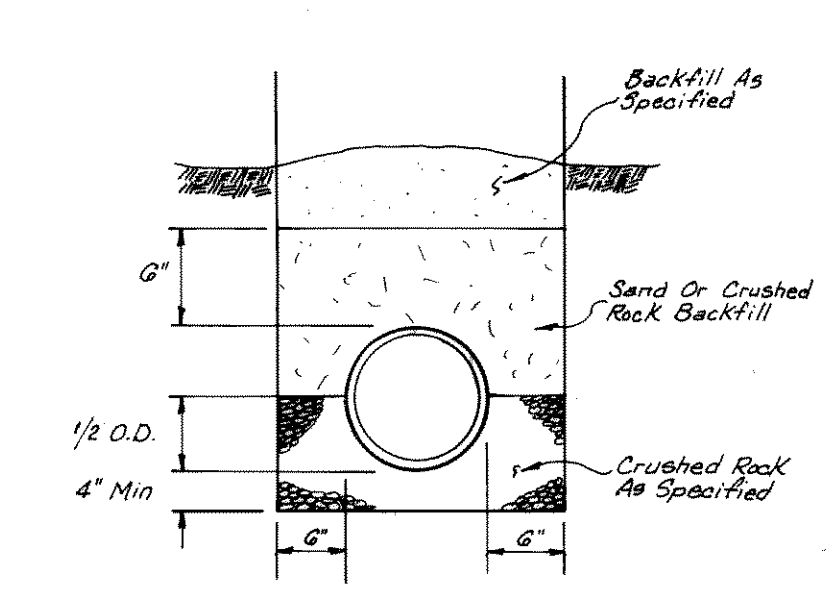
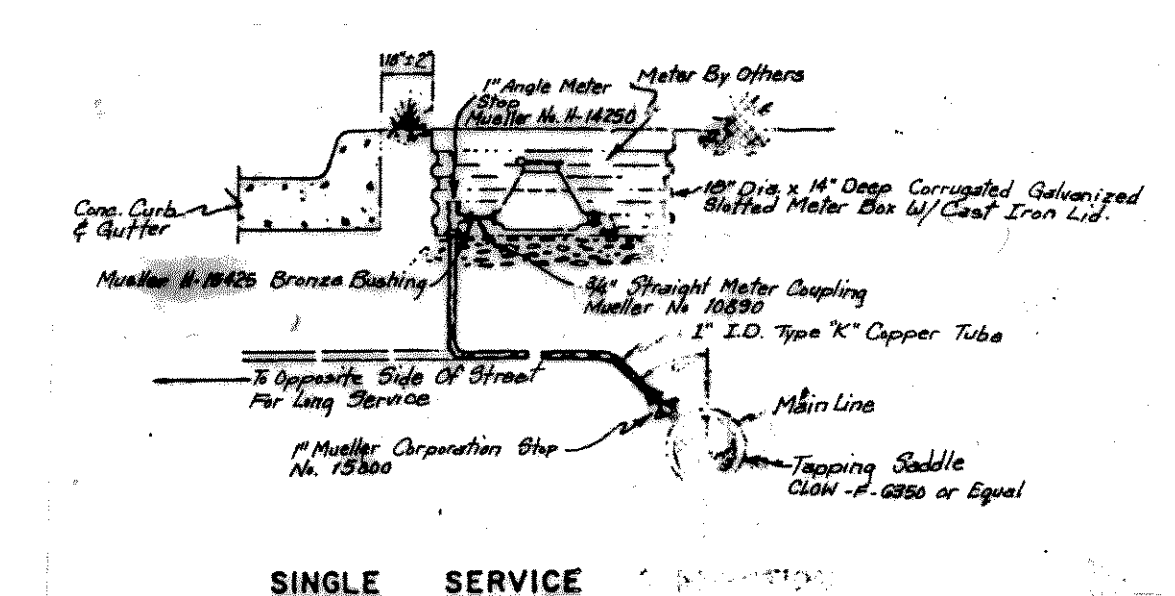


GENERAL NOTES

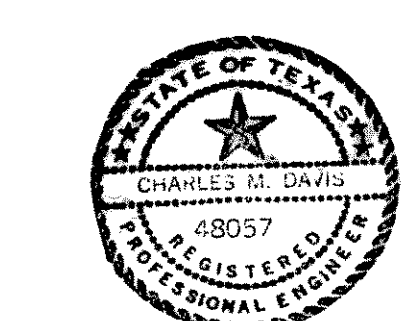
- 1) Water mains to be P.V.C., C-900, Class 150 pipe.
- 2) Water services to be located at the center of the lot.
- 3) Meter boxes to be furnished by contractor and shall be subsidiary to the service item.
- 4) A tapping saddle (Clow F-6350 or equal) shall be provided at each service connection.
- 5) Sanitary sewer mains to be P.V.C., SDR-35.
- 6) Sanitary sewer services to be "Y" connections only.
- 7) An EMS sanitary marker #1253 will be installed with each sewer service, a maximum of 4' deep.
- 8) A 12 gauge copper (tracer wire) will be installed in the ditch with P.V.C. water and with P.V.C. sewer lines. The tracer wire will be considered subsidiary to the price bid for mains.
- 9) Sanitary sewer services to be located 10' downstream from the center of the lot.



F. M. 3097



RECORD DRAWING



WATER & SEWER PLANS
WINDMILL RIDGE ESTATES NO. 2A
ROCKWALL, TEXAS
JOHN C. GIBSON CO., INC. - CONSULTING ENGINEERS
 9510 Military Parkway Dallas, Texas 75227

DESIGN	DRAWN	DATE	SCALE	NOTES	FILE	NO.
J.C.G. Co., Inc.		Nov. 1983	1"=100'	G.M.	Windmill Ridge Estate No. 2A	8 10

Revised 5-21-84 By GM

WATER & SEWER PLANS #10714 #6085