

ONLY STANDARD SIGN POLES WILL BE USED IN THIS DEVELOPMENT. NO DECORATIVE POLES WILL BE USED.

LEGEND	
	STREET LIGHT
	STOP SIGN WITH STREET NAME BLADES
	STREET NAME BLADES
	SPEED LIMIT SIGN (30mph)

- All signage installed shall comply with the current "Texas Manual on Uniform Traffic Control Devices" and the "Standard Highway Sign Designs for Texas." The sign layout drawings shall show the color and dimensions of all the sign face legend components including background color, legend color, borders, symbols, letter size and style.
- For a street with a cul-de-sac end, a standard W 14-2a shall be mounted over the street name blade, if the cul-de-sac is not clearly visible from the adjoining roadway, or is located in excess of 400 linear feet from the adjoining roadway.
- Sign posts shall be 2 3/8 O.D. galvanized steel tube sign post with a galvanized finish.
- Sign clamps and brackets shall be high strength aluminum.
- Street name sign blades shall be double-sided with rounded corners.
- Street Name Blades shall be nine-inch (9") tall flat aluminum. The blades shall be 0.808 inches thick and be a minimum of 36" long.
- The lettering for the street signs shall be 3M Scotchlite Series 3930 high intensity prismatic material sheeting shall be used for street, regulatory, warning signs and shall be high intensity diamond grade type III prismatic. The street sign background shall be green and the legend shall be white.
- The street sign blade must incorporate the current City of Rockwall logo. The logo shall consist of white 3M Scotchlite Series 3930 high intensity prismatic material (product code 3930).
- Block Numbers are required on all street name blades and shall be located on the top right corner of the street blade.
- The lettering for the street blades shall be composed of a combination of lower-case letters with initial upper-case letters. The Clearview TCAD-1W font shall be used. The lettering shall be composed of initial upper-case letters of at least 6 inches in height and lower case letters at least 4.5 inches in height. For supplementary lettering to indicate the type of street (such as Street, Avenue or Road) shall be composed of initial upper-case letters at least 3-inches in height and lower-case letters at least 2.25 inches in height. Abbreviations may be used (for example St., Ave., or Rd) except the street name itself. The supplementary lettering shall be located at the lower right corner of the street blade, under the block number.
- The street blade sign shall consist of green 3M Scotchlite Series 3930 high intensity prismatic material background - (product code 3937). The lettering shall consist of white 3M Scotchlite Series 3930 high intensity prismatic material (product code - 3930). The background sheeting shall be white 3M 3900 high intensity prismatic material. The background material shall be applied to the full width and height of the sign blank leaving no metal exposed. The background material shall be one continuous piece of material. Patching of background material is not allowed and any sign with patching material of any type will be rejected by the City.

Alternative Option:

As an alternative, the foreground color may be green transparent Scotchlite ElectroCut1177 film (E.C. film). Lettering shall be cut out and removed producing a single continuous piece of green transparent film material.

The developer shall be responsible for furnishing and installing all regulatory signage, warning signage and street name signage along with all the necessary sign mounts in accordance with the approved engineering plans. A sample production sign shall be submitted to the Traffic Signs & Pavement Markings Supervisor for review and approval. The sample shall be directed to the City of Rockwall Service Center located at 1600 Airport Road, Rockwall Texas 75087. The sample sign must be submitted at least 10 days prior to the scheduled installation date.

All street and regulatory signage shall be installed, inspected and approved, prior to final acceptance of the project. This inspection typically takes place as part of the engineering department's final walkover. Any sign related issue/issues will be noted on the projects final punch list.

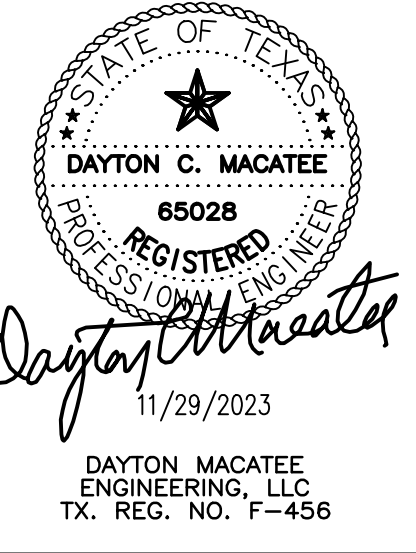
NOTES:

- THESE GRAPHICAL REPRESENTATIONS OF LIGHT POLES AND STREET SIGNS SHOW THE GENERAL LOCATION OF INSTALLATION. CONTRACTOR SHALL FOLLOW ALL APPLICABLE CITY CODES AND REGULATIONS WHEN INSTALLING STREET SIGNS AND LIGHT POLES.
- ALL CONSTRUCTION/INSTALLATION SHALL BE IN ACCORDANCE WITH THE CITY OF ROCKWALL STANDARD DRAWINGS AND SPECIFICATIONS.
- NON-DECORATIVE, STANDARD STREET SIGN POLES AND FIXTURES WILL BE USED THROUGHOUT THIS DEVELOPMENT.

RECORD DRAWINGS

The information contained hereon was provided by the contractor based on their field installation. The undersigned registered professional engineer did not provide inspection on this project, and therefore makes no warrants concerning the accuracy or completeness of the information provided.

Dayton C. Macatee
 NOVEMBER 29, 2023
 Dayton C. Macatee, P.E. - Macatee Engineering, L.L.C. (Tx. Reg. No. F-456) Date
 12655 N. Central Expwy Suite 420, Dallas, Texas 75243 - Tel: 214-373-1180
 CITY OF ROCKWALL MONUMENT "COR-2"
 ALUMINUM DISK STAMPED "CITY OF ROCKWALL SURVEY MONUMENT" +/- .866'
 EAST OF INTERSECTION OF WILLIAMS STREET AND CARUTH LANE, AND 50' SOUTH
 OF CL OF WILLIAMS STREET. N: 7029731.124, E: 2598589.314, ELEV=529.10
 CITY OF ROCKWALL MONUMENT "COR-4"
 ALUMINUM DISK STAMPED "CITY OF ROCKWALL SURVEY MONUMENT" ON NORTH SIDE
 OF DALTON ROAD +/- .210' WEST OF INTERSECTION OF SH 205 AND DALTON ROAD,
 AND 10' NORTH OF CURB LINE. N: 7040336.992, E: 2592422.633, ELEV=541.67



STREET LIGHT AND SIGNAGE PLAN			
WINDING CREEK			
CITY OF ROCKWALL, ROCKWALL COUNTY, TEXAS			
		CIVIL ENGINEERING DESIGN & CONSULTING (Tex. Reg. No. F-456) 12655 N. CENTRAL EXPWY, SUITE 420 DALLAS, TEXAS 75243 TEL 214-373-1180 * FAX 214-373-6580 daytonm@macatee-engineering.com phillipf@macatee-engineering.com	
DESIGNED BCP	CHECKED SDA	DATE 11/29/2023	DWG FILE WC_LIGHT
PROJECT # SKO_WC	SHEET NO. 53 OF 53		