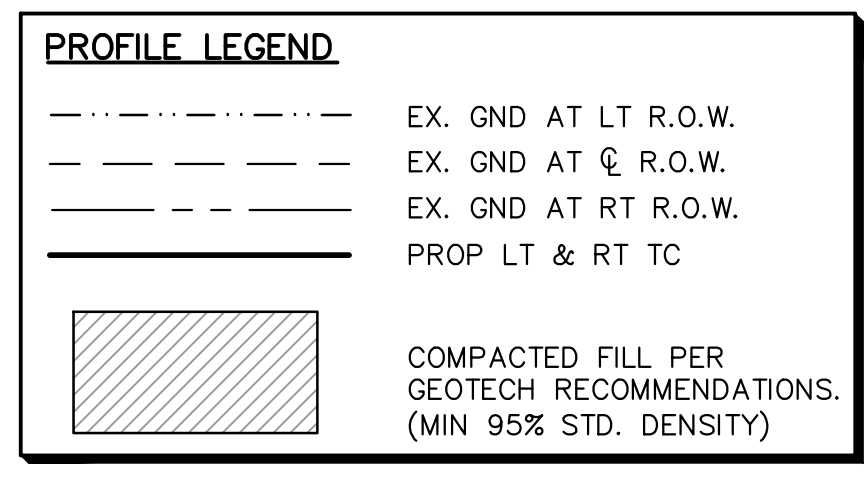
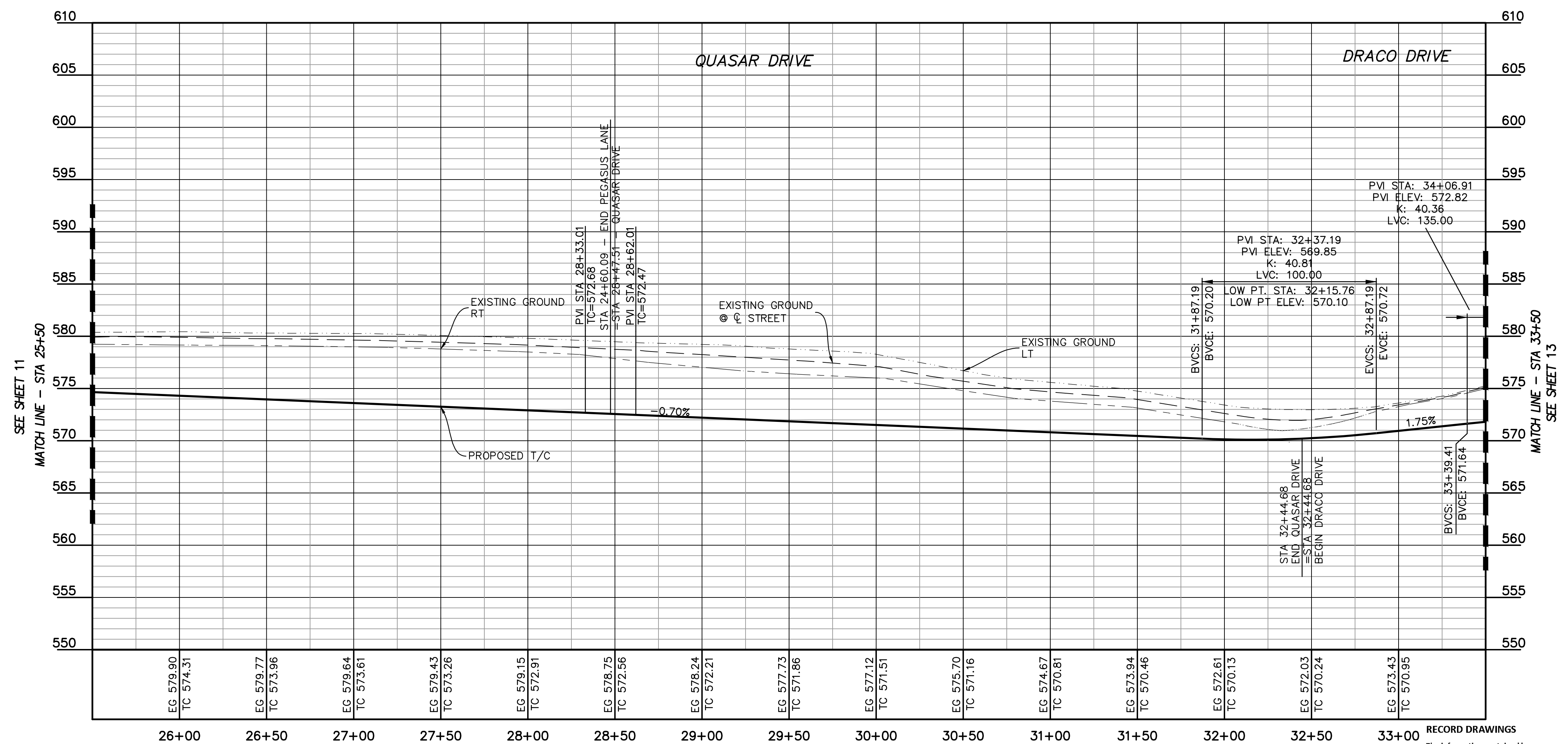
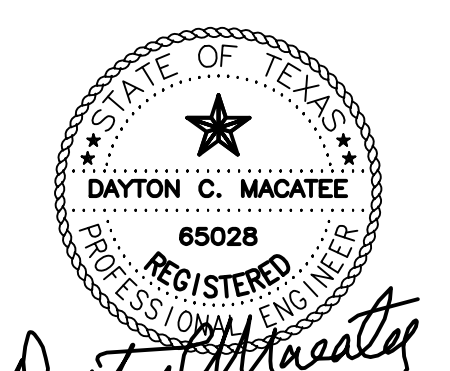


- GENERAL NOTES:**
- 1) ALL CONSTRUCTION SHALL BE IN ACCORDANCE WITH THE CITY OF ROCKWALL STANDARDS.
 - 2) THE CONTRACTOR SHALL VERIFY THE HORIZONTAL AND VERTICAL LOCATIONS OF ALL EXISTING UTILITIES IN THE AREA OF CONSTRUCTION PRIOR TO BEGINNING CONSTRUCTION.
 - 3) THE CONTRACTOR SHALL NOTIFY ENGINEER OF RECORD OF ANY DISCREPANCIES BETWEEN THESE PLANS AND ACTUAL FIELD CONDITIONS.
 - 4) DIMENSIONS ARE TO BACK OF CURB, UNLESS OTHERWISE NOTED.



LEGEND

C.O.R.	CITY OF ROCKWALL	← . . . →	VALLEY GUTTER
V.S.E.	VISIBILITY & SIDEWALK EASEMENT	→	DIRECTION OF FLOW
TC	TOP OF CURB	—	CENTERLINE
LP	LOW POINT	—	ADA CROSSING (SEE ADA COMPLIANCE NOTE)
HP	HIGH POINT	—	COMPLIANCE NOTE
BFR	BARRIER FREE RAMP	—	PROPOSED SIDEWALK (BY DEVELOPER, SEE SIDEWALK PLAN)
24.5'R	RADIUS	—	BFR PER CITY OF ROCKWALL STD DETAIL R-2125A
PC	POINT OF CURVATURE	—	
PT	POINT OF TANGENCY	—	
PI	POINT OF INTERSECTION	—	
PVI	POINT OF VERTICAL INTERSECTION	—	
CONST.	CONSTRUCT	—	
C	CENTERLINE	—	
RT	RIGHT	—	
LT	LEFT	—	
GND	GROUND	—	
	PERPENDICULAR CURB RAMP PER TxDOT DETAIL PED-18	—	



DAYTON C. MACATEE
 ENGINEERING, LLC
 TX. REG. NO. F-456
 11/29/2023

PAVING PLAN & PROFILE
WINDING CREEK
 CITY OF ROCKWALL, ROCKWALL COUNTY, TEXAS

MACATEE CIVIL ENGINEERING
 CIVIL ENGINEERING DESIGN & CONSULTING
 12655 N. CENTRAL EXPWY, SUITE 420
 DALLAS, TEXAS 75243
 TEL 214-373-1180 * FAX 214-373-6580
 daytonm@macatee-engineering.com
 philipf@macatee-engineering.com

DESIGNED	CHECKED	DATE	DWG FILE	PROJECT #	SHEET NO.
BCP	SDA	11/29/2023	WC_Paving	SKO_WC	12 OF 53

RECORD DRAWINGS
 The information contained hereon was provided by the contractor based on their field installation. The undersigned registered professional engineer did not provide inspection on this project, and therefore makes no warranties concerning the accuracy or completeness of the information provided.

Dayton C. Macatee, P.E. - Macatee Engineering, L.L.C. (Tx. Reg. No. F-456) Date: **NOVEMBER 29, 2023**
 12655 N. Central Expwy Suite 420, Dallas, Texas 75243 - Tel: 214-373-1180

CITY OF ROCKWALL MONUMENT "COR-2"
 ALUMINUM DISK STAMPED "CITY OF ROCKWALL SURVEY MONUMENT" +/- .866'
 EAST OF INTERSECTION OF WILLIAMS STREET AND CARUTH LANE, AND 50' SOUTH OF CL OF WILLIAMS STREET. N: 7029731.124, E: 2598589.314, ELEV=529.10

CITY OF ROCKWALL MONUMENT "COR-4"
 ALUMINUM DISK STAMPED "CITY OF ROCKWALL SURVEY MONUMENT" ON NORTH SIDE OF DALTON ROAD +/- .210' WEST OF INTERSECTION OF SH 205 AND DALTON ROAD, AND 10' NORTH OF CURB LINE. N: 7040336.992, E: 2592422.633, ELEV=541.67