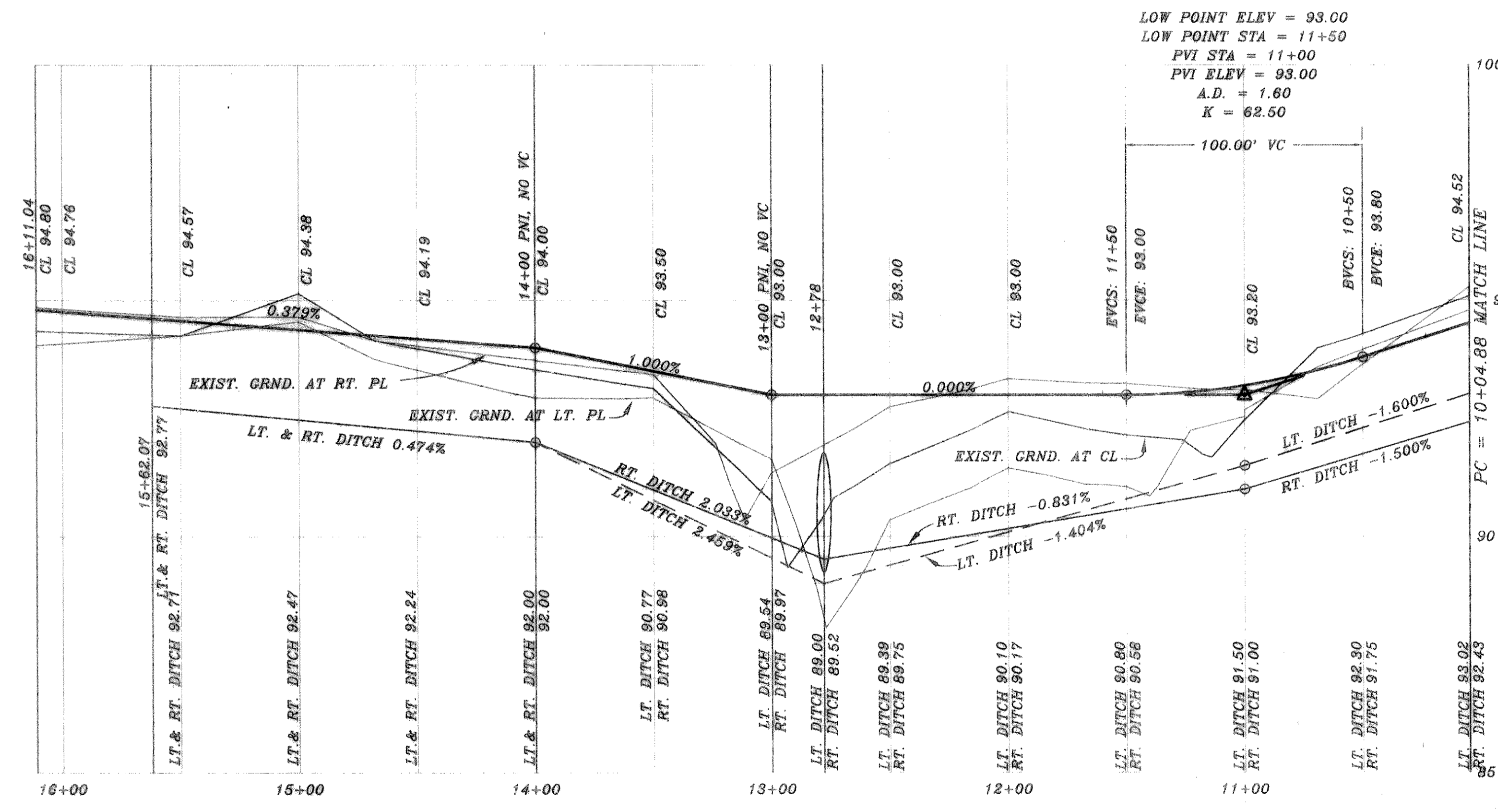
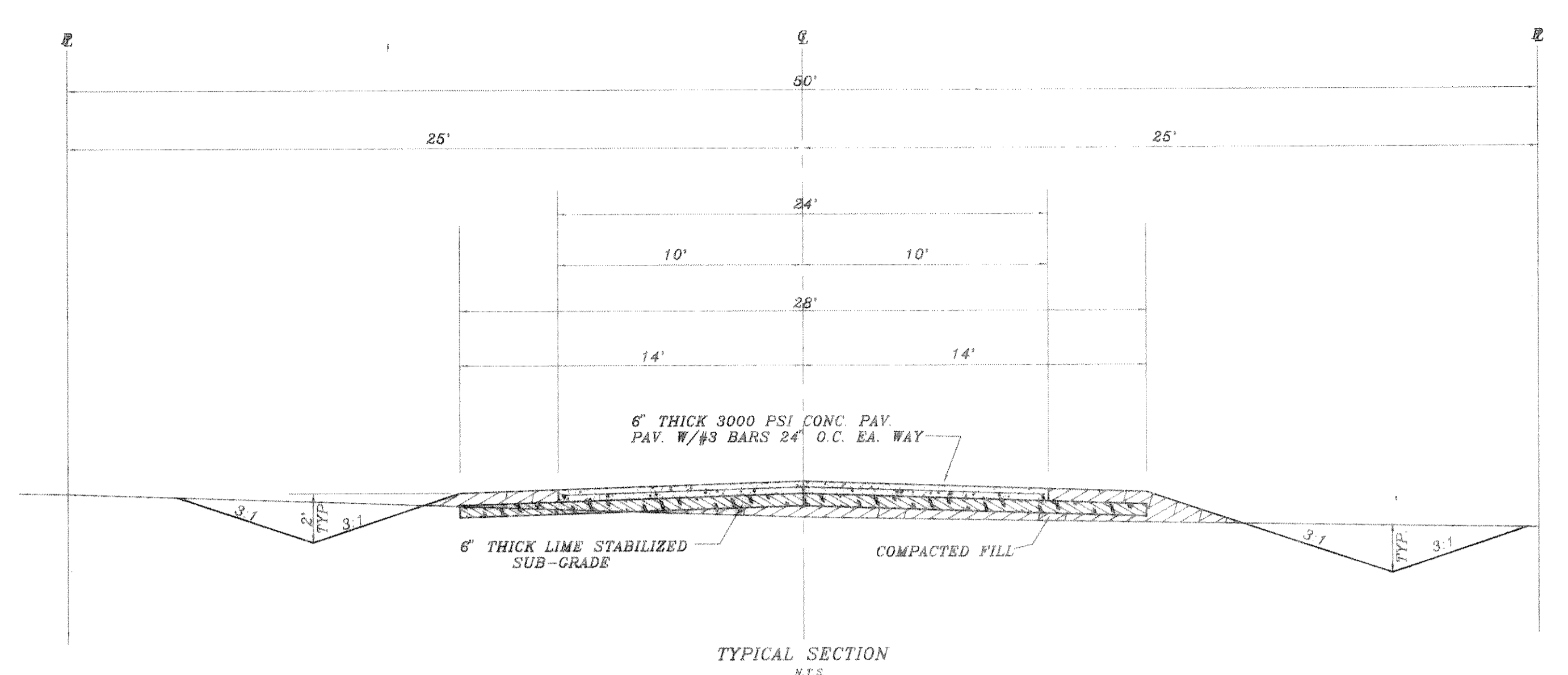
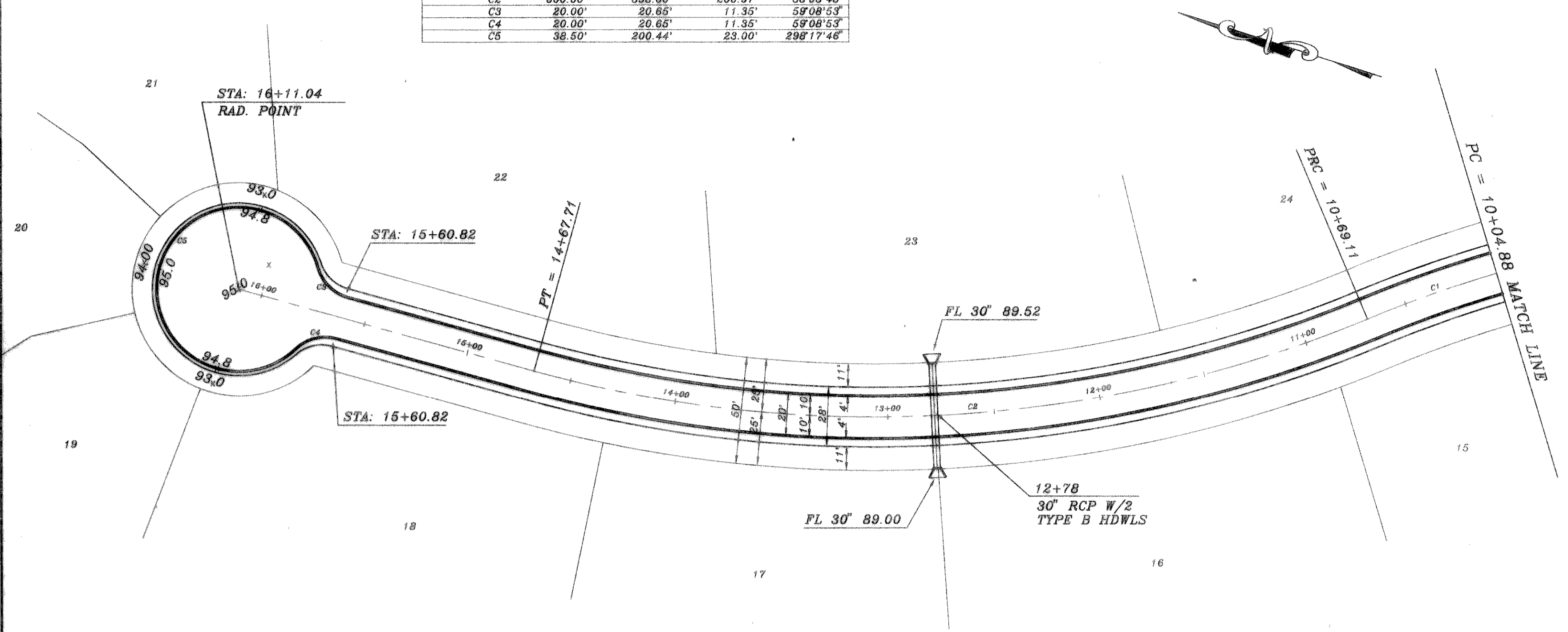


CURVE	RADIUS	LENGTH	TANGENT	DELTA
C1	600.00'	64.24'	32.15'	06°08'03"
C2	800.00'	398.60'	206.97'	38°03'48"
C3	20.00'	20.65'	11.35'	59°06'53"
C4	20.00'	20.65'	11.35'	59°06'53"
C5	36.50'	200.44'	23.00'	298°17'46"



LOW POINT ELEV = 93.00
 LOW POINT STA = 11+50
 PVI STA = 11+00
 PVI ELEV = 93.00
 A.D. = 1.60
 K = 62.50



B.M. C.L. TOP HEADWALL AT PAV.
 STA. 0+30.55' RT
 ELEVATION = 100.00

9624PV2 HAROLD L. EVANS CONSULTING ENGINEER P.O. BOX 28355 2331 CUS THOMASSON ROAD, SUITE 102 DALLAS, TEXAS 75228 (214) 328-8133		PROPOSED PAVING WILLOWCREST WILLOWCREST ESTATES COUNTY OF ROCKWALL		SHEET NO. 3 5 JOB NO. 9624
REVISION DESCRIPTION REV 6/10/96 REV 6/7/96	DATE 4/30/96	SCALE 1" = 40' 1" = 2'	DESIGN H.L.E.	DRAWN