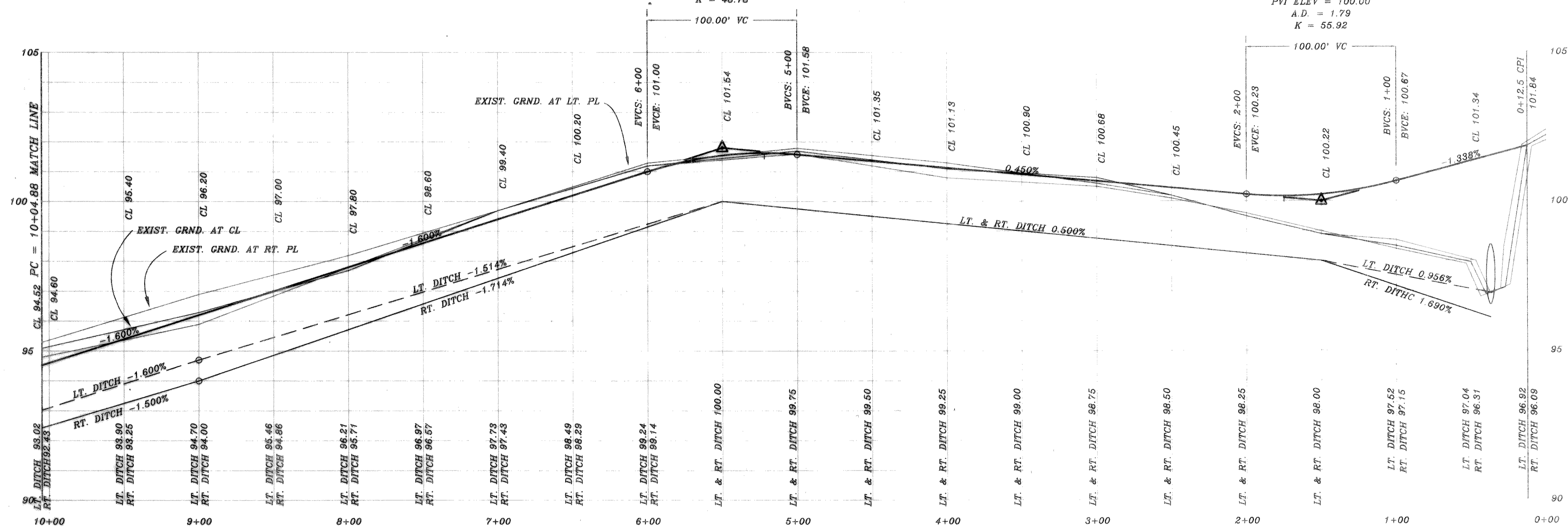


HIGH POINT ELEV = 101.82  
 HIGH POINT STA = 5+21.95  
 PVI STA = 5+50  
 PVI ELEV = 101.80  
 A.D. = -2.05  
 K = 48.78

LOW POINT ELEV = 100.17  
 LOW POINT STA = 1+74.83  
 PVI STA = 1+50  
 PVI ELEV = 100.00  
 A.D. = 1.79  
 K = 55.92



B.M.  
 C.L. TOP HEADWALL AT PAV.  
 STA. 0+30, 55' RT  
 ELEVATION = 100.00



REVISION DESCRIPTION	DATE	SCALE	DESIGN	DRAWN	PROPOSED PAVING <b>WILLOWCREST</b> WILLOWCREST ESTATES COUNTY OF ROCKWALL	SHEET NO. 2 5 JOB NO. 9624
	4/29/96	1" = 40' 1" = 2'	H.L.E.			

HAROLD L. EVANS  
 CONSULTING ENGINEER  
 P.O. BOX 28365  
 2331 GUS THOMASSON ROAD, SUITE 102  
 DALLAS, TEXAS 75228 (214) 328-8133