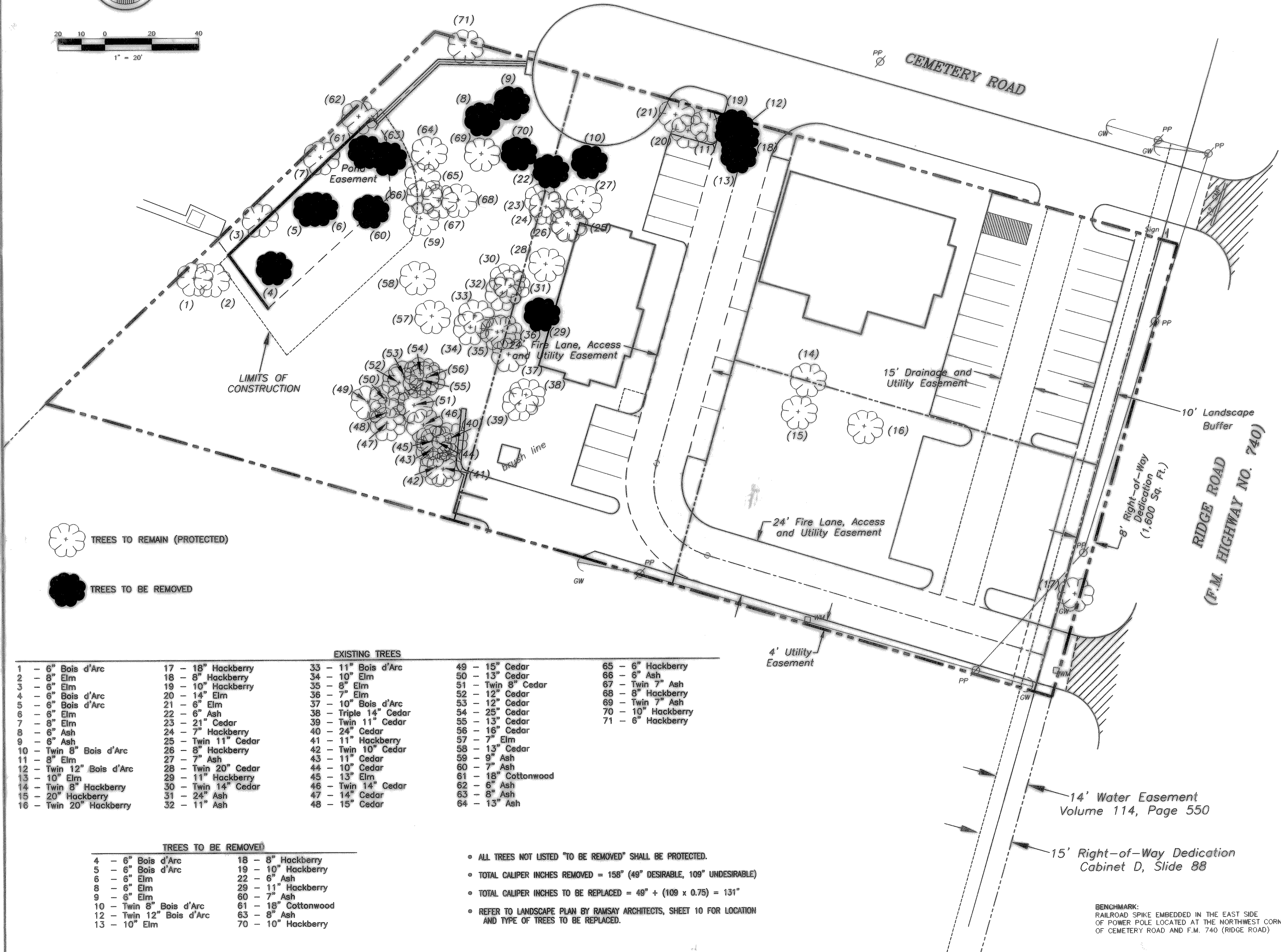
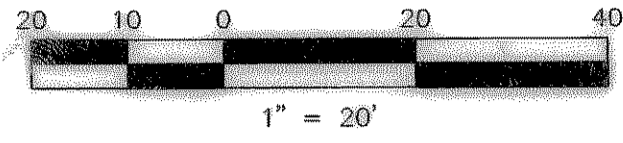
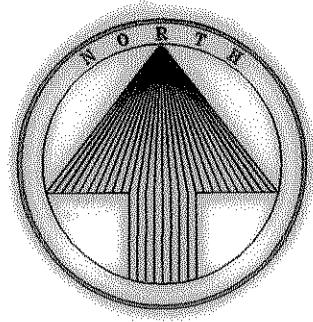


NOTE: THIS TREE SCAPE PLAN COVERS THE AREAS OF DEVELOPMENT AND CONSTRUCTION ASSOCIATED WITH THE WILLIS - SEALOCK PLAT (EXCAVATION, PAVING AND UTILITIES)



TREES TO REMAIN (PROTECTED)

TREES TO BE REMOVED

EXISTING TREES

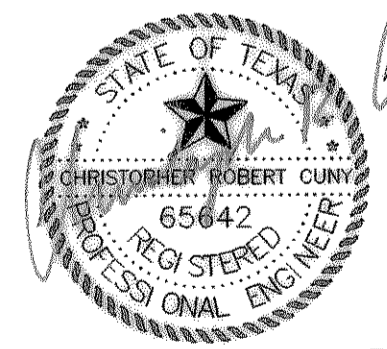
1 - 6" Bois d'Arc	17 - 18" Hackberry	33 - 11" Bois d'Arc	49 - 15" Cedar	65 - 6" Hackberry
2 - 8" Elm	18 - 8" Hackberry	34 - 10" Elm	50 - 13" Cedar	66 - 6" Ash
3 - 6" Elm	19 - 10" Hackberry	35 - 8" Elm	51 - Twin 8" Cedar	67 - Twin 7" Ash
4 - 6" Bois d'Arc	20 - 14" Elm	36 - 7" Elm	52 - 12" Cedar	68 - 8" Hackberry
5 - 6" Bois d'Arc	21 - 6" Elm	37 - 10" Bois d'Arc	53 - 12" Cedar	69 - Twin 7" Ash
6 - 6" Elm	22 - 6" Ash	38 - Triple 14" Cedar	54 - 25" Cedar	70 - 10" Hackberry
7 - 6" Elm	23 - 21" Cedar	39 - Twin 11" Cedar	55 - 13" Cedar	71 - 6" Hackberry
8 - 6" Ash	24 - 7" Hackberry	40 - 24" Cedar	56 - 16" Cedar	
9 - 6" Ash	25 - Twin 11" Cedar	41 - 11" Hackberry	57 - 7" Elm	
10 - Twin 8" Bois d'Arc	26 - 8" Hackberry	42 - Twin 10" Cedar	58 - 13" Cedar	
11 - 8" Elm	27 - 7" Ash	43 - 11" Cedar	59 - 9" Ash	
12 - Twin 12" Bois d'Arc	28 - Twin 20" Cedar	44 - 10" Cedar	60 - 7" Ash	
13 - 10" Elm	29 - 11" Hackberry	45 - 13" Elm	61 - 18" Cottonwood	
14 - Twin 8" Hackberry	30 - Twin 14" Cedar	46 - Twin 14" Cedar	62 - 6" Ash	
15 - 20" Hackberry	31 - 24" Ash	47 - 14" Cedar	63 - 8" Ash	
16 - Twin 20" Hackberry	32 - 11" Ash	48 - 15" Cedar	64 - 13" Ash	

TREES TO BE REMOVED

4 - 6" Bois d'Arc	18 - 8" Hackberry
5 - 6" Bois d'Arc	19 - 10" Hackberry
6 - 6" Elm	22 - 6" Ash
8 - 6" Elm	29 - 11" Hackberry
9 - 6" Elm	60 - 7" Ash
10 - Twin 8" Bois d'Arc	61 - 18" Cottonwood
12 - Twin 12" Bois d'Arc	63 - 8" Ash
13 - 10" Elm	70 - 10" Hackberry

- ALL TREES NOT LISTED "TO BE REMOVED" SHALL BE PROTECTED.
- TOTAL CALIPER INCHES REMOVED = 158" (49" DESIRABLE, 109" UNDESIRABLE)
- TOTAL CALIPER INCHES TO BE REPLACED = 49" + (109 x 0.75) = 131"
- REFER TO LANDSCAPE PLAN BY RAMSAY ARCHITECTS, SHEET 10 FOR LOCATION AND TYPE OF TREES TO BE REPLACED.

THE SEAL APPEARING ON THIS DOCUMENT WAS AUTHORIZED BY CHRISTOPHER R. CUNY, P.E. 65642



CONSTRUCTION RECORD DRAWING

TREE SURVEY & TREE SCAPE PLAN	
WILLIS SEALOCK ADDITION	
CITY OF ROCKWALL, ROCKWALL COUNTY, TEXAS	
Michael Willis	
2235 Ridge Road • Rockwall, Texas 75087 • (972) 722-1846	
F.C. CUNY CORPORATION	
4222 Rosshill Rd, Suite 7 • Garland, Texas 75043 • (972) 240-7700	
Drawn By:	Checked By:
GM	C.C.
Date:	Scale:
01/03	H:1"=20' V:1"=5'
Project No.:	Sheet No.:
01-000	9 of 10

BENCHMARK: RAILROAD SPIKE EMBEDDED IN THE EAST SIDE OF POWER POLE LOCATED AT THE NORTHWEST CORNER OF CEMETERY ROAD AND F.M. 740 (RIDGE ROAD)

14' Water Easement
Volume 114, Page 550

15' Right-of-Way Dedication
Cabinet D, Slide 88

10' Landscape Buffer
8' Right-of-Way Dedication (1,600 Sq. Ft.)
RIDGE ROAD (F.M. HIGHWAY NO. 740)

CEMETERY ROAD

LIMITS OF CONSTRUCTION

15' Drainage and Utility Easement

24' Fire Lane, Access and Utility Easement

4' Utility Easement

Fire Lane, Access and Utility Easement

Pond Easement