

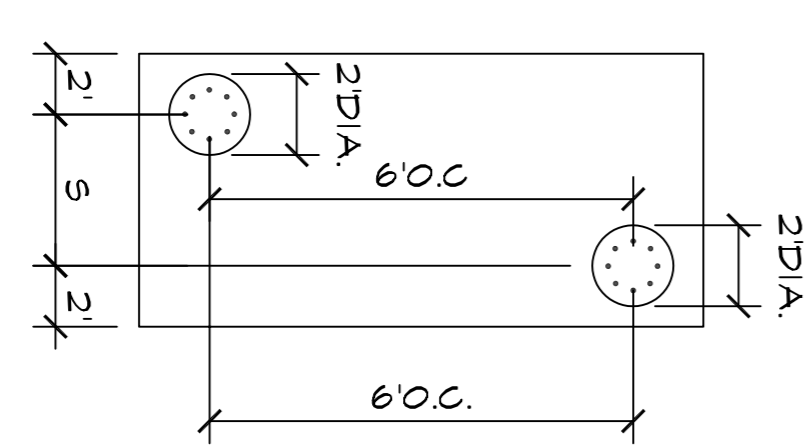
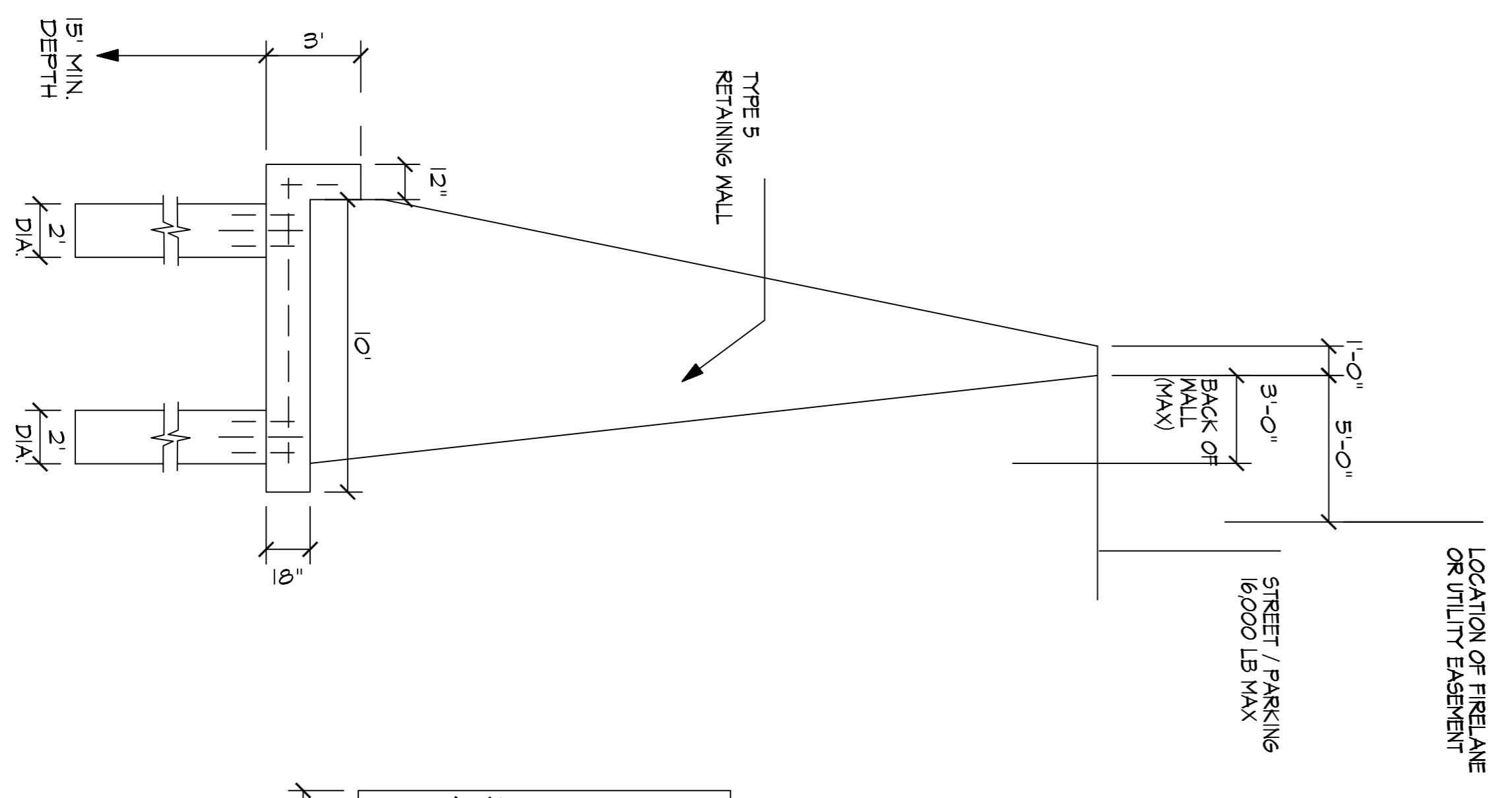
	A	B	C	D	E	F
HEIGHT	12'	14'	16'	18'	20'	22'
BASE (B)	1'-2"	1'-6"	2'-0"	2'-6"	3'-0"	3'-6"
SUB BASE (C)	6"	6"	6"	6"	6"	6"

TYPICAL FOOTING SECTION

TYPICAL PIER

TYPICAL FOOTING PLAN

4 TYPE 4 STANDARD GRAVITY RETAINING WALL / WITH PIERS



PIERS SPACING	PIERS SPACING
WALL HEIGHT 5' SPACING	WALL HEIGHT 5' SPACING
6'	108"
8'	120"
10'	132"
12'	144"
14'	156"

SPECIFICATION TABLE - WITH SURCHARGE CONSIDERATION

HEIGHT (A)	12'	13'	14'	15'	16'	17'	18'	19'	20'	21'	22'	23'
BASE (B)	1'	1'-2"	1'-6"	2'-0"	2'-6"	3'	3'-6"	4'	5'	2'-6"	3'	3'-6"
SUB BASE (C)	6"	6"	6"	6"	6"	6"	6"	6"	6"	6"	6"	6"

5 TYPE 5 STANDARD GRAVITY RETAINING WALL / WITH PIERS

MATERIALS

1. ALL MORTAR - SHALL BE TYPE 'M' 2500 PSI @ 28 DAYS.
2. STONE - FACE STONE & PATTERN SHALL BE APPROVED BY OWNER. MINIMUM COMPRESSIVE STRENGTH = 5000 PSI.
3. DRAIN - CONTINUOUS 3/4" X 3" ANGULAR GRAVEL OR CRUSHED STONE WITH MAX. 12 PERCENT #200 SIEVE SIZE. PROVIDE WITH MIRAFIL 140N FILTER FABRIC COVER OR APPROVED EQUIVALENT. PROVIDE MIN. 2" DIAMETER WEEP HOLES @ MAX. 10' SPACING.
4. DRAIN CAP - MOIST NATIVE SOIL GRADED, COMPACTED AND SEALED TO REDUCE INFILTRATION OF RUNOFF. USE EQUIPMENT AND METHODS THAT WILL NOT DAMAGE WALLS.
5. CONTROL JOIST - SHALL BE PROVIDED @ 25' MAXIMUM SPACING.
6. BACK FILL - STONE RUBBLE MIXED WITH MOIST NATIVE SOIL AND COMPACTED SUFFICIENTLY TO PREVENT SINK HOLES AND LOW SPOTS.

SOIL DATA
 EQUIV. FLUID PRESSURE = 120 PCF
 FRICTION = 0.3
 FACTOR OF SAFETY = 1.5
 ALLOWABLE BEARING = 2500

The seal appearing on this document was authorized by Tony H. Childress, P.E. #72029 on 08/20/07. (Record copy on file)