

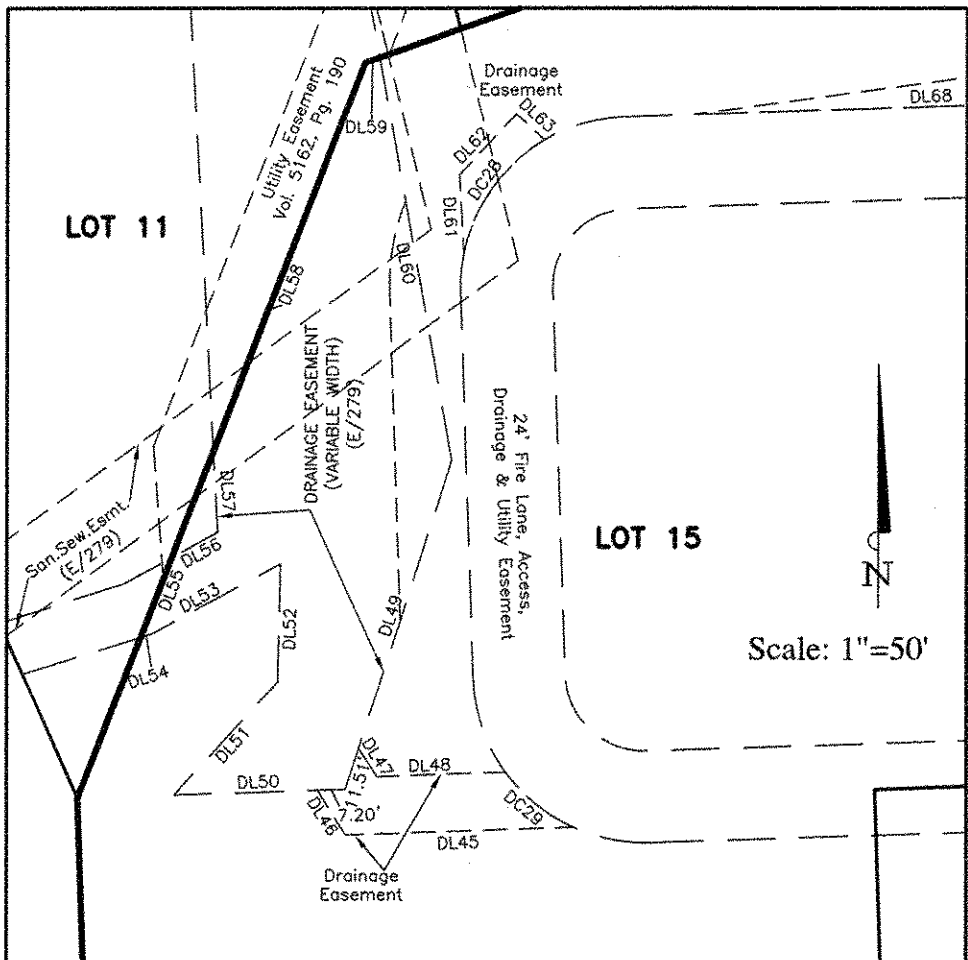
Drainage Easement Curve Table					
CURVE	LENGTH	RADIUS	DELTA	BEARING	CHORD
DC28	37.39	44.50	48°08'33"	S35°18'10"W	36.30
DC29	23.03	44.50	29°39'24"	S50°45'44"E	22.78

Drainage Easement Line Table		
LINE	LENGTH	BEARING
DL45	59.30	S88°02'53"W
DL46	13.74	N31°57'07"W
DL47	8.92	S31°57'07"E
DL48	33.50	N88°02'53"E
DL49	90.62	S17°43'57"W
DL50	44.61	S88°08'18"W
DL51	40.01	N42°14'14"E
DL52	31.16	N01°18'27"E
DL53	37.98	S61°17'11"W
DL54	3.18	S72°19'35"W
DL55	22.33	N21°09'56"E
DL56	13.56	N61°17'11"E
DL57	21.33	N03°01'13"W
DL58	109.01	N21°09'56"E
DL59	4.00	N70°39'38"E
DL60	107.10	S10°11'33"E
DL61	20.62	N03°06'13"W
DL62	21.65	N42°49'33"E
DL63	10.06	S47°10'27"E
DL64	103.44	N82°08'01"E
DL65	154.81	N65°40'28"E
DL66	11.50	S24°19'32"E
DL67	135.00	S65°40'28"W
DL68	87.33	S88°02'53"W

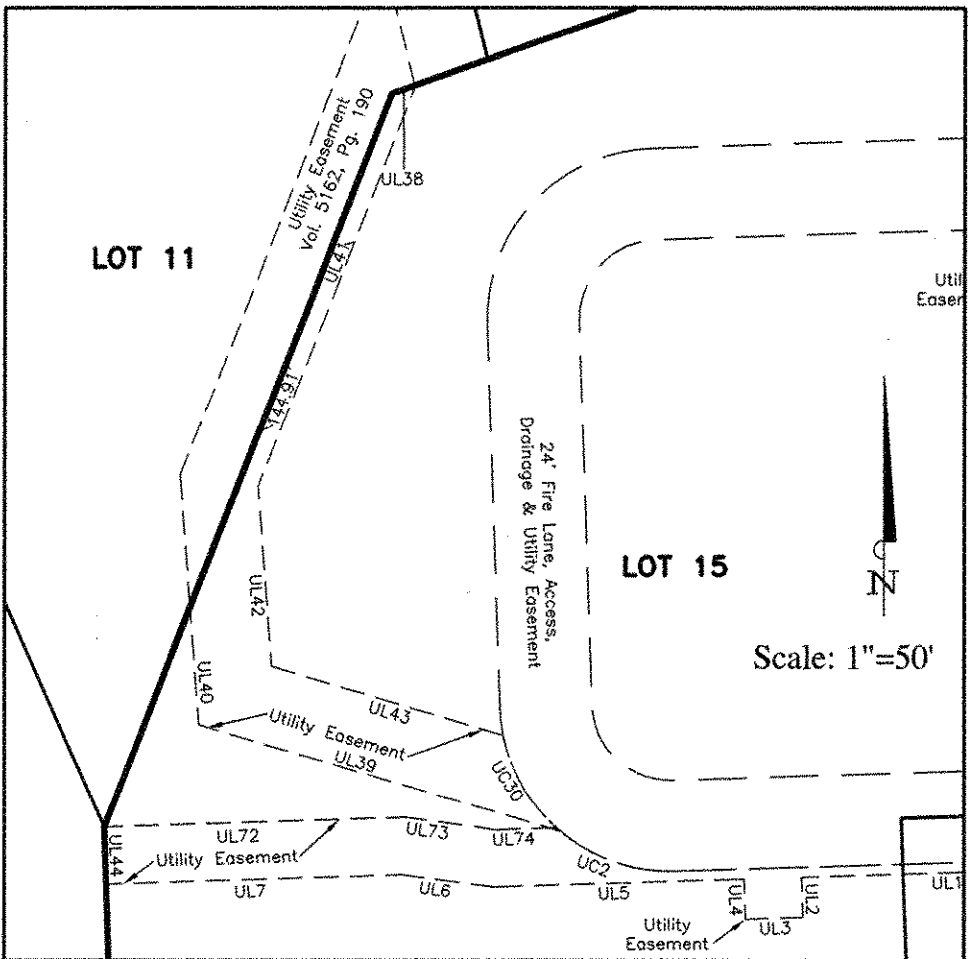
Access, Drainage & Utility Easement Curve Table					
CURVE	LENGTH	RADIUS	DELTA	BEARING	CHORD
ADUC3	32.53	20.50	90°55'14"	S43°35'55"W	29.22
ADUC4	32.20	20.50	90°00'00"	N46°51'42"W	28.99
ADUC5	34.07	20.50	95°12'41"	N66°10'13"W	30.28
ADUC6	17.74	44.50	22°50'05"	N77°38'28"E	17.52
ADUC7	69.83	44.50	89°54'35"	S46°54'25"E	62.88
ADUC8	69.90	44.50	90°00'00"	S43°02'53"W	62.93
ADUC9	39.24	100.50	22°22'25"	N76°51'41"E	39.00
ADUC10	44.20	44.50	56°54'39"	S85°52'12"E	42.41
ADUC11	32.20	20.50	89°59'33"	N46°57'20"W	28.99
ADUC12	24.89	20.50	69°34'33"	N32°49'43"E	23.39
ADUC13	18.30	20.50	51°09'00"	S82°59'23"E	17.70
ADUC14	32.21	20.50	90°00'41"	S82°59'47"W	28.99
ADUC15	27.43	20.50	76°40'28"	S56°54'47"E	25.43
ADUC16	23.81	20.50	66°32'15"	N32°24'21"E	22.49
ADUC17	8.17	20.50	22°50'05"	N77°38'28"E	8.12
ADUC18	32.17	20.50	89°54'35"	S46°54'25"E	28.97
ADUC19	32.20	20.50	90°00'00"	S43°02'53"W	28.99
ADUC20	48.62	124.50	22°22'25"	N76°51'41"E	48.31
ADUC21	34.26	20.50	95°44'59"	N66°27'03"W	30.41
ADUC22	30.34	20.50	84°48'00"	N23°49'27"E	27.65
ADUC23	40.40	20.50	112°54'46"	N57°19'10"W	34.17
ADUC24	32.17	20.50	89°55'19"	N44°05'52"E	28.97
ADUC25	31.84	20.50	88°58'54"	N46°27'01"W	28.73
ADUC26	32.24	20.50	90°05'51"	N43°05'22"E	29.02
ADUC27	40.60	20.50	113°27'45"	N57°35'59"W	34.28

Utility Easement Curve Table					
CURVE	LENGTH	RADIUS	DELTA	BEARING	CHORD
UC1	10.46	20.50	29°13'27"	S77°14'59"E	10.34
UC2	34.03	44.50	43°49'00"	N69°57'12"W	33.21
UC30	29.96	44.50	38°34'18"	S30°32'11"E	29.39

Utility Easement Line Table		
LINE	LENGTH	BEARING
UL1	68.21	S88°08'18"W
UL2	10.50	S01°51'42"E
UL3	15.00	S88°08'18"W
UL4	10.50	N01°51'42"W
UL5	65.48	S88°08'18"W
UL6	23.91	N82°13'57"W
UL7	77.03	S88°08'18"W
UL8	18.10	S88°02'53"W
UL9	13.96	N01°57'07"W
UL35	9.80	S46°57'34"E
UL36	15.00	S43°02'26"W
UL37	8.76	N46°57'34"W
UL38	6.56	N70°39'38"E
UL39	98.27	N73°24'37"W
UL40	30.65	N04°17'31"W
UL41	113.14	S21°09'29"W
UL42	47.26	S04°17'31"E
UL43	62.95	S73°24'37"E
UL44	15.00	N01°57'07"W
UL69	20.88	S24°19'32"E
UL70	15.00	S65°40'28"W
UL71	11.61	N24°19'32"W
UL72	78.32	N88°08'18"E
UL73	23.91	S82°13'57"E
UL74	15.74	N88°08'18"E



Access, Drainage & Utility Easement Line Table		
LINE	LENGTH	BEARING
ADUL8	2.07	S88°08'18"W
ADUL9	154.31	S66°13'27"W
ADUL10	142.34	S89°03'32"W
ADUL11	90.87	S88°08'18"W
ADUL12	101.01	N01°57'07"W
ADUL13	105.13	N88°02'53"E
ADUL14	252.22	N65°40'28"E
ADUL15	22.64	S01°51'42"E
ADUL16	23.00	N01°51'42"W
ADUL17	22.32	N71°26'08"E
ADUL18	24.00	S18°33'52"E
ADUL19	7.94	S71°26'08"W
ADUL20	145.68	S18°34'33"E
ADUL21	12.98	N84°44'59"E
ADUL22	63.33	S18°33'52"E
ADUL23	12.05	S66°13'27"E
ADUL24	21.23	N18°33'52"W
ADUL25	21.93	S88°08'18"W
ADUL26	119.66	S66°13'27"W
ADUL27	198.24	S89°03'32"W
ADUL28	133.85	S88°08'18"W
ADUL29	101.01	N01°57'07"W
ADUL30	105.13	N88°02'53"E
ADUL31	252.22	N65°40'28"E
ADUL32	174.45	S18°34'33"E



REPLAT
Lots 15 - 17, Block A
La Jolla Pointe Addition, Phase 2

Being all of
Lots 12 - 14, Block A
La Jolla Pointe Addition, Phase 2
Cabinet G, Slide 131-132

4.497 Acres
located in
City of Rockwall
Rockwall County, Texas

— FEBRUARY 2008 —
SHEET 3 OF 3

Allen & Ridinger Consulting, Inc.
285 W. Southwest Parkway
Lewisville, Texas 75067
Tel. No. (972) 353-8000
Fax No. (972) 353-8011

OWNER / DEVELOPER
N3 Development, Ltd.
505 Pecan Street
Suite 201
Fort Worth, Texas 76102
817.348.8748

ARTHUR SURVEYING COMPANY, INC.
Registered Professional Land Surveyors
220 Elm Street - P. O. Box 54
Lewisville, Texas 75067
Office: (972) 221-9439 Fax: (972) 221-4675

DRAWN BY: JC DATE: 05/02/07 SCALE: 1"=50' CHECKED BY: ASC NO.: 260456

G-260