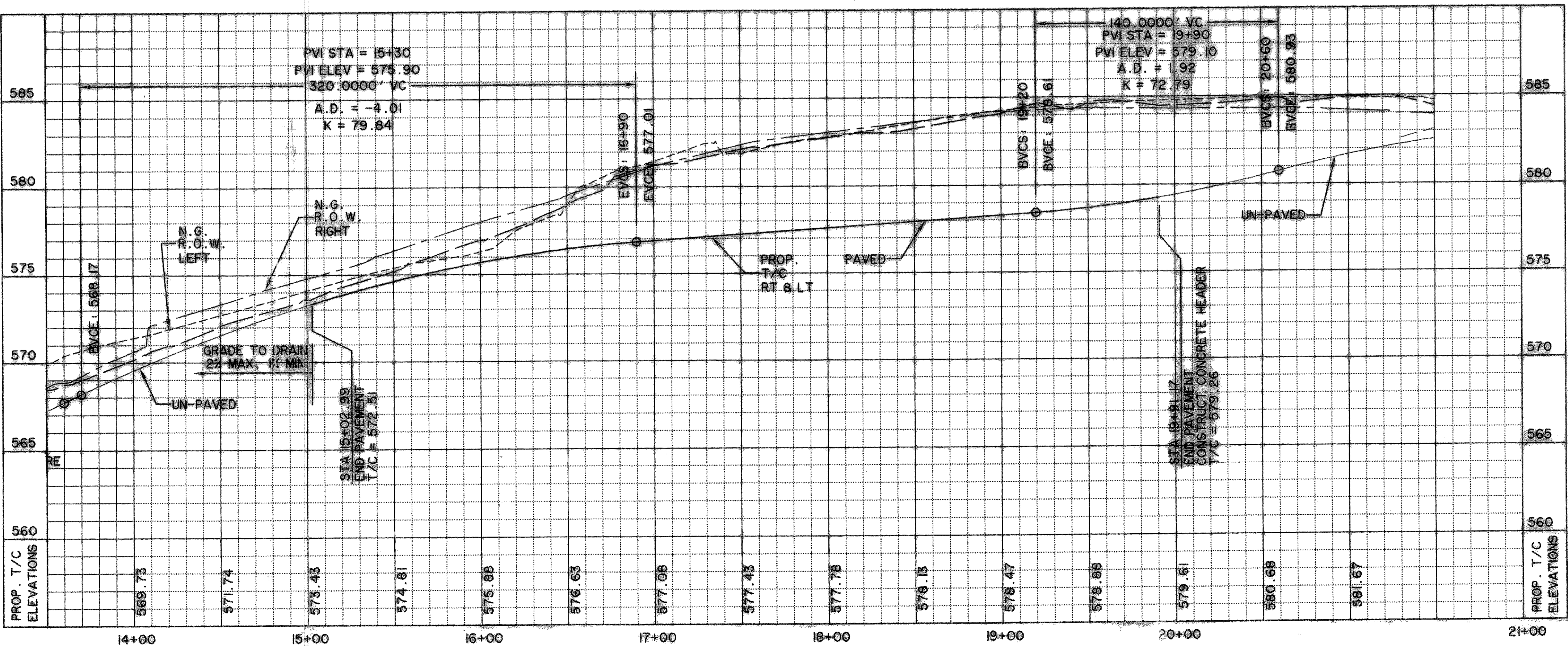
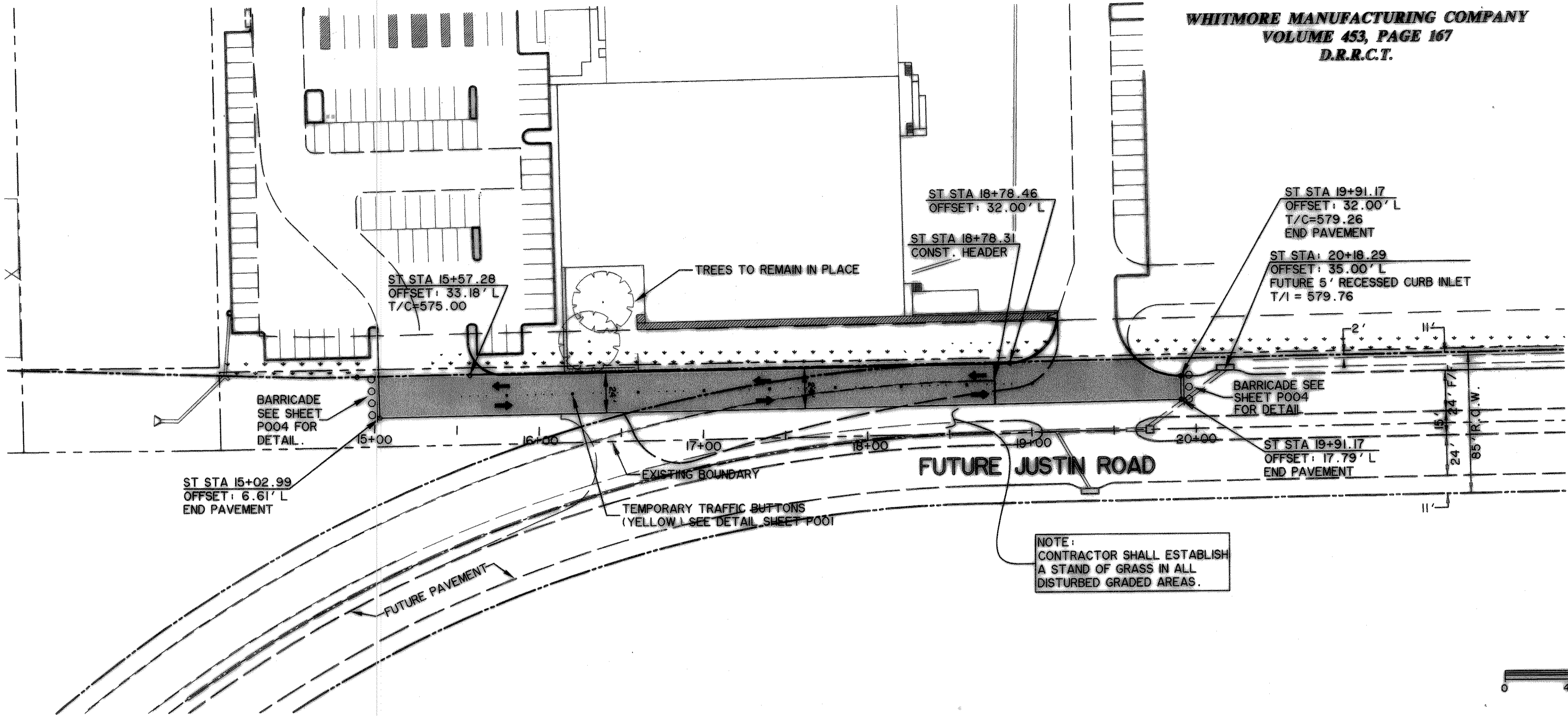


WHITMORE MANUFACTURING COMPANY
VOLUME 453, PAGE 167
D.R.R.C.T.

LEGEND

- * 4200 PSI. CONC. PAVING
- SIDEWALK CONCRETE
- LANDSCAPING
- DIRECTION OF FLOW
- RIGHT-OF-WAY
- EXISTING BOUNDARY
- BARRIER FREE RAMP
- FIRE LANE

* NOTE: MIN 6.5 SACK IN PAVEMENT



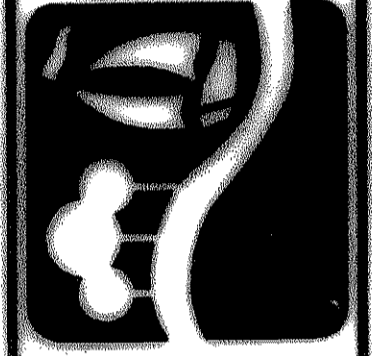
BENCHMARKS:

"B" CUT IN THE INLET LOCATED AT THE SOUTHWEST CORNER OF THE PARKING LOT, SOUTH OF THE ENTRANCE.
ELEVATION 573.73

"C" CUT IN THE CURB LOCATED AT THE SOUTHEAST CORNER OF THE TRUCK ENTRANCE, OPPOSITE OF THE FIRE HYDRANT.
ELEVATION 577.73

RECORD DRAWING
03/13/07

PREPARED BY:
VIA WIER & ASSOCIATES, INC.
ENGINEERS SURVEYORS LAND PLANNERS
4300 BELTWAY PLACE SUITE 130 ARLINGTON, TEXAS 76018 METRO (817)467-7700
1380 U.S. HIGHWAY 287 A, SUITE 101 WAXSHIELD, TEXAS 76063 METRO (817)717-8700
6849 ELM STREET FRIEDRICH, TEXAS 75034 METRO (214)387-8800
www.via-wier.com



**CITY OF ROCKWALL
WHITMORE'S
EXPANSION**

**PAVING
PLAN & PROFILE**



COPYRIGHT ©
WIER & ASSOCIATES, INC.
LAST SHEET EDIT
DATE: 03/13/2007
WA# 04124.02
SHEET NO. P102