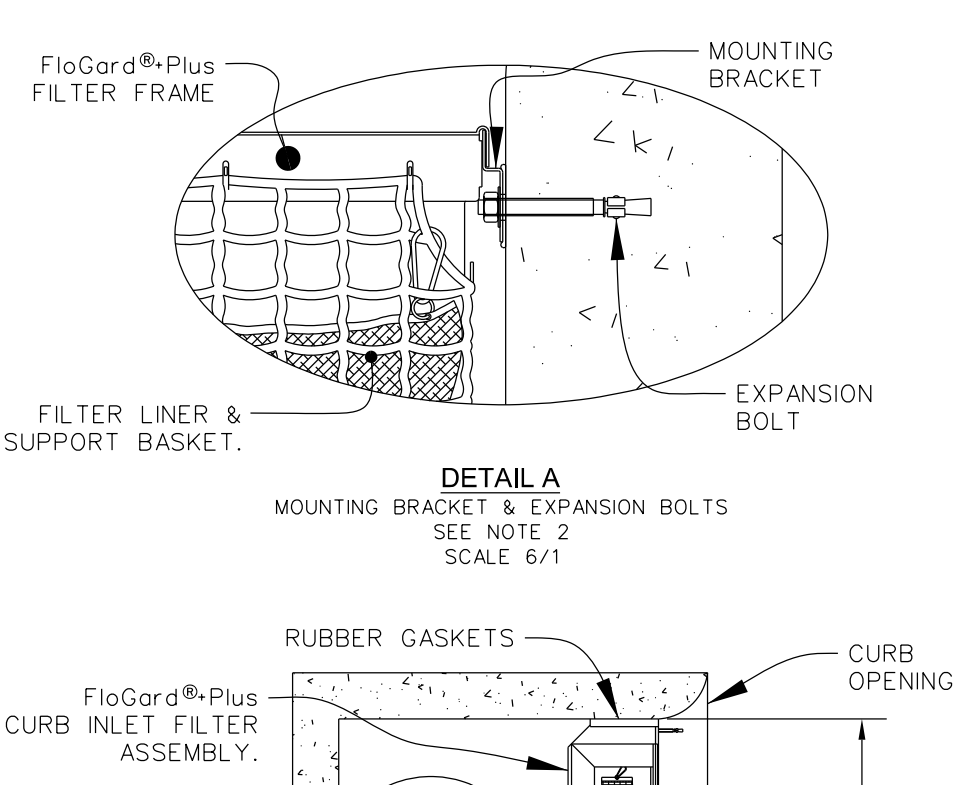
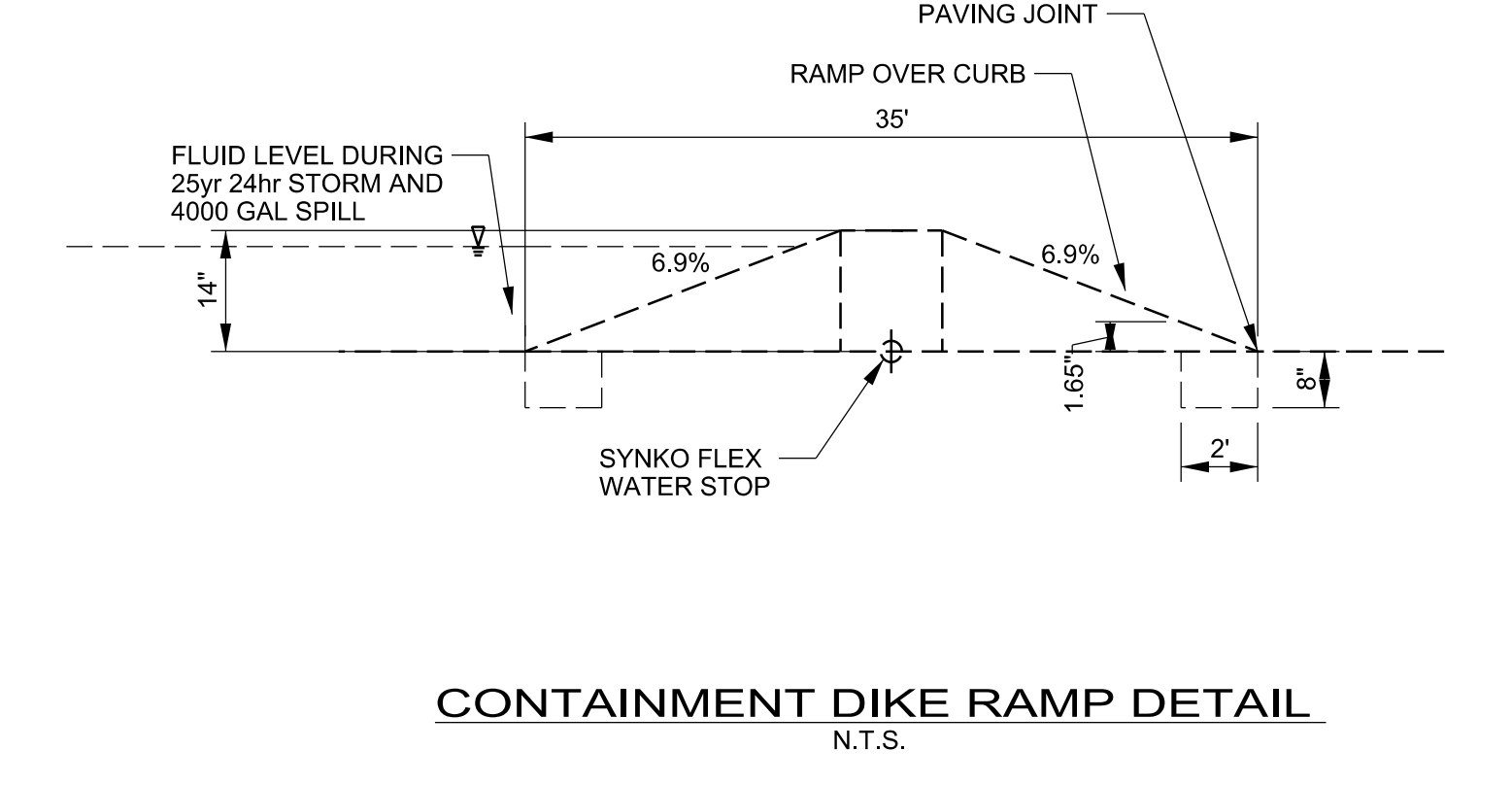
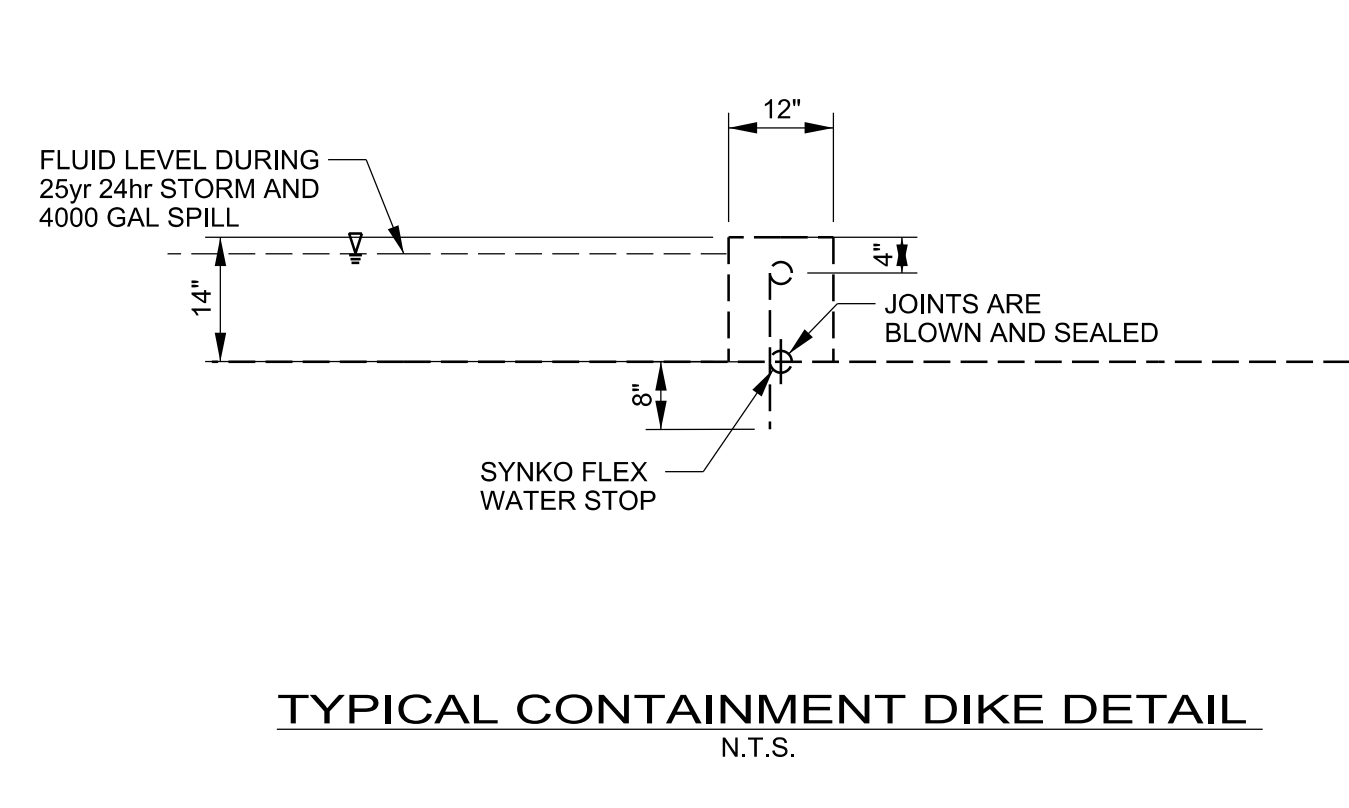
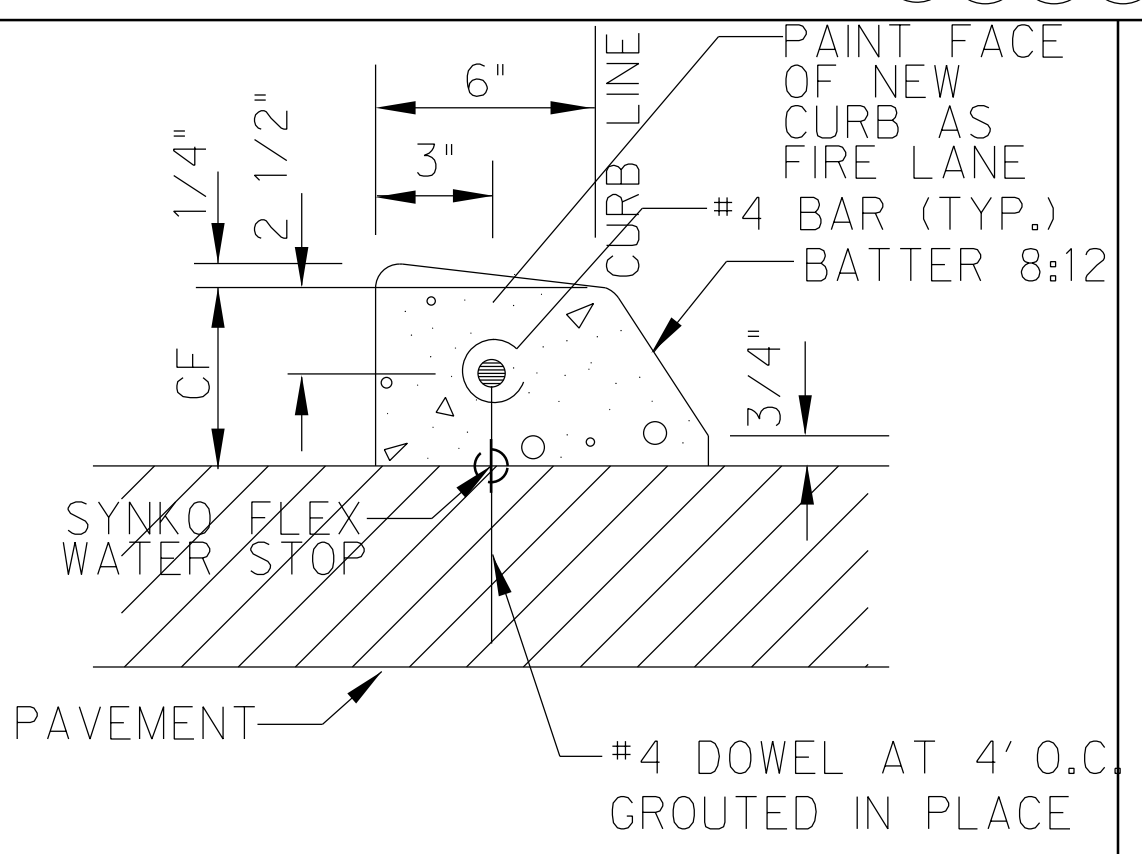
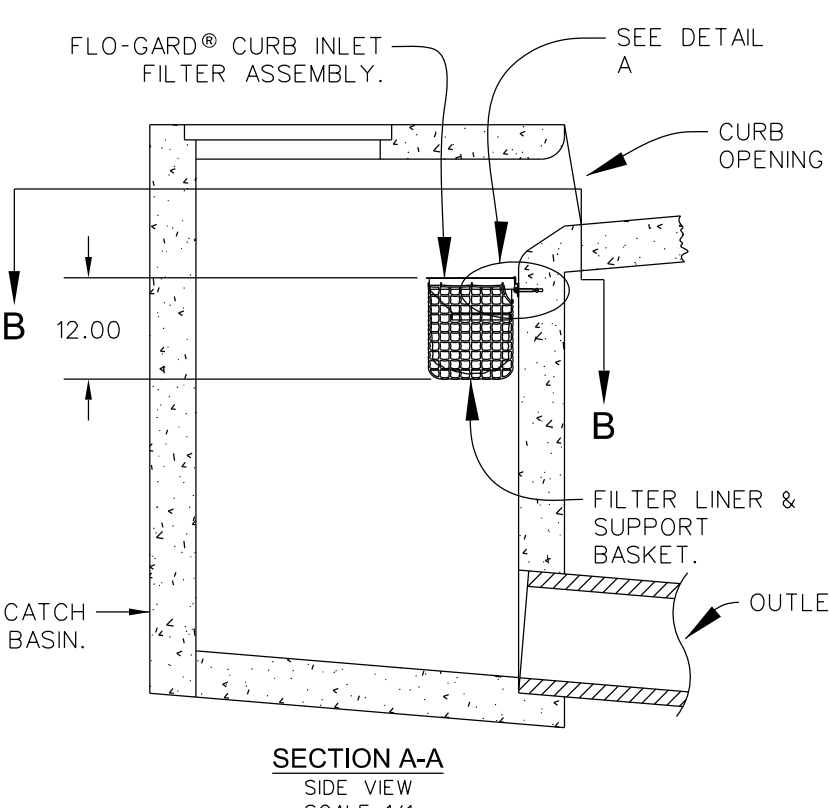
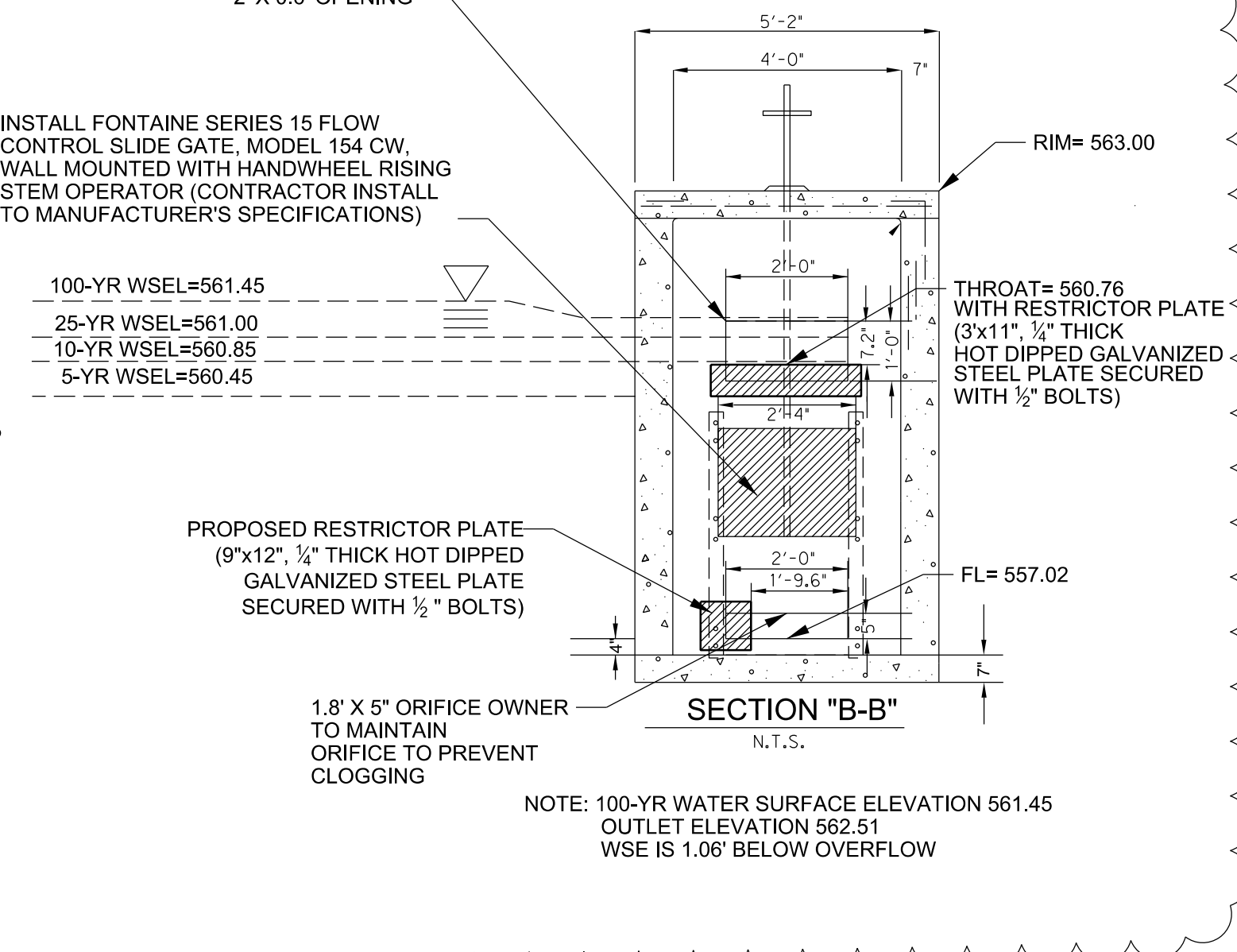
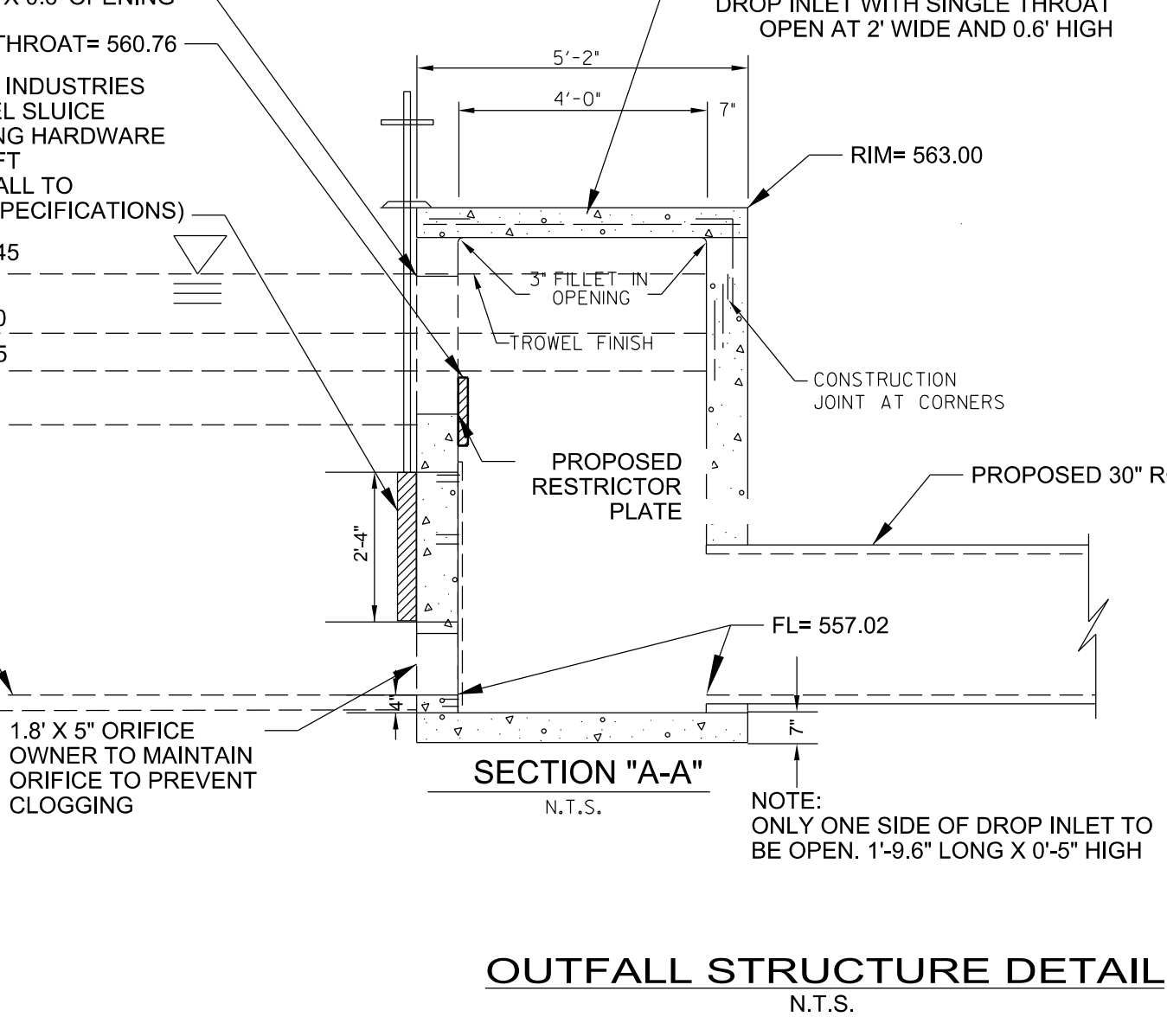
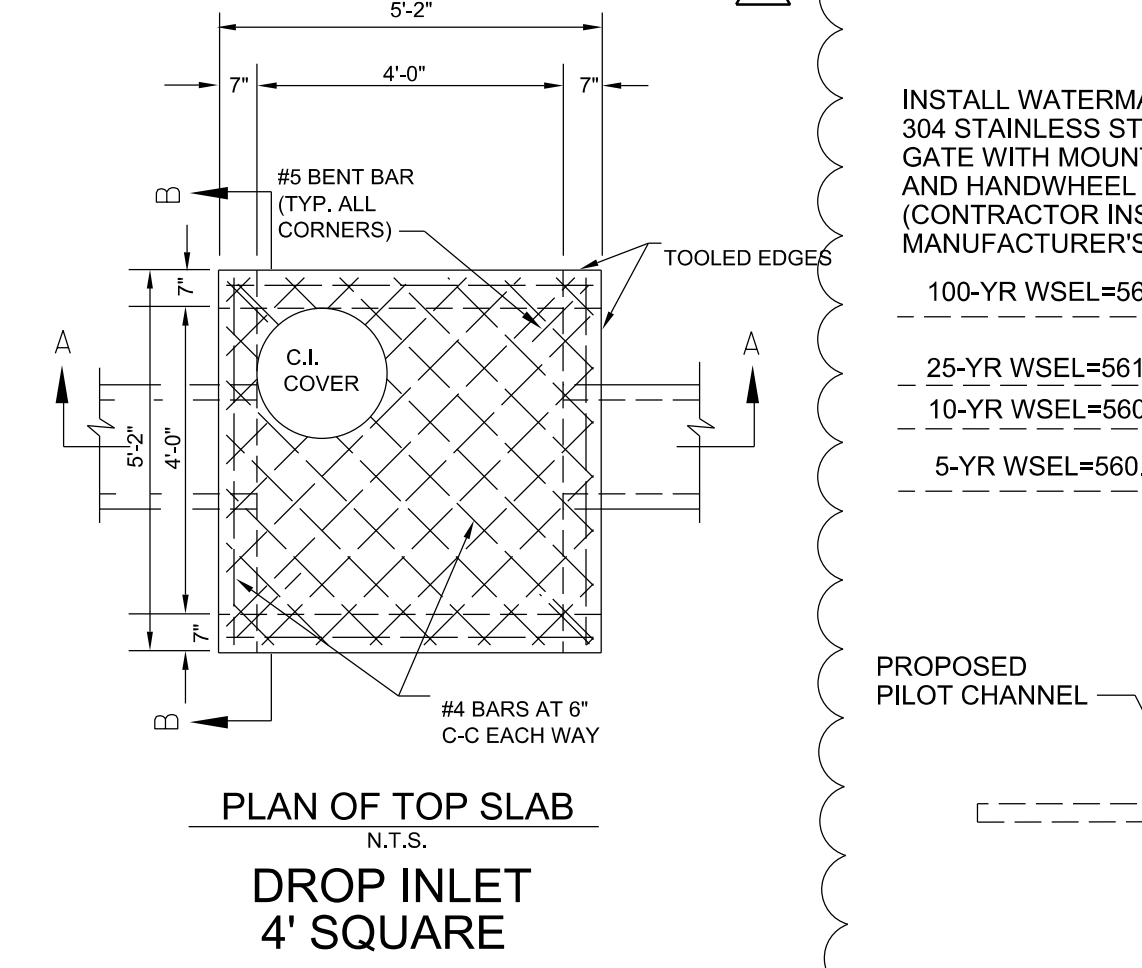


FGP-0002

SPECIFIER CHART					
MODEL NO.	Curb Opening Width - W -	Storage Capacity - Cu. Ft. -	Filtered Flow Rate - GPM/CFS -	Bypass Flow Rate - GPM/CFS -	
FGP-24CI	2.0' (24")	.95	338 / 7.5	2,513 / 5.6	
FGP-30CI	2.5' (30")	1.20	450 / 1.00	3,008 / 6.7	
FGP-36CI	3.0' (36")	1.50	563 / 1.25	3,547 / 7.9	
FGP-42CI	3.5' (42")	1.80	675 / 1.50	3,951 / 8.8	
FGP-48CI	4.0' (48")	2.10	768 / 1.76	4,445 / 9.9	
FGP-50CI	5.0' (60")	2.40	900 / 2.00	5,208 / 11.6	
FGP-60CI	6.0' (72")	3.05	1,126 / 2.51	6,196 / 13.8	
FGP-70CI	7.0' (84")	3.65	1,350 / 3.01	7,139 / 15.9	
FGP-80CI	8.0' (96")	4.25	1,576 / 3.51	8,082 / 18.0	
FGP-100CI	10.0' (120")	4.85	1,800 / 4.01	9,833 / 21.9	
FGP-120CI	12.0' (144")	6.10	2,252 / 5.02	11,764 / 26.2	
FGP-140CI	14.0' (168")	7.30	2,700 / 6.02	13,515 / 30.1	
FGP-160CI	16.0' (192")	8.55	3,152 / 7.02	15,446 / 34.4	
FGP-180CI	18.0' (216")	9.45	3,490 / 7.78	17,152 / 38.2	
FGP-210CI	21.0' (252")	10.95	4,050 / 9.02	19,891 / 44.3	
FGP-280CI	28.0' (336")	14.60	5,400 / 12.03	26,311 / 58.6	



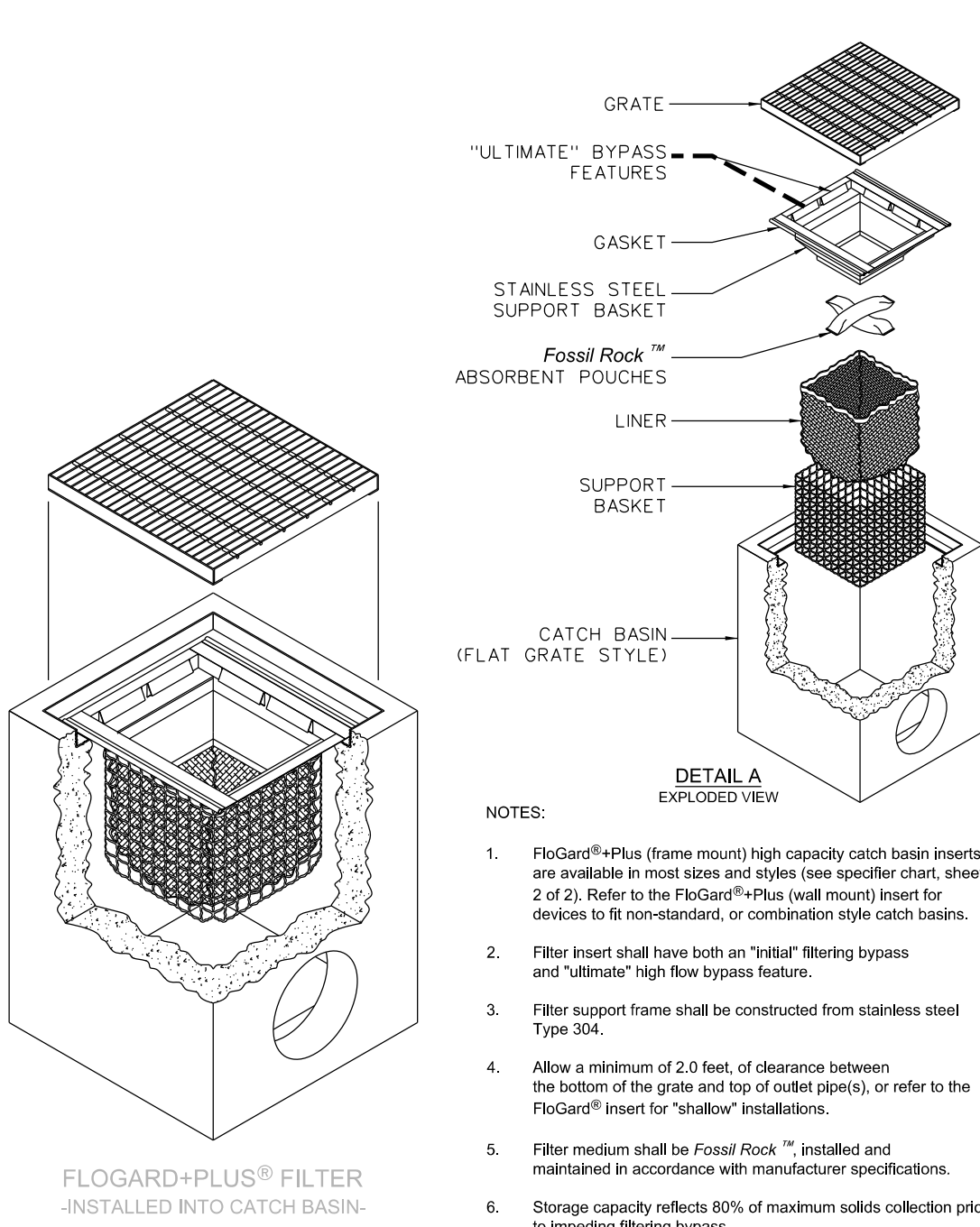
- NOTES:
- FloGard[®]+PLUS filter inserts shall be installed across the entire width of curb opening. Storage capacity and clean flow rates are based on full width installation.
 - Filter insert shall be attached to the catch basin with stainless steel expansion anchor bolts & washers (3/8" x 2-1/2" minimum length.) See detail A.
 - FloGard[®]+PLUS filter inserts are designed with a debris trap/energy dissipator for the retention of floatables and collected sediments.
 - Filter support frame shall be constructed from stainless steel Type 304.
 - Filter liner shall be constructed from durable polypropylene, woven, monofilament, geotextile. Filter liner shall not allow the retention of water between storm events.
 - Filter inserts are supplied with "clip-in" filter pouches utilizing FOSSIL ROCK[™] filter medium for the collection and retention of petroleum hydrocarbons (oils & greases).
 - FloGard[®]+PLUS filter inserts and FOSSIL ROCK[™] filter medium pouches must be maintained in accordance with manufacturer recommendations.
 - FloGard[®]+PLUS filter inserts are available in standard lengths of 24", 30", 35", 42" & 48" and may be installed in various length combinations (end to end) to fit length of noted catch basin.
 - Clean flow rates are "calculated" based on liner flow rate of 140 gallons per minute per square foot of material, a factor of .50 has been applied to allow for anticipated sediment & debris loading. An additional safety factor of between .25 & .50 may be applied to allow for site specific sediment loading.
 - Storage capacity reflects maximum solids collection prior to impeding "initial" filtering bypass. The "ultimate" high-flow bypass will not become impeded due to maximum solids loading.



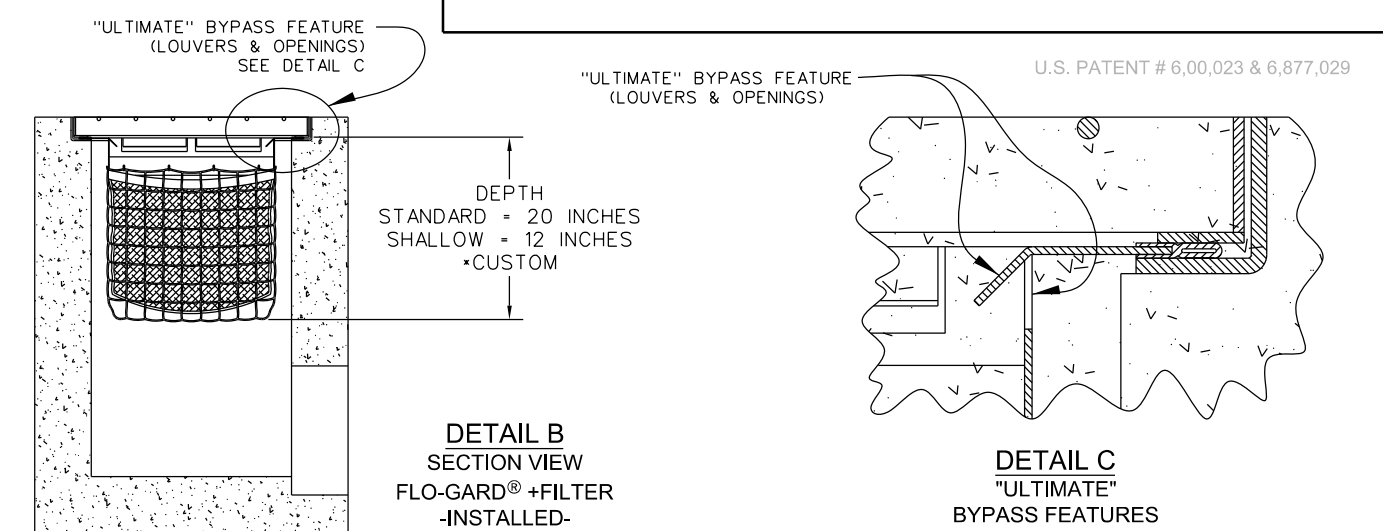
TITLE
FloGard[®]+PLUS
CATCH BASIN FILTER INSERT
(Curb Inlet Style)

KriStar Enterprises, Inc.
360 Sutton Place, Santa Rosa, CA 95407
Ph: 800.579.8819, Fax: 707.524.8186, www.kristar.com
DRAWING NO. FGP-0002
REV D 0059 JPR 12/30/08 DATE JPR 11/3/06 SHEET 1 OF 1

TITLE
DOWELED CURB
N.T.S.



- NOTES:
- FloGard[®]+PLUS (frame mount) high capacity catch basin inserts are available in most sizes and styles (see specifier chart, sheet 2 of 2). Refer to the FloGard[®]+PLUS (wall mount) insert for devices to fit nonstandard, or combination style catch basins.
 - Filter insert shall have both an "initial" filtering bypass and "ultimate" high flow bypass feature.
 - Filter support frame shall be constructed from stainless steel Type 304.
 - Allow a minimum of 2.0 feet of clearance between the bottom of the grate and top of outlet pipe(s), or refer to the FloGard[®] insert for "shallow" installations.
 - Filter medium shall be Fossil Rock[™] installed and maintained in accordance with manufacturer specifications.
 - Storage capacity reflects 80% of maximum solids collection prior to impeding filtering bypass.
 - Filtered flow rate includes a safety factor of two.



* MANY OTHER STANDARD & CUSTOM SIZES & DEPTHS AVAILABLE UPON REQUEST.

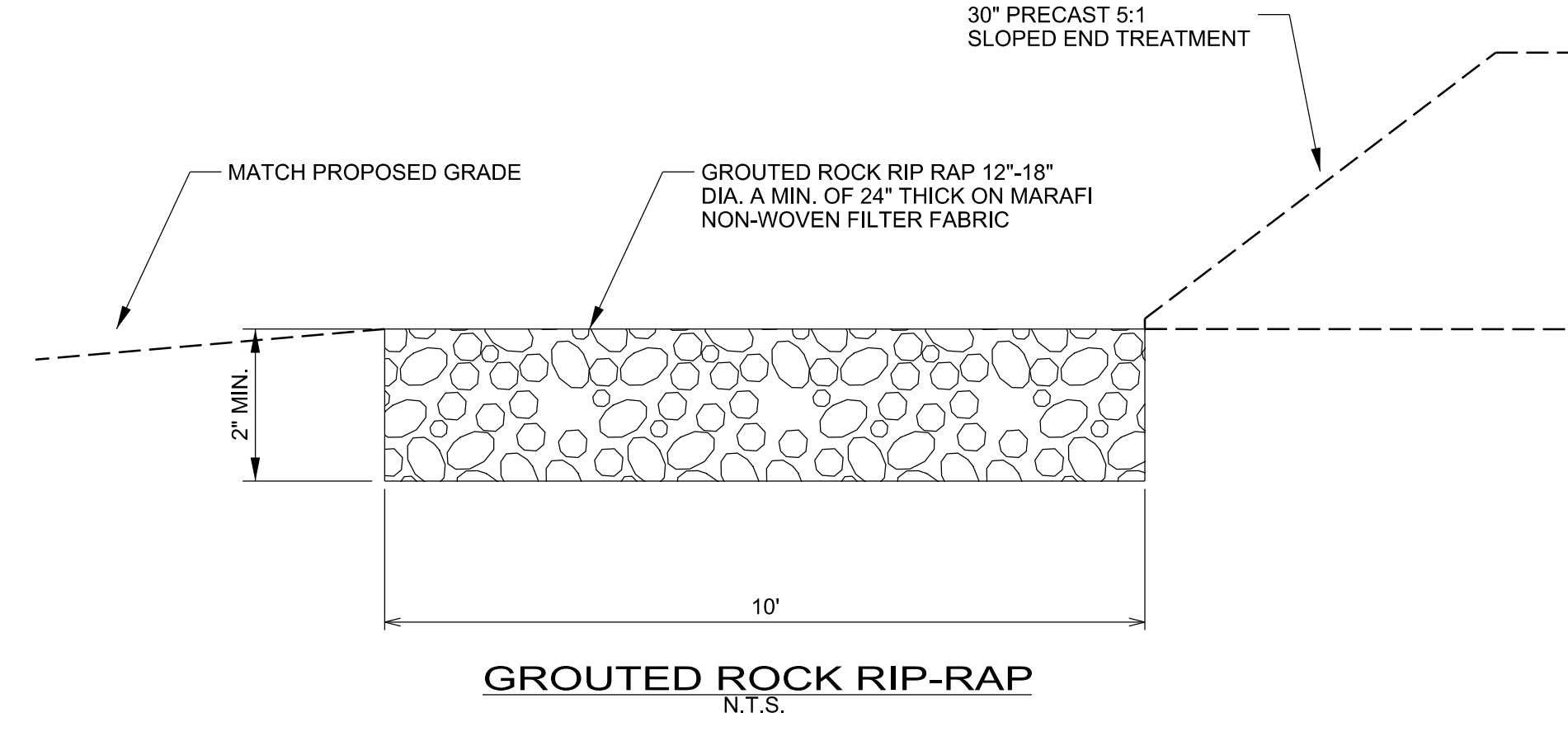
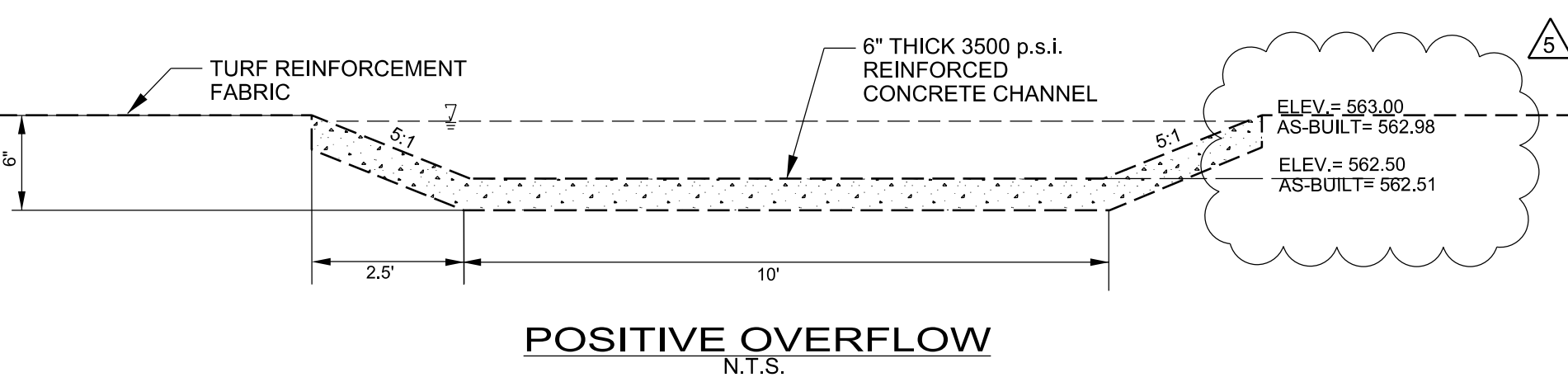
SPECIFIER CHART									
MODEL NO.	STANDARD & SHALLOW DEPTH (Data in those columns is the same for both STANDARD & SHALLOW versions)			STANDARD DEPTH -20 Inches-			SHALLOW DEPTH -12 Inches-		
	INLET ID Inside Dimension (inch x inch)	GRATE OD Outside Dimension (inch x inch)	TOTAL BYPASS CAPACITY (cu. ft.)	SOLIDS STORAGE CAPACITY (cu. ft.)	FILTERED FLOW (cu. ft. / sec.)	SHALLOW DEPTH (cu. ft.)	SOLIDS STORAGE CAPACITY (cu. ft.)	FILTERED FLOW (cu. ft. / sec.)	
FGP-12F	12 X 12	12 X 14	2.8	0.3	0.4	FGP-12F8	.15	.25	
FGP-1530F	15 X 30	15 X 35	6.9	2.3	1.6	FGP-1530F8	1.3	.9	
FGP-16F	16 X 16	16 X 19	4.7	0.8	0.7	FGP-16F8	.45	.4	
FGP-1624F	16 X 24	16 X 26	5.0	1.5	1.2	FGP-1624F8	.85	.7	
FGP-18F	18 X 18	18 X 20	4.7	0.8	0.7	FGP-18F8	.45	.4	
FGP-1820F	16 X 19	18 X 21	5.9	2.1	1.4	FGP-1820F8	1.2	.8	
FGP-1824F	16 X 22	18 X 24	5.0	1.5	1.2	FGP-1824F8	.85	.7	
FGP-1836F	18 X 36	18 X 40	6.9	2.3	1.6	FGP-1836F8	1.3	.9	
FGP-2024F	18 X 22	20 X 24	5.9	1.2	1.0	FGP-2024F8	.7	.55	
FGP-21F	22 X 22	22 X 24	6.1	2.2	1.5	FGP-21F8	1.25	.85	
FGP-2142F	21 X 40	24 X 40	9.1	4.3	2.4	FGP-2142F8	2.45	1.35	
FGP-2148F	19 X 46	22 X 48	9.8	4.7	2.6	FGP-2148F8	2.7	1.5	
FGP-24F	24 X 24	24 X 27	6.1	2.2	1.5	FGP-24F8	1.25	.85	
FGP-2430F	24 X 30	26 X 30	7.0	2.9	1.8	FGP-2430F8	1.6	1.05	
FGP-2436F	24 X 36	24 X 40	8.0	3.4	2.0	FGP-2436F8	1.95	1.15	
FGP-2448F	24 X 48	26 X 48	9.3	4.4	2.4	FGP-2448F8	2.5	1.35	
FGP-28F	28 X 28	32 X 32	6.3	2.2	1.5	FGP-28F8	1.25	.85	
FGP-2440F	24 X 36	28 X 40	8.3	4.2	2.3	FGP-2440F8	2.4	1.3	
FGP-30F	30 X 30	30 X 34	8.1	3.6	2.0	FGP-30F8	2.05	1.15	
FGP-36F	36 X 36	36 X 40	9.1	4.6	2.4	FGP-36F8	2.65	1.35	
FGP-3648F	36 X 48	40 X 48	11.5	6.8	3.2	FGP-3648F8	3.9	1.85	
FGP-48F	48 X 48	48 X 54	13.2	9.5	3.9	FGP-48F8	5.45	2.25	
FGP-SD24F	24 X 24	28 X 28	6.1	2.2	1.5	FGP-SD24F8	1.25	.85	

TITLE
FloGard[®]+PLUS
CATCH BASIN FILTER INSERT
(Flat Grated Inlet Style)

KriStar Enterprises, Inc.
360 Sutton Place, Santa Rosa, CA 95407
Ph: 800.579.8819, Fax: 707.524.8186, www.kristar.com
DRAWING NO. FGP-0001
REV E 0059 JPR 12/11/11 DATE JPR 11/3/06 SHEET 2 OF 2

TITLE
FloGard[®]+PLUS
CATCH BASIN FILTER INSERT
(Flat Grated Inlet Style)

KriStar Enterprises, Inc.
360 Sutton Place, Santa Rosa, CA 95407
Ph: 800.579.8819, Fax: 707.524.8186, www.kristar.com
DRAWING NO. FGP-0001
REV E 0059 JPR 12/11/11 DATE JPR 11/3/06 SHEET 2 OF 2



THIS IS NOT A STORM WATER POLLUTION PREVENTION PLAN. THE CONTRACTOR MUST PREPARE ALL RELEVANT DOCUMENTS INCLUDING HIS OPERATION SPECIFIC INFORMATION PER THE TCEQ TPDES PERMIT NO. TXR150000, INCLUDING ALL DOCUMENTATION & CERTIFICATIONS AS REQUIRED BY THE PERMIT.

ALL RESPONSIBILITY FOR ADEQUACY OF DESIGN REMAINS WITH THE DESIGN ENGINEER. THE CITY OF ROCKWALL, IN REVIEWING AND RELEASING PLANS FOR CONSTRUCTION, ASSUMES NO RESPONSIBILITY FOR ADEQUACY OR ACCURACY OF DESIGN.

WHITMORE MANUFACTURING
STORM WATER COLLECTION AND TREATMENT EVALUATION
CITY OF ROCKWALL, TEXAS

HALFF
1301 NORTH BOWSER ROAD
RICHARDSON, TEXAS 75081-2275
TEL: (214) 796-9000
FAX: (214) 796-9005

Revision No.	Date	Description
1	3-6-2013	Revised as shown
2	4-2-2013	Revised as shown
3	11-4-2013	As Built Revision

RECORD DRAWING SUBMITTAL
NOV. 04, 2013
This Record Drawing is based upon information provided by Hill & Wilkinson General Contractors, Halff Associates, Inc. survey dated 9-12-2013 and final visual observation, Texas Board of Professional Engineers-Firm #F-312.
DATE: NOV/04/2013
TIME: 11:30 AM

Project No.: 29023
Issued: JUNE, 2013
Drawn By: CAD
Checked By: DL
Scale: AS NOTED
Sheet Title

DETAILS
C3.04
Sheet Number