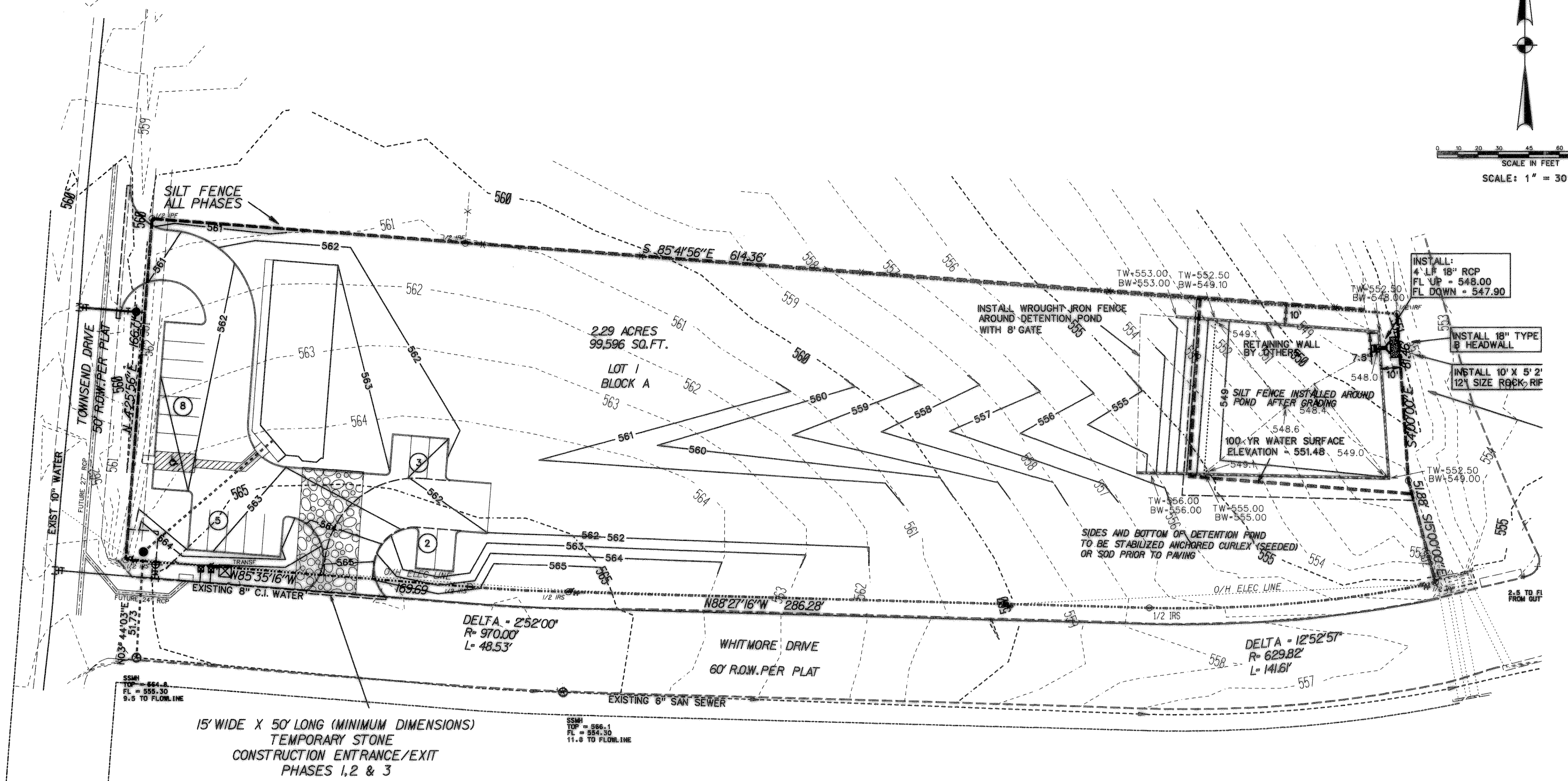
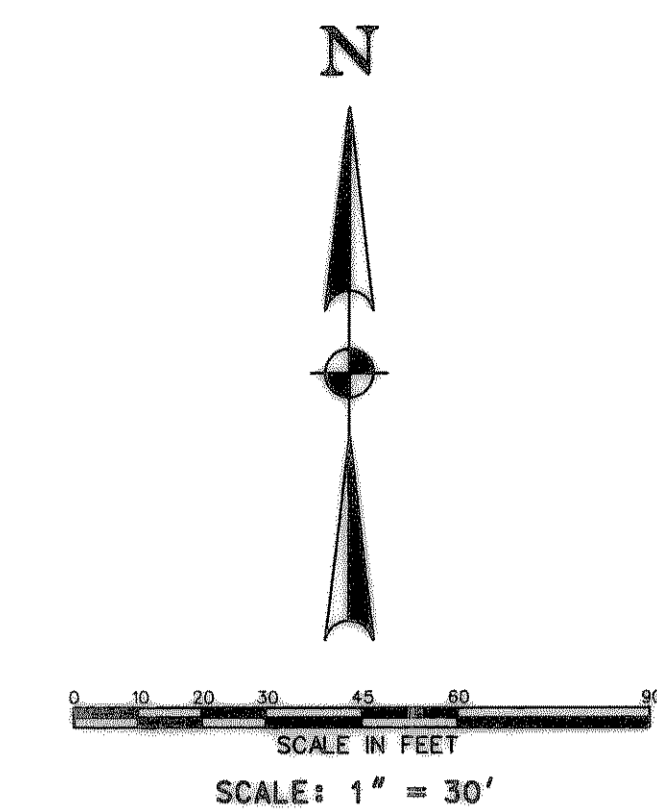


VICINITY MAP
NOT TO SCALE



LEGEND:

- SILT FENCE
- INLET PROTECTION
- [Pattern] CONSTRUCTION ENTRANCE/EXIT
- [Symbol] STONE OVERFLOW STRUCTURE

BMP MAINTENANCE SCHEDULE		
BMP	MAINTENANCE FREQUENCY	BY:
SILT FENCE	WEEKLY/AFTER RAIN	CONTRACTOR
INLET PROTECTION	WEEKLY/AFTER RAIN	CONTRACTOR
CONST ENTRANCE	WEEKLY/AFTER RAIN	CONTRACTOR

EROSION CONTROL CONSTRUCTION PHASING:

- PHASE 1 - TOP SOIL REMOVAL AND ROUGH GRADING
- PHASE 2 - UTILITY INSTALLATION
- PHASE 3 - BUILDING CONSTRUCTION
- PHASE 4 - PAVING
- PHASE 5 - LANDSCAPE AND IRRIGATION

GENERAL NOTES:

1. EROSION CONTROL DEVICES AS SHOWN ON THE EROSION CONTROL PLAN FOR THE PROJECT SHALL BE INSTALLED PRIOR TO THE START OF LAND DISTURBING ACTIVITIES ON THE PROJECT.
2. ALL EROSION CONTROL DEVICES ARE TO BE INSTALLED IN ACCORDANCE WITH THE APPROVED PLANS AND SPECIFICATIONS FOR THE PROJECT. CHANGES ARE TO BE APPROVED BEFORE CONSTRUCTION BY THE DESIGN ENGINEER AND THE CITY OF ALLEN ENGINEERING DIVISION.
3. IF THE EROSION CONTROL PLAN AS APPROVED CANNOT CONTROL EROSION AND OFF-SITE SEDIMENTATION FROM THE PROJECT THE EROSION CONTROL PLAN WILL BE REQUIRED TO BE REVISED AND/OR ADDITIONAL EROSION CONTROL DEVICES WILL BE REQUIRED ON SITE.
4. IF OFF-SITE SOIL BORROW OR SPOIL SITES ARE USED IN CONJUNCTION WITH THIS PROJECT, THIS INFORMATION SHALL BE DISCLOSED AND SHOWN ON THE EROSION CONTROL PLAN. OFF-SITE BORROW AND SPOIL AREAS ARE CONSIDERED A PART OF THE PROJECT SITE AND THEREFORE SHALL COMPLY WITH THE CITY OF ROCKWALL EROSION CONTROL REQUIREMENTS. THESE AREAS SHALL BE STABILIZED WITH PERMANENT GROUND COVER PRIOR TO FINAL APPROVAL OF THE PROJECT.
5. TOTAL PROJECT AREA = 2.29 ACRES ON-SITE
ON-SITE DISTURBED AREA = 1.20 ACRES, OFFSITE AREA = 0.00 ACRES
UNDISTURBED AREA = 1.09 ACRES TOTAL DISTURBED AREA = 1.20 ACRES
6. SEE SHEET C2 FOR PROPOSED UTILITIES
7. SEE SHEET C3 FOR DRAINAGE CALCULATIONS AND GRADING IMPROVEMENTS
8. SEE CITY OF ROCKWALL'S BMP MANUAL FOR BMP DETAILS
9. CONTRACTOR SHALL HAVE A COPY OF THE CITY OF ALLEN EROSION AND SEDIMENT CONTROL MANUAL ONSITE AT ALL TIMES.
10. CONTRACTOR SHALL BE RESPONSIBLE FOR SUBMITTAL OF N.O.I., N.O.T. AND ANY ADDITIONAL INFORMATION REQUIRED BY THE E.P.A. CONTRACTOR SHALL COMPLY WITH ALL E.P.A. STORMWATER POLLUTION PREVENTION REQUIREMENTS.

EROSION CONTROL CONSTRUCTION PLAN		
	INSTALLATION:	REMOVAL:
CONSTRUCTION ENTRANCE	PRIOR TO STARTING	AFTER PAVEMENT PLACEMENT
SILT FENCE	PRIOR TO STARTING	PORTION TO BE REMOVED AT END OF PAVING AFTER ESTABLISHING GRASS COVER
INLET PROTECTION	AFTER INLET INSTALLATION	PORTION TO BE REMOVED AFTER SITE GRADING AROUND EXIST INLET AFTER FINAL ACCEPTANCE

RECORD DRAWING 10-29-07

Professional Engineer Seal for Stephen A. Helmsberger, State of Texas, No. 82944, dated 10/21/07.

Professional Engineer Seal for Stephen A. Helmsberger, State of Texas, No. 82944, dated 5/12/07.

OWNER: ROBERT VARNER, JR
703 MCKINNEY AVENUE
DALLAS, TEXAS 75202
PHONE: 214-740-0214

EROSION CONTROL PLAN						
LOT 1 - BLOCK A MUNICIPAL INDUSTRIAL PARK						
ROBERT VARNER, JR						
ROCKWALL, TEXAS						
HELMBERGER ASSOCIATES, INC. CIVIL AND ENVIRONMENTAL ENGINEERS <small>124 HOOPER ROAD, WYLE TEXAS 75098 (972) 442-7400</small>						
DESIGN	DRAWN	DATE	SCALE	NOTES	FILE	NO.
HELM	CADD	FEBRUARY 2007	1"=30'	ERBORDER	0704	C4

REV.	BY:	REVISION