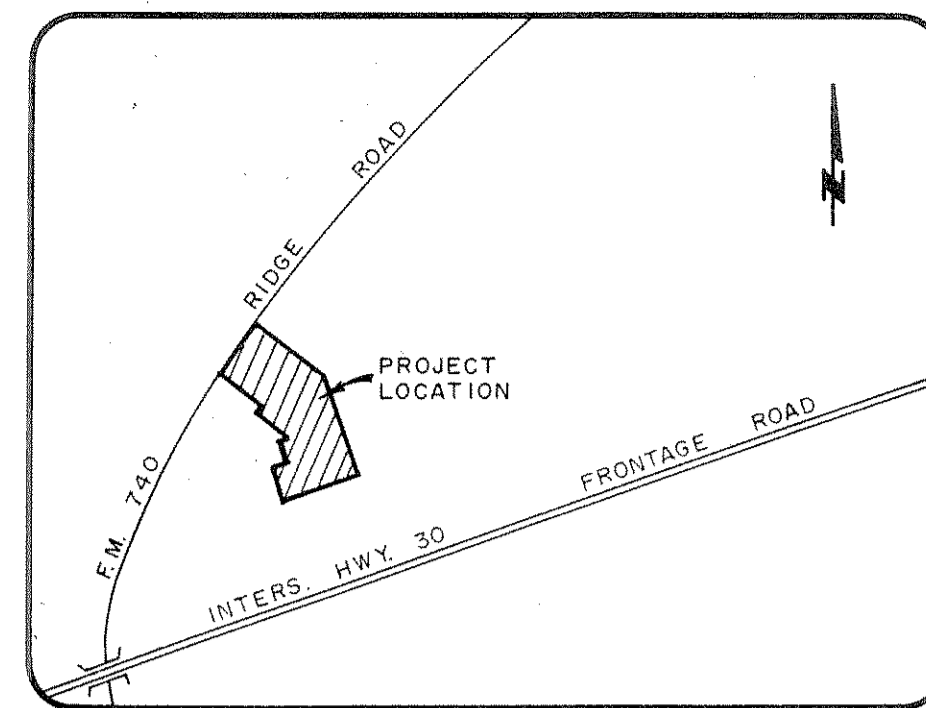
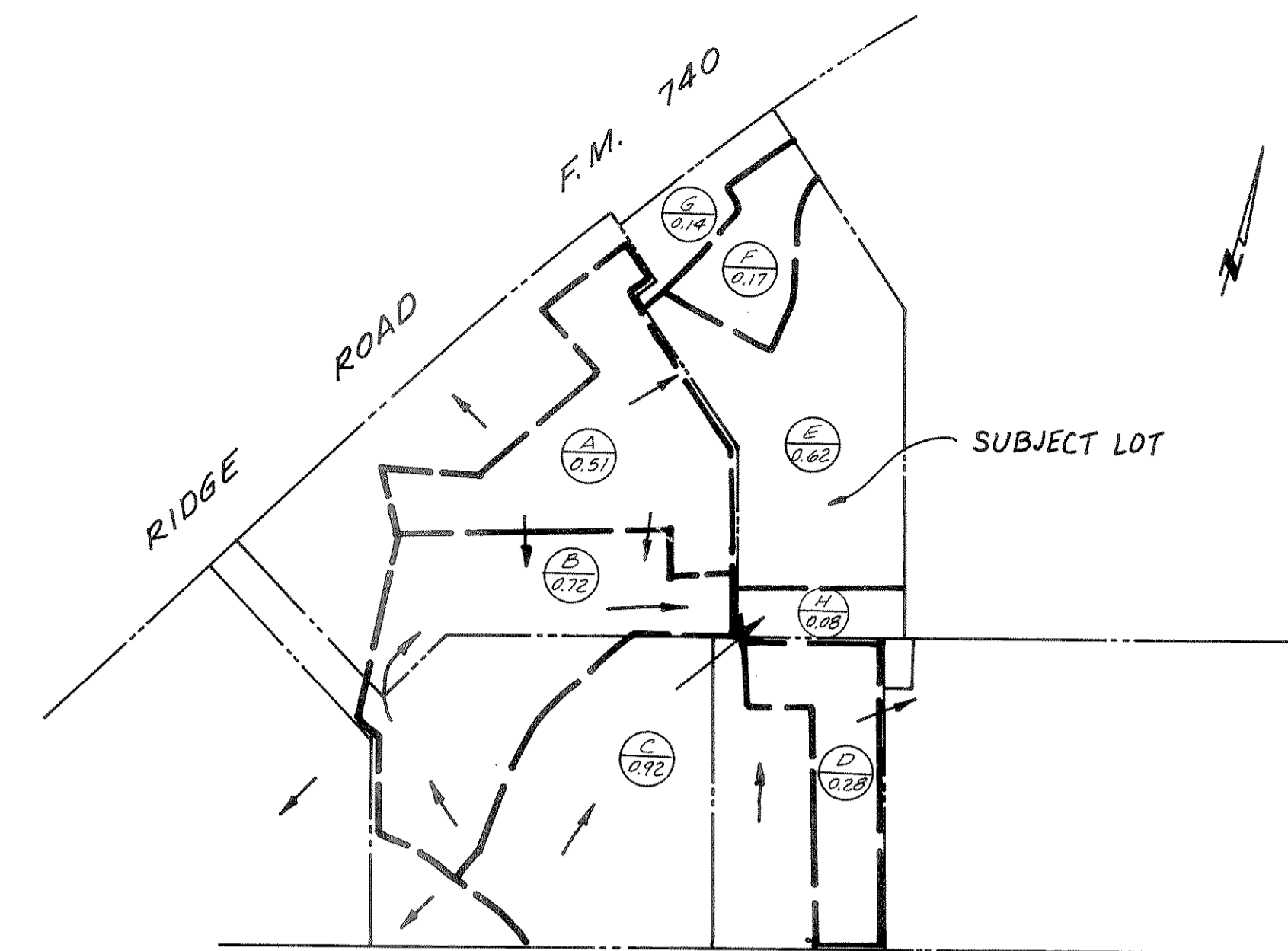


DRAINAGE AREA	AREA (acres)	C	CA	tc (minutes)	I (100 yr) (in/hr)	Q (100 yr) (cfs)	Receiving Storm Sewer
A	0.51	0.8	0.408	10	9.8	4.0	Sheet flow to Wendy's parking lot
B	0.72	0.8	0.576	10	9.8	5.6	Sheet flow to flume south of Wendy's parking
C	0.92	0.8	0.736	10	9.8	7.2	Sheet flow over retaining wall into flume
D	0.28	0.8	0.224	10	9.8	2.2	Sheet flow over retaining wall
E	0.62	0.8	0.496	10	9.8	4.9	Sheet flow, see plan
F	0.17	0.8	0.136	10	9.8	1.3	Sheet flow to proposed mutual access esmt.
G	0.14	0.8	0.112	10	9.8	1.1	Sheet flow to Ridge Road
H	0.08	0.8	0.064	10	9.8	0.6	Sheet flow to flume

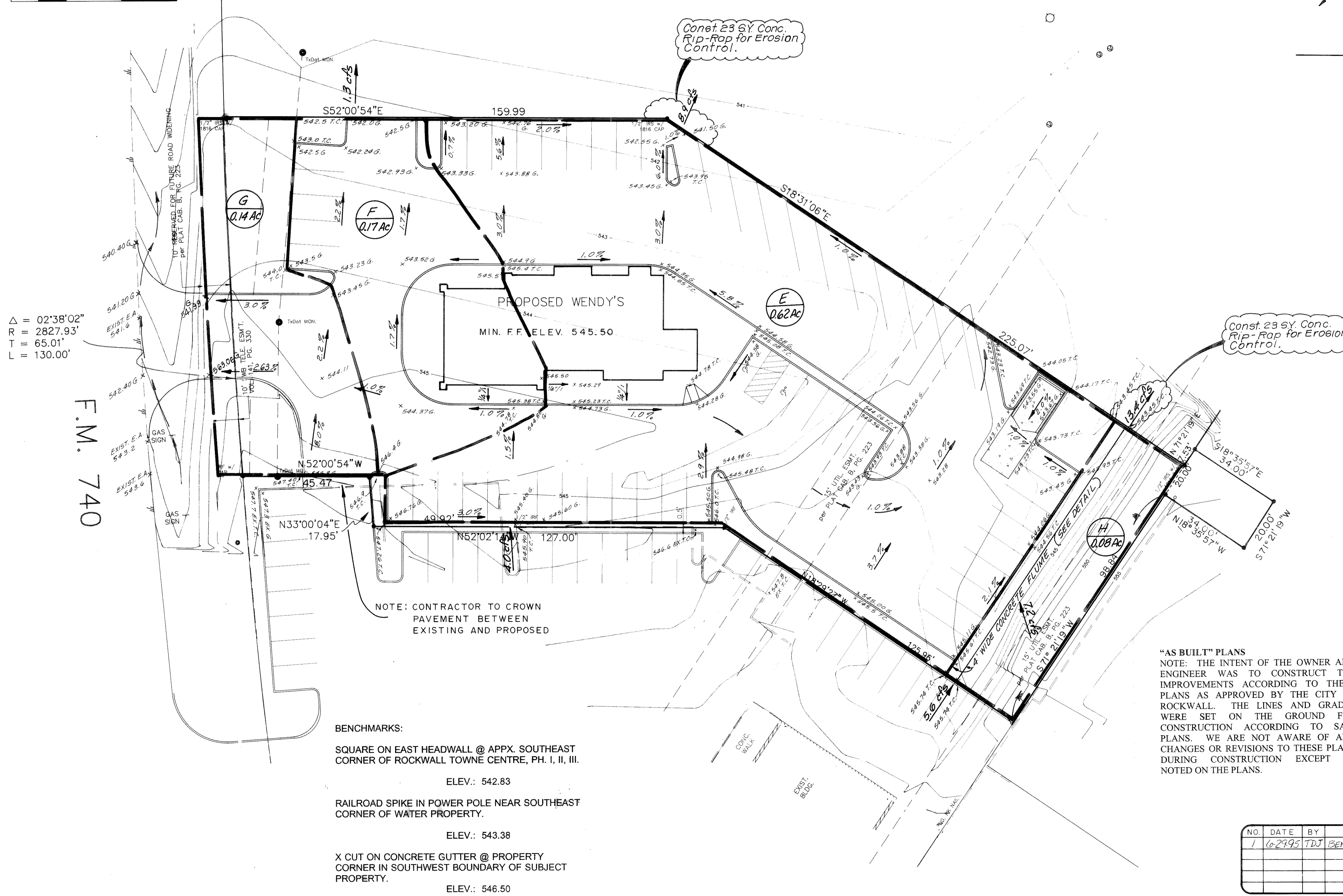
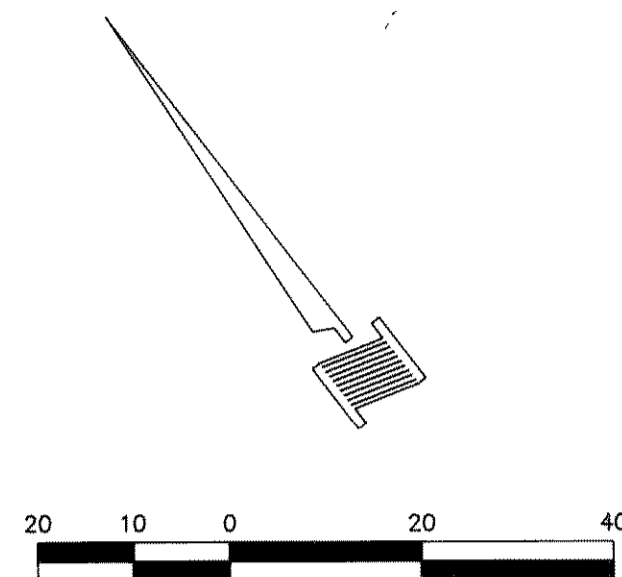


KEY MAP
SCALE: 1"=400'



INTERSTATE 30 SERVICE ROAD

DRAINAGE AREA MAP
SCALE: 1"=100'



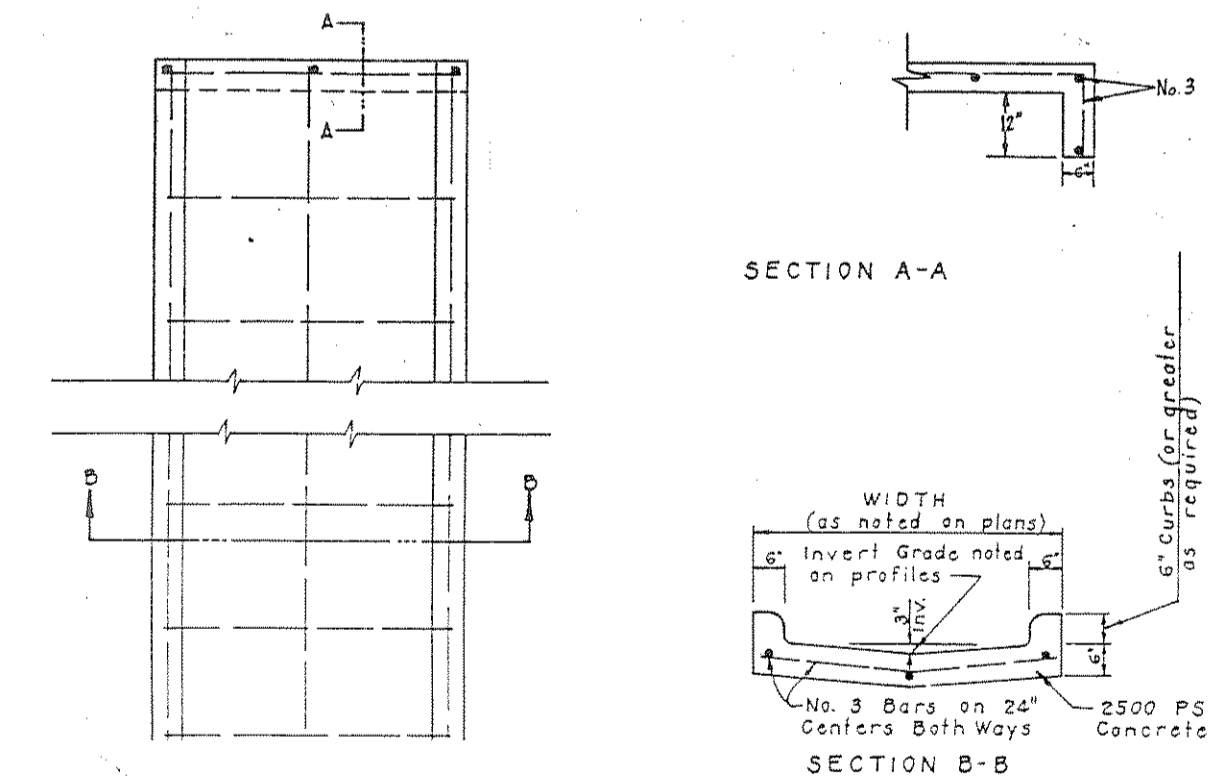
$\Delta = 02'38''02''$
 $R = 2827.93'$
 $T = 65.01'$
 $L = 130.00'$

F.M. 740

NOTE: CONTRACTOR TO CROWN PAVEMENT BETWEEN EXISTING AND PROPOSED

- BENCHMARKS:
- SQUARE ON EAST HEADWALL @ APPX. SOUTHEAST CORNER OF ROCKWALL TOWNE CENTRE, PH. I, II, III.
ELEV.: 542.83
 - RAILROAD SPIKE IN POWER POLE NEAR SOUTHEAST CORNER OF WATER PROPERTY.
ELEV.: 543.38
 - X CUT ON CONCRETE GUTTER @ PROPERTY CORNER IN SOUTHWEST BOUNDARY OF SUBJECT PROPERTY.
ELEV.: 546.50

Const. 23 SY Conc. Rip-Rap for Erosion Control.



FLUME DETAIL

"AS BUILT" PLANS
 NOTE: THE INTENT OF THE OWNER AND ENGINEER WAS TO CONSTRUCT THE IMPROVEMENTS ACCORDING TO THESE PLANS AS APPROVED BY THE CITY OF ROCKWALL. THE LINES AND GRADES WERE SET ON THE GROUND FOR CONSTRUCTION ACCORDING TO SAID PLANS. WE ARE NOT AWARE OF ANY CHANGES OR REVISIONS TO THESE PLANS DURING CONSTRUCTION EXCEPT AS NOTED ON THE PLANS.

6-27-95
 Willie A. Anderson

DRAINAGE PLAN

WENDY'S
 2545 RIDGE ROAD
 E. P. GAINES CHISUM SURVEY, ABSTRACT NO. 64
 JAMES SMITH SURVEY, ABSTRACT NO. 200
 CITY OF ROCKWALL, ROCKWALL CO., TEXAS

DOWDEY ANDERSON & ASSOCIATES, INC.
 16250 DALLAS PKWY. (214) 931-0694 DALLAS, TEXAS

DESIGN	DRAWN	CHECKED	DATE	SCALE	JOB	SHEET
T.D.J.	T.D.J.	W.A.A.	6-23-95	1"=20'	94-090	

NO.	DATE	BY	REVISION
1	6-29-95	T.D.J.	BENCHMARKS