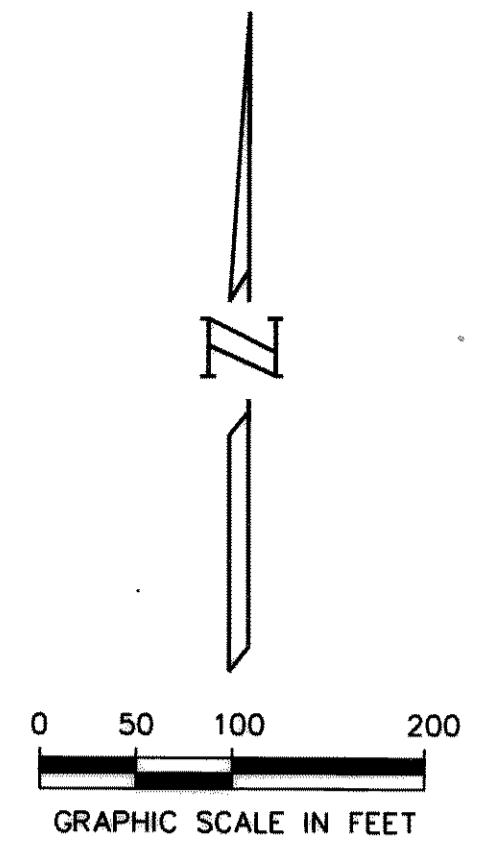
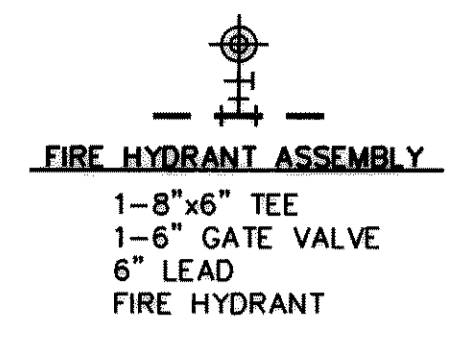


TECH: Tue Apr 22 09:50:36 1997
 FILE: P:\8770MA\277WS002.PRF
 D:\SLD\95337701\GRA\277WS002
 PRY: SCALE: 100.000000

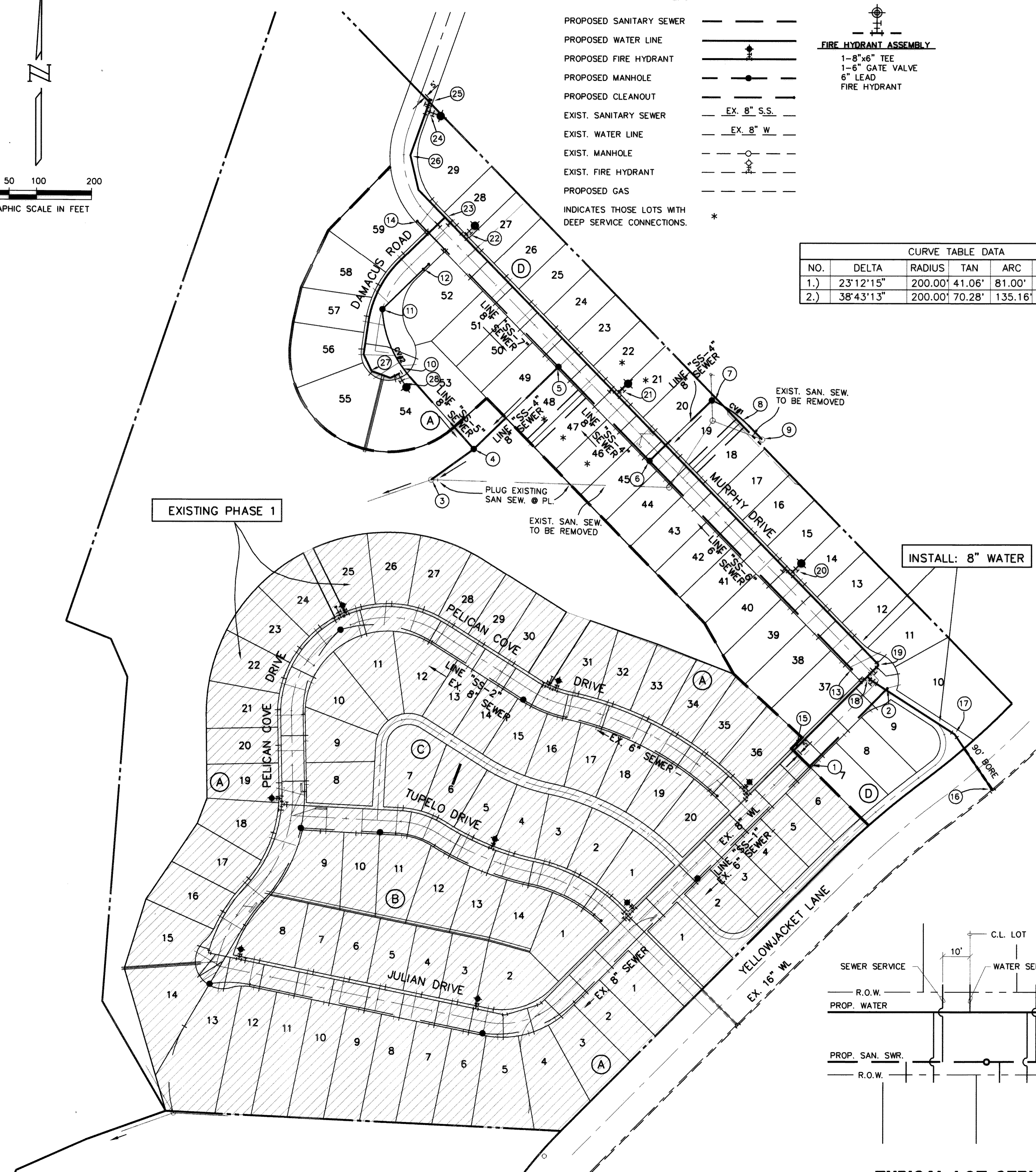


LEGEND

- PROPOSED SANITARY SEWER
- PROPOSED WATER LINE
- PROPOSED FIRE HYDRANT
- PROPOSED MANHOLE
- PROPOSED CLEANOUT
- EXIST. SANITARY SEWER
- EXIST. WATER LINE
- EXIST. MANHOLE
- EXIST. FIRE HYDRANT
- PROPOSED GAS
- INDICATES THOSE LOTS WITH DEEP SERVICE CONNECTIONS. *



CURVE TABLE DATA					
NO.	DELTA	RADIUS	TAN	ARC	CHORD
1.)	23°12'15"	200.00'	41.06'	81.00'	S55°51'25"E
2.)	38°43'13"	200.00'	70.28'	135.16'	N22°16'32"W



DESIGN DESCRIPTION

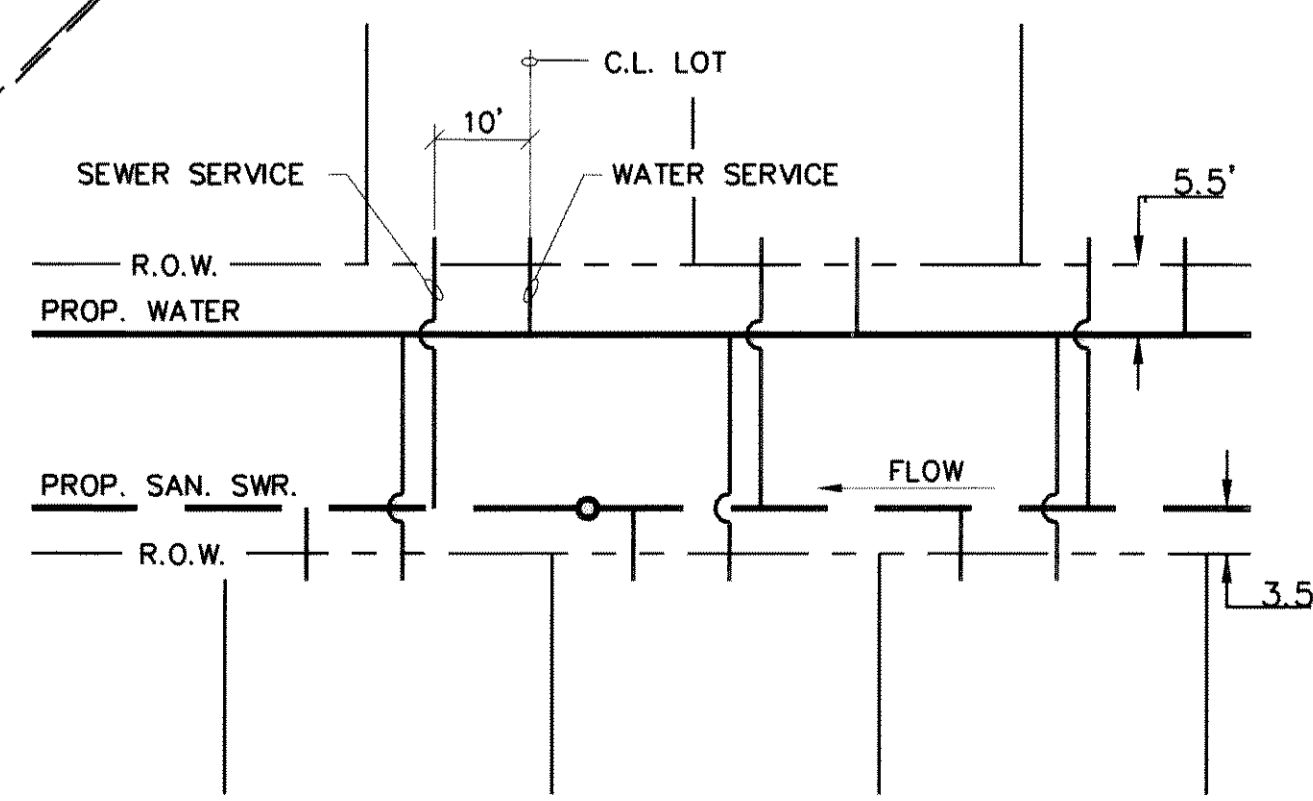
1. STA. 16+47.65 LINE "SS-1" [8032] REMOVE PLUG AND CONN. TO EXIST. 6" P.V.C.
2. STA. 18+67.50 LINE "SS-1" [8018] END 6" P.V.C. AND CONST. CLEANOUT
3. STA. 1+00 LINE "SS-4" = [8039] CONNECT PROP. 8" P.V.C. TO EXISTING M.H.
4. STA. 1+95.39 LINE "SS-4" = [8040] STA. 1+00 LINE "SS-5" CONST. STD. 4" DIA. M.H.
5. STA. 4+10.30 LINE "SS-4" [8041] STA. 1+00 LINE "SS-7" CL. STA. 8+55.39 MURPHY DR. (21.50' RT.) CONST. STD. 4" DIA. DROP M.H.
6. STA. 6+48.33 LINE "SS-4" [8042] STA. 1+00 LINE "SS-6" CL. STA. 12+23.42 MURPHY DR. (21.50' RT.) CONST. STD. 4" DIA. M.H.
7. P.C. STA. 8+06.48 LINE "SS-4" = [8043] CONST. STD. 4" DIA. M.H. OVER EXIST. 8" S.S. LINE FIELD VERIFY LOCATION OF EXIST. 8" S.S. LINE
8. P.T. STA. 8+87.47 LINE "SS-4" [8045]
9. STA. 9+23.43 LINE "SS-4" [8045] CONN. PROP. 8" P.V.C. TO EXIST. MANHOLE FLOWLINE OF PROP. 8" S.S. LINE TO MATCH FLOWLINE OF EXIST. 8" S.S. LINE
10. P.C. STA. 2+75.71 LINE "SS-5" [8047]
11. P.T. STA. 4+10.87 LINE "SS-5" = [8049] CL. P.C. STA. 2+01.92 MURPHY COURT (00.00' RT.) CONST. STD. 4" DIA. M.H.
12. STA. 5+14.88 LINE "SS-5" [8050] END 8" P.V.C. AND BEGIN CONST. OF CLEANOUT
13. STA. 6+28.00 LINE "SS-6" [8065] END 8" P.V.C. AND BEGIN CONST. OF CLEANOUT
14. STA. 4+69.47 LINE "SS-7" [8051] END 8" P.V.C. AND BEGIN CONST. OF CLEANOUT
15. REMOVE PLUG AND CONN. TO EXIST. 8" W.L.
16. BORE 90 L.F. INSTALL: 1-16" x 8" TAPPING SLEEVE & VALVE
17. INSTALL: 1-8" 22 1/2' BEND
18. INSTALL: 1-8" x 8" TEE 2-8" GATE VALVES 1-8" 11 1/4' BEND
19. INSTALL: 1-8" 90' BEND
20. INSTALL: 1-F.H. ASSEMBLY 1-8" GATE VALVE
21. INSTALL: 1-F.H. ASSEMBLY 1-8" GATE VALVE
22. INSTALL: 1-F.H. ASSEMBLY 1-8" GATE VALVE
23. INSTALL: 1-8" x 8" TEE 2-8" GATE VALVES
24. INSTALL: 1-F.H. ASSEMBLY 1-8" GATE VALVE
25. INSTALL: 1-8" RESTRAINED PLUG
26. INSTALL: 2-8" 22 1/2' BEND
27. INSTALL: 3-8" 22 1/2' BEND 1-8" END PLUG
28. INSTALL: 1-F.H. ASSEMBLY

BENCHMARKS:

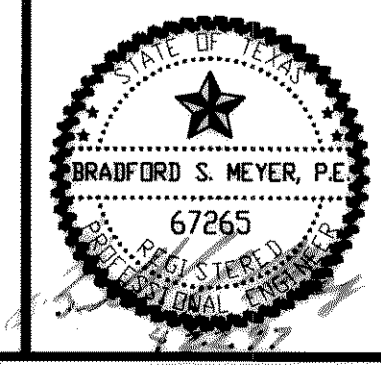
1. CARTER & BURGESS CAP ON NORTH SIDE OF YELLOW JACKET LANE 75' WEST OF FAR WEST ENTRANCE TO CANYON RIDGE APARTMENTS. ELEV. = 574.71
2. CUT IN NOSE OF MEDIAN ON YELLOW JACKET LANE 25' EAST OF SOUTHEAST PROPERTY CORNER OF PROJECT. ELEV. = 573.48
3. TOP OF CONCRETE R.O.W. MARKER AT FENCE CORNER IN THE SOUTHEAST QUADRANT AT THE INTERSECTION OF FM 276 AND HIGH SCHOOL DRIVE. ELEV. = 542.98

RECORD DRAWINGS

These drawings have been modified to reflect construction records provided to the Engineer.



TYPICAL LOT SERVICE DETAIL



DATE	REVISION	MADE	CKD.	APPD.		
Carter & Burgess						
Carter & Burgess, Inc. 7950 Elmbrook Drive Dallas, Texas 75247-4961 (214) 638-0145 METRO (214) 263-2019 Fax (214) 638-0447						
WATER & SANITARY SEWER PLAN						
WATERSTONE ESTATES, PHASE II						
CITY OF ROCKWALL, ROCKWALL COUNTY, TEXAS						
DESIGN	DRAWN	CKD	SCALE	DATE	FILE	NO.
FELDER	PAYNE	MEYER	1" = 100'	MAR. 97	01-2024	8