

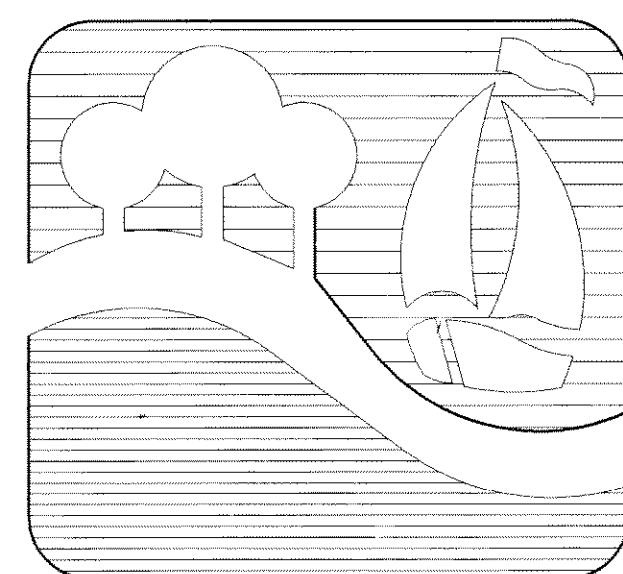
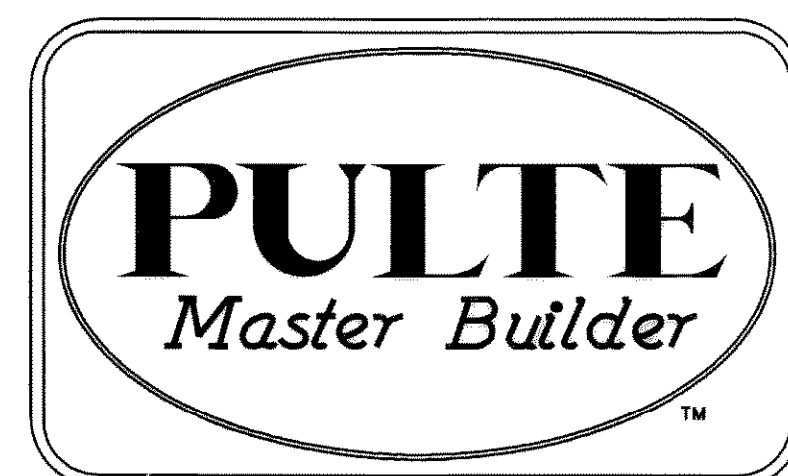
CONSTRUCTION PLANS FOR WATERSTONE ESTATES

PHASE II

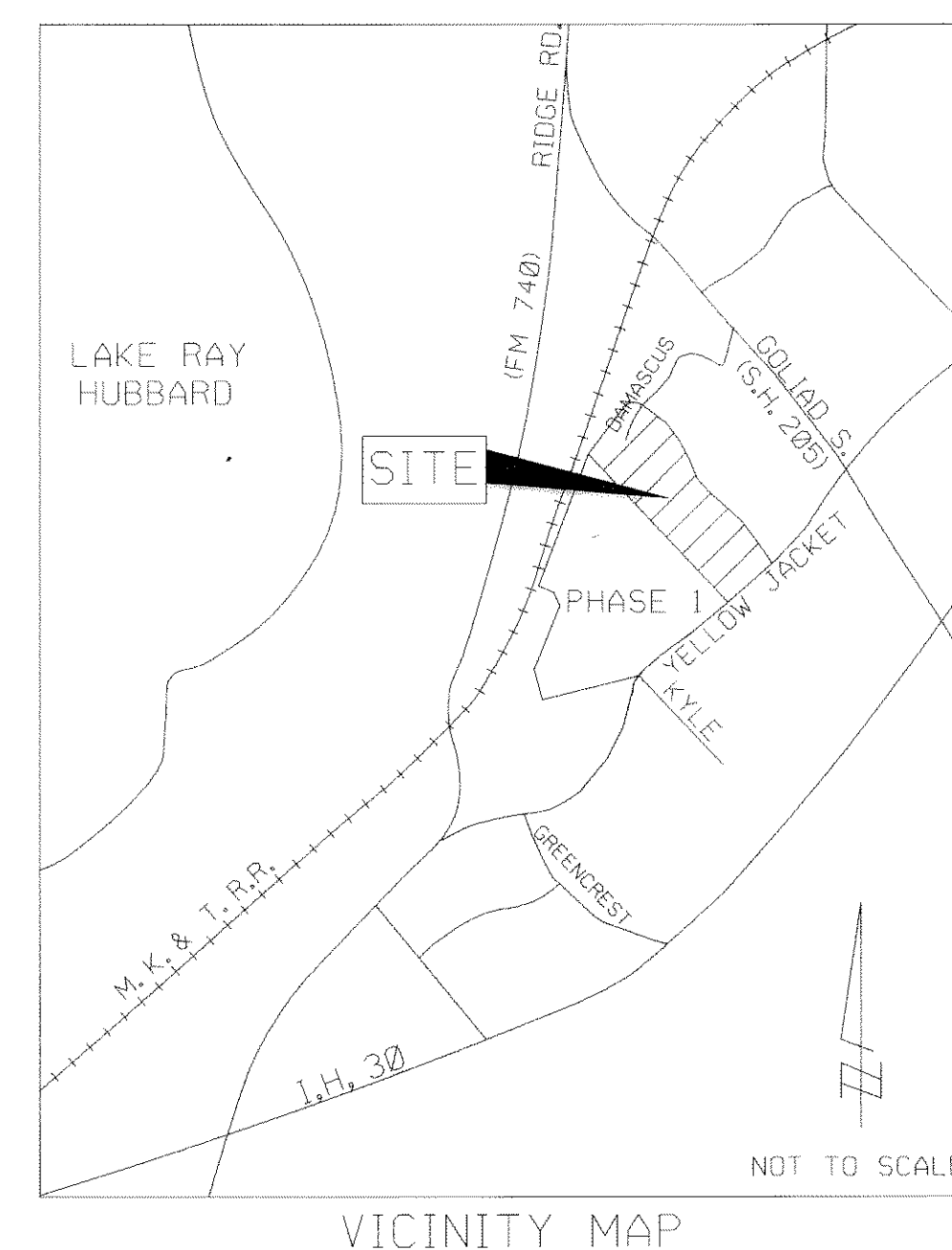
(PAVING, GRADING, DRAINAGE & UTILITIES)

CITY OF ROCKWALL, ROCKWALL COUNTY, TEXAS

MARCH 1997



OWNER \ DEVELOPER:
PULTE HOME CORPORATION OF TEXAS
1431 GREENWAY DRIVE, SUITE 700
IRVING, TEXAS 75038
(214) 518-0177



SHEET INDEX

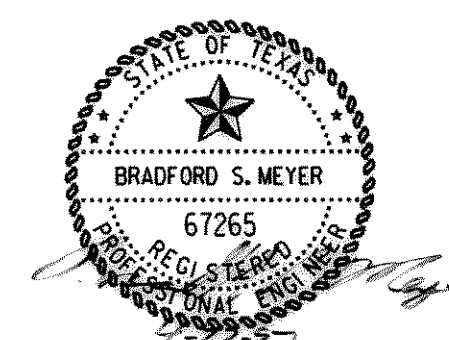
1. COVER
2. FINAL PLAT
3. LOT GRADING
4. LOT GRADING
5. PAVING PLAN & PROFILE - DAMASCUS ROAD & MURPHY DRIVE
6. PAVING PLAN & PROFILE - MURPHY DRIVE & JULIAN DRIVE
7. PAVING PLAN & PROFILE - MURPHY COURT & ALLEY 'B'
8. WATER & SANITARY SEWER PLAN
- 8A. SANITARY SEWER PLAN & PROFILE - LINES SS-3, SS-4, SS-6
9. SANITARY SEWER PLAN & PROFILE - LINES SS-5, SS-7
10. DRAINAGE AREA MAP
11. STORM DRAIN PLAN & PROFILE - LINE 'C' & 'C-1'
12. EROSION CONTROL PLAN

ENGINEER:

Carter Burgess

Consultants in Engineering, Architecture,
Planning and the Environment

CARTER & BURGESS, INC.
7950 ELMBROOK DRIVE, SUITE 250
DALLAS, TX 75247-4961



RECORD DRAWINGS

These drawings have been
modified to reflect construction records
provided to the Engineer.

WATERSTONE ESTATES - PHASE II
CONSTRUCTION PLANS