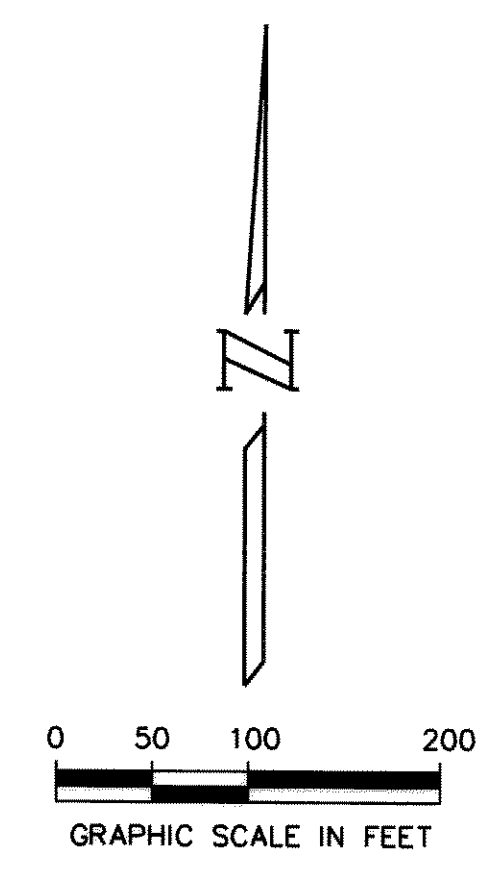
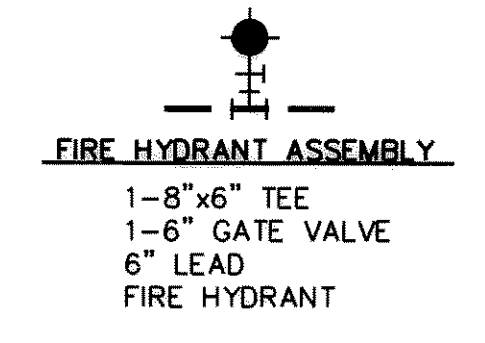


TECH: *no. prf. user*
 Tue Nov 15 08:33:41 1994
 D:\JOB\SLD\93327701\GRA\277WS001
 PRF SCALE: 10000.000000



LEGEND

- PROPOSED SANITARY SEWER
- PROPOSED WATER LINE
- PROPOSED FIRE HYDRANT
- PROPOSED MANHOLE
- PROPOSED CLEANOUT
- EXIST. SANITARY SEWER
- EXIST. WATER LINE
- EXIST. MANHOLE
- EXIST. FIRE HYDRANT
- PROPOSED GAS



CURVE TABLE DATA					
NO.	DELTA	RADIUS	TAN	ARC	CHORD
1.)	46° 38' 03"	200.00'	86.20'	162.78'	N07° 12' 02" E
2.)	21° 08' 56"	200.00'	37.34'	73.82'	S88° 50' 15" E
3.)	52° 20' 00"	200.00'	98.27'	182.68'	N71° 01' 34" E
4.)	12° 08' 30"	253.50'	26.96'	53.72'	N36° 47' 18" E
5.)	30° 36' 46"	286.50'	78.41'	153.08'	N27° 33' 10" E
6.)	13° 23' 13"	286.50'	33.62'	66.94'	N05° 33' 11" E
7.)	49° 38' 34"	200.00'	92.50'	173.29'	N23° 40' 51" E
8.)	49° 38' 34"	200.00'	92.50'	173.29'	S82° 35' 43" E
9.)	20° 22' 00"	238.50'	42.84'	84.78'	S67° 57' 26" E
10.)	29° 24' 29"	578.50'	151.81'	296.93'	S63° 26' 11" E
11.)	28° 40' 01"	150.00'	38.33'	75.05'	S72° 39' 49" E
12.)	19° 48' 38"	548.50'	95.78'	189.65'	S68° 14' 07" E
13.)	27° 40' 35"	268.50'	66.14'	129.70'	S64° 18' 09" E

DESIGN DESCRIPTION

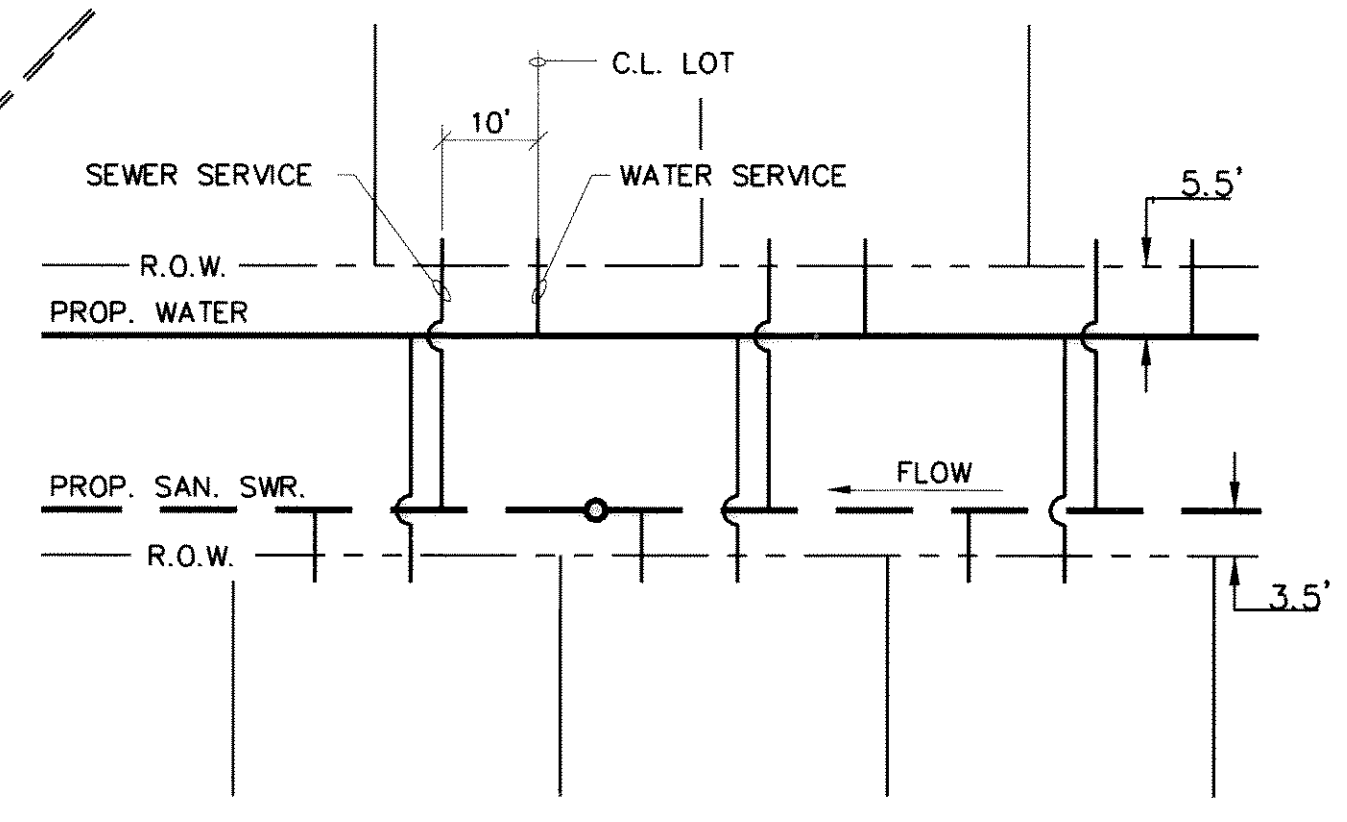
1. P.C. STA. 1+00 LINE SS-1 = CONNECT PROP 6" P.V.C. TO EXIST. M.H. (8001)
2. P.T. STA. 2+62.78 LINE "SS-1" (8011)
3. P.C. STA. 3+52.93 LINE "SS-1" (8012)
 STA. 1+00 LINE "SS-2"
 CONST. 4' DIA. DROP CONN. M.H.
 RIM ELEV. = 511.57
4. P.T. STA. 4+26.76 LINE "SS-1" (8014)
5. P.C. STA. 8+58.98 LINE "SS-1" (8015)
 CL P.C. STA. 5+99.28 JULIAN DR. (21.50' RT.)
 CONST. STD. 4' DIA. M.H.
 RIM ELEV. = 520.12
6. P.T. STA. 10+41.66 LINE "SS-1" (8017)
 CL STA. 7+62.86 JULIAN DR. (21.50' RT.)
7. STA. 13+60 LINE "SS-1" (8018)
 CL STA. 10+81.21 JULIAN DR. (21.50' RT.)
 CONST. STD. 4' DIA. M.H.
 RIM ELEV. = 548.32
8. STA. 16+47.65 LINE "SS-1" (8032)
 END 6" P.V.C. AND PLUG
9. STA. 18+67.50 LINE "SS-1" (PHASE II) (8018)
 CONST. CLEANOUT
10. P.C. STA. 2+24.17 LINE "SS-2" (8020)
11. P.T. STA. 2+77.89 LINE "SS-2" (8021)
12. STA. 4+30.97 LINE "SS-2" (8022)
 CL STA. 1+00 LINE "SS-3"
 CL STA. 3+90.97 PELICAN COVE DR. (21.50' RT.)
 CONST. 4' DIA. DROP CONN. M.H.
 RIM ELEV. = 520.56
13. P.T. STA. 4+97.91 LINE "SS-2" (8023)
14. P.C. STA. 6+38.09 LINE "SS-2" (8024)
15. P.T. AND P.C. STA. 8+11.38 LINE "SS-2" (8028)
 CL STA. 7+79.81 PELICAN COVE DR. (0.0' RT.)
 CONST. STD. 4' DIA. M.H.
 CENTER OF STREET
 RIM ELEV. = 527.84
16. P.T. STA. 9+84.66 LINE "SS-2" (8028)
17. P.C. STA. 11+81.32 LINE "SS-2" (8029)
 CL P.C. STA. 11+63.21 PELICAN COVE DR. (21.50' RT.)
 CONST. STD. 4' DIA. M.H.
 RIM ELEV. = 534.89
18. P.R.C. STA. 12+66.11 LINE "SS-2" (8030)
19. P.T. STA. 15+63.02 LINE "SS-2" (8031)
 END 6" P.V.C. AND BEGIN CONST. OF CLEANOUT
20. STA. 15+80.02 LINE "SS-2"
 CONST. CLEANOUT IN SIDEWALK
21. STA. 2+44 LINE "SS-3" = STA. 2+62.92 TUPELO DR. (21.50' RT.)
 CONST. 4' DIA. DROP CONN. M.H.
 RIM ELEV. = 530.79
22. P.C. STA. 2+72.54 LINE "SS-3" (8033)
23. P.R.C. STA. 3+47.59 LINE "SS-3" (8034)
24. P.R.C. STA. 5+37.24 LINE "SS-3" (8035)
25. P.T. STA. 6+66.94 LINE "SS-3" (8036)
 END 6" P.V.C. AND BEGIN CONST. OF CLEANOUT
26. STA. 6+83.94 LINE "SS-3"
 CONST. CLEANOUT
27. INSTALL:
 1-8" RESTRAINED PLUG
28. INSTALL:
 1-8"x8" TEE
 2-8" GATE VALVES
 1-F.H. ASSEMBLY
29. INSTALL:
 1-8"x8" CROSS
 2-8" GATE VALVES
 1-8" GATE VALVE
 1-8"x6" REDUCER
 1-F.H. ASSEMBLY
30. INSTALL:
 1-8" 22 1/2" BEND
 (ANG. = 28°26'19")
31. INSTALL:
 1-8" 22 1/2" BEND
 (ANG. = 28°26'19")
32. INSTALL:
 1-F.H. ASSEMBLY
33. INSTALL:
 1-8" 90° BEND
 1-8" GATE VALVE
 1-F.H. ASSEMBLY
34. INSTALL:
 1-8"x6" TEE
 1-8" GATE VALVE
 1-6" GATE VALVE
 1-F.H. ASSEMBLY
35. INSTALL:
 1-8"x8" TEE
 2-8" GATE VALVES
 1-8" RESTRAINED PLUG
 1-F.H. ASSEMBLY
36. INSTALL:
 1-8"x8" TEE
 2-8" GATE VALVES
 1-8" RESTRAINED PLUG
 1-F.H. ASSEMBLY
37. INSTALL:
 1-F.H. ASSEMBLY
38. BORE 90 L.F.
 INSTALL:
 1-16"x8" TAPPING SLEEVE & VALVE

BENCHMARKS:

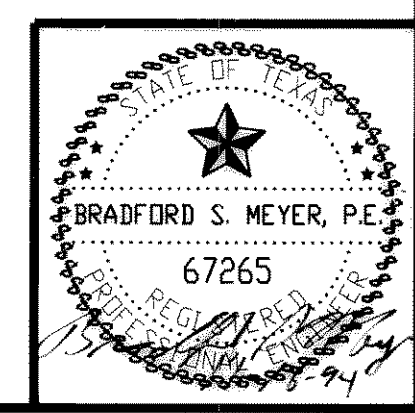
1. CARTER & BURGESS CAP ON NORTH SIDE OF YELLOW JACKET LANE 75'± WEST OF FAR WEST ENTRANCE TO CANYON RIDGE APARTMENTS. ELEV.= 574.71
2. CUT IN NOSE OF MEDIAN ON YELLOW JACKET LANE 25'± EAST OF SOUTHEAST PROPERTY CORNER OF PROJECT. ELEV.= 573.48
3. TOP OF CONCRETE R.O.W. MARKER AT FENCE CORNER IN THE SOUTHEAST QUADRANT AT THE INTERSECTION OF FM 276 AND HIGH SCHOOL DRIVE. ELEV.= 542.98

RECORD DRAWING'S

These drawings have been modified to reflect construction records provided to the Engineer.



TYPICAL LOT SERVICE DETAIL



DATE	REVISION	MADE	CKD.	APPD.		
 Carter & Burgess Carter & Burgess, Inc. 7950 Elmbrook Drive Dallas, Texas 75247-4961 (214) 638-0145 METRO (214) 263-2019 Fax (214) 638-0447						
WATER & SANITARY SEWER PLAN WATERSTONE ESTATES, PHASE I & II						
CITY OF ROCKWALL, ROCKWALL COUNTY, TEXAS						
DESIGN	DRAWN	CKD	SCALE	DATE	FILE	NO.
FIELDER	CARLUTHERS	PAYNE	1" = 100'	SEPT., '94	01-2024	15 OF 21