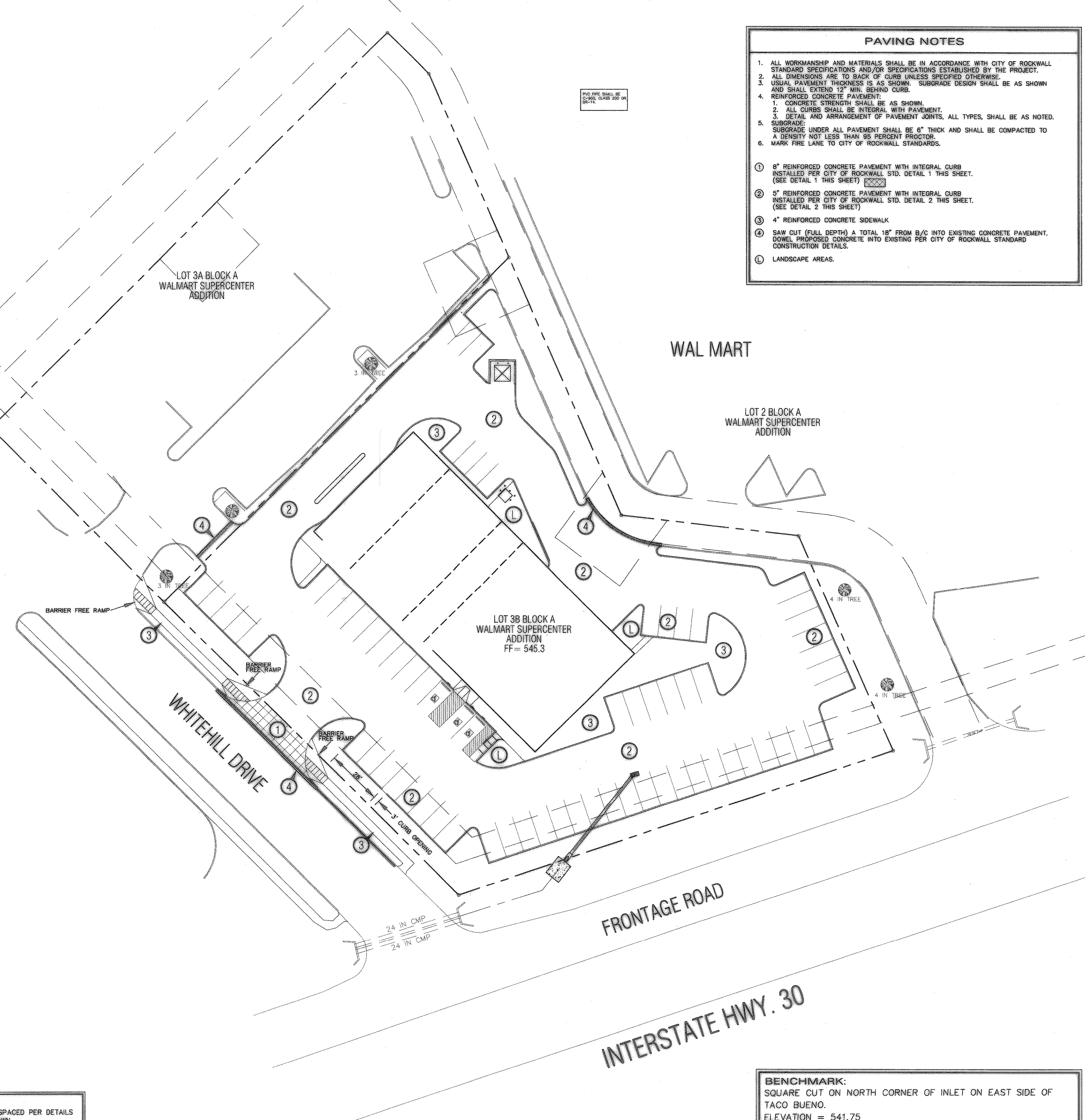


**NOTE:**  
1. JOINTS SHALL BE INSTALLED AND SPACED PER DETAILS J1 AND J2 THIS SHEET OR AS SHOWN.



**PAVING NOTES**

1. ALL WORKMANSHIP AND MATERIALS SHALL BE IN ACCORDANCE WITH CITY OF ROCKWALL STANDARD SPECIFICATIONS AND/OR SPECIFICATIONS ESTABLISHED BY THE PROJECT.
2. ALL DIMENSIONS ARE TO FACE OF CURB UNLESS SPECIFIED OTHERWISE.
3. USUAL PAVEMENT THICKNESS IS AS SHOWN. SUBGRADE DESIGN SHALL BE AS SHOWN AND SHALL EXTEND 12" MIN. BEHIND CURB.
4. REINFORCED CONCRETE PAVEMENT:
  1. CONCRETE STRENGTH SHALL BE AS SHOWN.
  2. ALL CURBS SHALL BE INTEGRAL WITH PAVEMENT.
  3. DETAIL AND ARRANGEMENT OF PAVEMENT JOINTS, ALL TYPES, SHALL BE AS NOTED.
5. SUBGRADE:
  1. SUBGRADE UNDER ALL PAVEMENT SHALL BE 6" THICK AND SHALL BE COMPACTED TO A DENSITY NOT LESS THAN 95 PERCENT PROCTOR.
  2. MARK FIRE LANE TO CITY OF ROCKWALL STANDARDS.
6. REINFORCED CONCRETE PAVEMENT WITH INTEGRAL CURB INSTALLED PER CITY OF ROCKWALL STD. DETAIL 1 THIS SHEET. (SEE DETAIL 1 THIS SHEET)
7. 5" REINFORCED CONCRETE PAVEMENT WITH INTEGRAL CURB INSTALLED PER CITY OF ROCKWALL STD. DETAIL 2 THIS SHEET. (SEE DETAIL 2 THIS SHEET)
8. 4" REINFORCED CONCRETE SIDEWALK
9. SAW CUT (FULL DEPTH) A TOTAL 18" FROM B/C INTO EXISTING CONCRETE PAVEMENT. DOWEL PROPOSED CONCRETE INTO EXISTING PER CITY OF ROCKWALL STANDARD CONSTRUCTION DETAILS.
10. LANDSCAPE AREAS.

**BENCHMARK:**  
SQUARE CUT ON NORTH CORNER OF INLET ON EAST SIDE OF TACO BUENO.  
ELEVATION = 541.75

**AS-BUILT**

**dietz engineering**



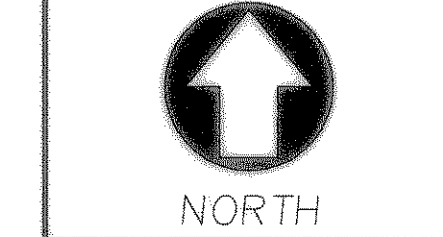
Signing Date: 5/24/2011

**dietz engineering**  
811 e. plano parkway  
suite 109  
plano, texas 75074  
voice: 972 633-8867  
fax: 972 633-1327

Drawn By: LL  
Checked By: JMC

Revisions:

**SITE RETAIL**  
PAVING PLAN  
PLAN VIEW  
for the  
City of Rockwall, Texas



24"x36" Scale: 1" = 30'

11"x17" Scale: 1" = 60'

Vertical Scale: NA

Project Number: E-SPC-001

Issue Date: 24 MAY 2011

Sheet Title:

**PAVING**

Sheet No.:

**C1.04**