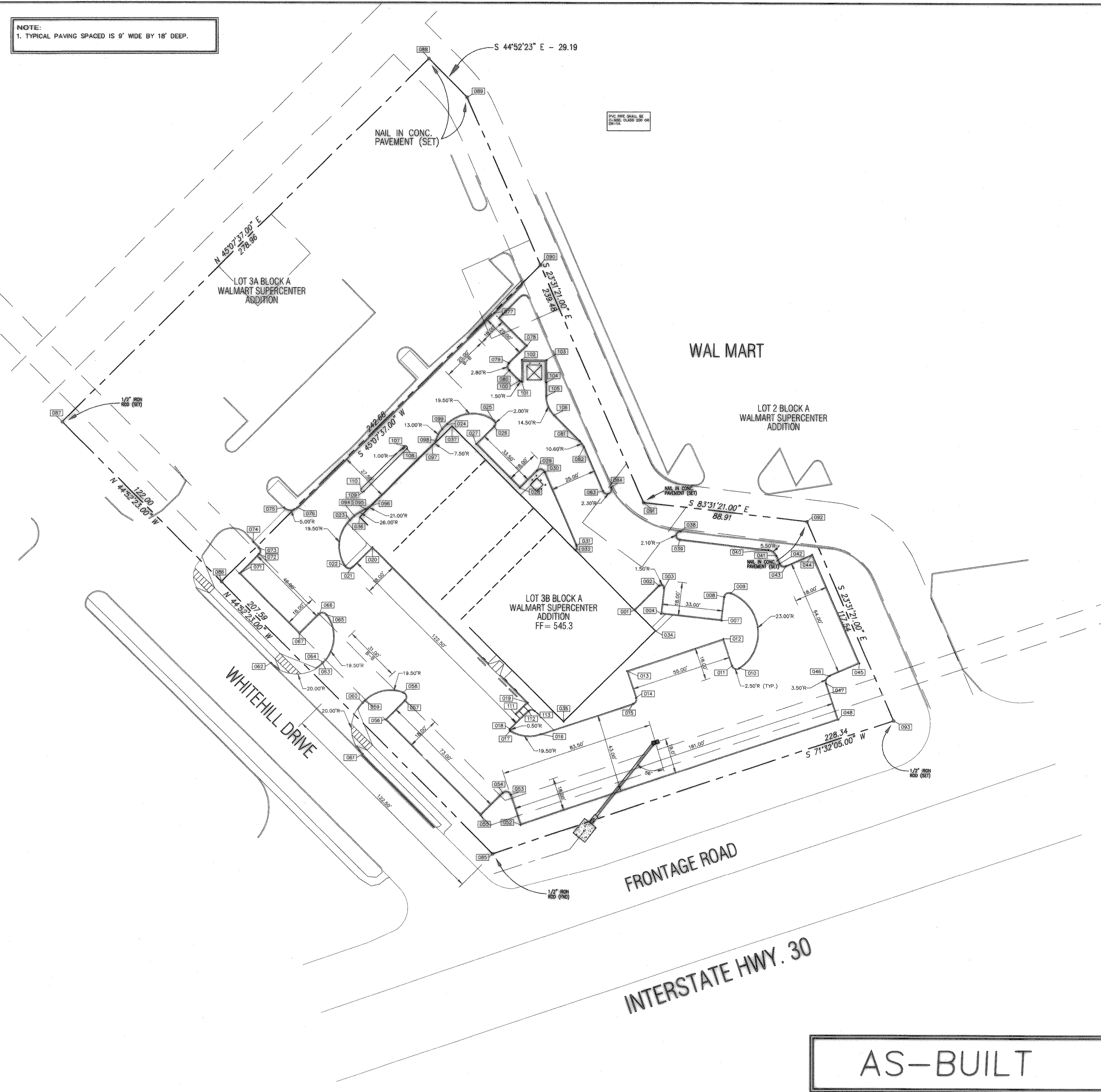


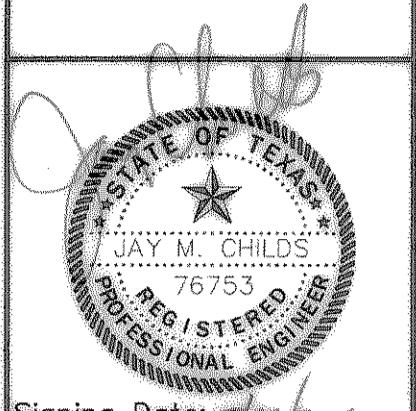
HORIZONTAL DIMENSION CONTROL							
POINT NUMBER	POINT NORTHING	POINT EASTING	POINT DESCRIPTION	POINT NUMBER	POINT NORTHING	POINT EASTING	POINT DESCRIPTION
001	5132.0477	5076.6720	END BC	058	4086.8925	4951.6285	PI/PC
002	5145.1477	5089.8302	PC	059	5082.4495	4931.0335	PT
003	5143.9150	5092.3789	PT	060	5081.3285	4929.9075	PC
004	5130.1394	5090.8106	COR BC	061	5053.7247	4929.8730	PT
005	-	-	-	062	5103.2498	4880.3862	PC
006	-	-	-	063	5103.2070	4907.9451	PT
007	5126.4065	5123.5987	BC COR	064	5103.5845	4908.3242	PC
008	5139.1968	5125.0549	PC	065	5129.3521	4909.9767	PI/PC
009	5141.2478	5128.4350	PI/PC	066	5129.5919	4906.2371	PT
010	5100.7998	5133.1858	PI/PC	067	5119.0232	4895.6215	COR BC
011	5102.0706	5129.4019	PT	068	-	-	-
012	5116.4579	5124.5977	COR BC	069	-	-	-
013	5099.0376	5072.4293	COR BC	070	-	-	-
014	5084.3358	5077.3387	PC	071	5151.6189	4863.1623	COR BC
015	5081.1727	5075.7592	PT	072	5162.0007	4873.5802	PC
016	5064.5055	5025.8457	PC	073	5165.5235	4873.6106	PT
017	5066.3652	5009.5064	PI/PC	074	5168.5930	4870.5981	BC
018	5067.1462	5009.4144	PT	075	5187.1169	4887.3996	PC
019	5081.5889	5016.9593	COR BC	076	5187.1299	4894.4419	PT
020	5165.9208	4935.0002	COR BC	077	5292.8045	5000.5858	COR BC
021	5155.2208	4924.2526	PC	078	5276.0909	5018.2287	COR BC
022	5155.6129	4920.4039	PI/PC	079	5265.5829	5008.6784	PC
023	5180.1928	4922.9080	PT	080	5261.7944	5008.8890	PT
024	5232.4027	4975.3497	PC	081	5223.5706	5046.9382	PC
025	5234.5069	5000.3637	PI/PC	082	5220.3501	5049.1239	PT
026	5231.4564	5000.6203	PT	083	5196.4974	5059.4977	PC
027	5221.7616	4990.8825	COR BC	084	5198.3216	5063.6822	PT
028	5198.0211	5014.5180	COR BC	085	5000.0000	5000.0000	PROP COR
029	5207.2860	5023.8241	PC	086	5147.1304	4853.5202	PROP COR
030	5206.5114	5027.8805	PT	087	5233.5711	4767.4616	PROP COR
031	5167.1226	5045.0111	PC	088	5409.3884	4965.1530	PROP COR
032	5164.3671	5044.4955	END BC	089	5409.7020	4985.7480	PROP COR
033	-	-	-	090	5318.3583	5025.5080	PROP COR
034	5120.7837	5087.8862	BLDG COR	091	5190.1236	5081.3260	PROP COR
035	5071.9480	5038.2792	BLDG COR	092	5180.0931	5169.6708	PROP COR
036	5181.9488	4928.2152	BLDG COR	093	5072.3216	5216.5816	PROP COR
037	5231.3365	4977.8222	BLDG COR	094	5182.5923	4925.3181	PC
038	5174.4133	5101.4798	PC	095	5186.1975	4931.4944	PI/PC
039	5170.2449	5100.9658	PT	096	5188.4211	4934.7147	PT
040	5148.7862	5164.8039	PC	097	5220.6145	4967.0490	PC
041	5161.5343	5153.2070	PT	098	5223.6631	4969.3829	PI/PC
042	5157.9354	5155.0885	PC	099	5229.6554	4972.5910	PT
043	5156.1009	5158.2986	PT	100	5256.3290	5014.3303	PC
044	5162.2871	5172.5106	COR BC	101	5255.8873	5015.3899	PT
045	5103.6053	5198.0536	COR BC	102	5267.3870	5015.5418	COR DUMP WALL
046	5096.6891	5182.1186	PC	103	5267.3574	5028.8751	COR DUMP WALL
047	5092.3514	5180.1957	PT	104	5256.3574	5028.8485	END BC
048	5072.8831	5186.6966	COR BC	105	5247.7788	5028.8279	PC
049	-	-	-	106	5237.5183	5033.0521	PT
050	-	-	-	107	5220.4933	4952.0497	PC
051	-	-	-	108	5219.0759	4953.4608	PT
052	5015.5550	5015.0152	COR BC	109	5196.0605	4930.3431	PC
053	5031.5725	5009.6666	PC	110	5197.4778	4928.9320	PT
054	5032.5523	5005.5315	PT	111	5075.3239	5012.5138	END BC
055	5020.6380	4993.5642	COR BC	112	5077.0245	5019.3361	PC
056	5072.3742	4942.0643	COR BC	113	5077.1570	5022.6736	PI/END BC
057	5082.7795	4952.5158	PC				

NOTE:
1. TYPICAL PAVING SPACED IS 9' WIDE BY 18' DEEP.



AS-BUILT

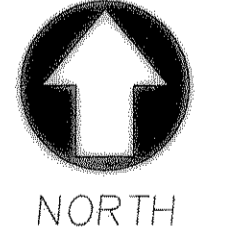
dietz engineering



Signing Date: 5/17/2001
dietz engineering
 811 e. plano parkway
 suite 109
 plano, texas 75074
 voice: 972 633-8867
 fax: 972 633-1327

Drawn By: LL
 Checked By: JMC
 Revisions:

SITE RETAIL
DIMENSION CONTROL MAP
PLAN VIEW
 for the
 City of Rockwall, Texas



24"x36" Scale: 1" = 30'
 11"x17" Scale: 1" = 60'
 Vertical Scale: NA

Project Number: E-SPC-001
 Issue Date: 24 MAY 2001
 Sheet Title:

DIMCON

Sheet No.:
C1.01