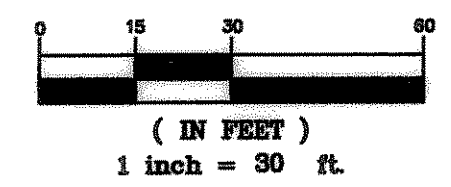


"AS-BUILT" PLANS
 NOTE: THE INTENT OF THE OWNER AND ENGINEER WAS TO CONSTRUCT THE IMPROVEMENTS ACCORDING TO THESE PLANS AS APPROVED BY THE CITY OF ROCKWALL. THE CONSTRUCTION OF ALIGNMENTS AND GRADES WERE VERIFIED BY JONES & BOYD IN ACCORDANCE TO THESE DOCUMENTS. WE ARE NOT AWARE OF ANY CHANGES OR REVISIONS TO THESE PLANS DURING CONSTRUCTION EXCEPT AS SHOWN ON THESE DOCUMENTS.

Contractor to field verify all existing underground utilities & report any discrepancies or conflicts to Engineer prior to any installation.



GENERAL NOTES-PAVING

- GENERAL CONSTRUCTION NOTES: REFER TO SHEET C01 "GENERAL CONSTRUCTION NOTES, LEGEND AND ABBREVIATIONS" FOR THE GENERAL CONSTRUCTION NOTES FOR THE PROJECT.
- PROTECTION OF EXISTING IMPROVEMENTS: THE CONTRACTOR SHALL TAKE CARE NOT TO DISTURB EXISTING UTILITIES, BUILDING FOUNDATION OR OTHER SITE STRUCTURES DURING PAVEMENT OPERATIONS.
- SUBGRADE PREPARATION: PREPARATION OF SUBGRADE UNDER PAVED AREAS SHALL BE PERFORMED IN ACCORDANCE WITH THE GOVERNING AUTHORITIES' SPECIFICATIONS OR THE GEOTECHNICAL REPORT. THE MORE RESTRICTIVE REQUIREMENTS SHALL APPLY.
 PREPARATION OF THE SUBGRADE FOR PAVING WITHIN RIGHT-OF-WAY, ACCESS EASEMENTS AND/OR FIRE LANES SHALL NOT BE INITIATED UNTIL ALL TESTING OF UNDERGROUND UTILITIES HAS BEEN COMPLETED AND VERIFIED TO MEET THE GOVERNING AUTHORITIES' SPECIFICATIONS AND AUTHORIZATION TO PROCEED HAS BEEN RECEIVED FROM THE INSPECTOR.
- PAVEMENT SUBGRADE SHALL NOT BE ALLOWED TO RETAIN WATER. WET MATERIAL SHALL BE REMOVED TO DRY, SOUND MATERIAL AND APPROPRIATE DENSITY ACHIEVED PRIOR TO PAVING OPERATIONS.
- PROOF-ROLL SUBGRADE: THE SUBGRADE SHALL BE PROOF-ROLLED WITH HEAVY PNEUMATIC EQUIPMENT. ANY SOFT OR PUMPING AREAS SHALL BE EXCAVATED TO FIRM SUBGRADE AND BACKFILLED AND RE-COMPACTED IN CONFORMANCE WITH THE GEOTECHNICAL REPORT.
- HYDRATED LIME: HYDRATED LIME (IF REQUIRED) SHALL MEET THE REQUIREMENTS OF TXDOT ITEM 260, LIME TREATMENT USED AS SUBGRADE. LIME SHALL BE APPLIED AT THE RATE OF 6% BY WEIGHT, THOROUGHLY MIXED AND BLENDED WITH THE TOP 6" OF SUBGRADE AND UNIFORMLY COMPACTED TO A MINIMUM OF 100 PERCENT OF STANDARD PROCTOR (ASTM D698) DETERMINED BY THAT TEST. LIME STABILIZATION SHALL EXTEND ONE (1) FOOT OUTSIDE THE LIMITS OF THE PAVED AREA. IT SHOULD BE PROTECTED AND MAINTAINED IN A MOST CONDITION UNTIL THE PAVEMENT IS PLACED.
- SAND CUSHION PROHIBITED: THE USE OF SAND CUSHION UNDER PAVEMENT, INCLUDING SIDEWALKS, IS STRICTLY PROHIBITED.
- REINFORCING BARS: ALL REINFORCING BARS SHALL BE GRADE 40 KSI DEFORMED REINFORCING STEEL. SIZE AND SPACING SHALL BE IN ACCORDANCE WITH THE DETAILS.
- BAR CHAIRS: ALL REINFORCING STEEL AND DOWEL BARS IN PAVEMENT SHALL BE SUPPORTED AND MAINTAINED AT THE CORRECT CLEARANCES BY THE USE OF BAR CHAIRS OR OTHER APPROVED SUPPORT.
- CONNECTION TO EXISTING PAVEMENT: WHERE PROPOSED PAVEMENT TO EXISTING PAVEMENT IS TO BE CONSTRUCTED BY THE CONTRACTOR, AT LEAST 15" OF REINFORCING STEEL SHALL BE EXPOSED FROM THE EXISTING PAVEMENT, OR THE CONTRACTOR SHALL PROVIDE HORIZONTAL DOWEL BARS PER THE DETAILS.
- TEMPERATURE CONDITIONS FOR CONCRETE PLACEMENT: CONCRETE SHALL NOT BE PLACED WHEN THE TEMPERATURE IS BELOW 40 DEGREES FAHRENHEIT AND FALLING, BUT MAY BE PLACED WHEN TEMPERATURE IS ABOVE 35 DEGREES FAHRENHEIT AND RISING. THE TEMPERATURE READING SHALL BE TAKEN IN THE SHADE AND AWAY FROM ARTIFICIAL HEAT.
- CONCRETE PAVEMENT CURING: MEMBRANE CURING TYPE 2, WHITE PIGMENTED, SHALL BE USED FOR CURING ALL CONCRETE SURFACES IMMEDIATELY AFTER FINISHING OF SURFACES AND SHALL BE IN ACCORDANCE WITH THE TEXAS HIGHWAY DEPARTMENT STANDARD SPECIFICATIONS ITEM #526.
- TESTING: SAMPLES FOR STRENGTH TESTS OF THE CONCRETE PAVEMENT WILL BE TAKEN BY THE GEOTECHNICAL ENGINEER TO VERIFY DESIGN STRENGTH. PAVEMENT AREAS FOUND TO BE DEFICIENT IN STRENGTH SHALL BE REMOVED AND REPLACED SOLELY AT THE EXPENSE OF THE CONTRACTOR. THE GEOTECHNICAL ENGINEER SHALL ALSO RANDOMLY CORE THE PAVEMENT TO VERIFY THE THICKNESS OF CONCRETE. ANY AREA FOUND TO BE DEFICIENT IN THICKNESS SHALL BE REMOVED AND REPLACED SOLELY AT THE EXPENSE OF THE CONTRACTOR.
- SIDEWALKS AND RAMPS: CONSTRUCTION OF SIDEWALKS, WHEELCHAIR RAMPS AND ACCESSIBLE ROUTES SHALL BE IN ACCORDANCE WITH THE TEXAS ACCESSIBILITY STANDARDS (TAS) AND THE AMERICANS DISABILITY ACT (ADA).
- PAVEMENT MARKINGS: PAVEMENT MARKINGS SHALL BE PROVIDED IN ACCORDANCE WITH THE TEXAS "UNIFORM TRAFFIC MANUAL FOR PAVEMENT MARKINGS". FIRE LANES SHALL BE STRIPED IN ACCORDANCE WITH THE GOVERNING AUTHORITIES' REQUIREMENTS. ALL HANDICAP SYMBOLS, SIGNAGE AND PAVEMENT MARKINGS SHALL COMPLY WITH TAS AND ADA STANDARDS.

NOTE
 ALL POINTS AND DIMENSIONS ARE TO FACE OF CURB UNLESS OTHERWISE SPECIFIED.

NOTE
 FULL-DEPTH SAW CUT ALL JOINTS MADE FOR REMOVAL OF EXISTING STATE FACILITIES

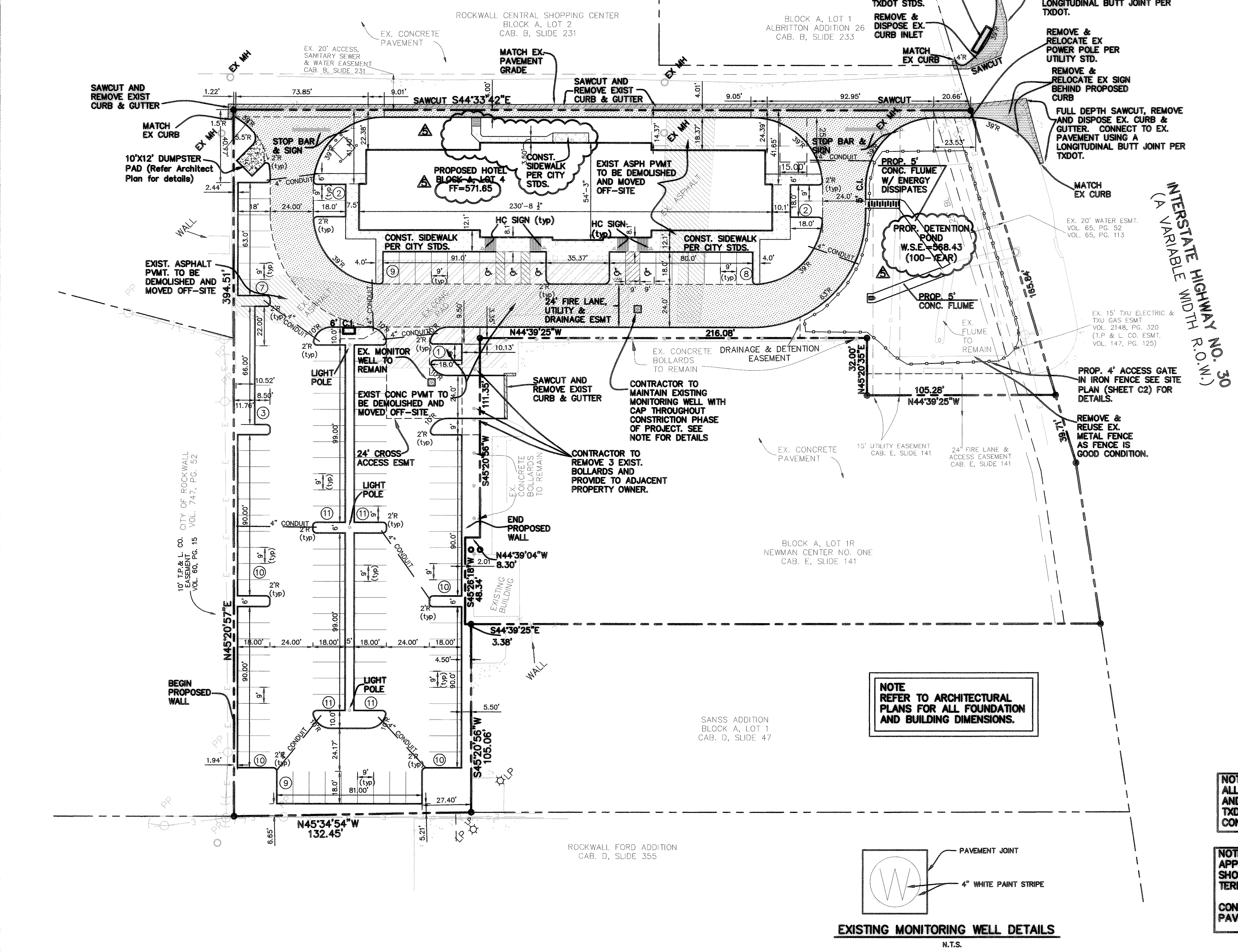
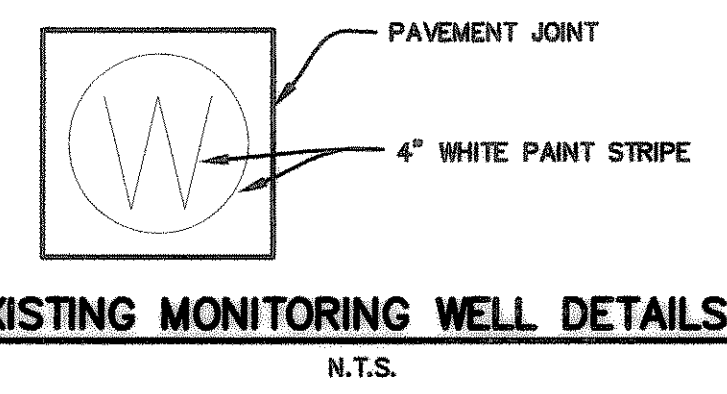
NOTE
 ALL WORK NEEDS TO MEET TXDOT STANDARDS AND SPECIFICATIONS IF OR WHEN WORKING IN TXDOT RIGHT OF WAY, INCLUDING EROSION CONTROL PLANS.

NOTE
 APPROXIMATE LOCATION OF MONITORING WELL SHOWN ON PLANS PER SITE PLAN FROM TERRACON PROJECT NO. 94067151B.
 CONTRACTOR TO MARK LOCATION OF WELLS ON PAVEMENT PER DETAIL THIS SHEET.

PAVING LEGEND

- DUMPSTER PAD PAVEMENT: 8" - 4000 P.S.I. CONCRETE PAVEMENT WITH #3 BARS AT 18" O.C.B.W. ON 8" LIME STABILIZED SUBGRADE (30 LBS/SY) COMPACTED TO BETWEEN 98% AND 102% OF STANDARD PROCTOR DENSITY, AT 3% ABOVE OPTIMUM MOISTURE CONTENT (ASTM D698).
- STANDARD DUTY PAVEMENT: 5" - 4000 P.S.I. CONCRETE PAVEMENT WITH #3 BARS AT 18" O.C.B.W. ON 8" LIME STABILIZED SUBGRADE (30 LBS/SY) COMPACTED TO BETWEEN 98% AND 102% OF STANDARD PROCTOR DENSITY, AT 3% ABOVE OPTIMUM MOISTURE CONTENT (ASTM D698). CONFORMANCE TO TXDOT ITEM 260 IS REQUIRED.
- HEAVY DUTY PAVEMENT: 6" - 4000 P.S.I. CONCRETE PAVEMENT WITH #3 BARS AT 18" O.C.B.W. ON 8" LIME STABILIZED SUBGRADE (30 LBS/SY) COMPACTED TO BETWEEN 98% AND 102% OF STANDARD PROCTOR DENSITY, AT 3% ABOVE OPTIMUM MOISTURE CONTENT (ASTM D698). CONFORMANCE TO TXDOT ITEM 260 IS REQUIRED FOR SUBGRADE. FIRELANE: 6 SACK MIX MINIMUM FOR MACHINE POURED AND 6 1/2 SACK MIX MINIMUM FOR HAND POURED.
- 4" - 3500 P.S.I. CONCRETE SIDEWALK REINFORCED WITH #3 BARS AT 24" O.C.B.W. WITH 1 1/2" SAND BASE, ON 6" SUBGRADE COMPACTED TO 95% STANDARD PROCTOR DENSITY PER ASTM D698.
- PROPOSED CURB
- SCH. 40 PVC IRRIGATION SLEEVES, MAX 24" BELOW TOP OF PAVEMENT TURN UP AND CAP ENDS AT FINISHED GRADE
- EXIST. ASPHALT PWMT. TO BE DEMOLISHED AND REMOVED OFF-SITE.
- EXIST. CONC. PWMT. TO BE DEMOLISHED AND REMOVED OFF-SITE.

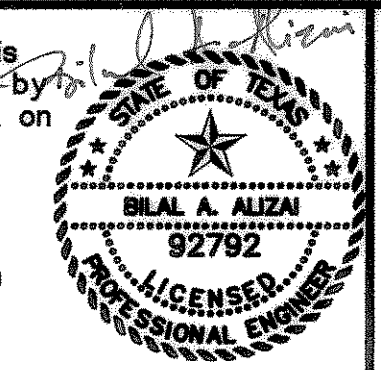
NOTE
 REFER TO ARCHITECTURAL PLANS FOR ALL FOUNDATION AND BUILDING DIMENSIONS.



BENCHMARKS:
 B.M. #1
 SQUARE CUT ON TOP OF CURB ON THE SOUTH END OF A 15 FOOT CURB INLET APPROXIMATELY 77 FEET NORTHEAST OF THE SOUTH CORNER OF BLOCK A, LOT 2, NEWMAN CENTER NO. ONE. ELEV. = 565.46
 B.M. #2
 SQUARE CUT IN THE CENTER OF A 15 FOOT CURB INLET APPROXIMATELY 59 FEET NORTHWEST OF THE SOUTH CORNER OF BLOCK A, LOT 2, NEWMAN CENTER NO. ONE. ELEV. = 566.95

NO.	REVISIONS DURING CONSTRUCTION	BY	DATE	NO.	REVISIONS DURING PLAN REVIEW	BY	DATE
				4	REVISED PER CITY COMMENTS	MPC	8/16/06
				3	REVISED PER CITY COMMENTS	MPC	8/02/06
				2	REVISED PER CITY COMMENTS	MPC	7/31/06
5	REVISED PER ARCHITECTS COMMENTS	RPW	6/20/07	1	REVISED PER CITY COMMENTS	MPC	7/10/06

The seal appearing on this document was authorized by Bilal A. Alzai, P.E. 92792 on 08/16/2007. Alteration of a sealed document without proper notification to the responsible engineer is an offense under the Texas Engineering Practice Act.



Jones & Boyd, Inc.
 17090 Dallas Parkway, Suite 200
 Dallas, Texas 75248
 972.248.7616 office
 972.248.1414 fax
 www.jones-boyd.com

- Engineering
- Surveying
- Planning
- Landscape Architecture
- Construction Management

PAVING & DIMENSION CONTROL PLAN
 BLOCK A, LOT 4
 NEWMAN CENTER NO. ONE
 CITY OF ROCKWALL, ROCKWALL COUNTY, TEXAS

PROJECT NO. QUA003
 SHEET NO. C3

Plotted by: williams Plot Date: 9/24/2007 10:11 AM
 Drawing: H:\Projects\QUA003\QUA003PAV.dwg Saved By: rwygal Save Time: 8/23/2007 5:09 PM