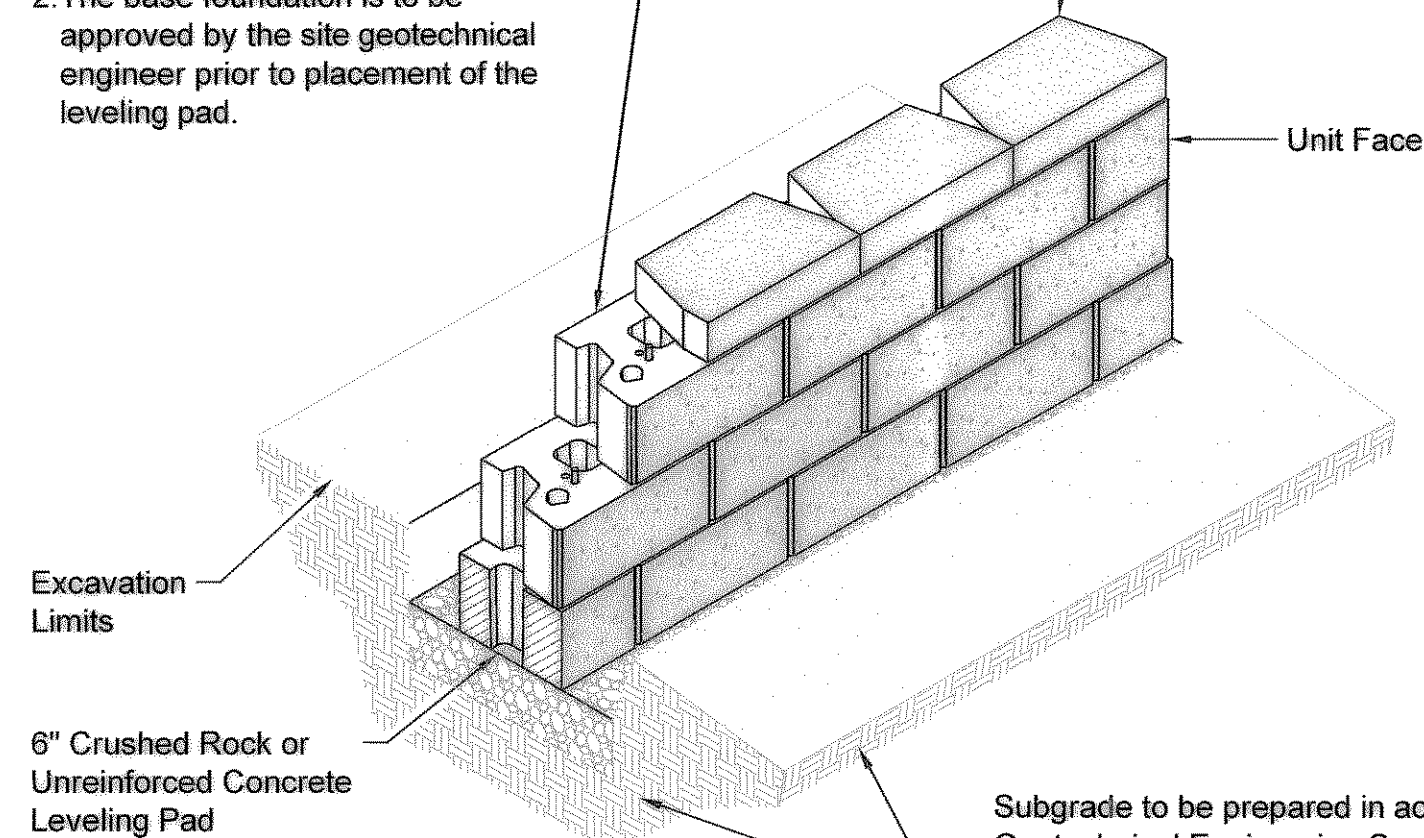


Base Leveling Pad Notes:

1. The leveling pad is to be constructed of crushed stone or 2,000 psi unreinforced concrete

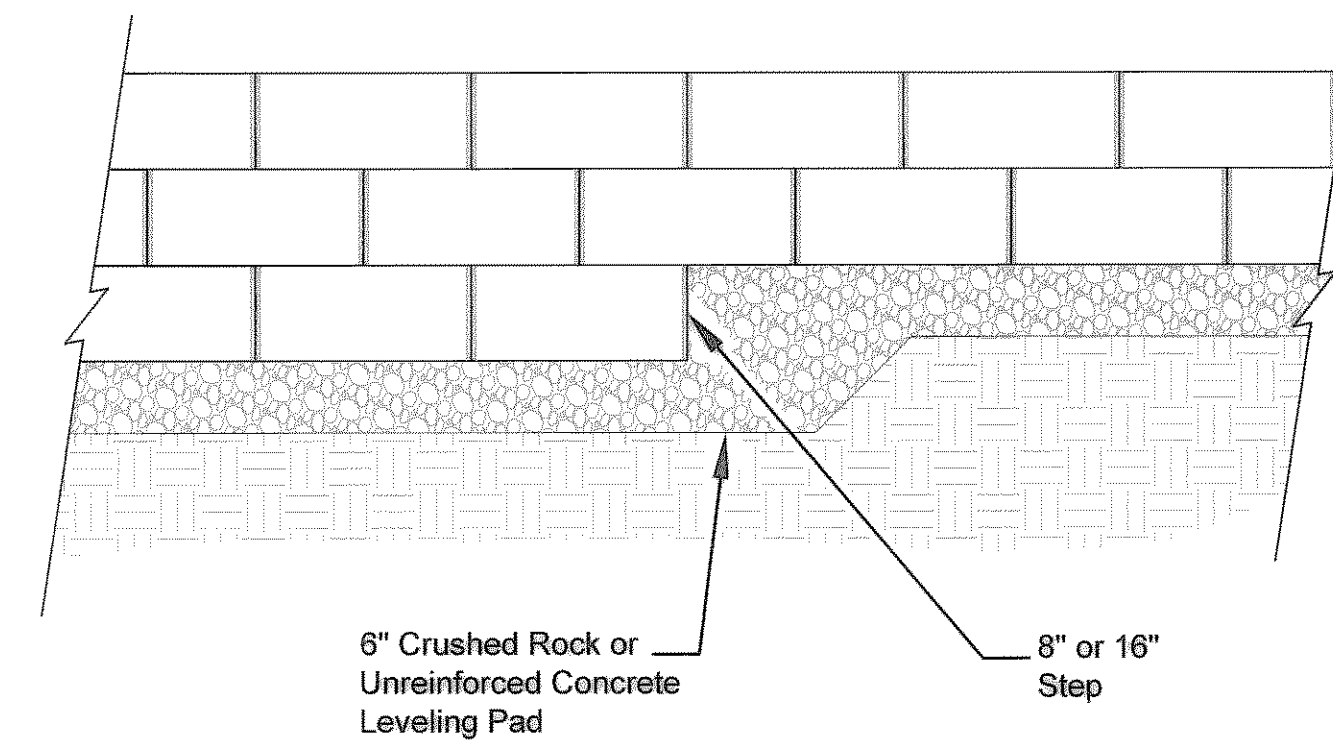
2. The base foundation is to be approved by the site geotechnical engineer prior to placement of the leveling pad.

Compac Unit		Cap Unit	
Width:	18"	Width:	18"
*Depth:	12"	*Depth:	10 1/2"
Height:	8"	Height:	4"
*Weight:	90 lbs	*Weight:	50 lbs

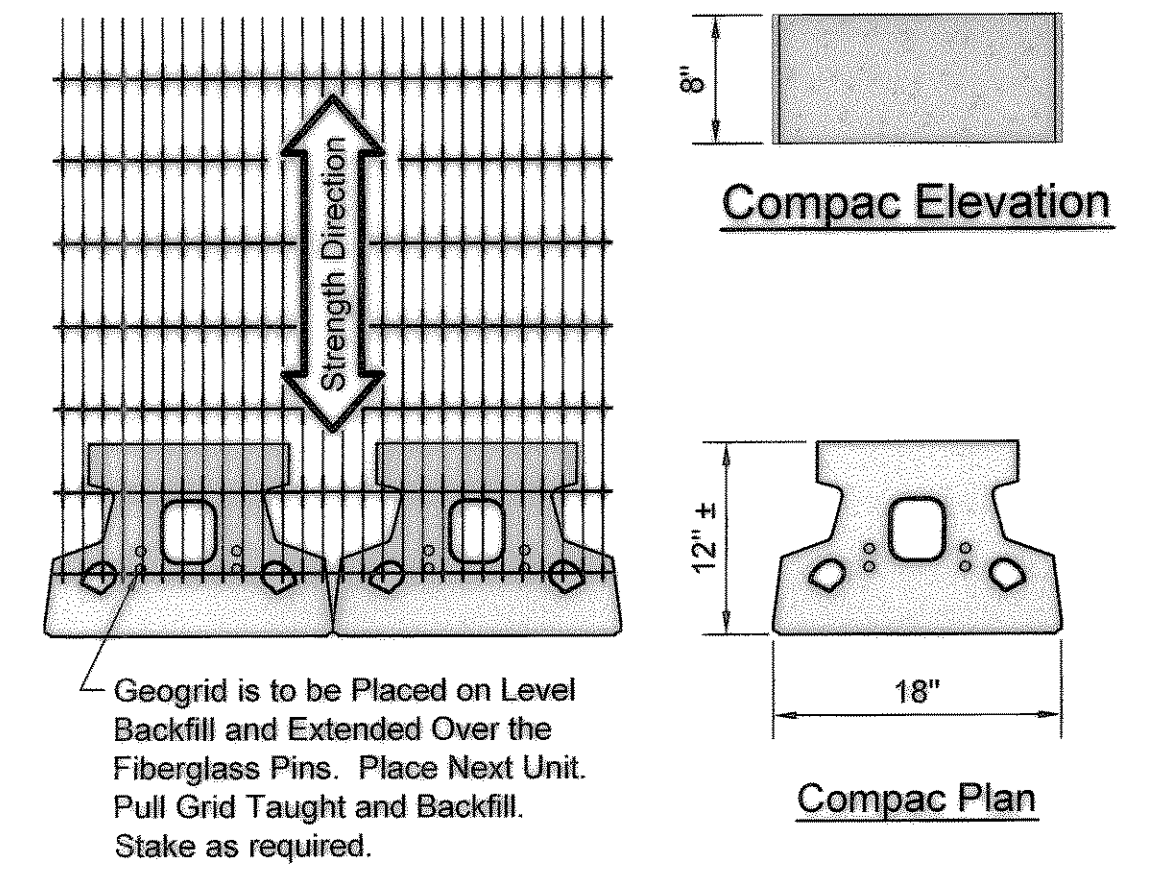


Compac Unit/Base Pad Isometric Section View

* Dimensions & Weight May Vary by Region



Elevation

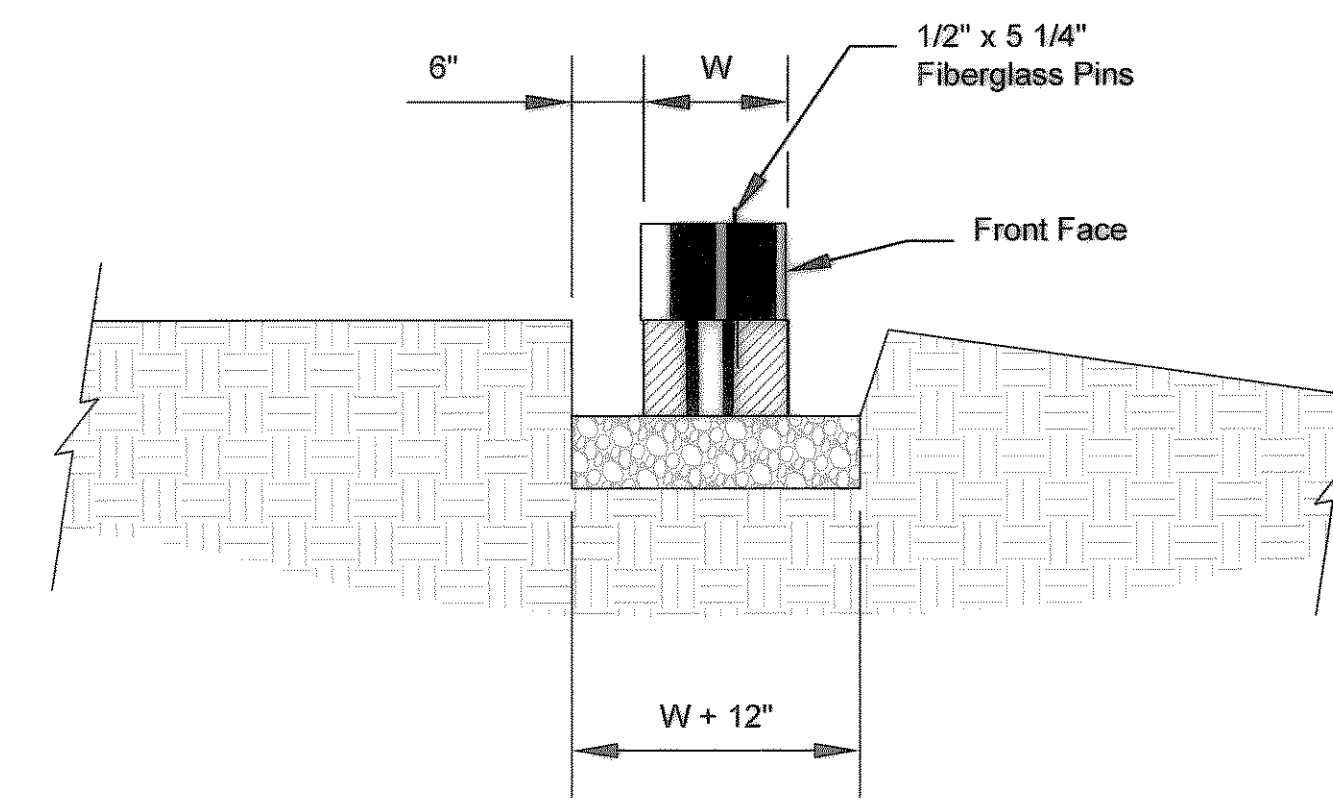


Grid & Pin Connection

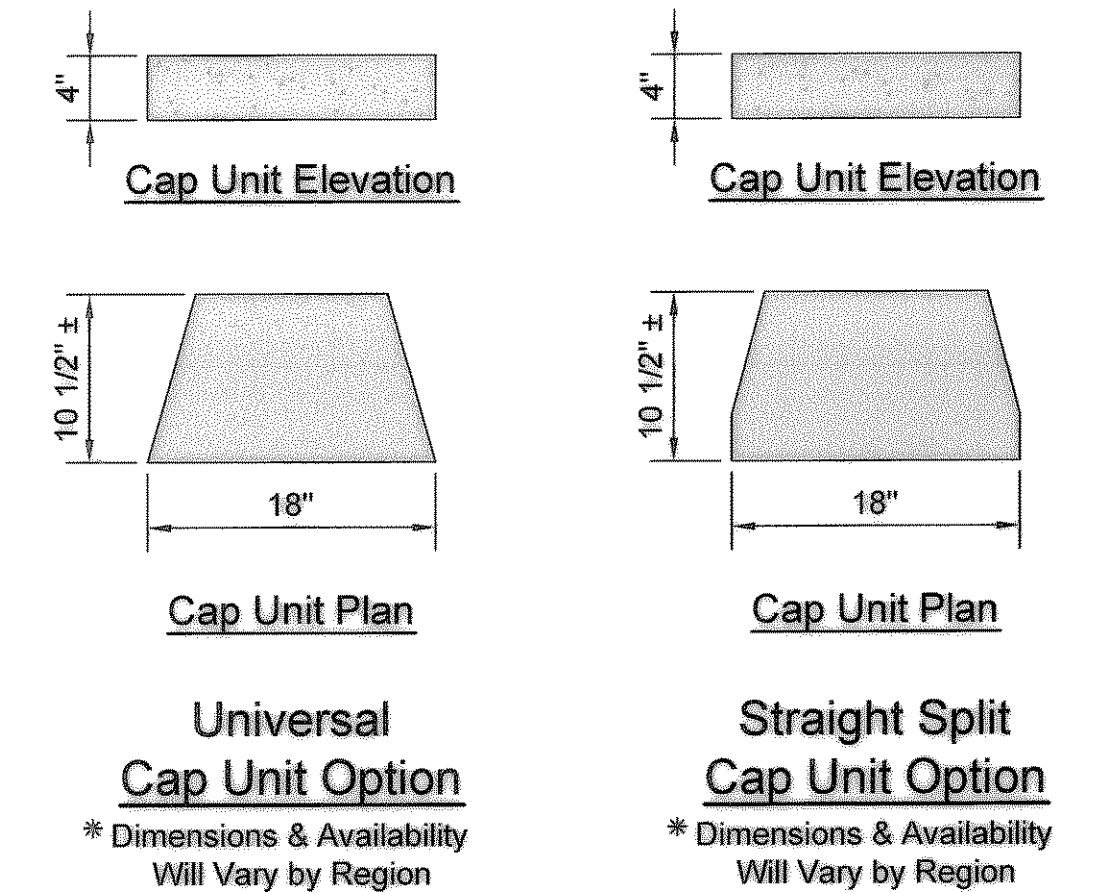
Compac Unit
* Dimensions May Vary by Region

Note:

1. The leveling pad is to be constructed of crushed stone or 2000 psi ± unreinforced concrete.



Section



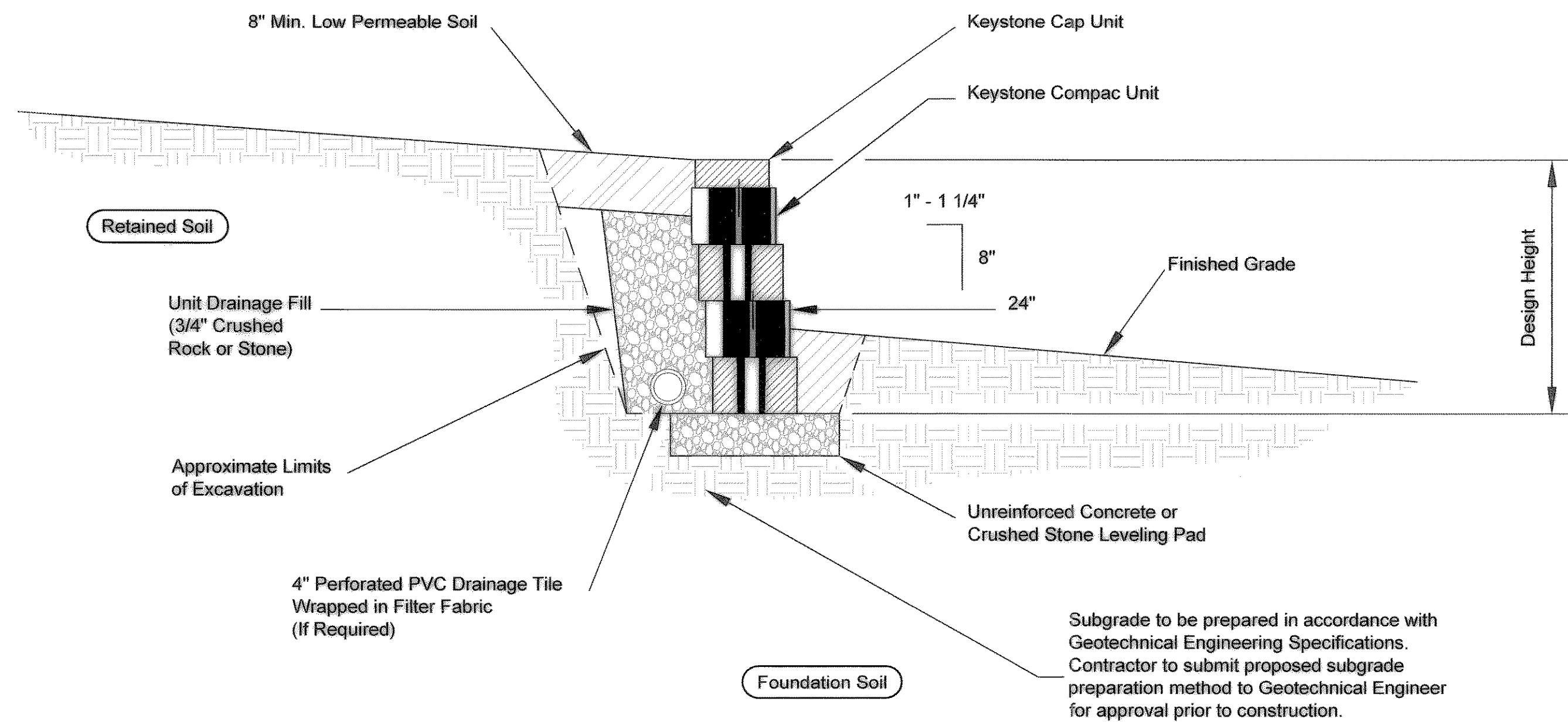
Universal Cap Unit Option
* Dimensions & Availability Will Vary by Region

Straight Split Cap Unit Option
* Dimensions & Availability Will Vary by Region

"AS-BUILT" PLANS

NOTE: THE INTENT OF THE OWNER AND ENGINEER WAS TO CONSTRUCT THE IMPROVEMENTS ACCORDING TO THESE PLANS AS APPROVED BY THE CITY OF ROCKWALL. THE CONSTRUCTION OF ALIGNMENTS AND GRADES WERE VERIFIED BY JONES & BOYD IN ACCORDANCE TO THESE DOCUMENTS. WE ARE NOT AWARE OF ANY CHANGES OR REVISIONS TO THESE PLANS DURING CONSTRUCTION EXCEPT AS SHOWN ON THESE DOCUMENTS.

NOTES.
NO PART OF WALL (FOOTING, TIEBACK, OR EDGE) CAN BE IN EASEMENT, R.O.W., OR OUTSIDE PROPERTY.



Typical Gravity Wall Section

Compac Unit - 1" Setback

BENCHMARKS:

B.M. #1

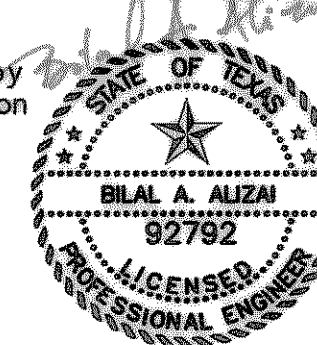
SQUARE CUT ON TOP OF CURB ON THE SOUTH END OF A 15 FOOT CURB INLET APPROXIMATELY 77 FEET NORTHEAST OF THE SOUTH CORNER OF BLOCK A, LOT 2, NEWMAN CENTER NO. ONE. ELEV. = 565.46

B.M. #2

SQUARE CUT IN THE CENTER OF A 15 FOOT CURB INLET APPROXIMATELY 59 FEET NORTHWEST OF THE SOUTH CORNER OF BLOCK A, LOT 2, NEWMAN CENTER NO. ONE. ELEV. = 566.95

NO.	REVISIONS DURING CONSTRUCTION	BY	DATE	NO.	REVISIONS DURING PLAN REVIEW	BY	DATE
				2	REVISED PER CITY COMMENTS	MPC	7/31/06

The seal appearing on this document was authorized by Bilal A. Alizai, P.E. 92792 on September 26, 2006. Alteration of a sealed document without proper notification to the responsible engineer is an offense under the Texas Engineering Practice Act.



Jones & Boyd, Inc.
17090 Dallas Parkway, Suite 200
Dallas, Texas 75248
972.248.7676 office
972.248.1414 fax
www.jones-boyd.com

- Engineering
- Surveying
- Planning
- Landscape Architecture
- Construction Management

RETAINING WALL DETAILS		PROJECT NO.
BLOCK A, LOT 4		QUA003
NEWMAN CENTER NO. ONE		SHEET NO.
CITY OF ROCKWALL, ROCKWALL COUNTY, TEXAS		C11