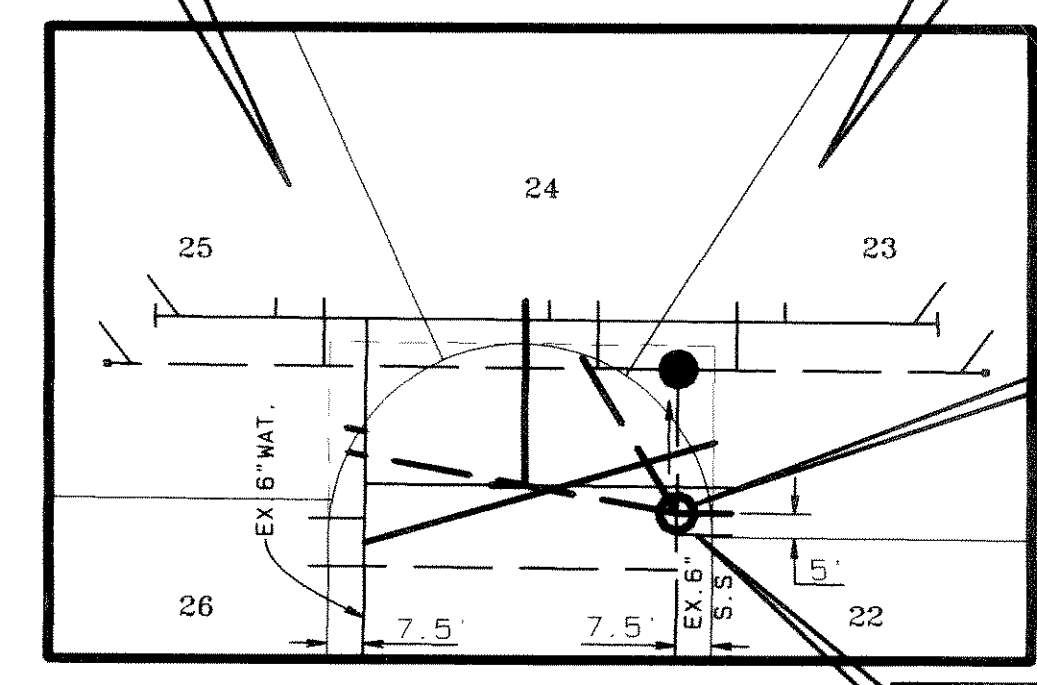


REVISION	DATE	DESCRIPTION	DRAWN BY	CHECKED BY

REMOVE AND DISPOSE OF OFFSITE ALL EXIST. WATER LINES AND SERVICES OUTSIDE THE PROPOSED PRIVATE STREET R.O.W. CONST. NEW WATER SERVICES AS SHOWN FOR LOTS 23, 24 & 25.

REMOVE AND DISPOSE OF OFFSITE EXIST. SANITARY SEWER LINES, SERVICE LATERALS AND SEWER MANHOLE. UPSTREAM OF NEW MANHOLE. CONSTRUCT NEW MANHOLE AND NEW SERVICES TO LOTS 23, 24 & 25.



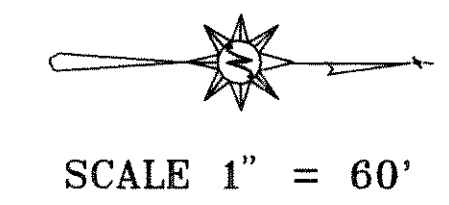
COMMON AREA NO.5
SCALE 1" = 40'

REMOVE AND DISPOSE OF OFFSITE INSIDE THIS AREA ALL WATER AND SANITARY SEWER LINES, SERVICE LATERALS, SEWER MANHOLES TO WEST LINE OF TURTLE COVE BLVD. PLUG WATER & SEWER LINES AT WEST LINE OF TURTLE COVE BLVD. STUBOUT ON EXISTING MANHOLE WILL SERVE LOT 6.

RELOCATE F.H. TO COMMON LINE BETWEEN LOT 5 AND 6

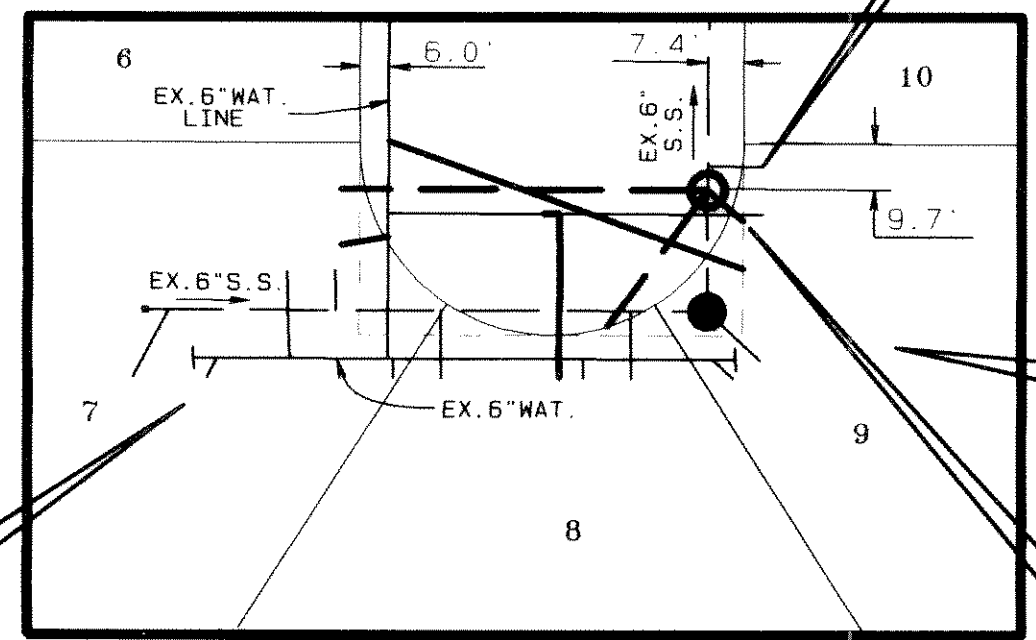
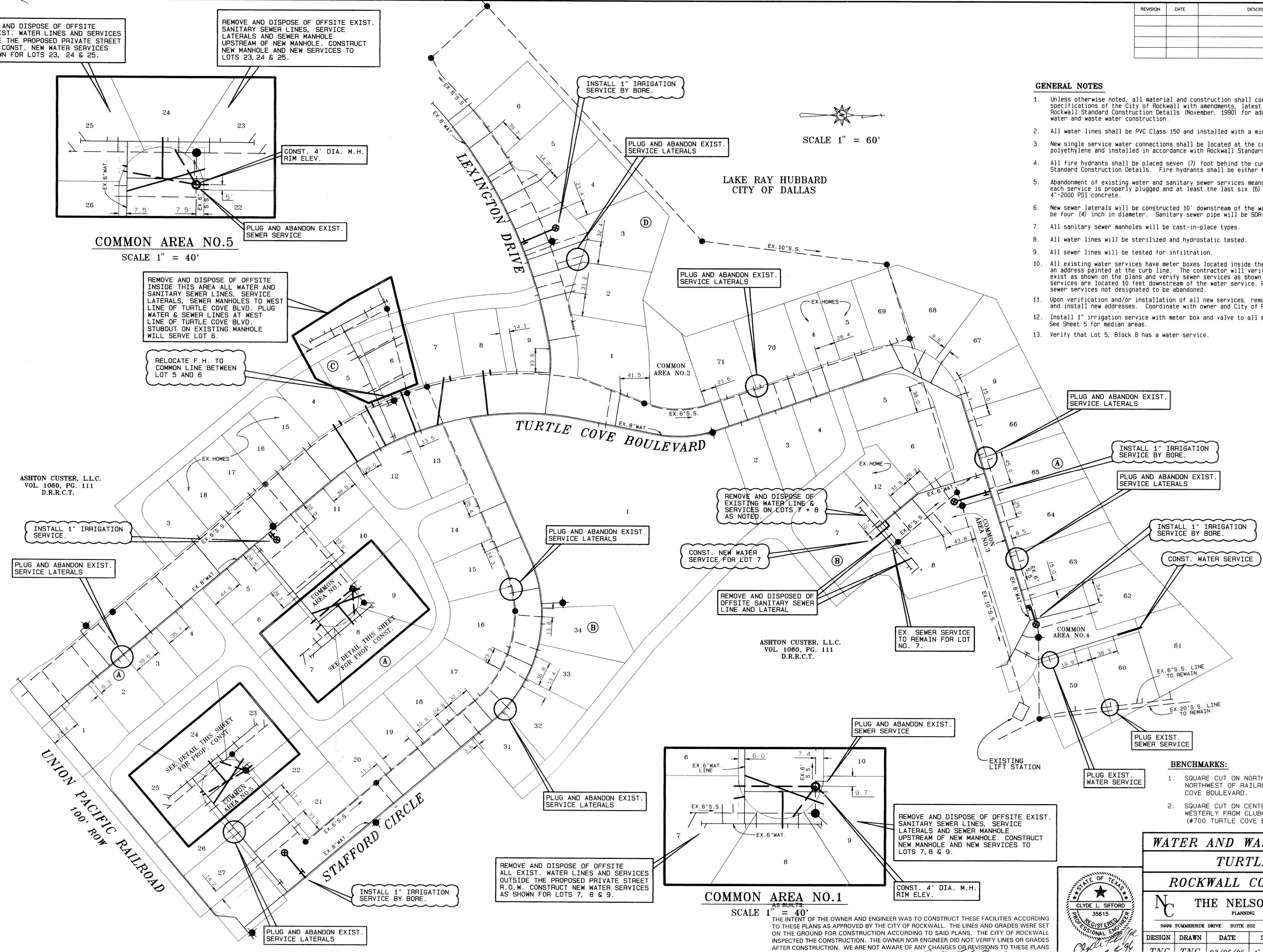
ASHTON CUSTER, L.L.C.
VOL. 1060, PG. 111
D.R.R.C.T.

LAKE RAY HUBBARD
CITY OF DALLAS



GENERAL NOTES

1. Unless otherwise noted, all material and construction shall conform to the construction specifications of the City of Rockwall with amendments, latest edition. Refer to the City of Rockwall Standard Construction Details (November, 1990) for additional requirements for water and waste water construction.
2. All water lines shall be PVC Class 150 and installed with a minimum of three feet of cover.
3. New single service water connections shall be located at the center of the lot, be one (1) inch polyethylene and installed in accordance with Rockwall Standard Construction Details.
4. All fire hydrants shall be placed seven (7) foot behind the curb in accordance with Rockwall Standard Construction Details. Fire hydrants shall be either Muller or American Darling.
5. Abandonment of existing water and sanitary sewer services means to assure that the end of each service is properly plugged and at least the last six (6) foot of the service is encased in 4"-2000 PSI concrete.
6. New sewer laterals will be constructed 10' downstream of the water service. Each lateral will be four (4) inch in diameter. Sanitary sewer pipe will be SDR-35.
7. All sanitary sewer manholes will be cast-in-place types.
8. All water lines will be sterilized and hydrostatic tested.
9. All sewer lines will be tested for infiltration.
10. All existing water services have meter boxes located inside the lots approximately in front of an address painted at the curb line. The contractor will verify that water services and boxes exist as shown on the plans and verify sewer services as shown on this plan also. Sewer services are located 10 feet downstream of the water service. Place EMS devices on all sanitary sewer services not designated to be abandoned.
11. Upon verification and/or installation of all new services, remove painted curb addresses and install new addresses. Coordinate with owner and City of Rockwall.
12. Install 1" irrigation service with meter box and valve to all median areas. See Sheet 5 for median areas.
13. Verify that Lot 5, Block B has a water service.



COMMON AREA NO.1
SCALE 1" = 40'

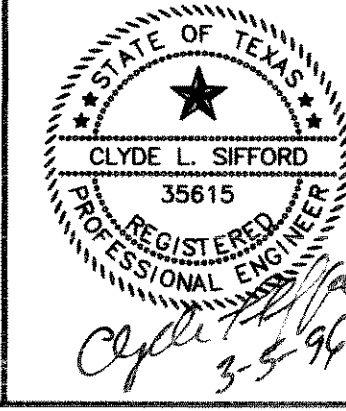
ASHTON CUSTER, L.L.C.
VOL. 1060, PG. 111
D.R.R.C.T.

THE INTENT OF THE OWNER AND ENGINEER WAS TO CONSTRUCT THESE FACILITIES ACCORDING TO THESE PLANS AS APPROVED BY THE CITY OF ROCKWALL. THE LINES AND GRADES WERE SET ON THE GROUND FOR CONSTRUCTION ACCORDING TO SAID PLANS. THE CITY OF ROCKWALL INSPECTED THE CONSTRUCTION. THE OWNER NOR ENGINEER DID NOT VERIFY LINES OR GRADES AFTER CONSTRUCTION. WE ARE NOT AWARE OF ANY CHANGES OR REVISIONS TO THESE PLANS DURING CONSTRUCTION EXCEPT AS NOTED.

- BENCHMARKS:**
1. SQUARE CUT ON NORTHEAST CURB ± 150' NORTHWEST OF RAILROAD ON TURTLE COVE BOULEVARD. ELEV. 469.36
 2. SQUARE CUT ON CENTERLINE OF INLET WESTERLY FROM CLUBHOUSE ENTRANCE (#700 TURTLE COVE BLVD). ELEV. 447.21

WATER AND WASTEWATER PLAN
TURTLE COVE
ROCKWALL COUNTY, TEXAS

THE NELSON CORPORATION
PLANNING ENGINEERING SURVEYING



DESIGN	DRAWN	DATE	SCALE	FILE	SHEET NO.
TNC	TNC	03/05/96	1" = 60'	95115.00	7