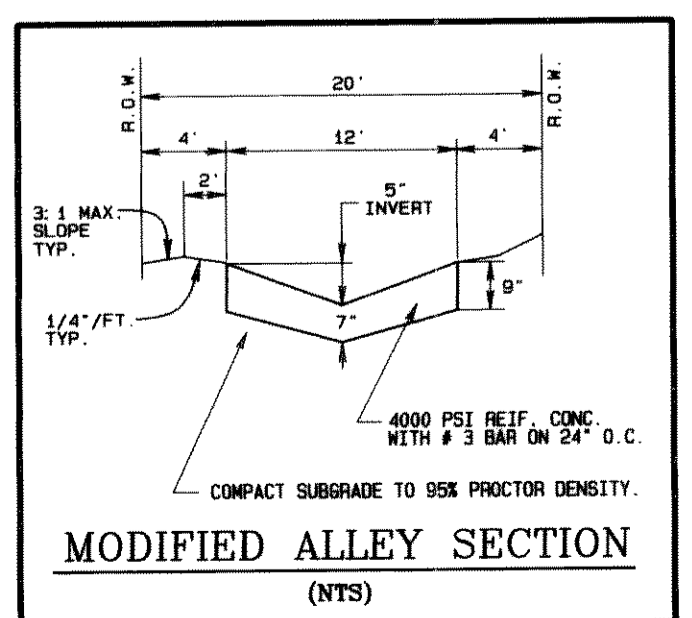
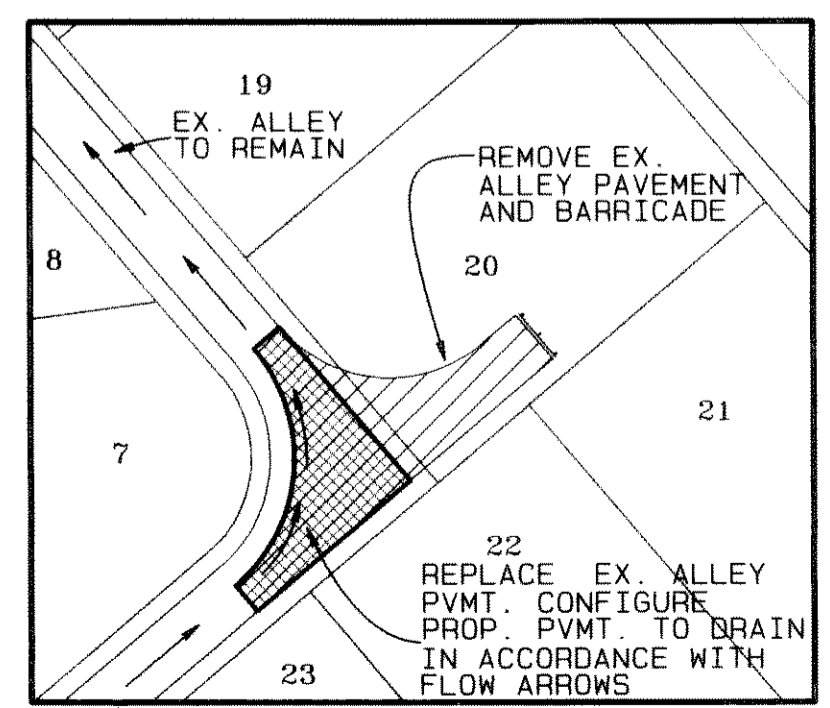
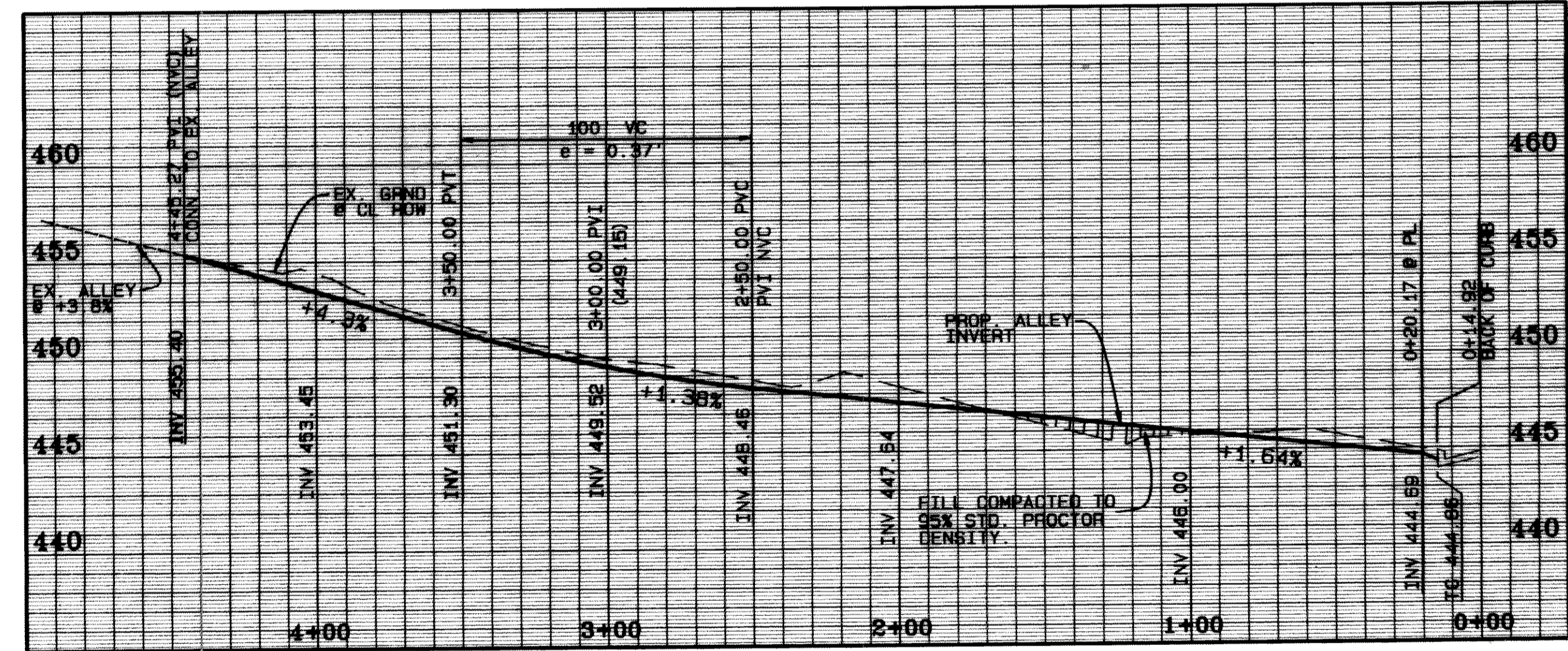
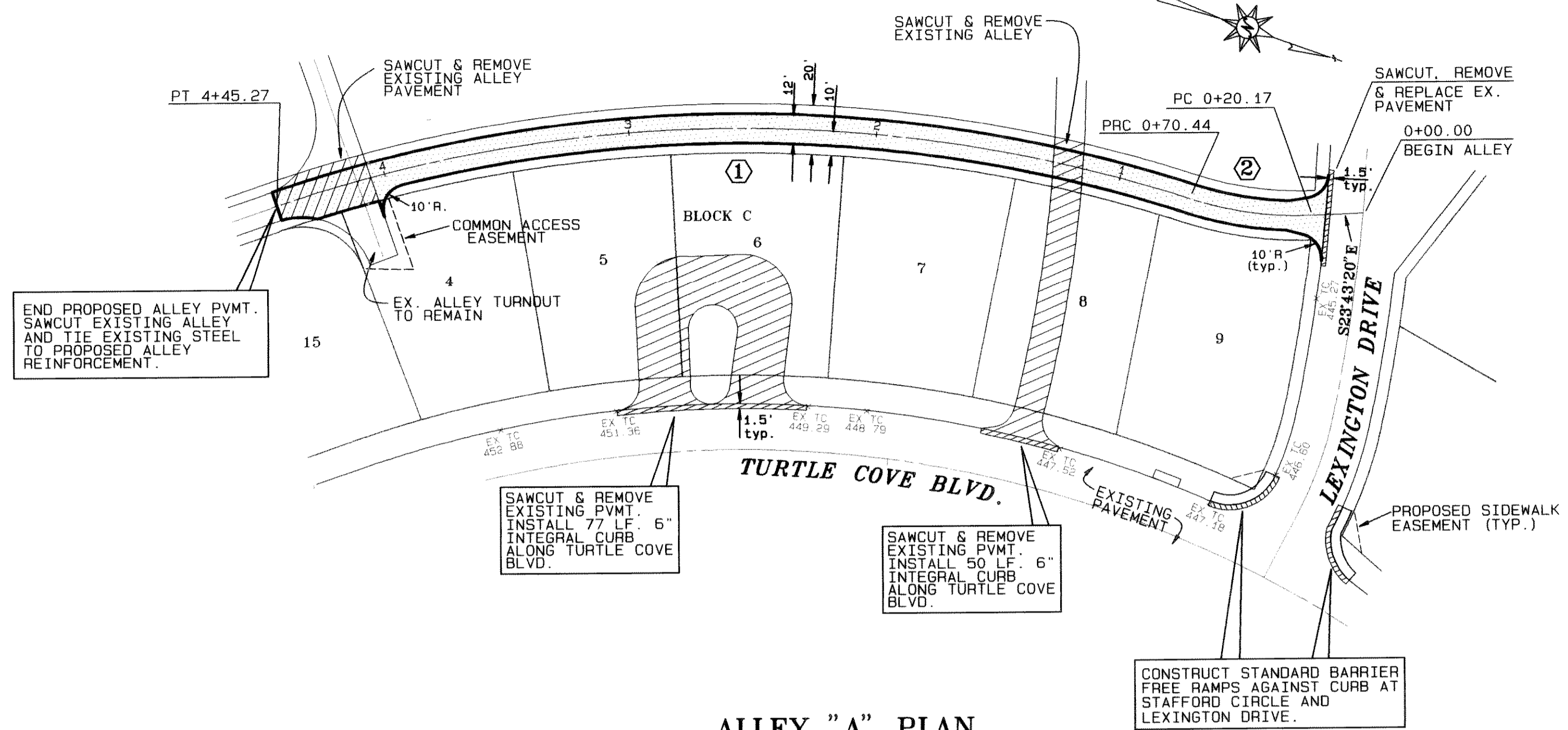
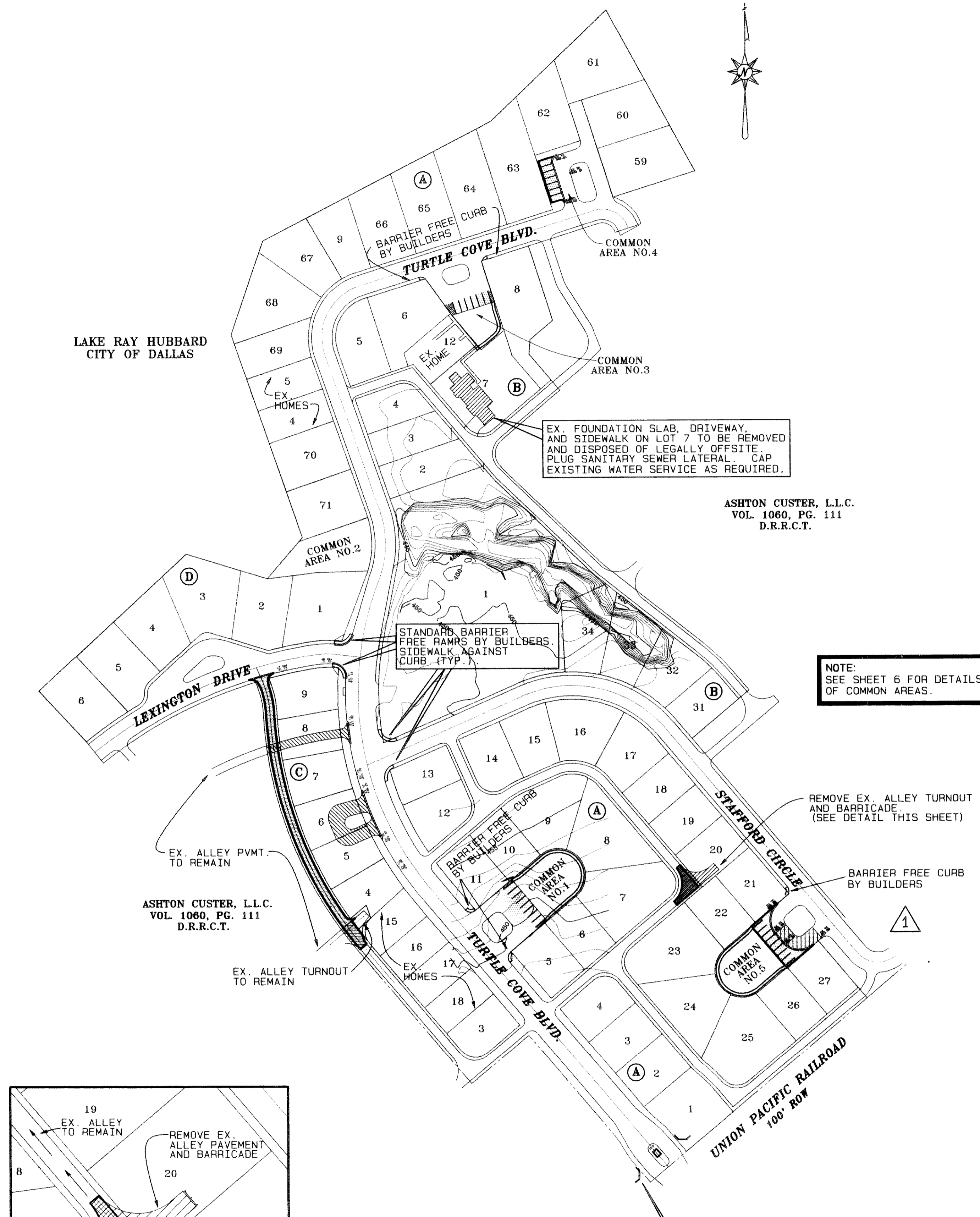


| REVISION | DATE    | DESCRIPTION  | DRAWN BY | CHECKED BY |
|----------|---------|--|----------|------------|
| Δ        | 4/16/96 | DELETE ALLEY "B".<br>ADJUST PAVING FOR COMMON AREA #5. | PBS&J    | CLS        |

| CENTERLINE CURVE DATA |           |         |         |         |
|-----------------------|-----------|---------|---------|---------|
| NO.                   | DELTA     | RADIUS  | TANGENT | LENGTH  |
| 1                     | 37°01'42" | 580.00' | 194.22' | 374.83' |
| 2                     | 20°34'23" | 140.00' | 25.41'  | 50.27'  |



- BENCHMARKS:**
- SQUARE CUT ON NORTHEAST CURB ± 150' NORTHWEST OF RAILROAD ON TURTLE COVE BOULEVARD. ELEV. 469.36
  - SQUARE CUT ON CENTERLINE OF INLET WESTERLY FROM CLUBHOUSE ENTRANCE (#700 TURTLE COVE BLVD). ELEV. 447.21

**PAVING PLAN & PROFILE**  
**TURTLE COVE**  
**ROCKWALL COUNTY, TEXAS**

**THE NELSON CORPORATION**  
PLANNING ENGINEERING SURVEYING

5999 SUMMERSIDE DRIVE SUITE 202 DALLAS, TEXAS 75252 (214) 380-2805

| DESIGN | DRAWN | DATE     | SCALE    | FILE     | SHEET NO. |
|--------|-------|----------|----------|----------|-----------|
| TNC    | TNC   | 04/16/96 | AS NOTED | 95115.00 | 5         |

