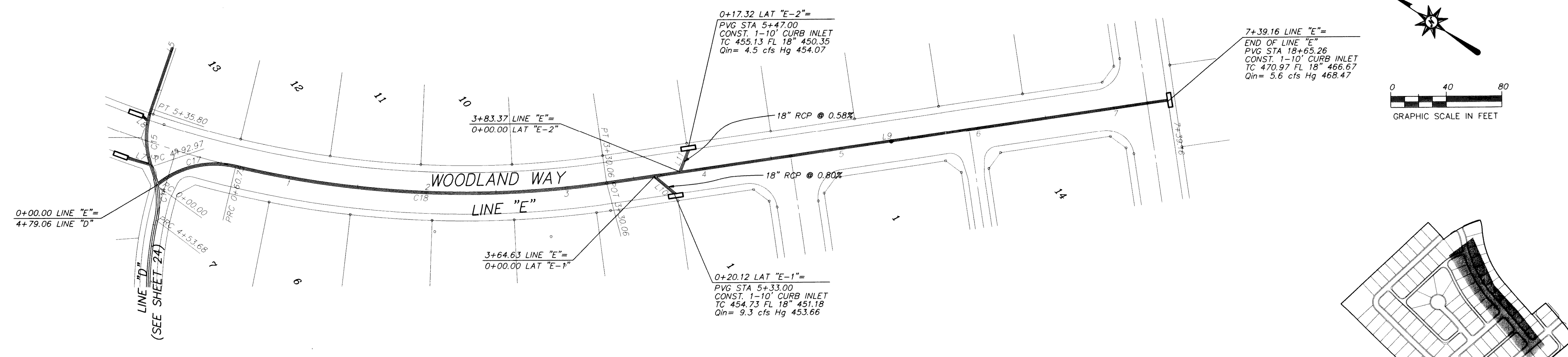


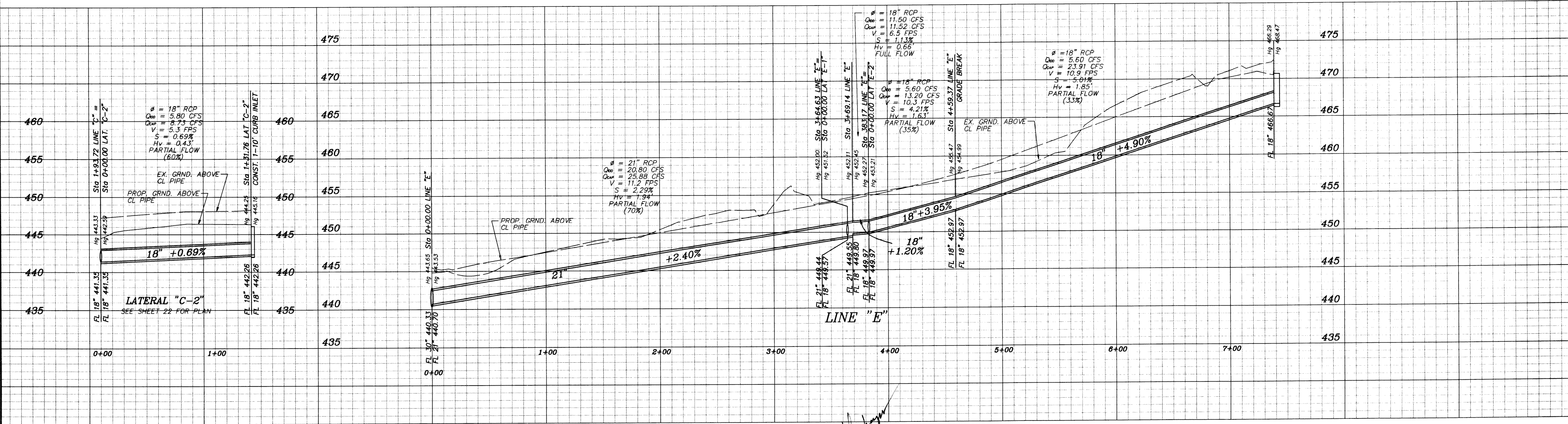
P B S & J, INC. * DALLAS, TEXAS



CURVE	RADIUS	DELTA	ARC	CHORD BEARING	CHORD
C17	65.00'	53°33'07"	60.75'	S45°27'13"E	58.57'
C18	710.00'	21°43'58"	269.31'	S29°32'38"E	267.70'

LINE	BEARING
L9	N40°24'39"W
L10	S07°47'37"W
L11	S79°35'21"W

NOTE: NOTIFY DWU CONSTRUCTION INSPECTION AT (214) 948-4562 FORTY EIGHT (48) HOURS PRIOR TO CONSTRUCTION. ALSO, SEE DWU DETAILS FOR TYPICAL STORM SEWER INSTALLATION ON DRAINAGE AREA MAP



RECORD DRAWING
 DATE: 7-28-00
 THIS RECORD DRAWING HEREIN REFLECTS TO THE BEST OF THE DESIGN ENGINEER'S KNOWLEDGE THE APPROXIMATE LOCATION OF THE CONSTRUCTED WORK USING INFORMATION AS PROVIDED BY THE CONTRACTOR(S).

- SQUARE CUT ON NORTHEAST CURB ± 150' NORTHWEST OF RAILROAD ON TURTLE COVE BOULEVARD
ELEV. 469.36
- SQUARE CUT ON CENTERLINE OF INLET WESTERLY FROM CLUBHOUSE ENTRANCE
ELEV. 447.21

NO.	REVISION	BY	DATE

THE SEAL APPEARING ON THIS DOCUMENT HAS AUTHORIZED BY BRYAN L. UMBERGER, P.E. #82474

SCALE: AS SHOWN
 DESIGNED: PBS&J
 DRAWN: PBS&J
 DATE: _____
 DWG FILE: _____

PBS&J
 5999 SUMMERSIDE DRIVE ~ SUITE 202
 DALLAS, TEXAS 75252
 PH. (972) 380-2605 FAX (972) 380-2609

STORM SEWER PLAN & PROFILE
 TURTLE COVE ADDITION, PHASE 3
 ROCKWALL
 ROCKWALL COUNTY, TEXAS
 JOB NO. 95115.02
 SHEET 24 of 28

TURTLE COVE ADDITION, PHASE 3, STORM SEWER PLAN & PROFILE