

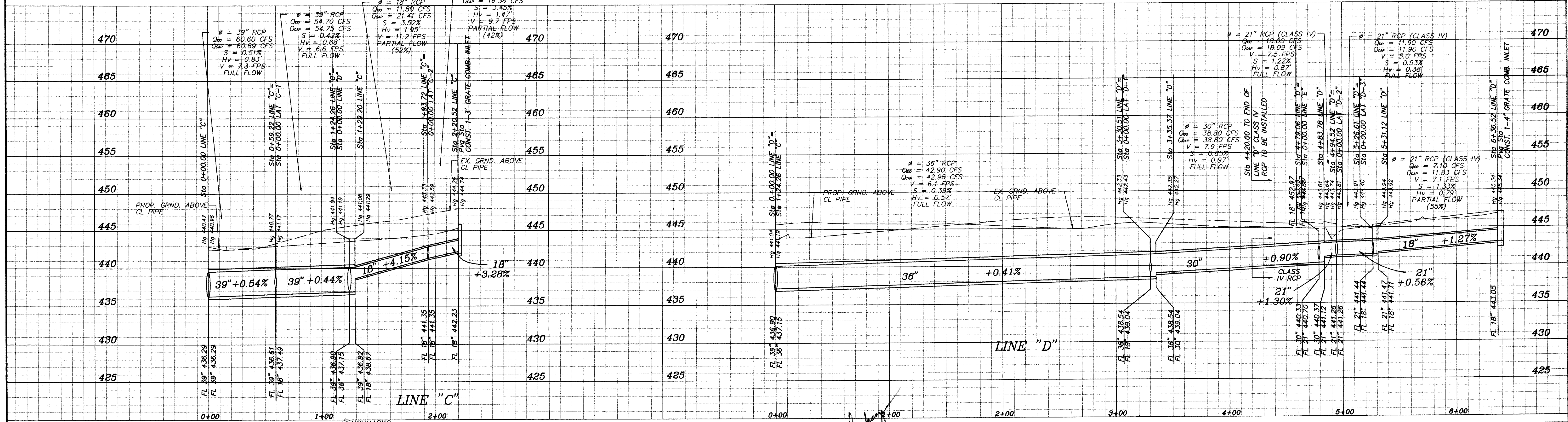
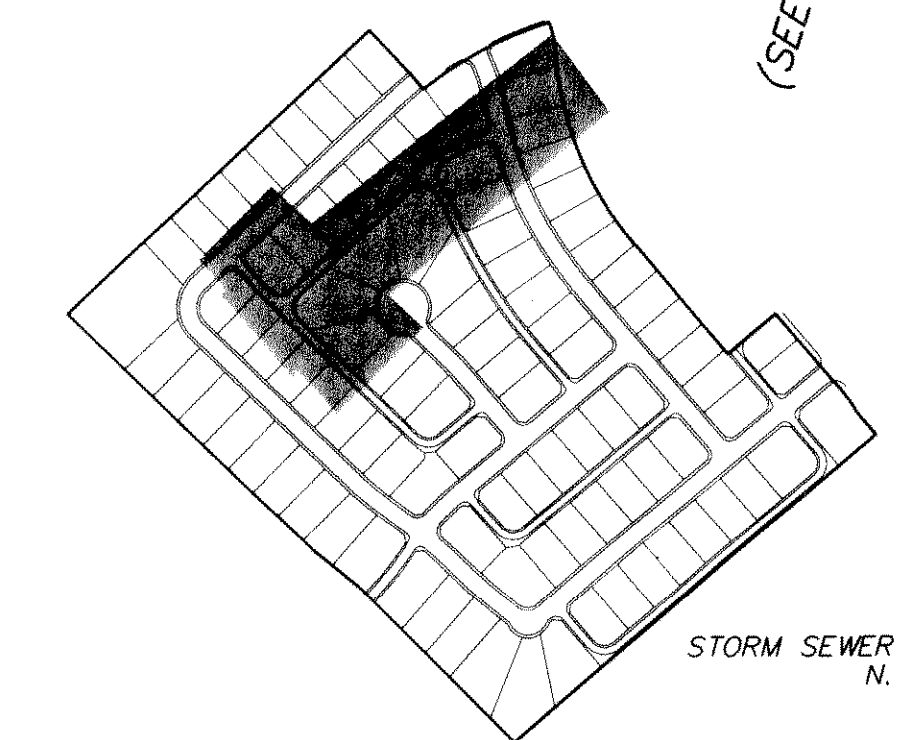
NOTE: NOTIFY DWU CONSTRUCTION INSPECTION AT (214) 948-4562 FORTY EIGHT (48) HOURS PRIOR TO CONSTRUCTION. ALSO, SEE DWU DETAILS FOR TYPICAL STORM SEWER INSTALLATION ON DRAINAGE AREA MAP

CURVE	RADIUS	DELTA	ARC	CHORD BEARING	CHORD
C10	65.00'	30°00'00"	34.03'	S58°00'28"E	33.65'
C11	65.00'	23°14'10"	26.36'	S57°10'37"E	26.18'

LINE	BEARING
L1	N43°00'28"W
L2	N45°33'32"W
L3	S76°59'32"W
L4	N75°12'30"E

CURVE	RADIUS	DELTA	ARC	CHORD BEARING	CHORD
C12	65.00'	27°26'56"	31.14'	N60°43'00"E	30.84'
C13	250.00'	23°09'06"	101.02'	N58°34'05"E	100.33'
C14	65.00'	31°02'15"	35.21'	N54°37'30"E	34.78'
C15	65.00'	37°45'11"	42.83'	N57°58'58"E	42.06'
C16	80.00'	13°59'50"	19.54'	S66°00'33"E	19.50'

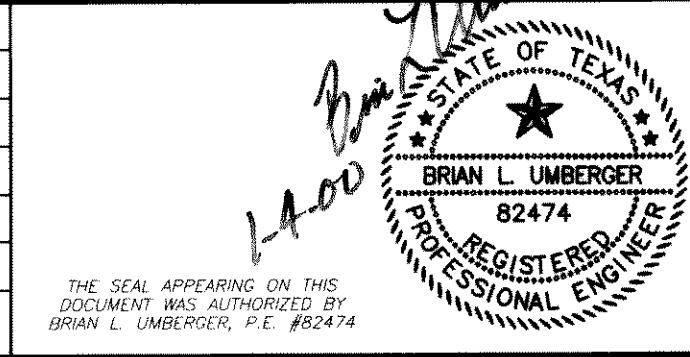
LINE	BEARING
L4	S46°59'32"W
L5	S76°51'34"W
L6	S59°00'38"E
L7	N16°03'26"W
L8	S10°44'54"W



RECORD DRAWING  
 DATE: 7-28-00  
 THIS RECORD DRAWING HEREBY REFLECTS TO THE BEST OF THE DESIGN ENGINEER'S KNOWLEDGE THE APPROXIMATE LOCATION OF THE CONSTRUCTED WORK USING INFORMATION AS PROVIDED BY THE CONTRACTOR(S).

- SQUARE CUT ON NORTHEAST CURB ± 150' NORTHWEST OF RAILROAD ON TURTLE COVE BOULEVARD ELEV. 469.36
- SQUARE CUT ON CENTERLINE OF INLET WESTERLY FROM CLUBHOUSE ENTRANCE ELEV. 447.21

NO.	REVISION	BY	DATE



SCALE: AS SHOWN  
 DESIGNED: PBSJ  
 DRAWN: PBSJ  
 DATE:  
 DWG FILE:

**PBSJ**  
 5999 SUMMERSIDE DRIVE ~ SUITE 202  
 DALLAS, TEXAS 75252  
 PH. (972) 380-2605 FAX (972) 380-2609

**STORM SEWER PLAN & PROFILE**  
 TURTLE COVE ADDITION, PHASE 3  
 ROCKWALL  
 ROCKWALL COUNTY, TEXAS  
 JOB NO. 95115.02  
 SHEET 23 OF 28