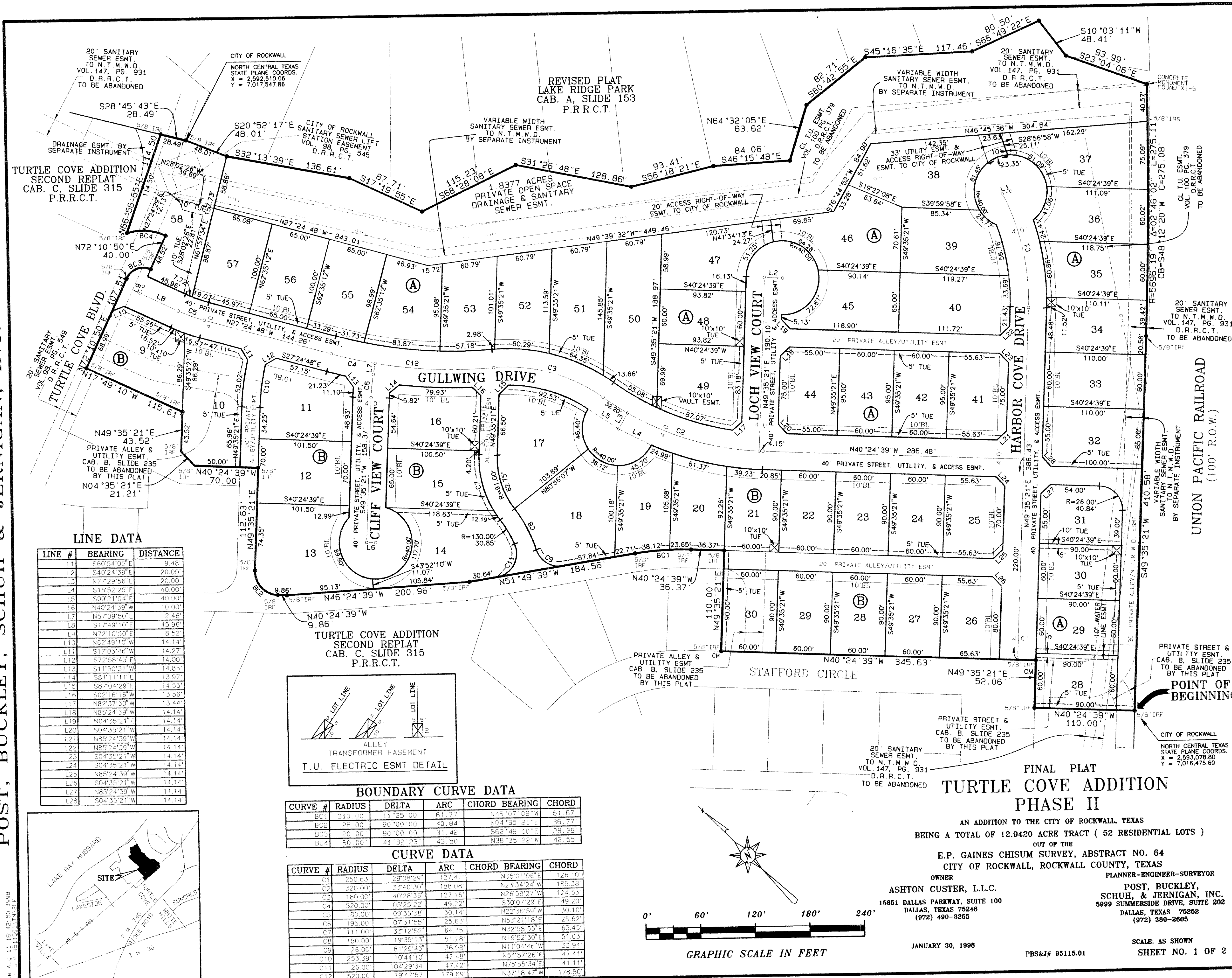
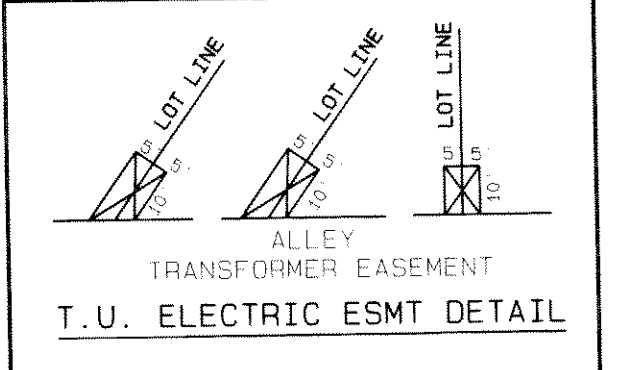


POST, BUCKLEY, SCHUH & JERNIGAN, INC. * DALLAS, TEXAS



LINE DATA

LINE #	BEARING	DISTANCE
L1	S60°54'05"E	9.45'
L2	S40°24'39"E	20.00'
L3	N72°29'58"W	20.00'
L4	S18°52'25"E	40.00'
L5	S09°21'04"E	40.00'
L6	N40°24'39"W	10.00'
L7	N5°09'50"E	12.46'
L8	S17°49'10"E	45.96'
L9	N72°10'50"E	8.52'
L10	N62°29'58"W	14.14'
L11	S17°03'48"W	14.27'
L12	S72°58'43"E	14.00'
L13	S11°50'31"W	14.85'
L14	S81°11'11"E	13.97'
L15	S87°04'29"E	14.55'
L16	S02°18'18"W	13.56'
L17	N82°37'30"W	13.44'
L18	N85°24'39"W	14.14'
L19	N04°35'21"E	14.14'
L20	S04°35'21"W	14.14'
L21	N85°24'39"W	14.14'
L22	N85°24'39"W	14.14'
L23	S04°35'21"W	14.14'
L24	S04°35'21"W	14.14'
L25	N85°24'39"W	14.14'
L26	S04°35'21"W	14.14'
L27	N85°24'39"W	14.14'
L28	S04°35'21"W	14.14'

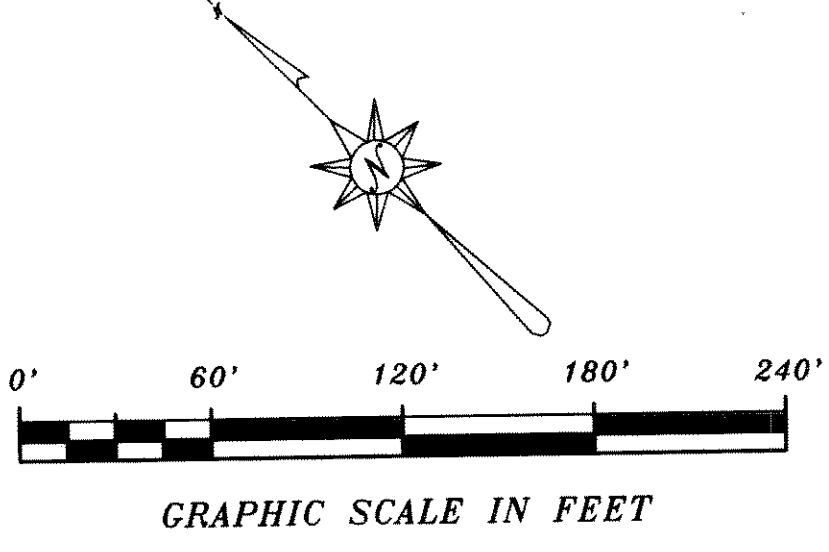
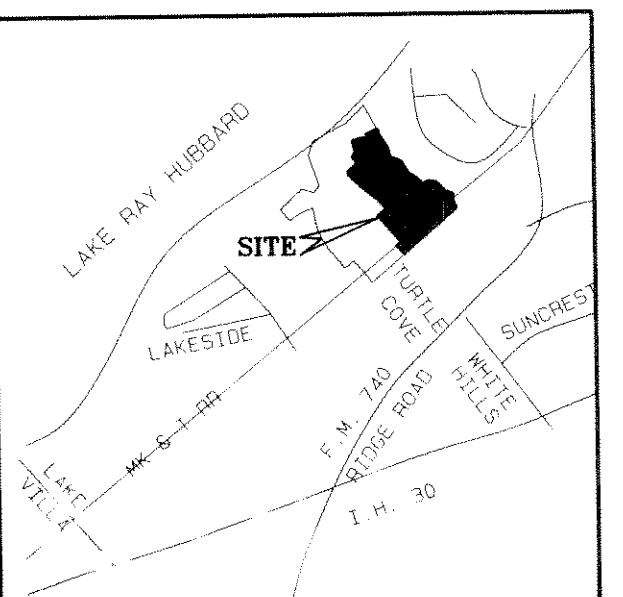


BOUNDARY CURVE DATA

CURVE #	RADIUS	DELTA	ARC	CHORD BEARING	CHORD
BC1	310.00'	11°25'00"	61.77'	N46°07'09"W	61.67'
BC2	25.00'	90°00'00"	40.84'	N04°35'21"E	36.77'
BC3	20.00'	90°00'00"	31.42'	S62°48'10"E	28.28'
BC4	60.00'	41°39'23"	43.50'	N39°39'22"W	42.55'

CURVE DATA

CURVE #	RADIUS	DELTA	ARC	CHORD BEARING	CHORD
C1	250.63'	28°08'29"	177.47'	N35°01'06"E	126.10'
C2	320.00'	35°40'30"	188.08'	N2°34'24"W	185.38'
C3	180.00'	40°29'35"	127.15'	N26°58'27"W	124.53'
C4	520.00'	05°25'22"	49.22'	S30°07'29"E	49.20'
C5	180.00'	09°35'38"	30.14'	N22°36'59"W	30.10'
C6	195.00'	07°31'55"	25.63'	N53°21'18"E	25.62'
C7	111.00'	33°12'52"	64.39'	N32°18'55"E	63.45'
C8	150.00'	19°35'13"	51.28'	N19°52'30"E	51.03'
C9	26.00'	81°29'45"	36.98'	N11°04'46"W	33.94'
C10	253.39'	10°44'10"	47.48'	N54°57'26"E	47.41'
C11	26.00'	104°29'34"	47.42'	N75°53'34"E	41.11'
C12	520.00'	19°47'57"	179.68'	N37°18'47"W	178.80'



FINAL PLAT
TURTLE COVE ADDITION
PHASE II
 AN ADDITION TO THE CITY OF ROCKWALL, TEXAS
 BEING A TOTAL OF 12.9420 ACRE TRACT (52 RESIDENTIAL LOTS)
 OUT OF THE
 E.P. GAINES CHISUM SURVEY, ABSTRACT NO. 64
 CITY OF ROCKWALL, ROCKWALL COUNTY, TEXAS
 OWNER
 ASHTON CUSTER, L.L.C.
 15851 DALLAS PARKWAY, SUITE 100
 DALLAS, TEXAS 75248
 (972) 490-3255
 PLANNER-ENGINEER-SURVEYOR
 POST, BUCKLEY,
 SCHUH, & JERNIGAN, INC.
 5099 SUMMERSIDE DRIVE, SUITE 202
 DALLAS, TEXAS 75252
 (972) 380-2605
 JANUARY 30, 1998
 SCALE: AS SHOWN
 SHEET NO. 1 OF 2