

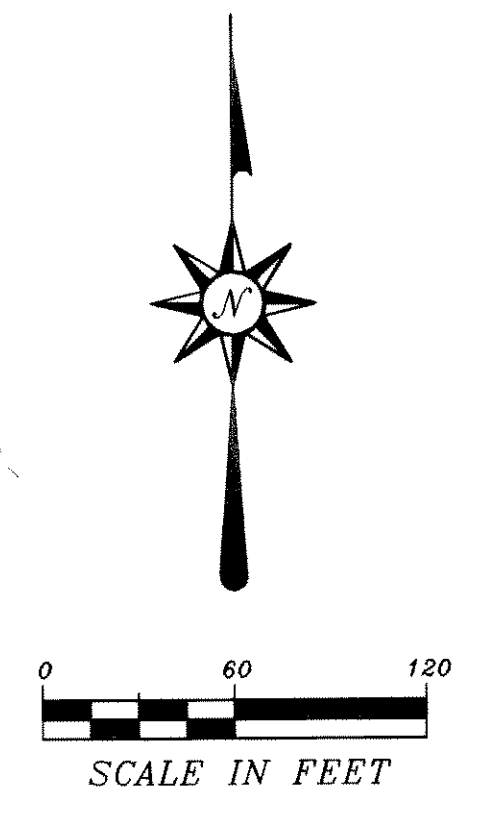
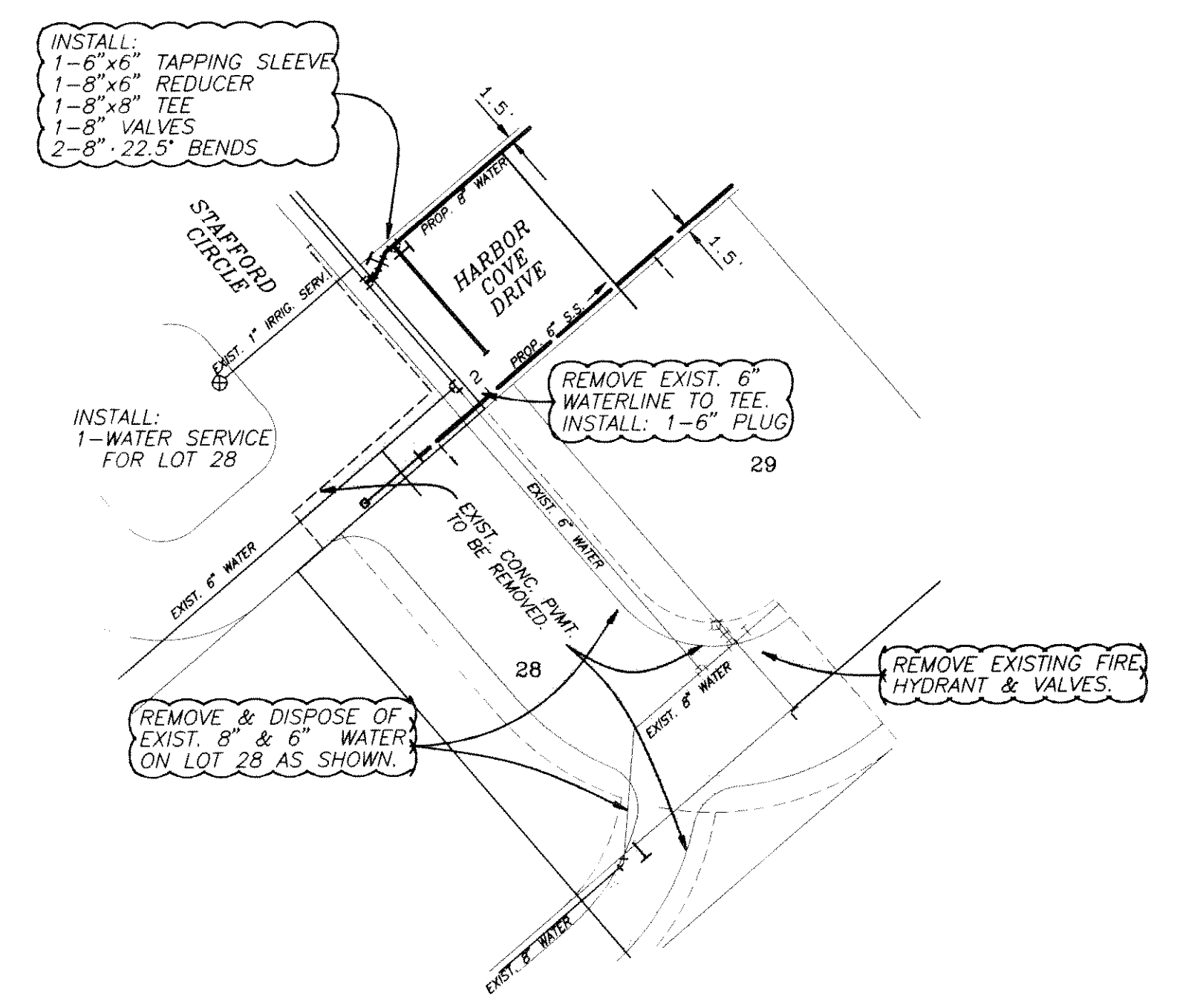
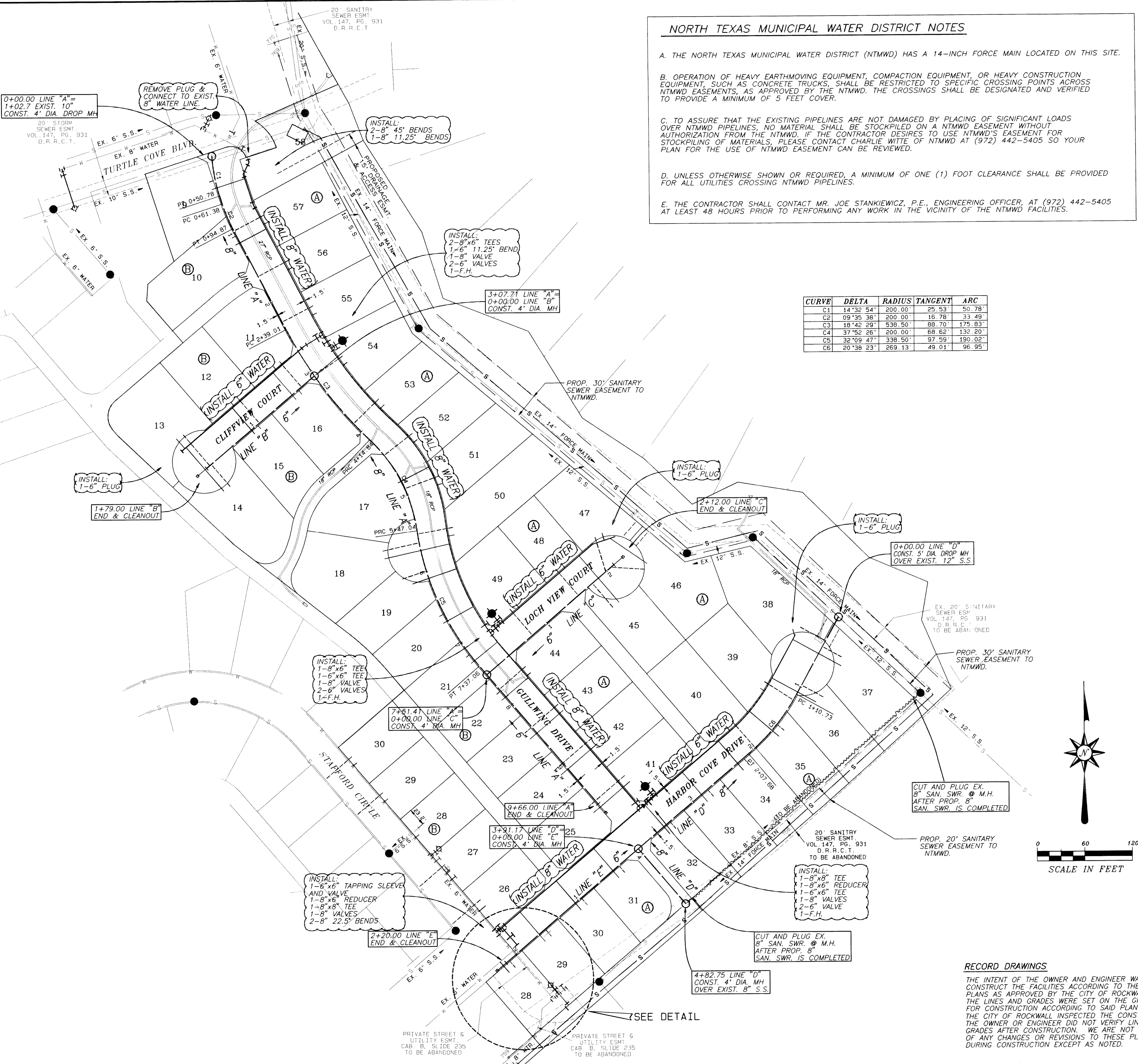
NORTH TEXAS MUNICIPAL WATER DISTRICT NOTES

- A. THE NORTH TEXAS MUNICIPAL WATER DISTRICT (NTMWD) HAS A 14-INCH FORCE MAIN LOCATED ON THIS SITE.
- B. OPERATION OF HEAVY EARTHMOVING EQUIPMENT, COMPACTION EQUIPMENT, OR HEAVY CONSTRUCTION EQUIPMENT, SUCH AS CONCRETE TRUCKS, SHALL BE RESTRICTED TO SPECIFIC CROSSING POINTS ACROSS NTMWD EASEMENTS, AS APPROVED BY THE NTMWD. THE CROSSINGS SHALL BE DESIGNATED AND VERIFIED TO PROVIDE A MINIMUM OF 5 FEET COVER.
- C. TO ASSURE THAT THE EXISTING PIPELINES ARE NOT DAMAGED BY PLACING OF SIGNIFICANT LOADS OVER NTMWD PIPELINES, NO MATERIAL SHALL BE STOCKPILED ON A NTMWD EASEMENT WITHOUT AUTHORIZATION FROM THE NTMWD. IF THE CONTRACTOR DESIRES TO USE NTMWD'S EASEMENT FOR STOCKPIILING OF MATERIALS, PLEASE CONTACT CHARLIE WITTE OF NTMWD AT (972) 442-5405 SO YOUR PLAN FOR THE USE OF NTMWD EASEMENT CAN BE REVIEWED.
- D. UNLESS OTHERWISE SHOWN OR REQUIRED, A MINIMUM OF ONE (1) FOOT CLEARANCE SHALL BE PROVIDED FOR ALL UTILITIES CROSSING NTMWD PIPELINES.
- E. THE CONTRACTOR SHALL CONTACT MR. JOE STANKIEWICZ, P.E., ENGINEERING OFFICER, AT (972) 442-5405 AT LEAST 48 HOURS PRIOR TO PERFORMING ANY WORK IN THE VICINITY OF THE NTMWD FACILITIES.

CURVE	DELTA	RADIUS	TANGENT	ARC
C1	14°32' 54"	200.00'	25.53'	50.78'
C2	09°35' 38"	200.00'	16.78'	33.49'
C3	18°42' 29"	338.50'	68.70'	175.93'
C4	37°52' 26"	200.00'	68.62'	132.20'
C5	32°09' 47"	338.50'	97.59'	190.02'
C6	20°38' 23"	269.13'	49.01'	96.95'

GENERAL NOTES

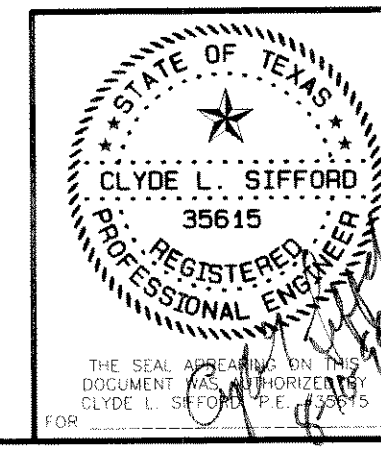
- 1. UNLESS OTHERWISE NOTED, ALL MATERIAL AND CONSTRUCTION SHALL CONFORM TO THE CONSTRUCTION SPECIFICATIONS OF THE CITY OF ROCKWALL WITH AMENDMENTS, LATEST EDITION. REFER TO THE CITY OF ROCKWALL STANDARD CONSTRUCTION DETAILS (NOVEMBER, 1990) FOR ADDITIONAL REQUIREMENTS FOR WATER AND WASTE WATER CONSTRUCTION.
- 2. ALL WATER LINES SHALL BE PVC CLASS 150 AND INSTALLED WITH A MINIMUM OF THREE FEET OF COVER.
- 3. NEW SINGLE SERVICE WATER CONNECTIONS SHALL BE LOCATED AT THE CENTER OF THE LOT, BE ONE (1) INCH POLYETHYLENE AND INSTALLED IN ACCORDANCE WITH ROCKWALL STANDARD CONSTRUCTION DETAILS.
- 4. ALL FIRE HYDRANTS SHALL BE PLACED SEVEN (7) FOOT BEHIND THE CURB IN ACCORDANCE WITH ROCKWALL STANDARD CONSTRUCTION DETAILS. FIRE HYDRANTS SHALL BE EITHER MULLER OR AMERICAN DARLING.
- 5. NEW SEWER LATERALS WILL BE CONSTRUCTED 10' DOWNSTREAM OF THE WATER SERVICE. EACH LATERAL WILL BE FOUR (4) INCH IN DIAMETER. SANITARY SEWER PIPE WILL BE SDR-35.
- 6. ALL SANITARY SEWER MANHOLES WILL BE CAST-IN-PLACE TYPE.
- 7. ALL WATER LINES WILL BE STERILIZED AND HYDROSTATIC TESTED.
- 8. ALL SEWER LINES WILL BE TESTED FOR INFILTRATION.
- 9. BORING WILL BE REQUIRED FOR SEWER SERVICES FOR LOTS 26, 27, 29 & 30, BLOCK "B". SEWER SERVICE FOR LOT 28, BLOCK "B" WILL UTILIZE THE EXISTING 6" STUBOUT.
- 10. TAP THE EXISTING 6" WATER LINE IN STAFFORD CIRCLE TO PROVIDE WATER SERVICES TO LOT 28 BLOCK "A", AND LOTS 26-30 BLOCK "B".
- 11. EXISTING 8" SANITARY SEWER LINE ON LOTS 32-37, BLOCK "A" WILL BE ABANDONED IN PLACE. DO NOT DISTURB EXISTING 14" FORCE MAIN IN THE AREA.
- 12. PROPOSED WATER SERVICES AND SANITARY SEWER LATERALS ON LOTS 28-36, 41 & 42 BLOCK "A" AND LOTS 23-26 BLOCK "B" ARE TO BE EXTENDED TO A POINT 5 (FIVE) FEET PAST THE FRONT LOT LINE TO CLEAR PROPOSED RETAINING WALLS.



- BENCHMARKS:**
- 1. SQUARE CUT ON NORTHEAST CURB ± 150' NORTHWEST OF RAILROAD ON TURTLE COVE BOULEVARD. ELEV. 469.36
 - 2. SQUARE CUT ON CENTERLINE OF INLET WESTERLY FROM CLUBHOUSE ENTRANCE (#700 TURTLE COVE BLVD). ELEV. 447.21

WATER & SANITARY SEWER PLAN
TURTLE COVE ADDITION, PHASE 2
CITY OF ROCKWALL, TEXAS

PBSJ POST, BUCKLEY, SCHUH & JERNIGAN, INC.
5999 SUMMERSIDE DRIVE ~ SUITE 202
DALLAS, TEXAS 75252
PH. (972) 380-2806 FAX (972) 380-2809



DESIGN	DRAWN	DATE	SCALE	FILE	SHEET NO.
PBSJ	PBSJ		AS SHOWN	95115.01	12

RECORD DRAWINGS
THE INTENT OF THE OWNER AND ENGINEER WAS TO CONSTRUCT THE FACILITIES ACCORDING TO THESE PLANS AS APPROVED BY THE CITY OF ROCKWALL. THE LINES AND GRADES WERE SET ON THE GROUND FOR CONSTRUCTION ACCORDING TO SAID PLANS. THE CITY OF ROCKWALL INSPECTED THE CONSTRUCTION. THE OWNER OR ENGINEER DID NOT VERIFY LINES OR GRADES AFTER CONSTRUCTION. WE ARE NOT AWARE OF ANY CHANGES OR REVISIONS TO THESE PLANS DURING CONSTRUCTION EXCEPT AS NOTED.

PRIVATE STREET 6 UTILITY ESMT. CAB. B. SLIDE 235 TO BE ABANDONED