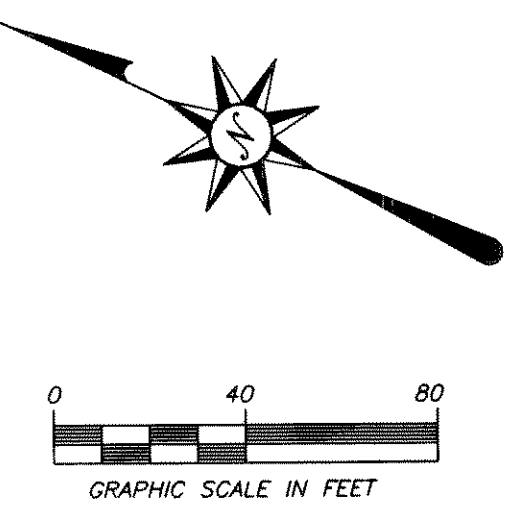


NORTH TEXAS MUNICIPAL WATER DISTRICT NOTES

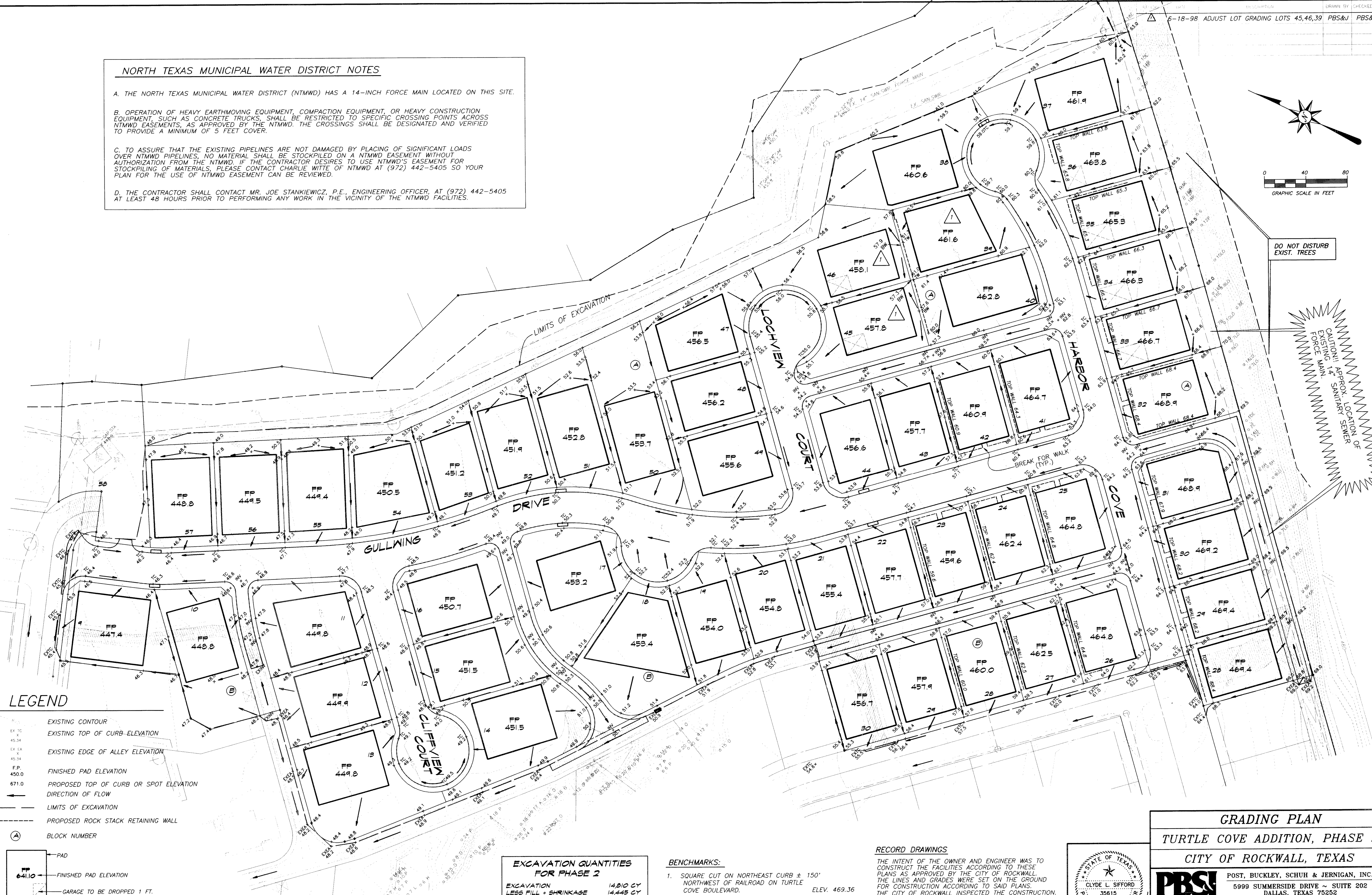
- A. THE NORTH TEXAS MUNICIPAL WATER DISTRICT (NTMWD) HAS A 14-INCH FORCE MAIN LOCATED ON THIS SITE.
- B. OPERATION OF HEAVY EARTHMOVING EQUIPMENT, COMPACTION EQUIPMENT, OR HEAVY CONSTRUCTION EQUIPMENT, SUCH AS CONCRETE TRUCKS, SHALL BE RESTRICTED TO SPECIFIC CROSSING POINTS ACROSS NTMWD EASEMENTS, AS APPROVED BY THE NTMWD. THE CROSSINGS SHALL BE DESIGNATED AND VERIFIED TO PROVIDE A MINIMUM OF 5 FEET COVER.
- C. TO ASSURE THAT THE EXISTING PIPELINES ARE NOT DAMAGED BY PLACING OF SIGNIFICANT LOADS OVER NTMWD PIPELINES, NO MATERIAL SHALL BE STOCKPILED ON A NTMWD EASEMENT WITHOUT AUTHORIZATION FROM THE NTMWD. IF THE CONTRACTOR DESIRES TO USE NTMWD'S EASEMENT FOR STOCKPIILING OF MATERIALS, PLEASE CONTACT CHARLIE WITTE OF NTMWD AT (972) 442-5405 SO YOUR PLAN FOR THE USE OF NTMWD EASEMENT CAN BE REVIEWED.
- D. THE CONTRACTOR SHALL CONTACT MR. JOE STANKIEWICZ, P.E., ENGINEERING OFFICER, AT (972) 442-5405 AT LEAST 48 HOURS PRIOR TO PERFORMING ANY WORK IN THE VICINITY OF THE NTMWD FACILITIES.

POST, BUCKLEY, SCHUH & JERNIGAN, INC. * DALLAS, TEXAS



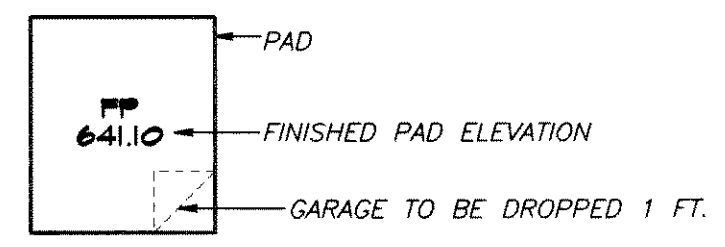
DO NOT DISTURB EXIST. TREES

CAUTION! APPROX. LOCATION OF EXISTING 14" SANITARY FORCE MAIN. FORCE MAIN LOCATION OF SANITARY SEWER



LEGEND

- EXISTING CONTOUR
- EXISTING TOP OF CURB ELEVATION
- EXISTING EDGE OF ALLEY ELEVATION
- FINISHED PAD ELEVATION
- PROPOSED TOP OF CURB OR SPOT ELEVATION
- DIRECTION OF FLOW
- LIMITS OF EXCAVATION
- PROPOSED ROCK STACK RETAINING WALL
- BLOCK NUMBER



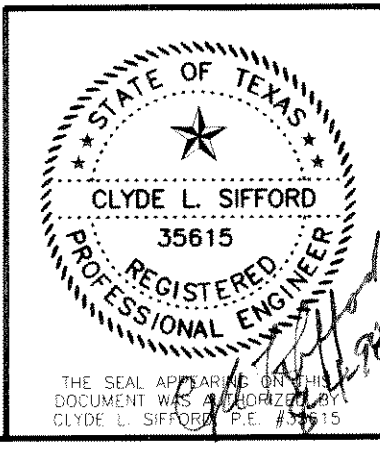
EXCAVATION QUANTITIES FOR PHASE 2

EXCAVATION	14,010 CY
LESS FILL + SHRINKAGE	14,445 CY
SUB TOTAL	365 CY
PLUS TRENCH SPOILS	± 1,800 CY
TOTAL SURPLUS	± 2,165 CY

- BENCHMARKS:**
- SQUARE CUT ON NORTHEAST CURB ± 150' NORTHWEST OF RAILROAD ON TURTLE COVE BOULEVARD. ELEV. 469.36
 - SQUARE CUT ON CENTERLINE OF INLET WESTERLY FROM CLUBHOUSE ENTRANCE (#700 TURTLE COVE BLVD). ELEV. 447.21

RECORD DRAWINGS

THE INTENT OF THE OWNER AND ENGINEER WAS TO CONSTRUCT THE FACILITIES ACCORDING TO THESE PLANS AS APPROVED BY THE CITY OF ROCKWALL. THE LINES AND GRADES WERE SET ON THE GROUND FOR CONSTRUCTION ACCORDING TO SAID PLANS. THE CITY OF ROCKWALL INSPECTED THE CONSTRUCTION. THE OWNER OR ENGINEER DID NOT VERIFY LINES OR GRADES AFTER CONSTRUCTION. WE ARE NOT AWARE OF ANY CHANGES OR REVISIONS TO THESE PLANS DURING CONSTRUCTION.



GRADING PLAN
TURTLE COVE ADDITION, PHASE 2
CITY OF ROCKWALL, TEXAS

PBS&J POST, BUCKLEY, SCHUH & JERNIGAN, INC.
 5999 SUMMERSIDE DRIVE - SUITE 202
 DALLAS, TEXAS 75252
 PH. (972) 380-2805 FAX (972) 380-2809

DESIGN	DRAWN	DATE	SCALE	FILE	SHEET NO.
PBSJ	PBSJ		AS SHOWN	95115.01	8