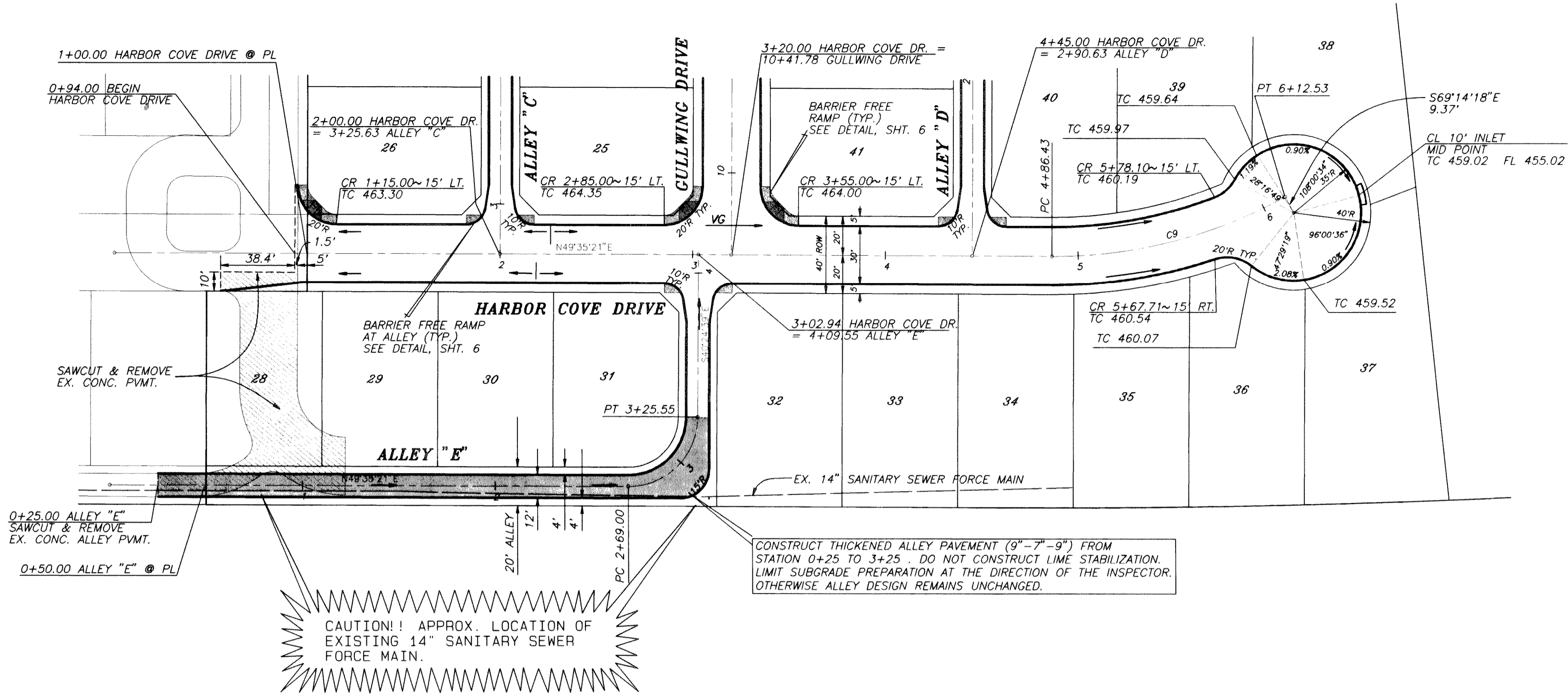


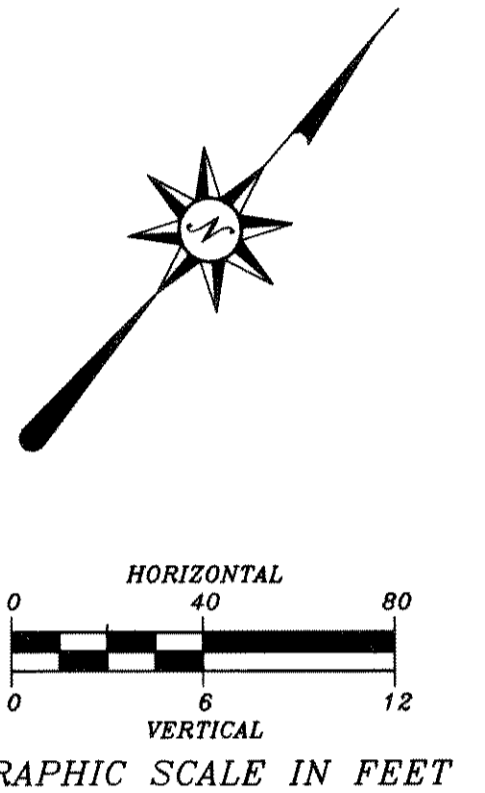
CURVE NO.	DELTA	RADIUS	TANGENT	ARC
C9	28°49'39"	250.63'	64.41'	126.10'

REVISION	DATE	DESCRIPTION	DRAWN BY	CHECKED BY



**NORTH TEXAS MUNICIPAL WATER DISTRICT NOTES**

- A. THE NORTH TEXAS MUNICIPAL WATER DISTRICT (NTMWD) HAS A 14-INCH FORCE MAIN LOCATED ON THIS SITE.
- B. OPERATION OF HEAVY EARTHMOVING EQUIPMENT, COMPACTION EQUIPMENT, OR HEAVY CONSTRUCTION EQUIPMENT, SUCH AS CONCRETE TRUCKS, SHALL BE RESTRICTED TO SPECIFIC CROSSING POINTS ACROSS NTMWD EASEMENTS, AS APPROVED BY THE NTMWD. THE CROSSINGS SHALL BE DESIGNATED AND VERIFIED TO PROVIDE A MINIMUM OF 5 FEET COVER.
- C. TO ASSURE THAT THE EXISTING PIPELINES ARE NOT DAMAGED BY PLACING OF SIGNIFICANT LOADS OVER NTMWD PIPELINES, NO MATERIAL SHALL BE STOCKPILED ON A NTMWD EASEMENT WITHOUT AUTHORIZATION FROM THE NTMWD. IF THE CONTRACTOR DESIRES TO USE NTMWD'S EASEMENT FOR STOCKPILING OF MATERIALS, PLEASE CONTACT CHARLIE WITTE OF NTMWD AT (972) 442-5405 SO YOUR PLAN FOR THE USE OF NTMWD EASEMENT CAN BE REVIEWED.
- D. IN AREAS WHERE THE COVER BETWEEN THE TOP OF THE NTMWD PIPELINE AND THE BOTTOM OF THE SUBGRADE IS THREE (3) FEET OR LESS, IT IS REQUESTED THAT THE SUBGRADE PREPARATION BE DELETED AND A THICKENED PAVEMENT SECTION BE USED TO LIMIT CONSTRUCTION ACTIVITIES OVER THE PIPELINE.
- E. THE CONTRACTOR SHALL CONTACT MR. JOE STANKIEWICZ, P.E., ENGINEERING OFFICER, AT (972) 442-5405 AT LEAST 48 HOURS PRIOR TO PERFORMING ANY WORK IN THE VICINITY OF THE NTMWD FACILITIES.

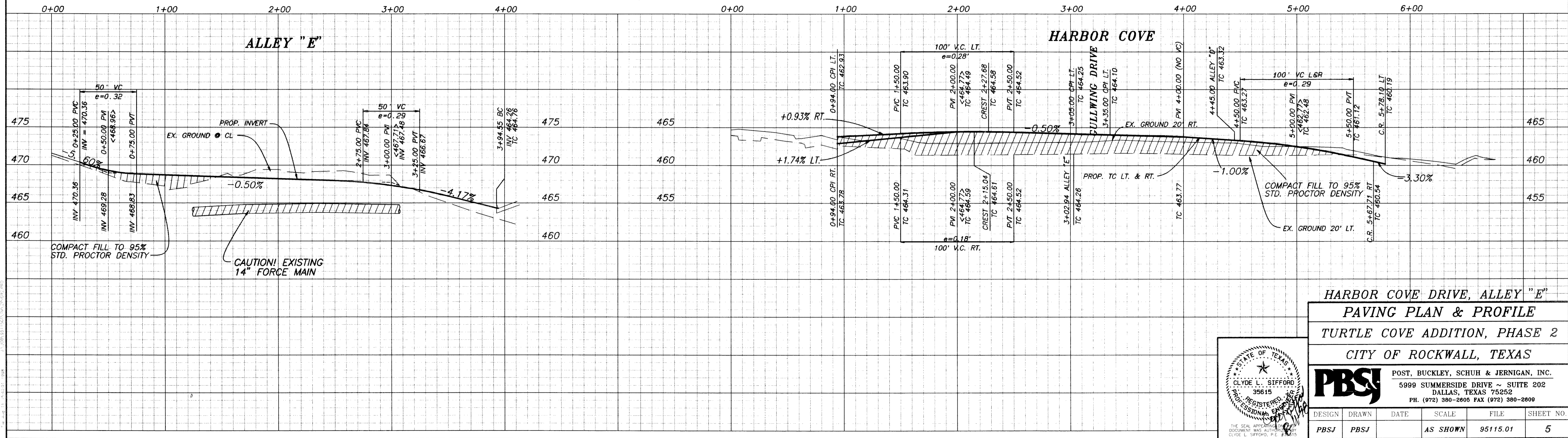


**RECORD DRAWINGS**

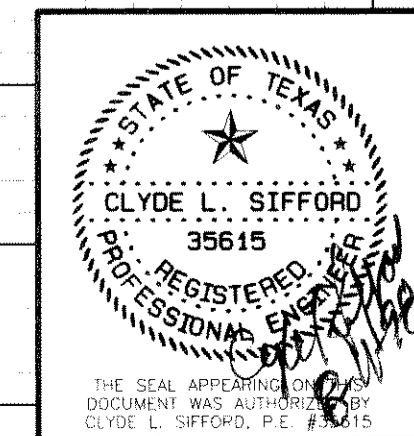
THE INTENT OF THE OWNER AND ENGINEER WAS TO CONSTRUCT THE FACILITIES ACCORDING TO THESE PLANS AS APPROVED BY THE CITY OF ROCKWALL. THE LINES AND GRADES WERE SET ON THE GROUND FOR CONSTRUCTION ACCORDING TO SAID PLANS. THE CITY OF ROCKWALL INSPECTED THE CONSTRUCTION. THE OWNER OR ENGINEER DID NOT VERIFY LINES OR GRADES AFTER CONSTRUCTION. WE ARE NOT AWARE OF ANY CHANGES OR REVISIONS TO THESE PLANS DURING CONSTRUCTION EXCEPT AS NOTED.

**BENCHMARKS:**

- 1. SQUARE CUT ON NORTHEAST CURB ± 150' NORTHWEST OF RAILROAD ON TURTLE COVE BOULEVARD. ELEV. 469.36
- 2. SQUARE CUT ON CENTERLINE OF INLET WESTERLY FROM CLUBHOUSE ENTRANCE (#700 TURTLE COVE BLVD). ELEV. 447.21



**HARBOR COVE DRIVE, ALLEY "E"  
PAVING PLAN & PROFILE  
TURTLE COVE ADDITION, PHASE 2  
CITY OF ROCKWALL, TEXAS**



DESIGN	DRAWN	DATE	SCALE	FILE	SHEET NO.
PBSJ	PBSJ		AS SHOWN	95115.01	5

POST, BUCKLEY, SCHUH & JERNIGAN, INC.  
5999 SUMMERSIDE DRIVE ~ SUITE 202  
DALLAS, TEXAS 75252  
PH. (972) 380-2805 FAX (972) 380-2809