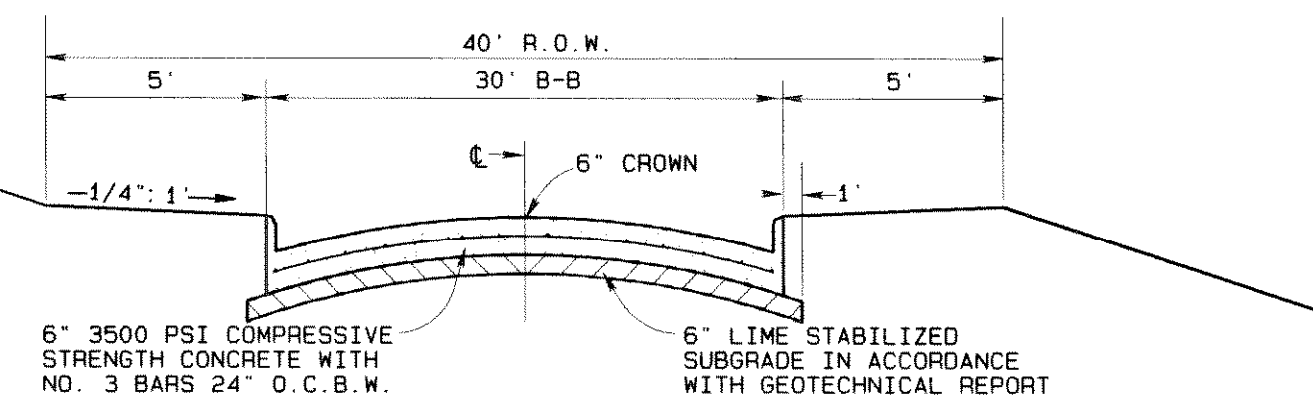
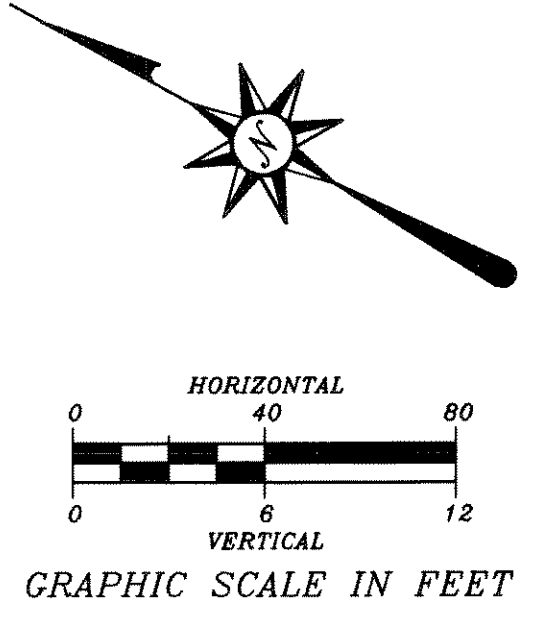
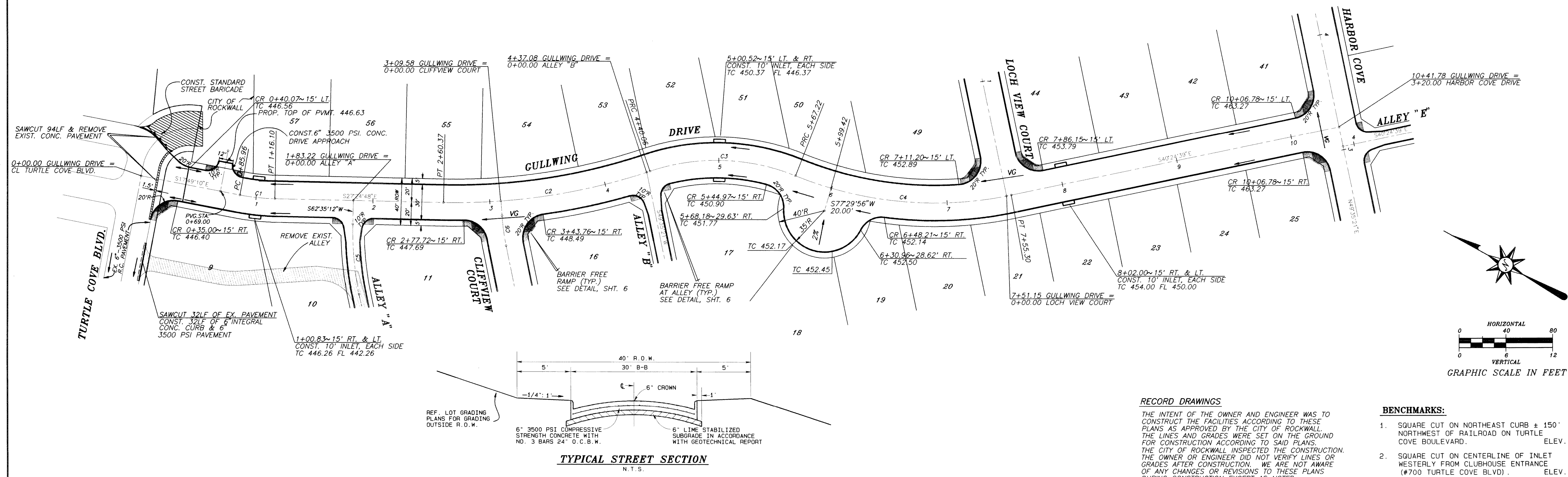


REVISION	DATE	DESCRIPTION	DRAWN BY	CHECKED BY

CURVE NO.	DELTA	RADIUS	TANGENT	ARC
C1	09°35'38"	180.00'	15.11'	30.74'
C2	19°47'57"	520.00'	90.75'	179.89'
C3	40°28'36"	180.00'	66.36'	127.16'
C4	33°40'30"	320.00'	96.84'	188.08'

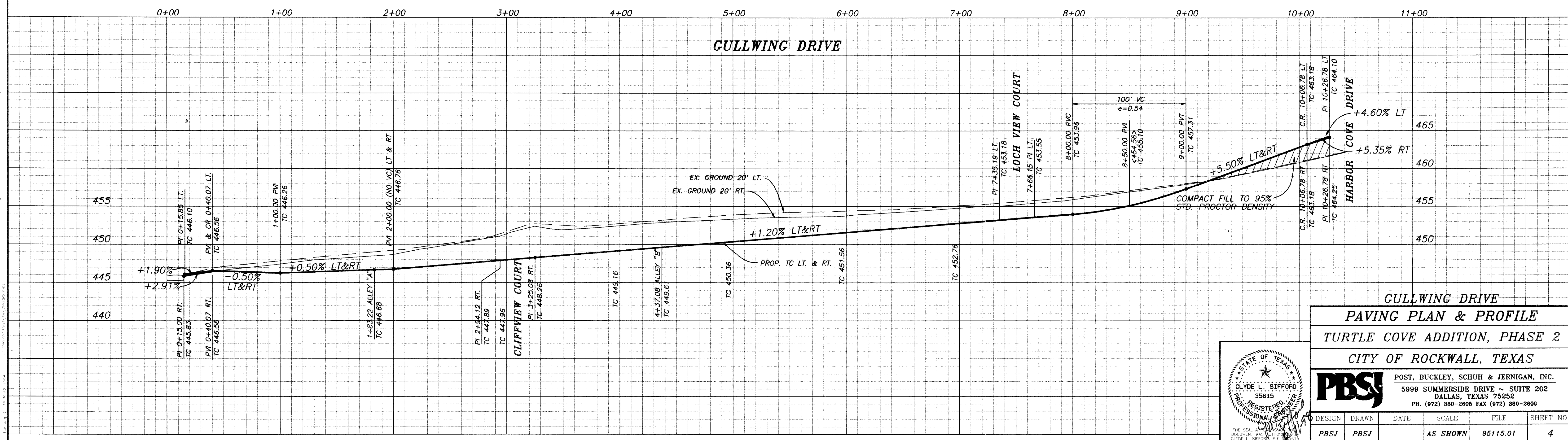


RECORD DRAWINGS

THE INTENT OF THE OWNER AND ENGINEER WAS TO CONSTRUCT THE FACILITIES ACCORDING TO THESE PLANS AS APPROVED BY THE CITY OF ROCKWALL. THE LINES AND GRADES WERE SET ON THE GROUND FOR CONSTRUCTION ACCORDING TO SAID PLANS. THE CITY OF ROCKWALL INSPECTED THE CONSTRUCTION. THE OWNER OR ENGINEER DID NOT VERIFY LINES OR GRADES AFTER CONSTRUCTION. WE ARE NOT AWARE OF ANY CHANGES OR REVISIONS TO THESE PLANS DURING CONSTRUCTION EXCEPT AS NOTED.

BENCHMARKS:

- SQUARE CUT ON NORTHEAST CURB ± 150' NORTHWEST OF RAILROAD ON TURTLE COVE BOULEVARD. ELEV. 469.36
- SQUARE CUT ON CENTERLINE OF INLET WESTERLY FROM CLUBHOUSE ENTRANCE (#700 TURTLE COVE BLVD). ELEV. 447.21



**GULLWING DRIVE
PAVING PLAN & PROFILE
TURTLE COVE ADDITION, PHASE 2
CITY OF ROCKWALL, TEXAS**

PBSJ POST, BUCKLEY, SCHUH & JERNIGAN, INC.
5999 SUMMERSIDE DRIVE ~ SUITE 202
DALLAS, TEXAS 75252
PH. (972) 380-2605 FAX (972) 380-2609

DESIGN	DRAWN	DATE	SCALE	FILE	SHEET NO.
PBSJ	PBSJ		AS SHOWN	95115.01	4

