



teague nall and perkins, inc
823 Walters Creek Blvd., Suite M900
Allen, Texas 75013
214.461.9867 ph 214.461.9864 fx
www.tnpi.com
TBP#: F-230; TBPL#: 10011600, 10011601, 10194381



PROJECT:
TRU by HILTON
2800 SUMMER LEE DRIVE
ROCKWALL, TEXAS 75087
CLIENT:
MHC Rockwall, LLC.
1468 KIMBROUGH ROAD, SUITE 103
GERMANTOWN, TENNESSEE 38188

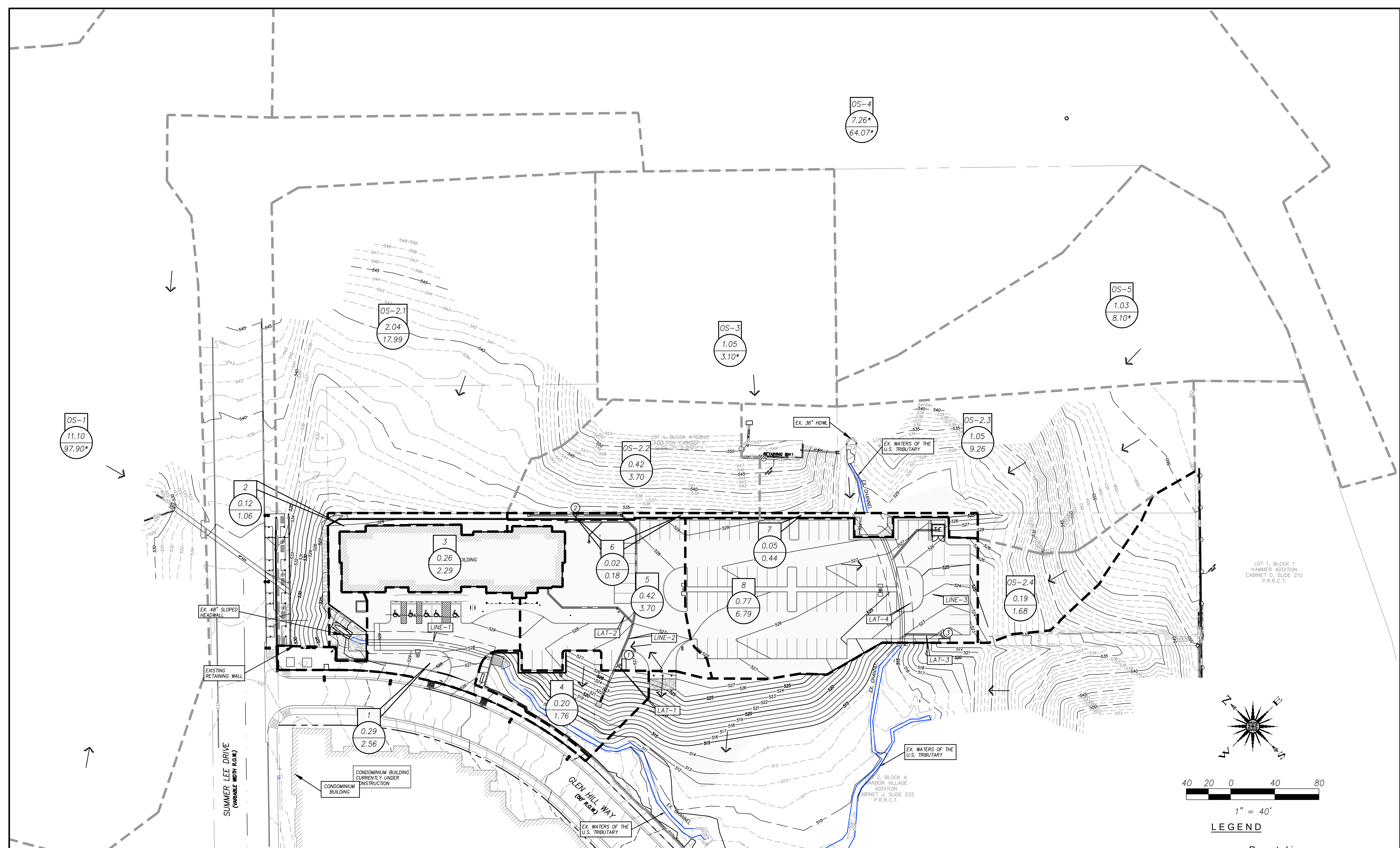
©2018 GARY BRINK & ASSOC.
Any duplication, reproduction, or use by any other party is prohibited unless prior written authorization is received from GARY BRINK & ASSOC.

PROJECT: 201709
DRAWN BY: C.A.S.
DATE: 9/2/2020
SCALE: AS NOTED

CASE NO.

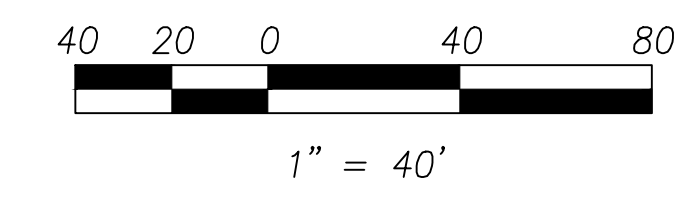
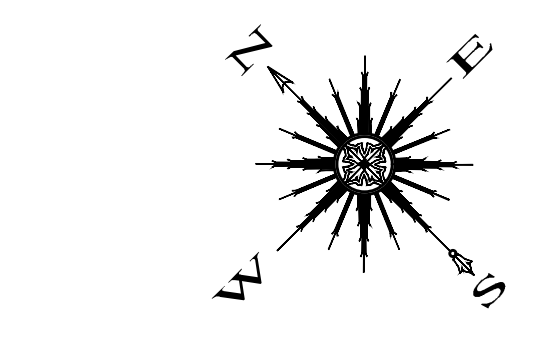
POSTDEVELOPED
DRAINAGE PLAN

C8.0



POST DEVELOPED DRAINAGE AREA CALCULATIONS						
Drainage Area No.	Total Area (Acres)	Runoff Coefficient C	Time of Concentration Tc (Min.)	Rainfall Intensity I ₁₀₀ (in/hr)	Proposed Flow Q ₁₀₀ (cfs)	Remarks
OS-1	11.10	0.90	10	9.80	97.90	FLOWS TO PROP. 48" CULVERT (LINE-1)
OS-2.1	2.04	0.90	10	9.80	17.99	FLOWS TO PROP. 48" CULVERT (LINE-1)
OS-2.2	0.42	0.90	10	9.80	3.70	FLOWS TO INLETS 2
OS-2.3	1.05	0.90	10	9.80	9.26	FLOWS TO 48" CULVERT (LINE-3)
OS-2.4	0.19	0.90	10	9.80	1.68	FLOWS TO INLET 3
OS-3	1.05	0.35	20	8.30	3.1	FLOWS TO EX. DETENTION POND, 48" CULVERT (LINE-3)
OS-4	-	-	-	-	64.07	FLOWS TO 48" CULVERT (LINE-3)
OS-5	1.03	-	-	-	8.10	FLOWS TO 48" CULVERT (LINE-3)
1	0.29	0.90	10	9.80	2.56	FLOWS TO INLET IN GLEN HILL WAY
2	0.12	0.90	10	9.80	1.06	FLOWS TO PROP. 48" CULVERT (LINE-1)
3	0.26	0.90	10	9.80	2.29	FLOWS TO LAT-2, LINE-2, EX. CHANNEL
4	0.20	0.90	10	9.80	1.76	FLOWS TO EX. CHANNEL
5	0.42	0.90	10	9.80	3.70	FLOWS TO INLET 1
6	0.02	0.90	10	9.80	0.18	FLOWS TO INLETS 2
7	0.05	0.90	10	9.80	0.44	FLOWS TO 48" CULVERT (LINE-3)
8	0.77	0.90	10	9.80	6.79	FLOWS TO INLET 3
TOTAL	19.01				224.54	

* NOTE: EXISTING DRAINAGE AREAS AND DRAINAGE INFORMATION IS TAKEN FROM RECORD DRAWINGS PROVIDED BY THE CITY OF ROCKWALL.



LEGEND

- Property Line
- Ex. Contour
- Flow Direction
- Drainage Area No.
- Drainage Area (Ac.)
- Ex. Drain. Runoff - Q (cfs)
- Ex. Waters of the U.S. Tributary
- Existing Drainage Divide
- Existing Offsite Drainage Divide

RECORD DRAWINGS